
Camera/Monitor Installation

Camera/Monitor Installation

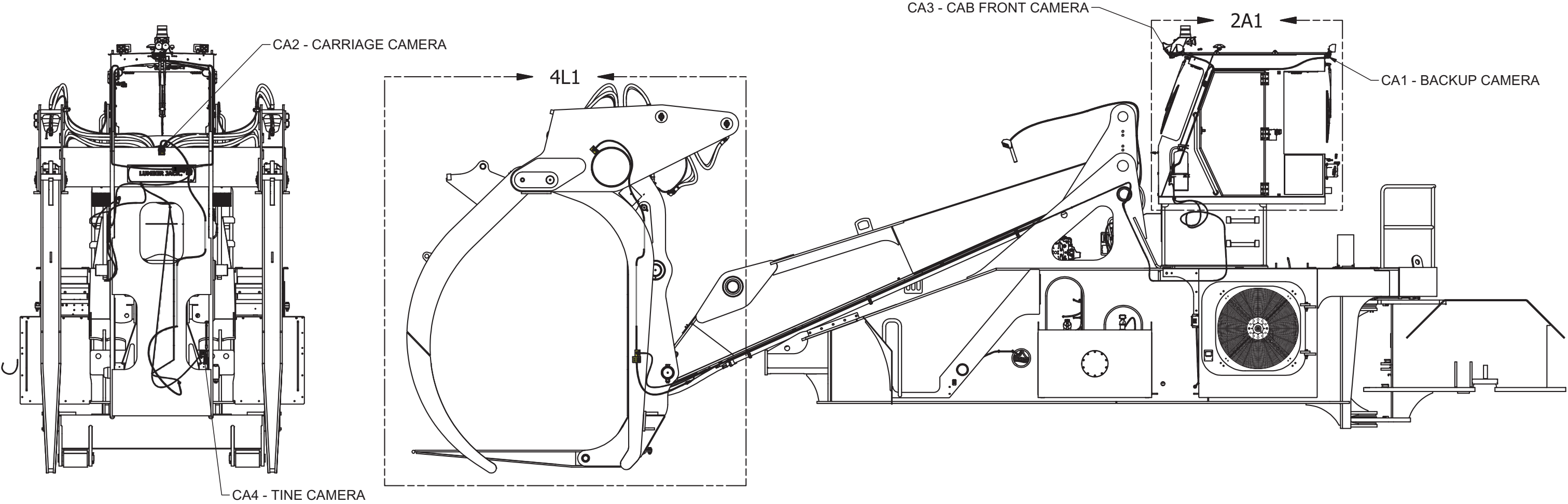
Item	Part No.	Qty	Description	Item	Part No.	Qty	Description
	603632		Camera/Monitor Installation				
1	603657	1	. Camera/Monitor, Cab	2	599859	1	. Camera/Monitor, Boom
1.1	* 603660	1	.. Camera/Monitor	2.1	597475	2	.. Cable, Camera 66 Ft
1.2	591879	1	.. Bracket, Mounting	2.3	249329	1	.. Cable Tie
1.3	256612	0	.. Camera	2.4	597473	1	.. Fitting
1.4	591557	0	.. Cable, Camera	2.6	242601	15	.. Cable Tie
1.5	236806	2	.. Grommet	3	599860	1	. Camera/Monitor, Carriage
1.6	Y09C-M0820	4	.. Capscrew	3.1	256612	2	.. Camera
1.7	597473	2	.. Fitting	3.2	593295	2	.. Mounting Weldment, Camera
1.8	597474	2	.. Cable, Camera 5 ft	3.3	598939	1	.. Cable, Camera 17 Ft
1.9	596491	4	.. Capscrew	3.5	Y09C-M0820	6	.. Capscrew
1.11	302400W	2	.. Locknut	3.7	242601	15	.. Cable Tie (Black)
1.12	296418W	2	.. Hard Washer	3.8	593906	1	.. Bracket, Camera
1.13	R13803021	1	.. Clip, Insulated	3.9	593903	2	.. Nut, Channel
1.15	593346	10	.. Mount	3.10	221767W	3	.. Washer
1.16	242601	15	.. Cable Tie	3.11	302400W	3	.. Locknut
				3.12	R13809364	2	.. Capscrew

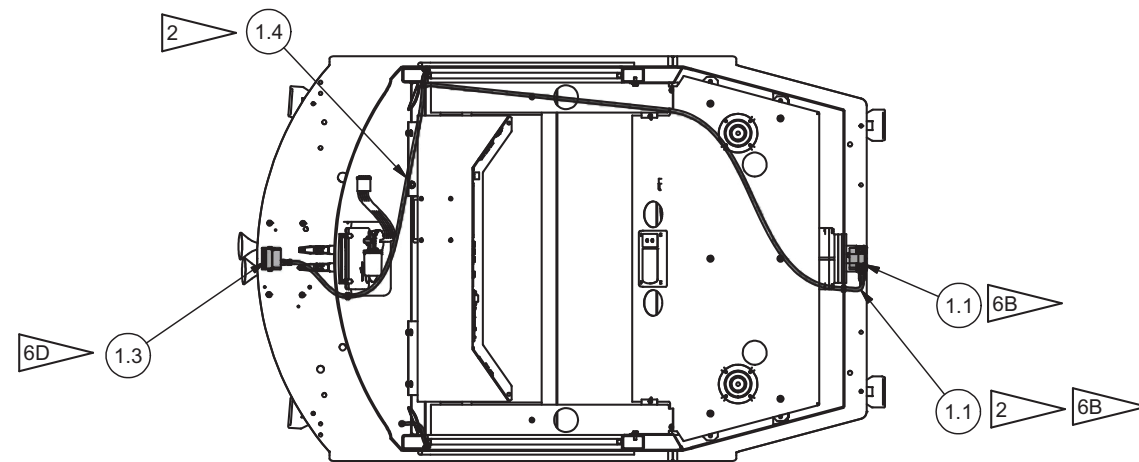
* See Separate Coverage

Note: This parts page may include items not shipped with your machine. Quantities reflect as-delivered condition for your machine. Items with qty 0 were not included on delivery, but may be ordered as an upgrade. Contact your dealer for details.

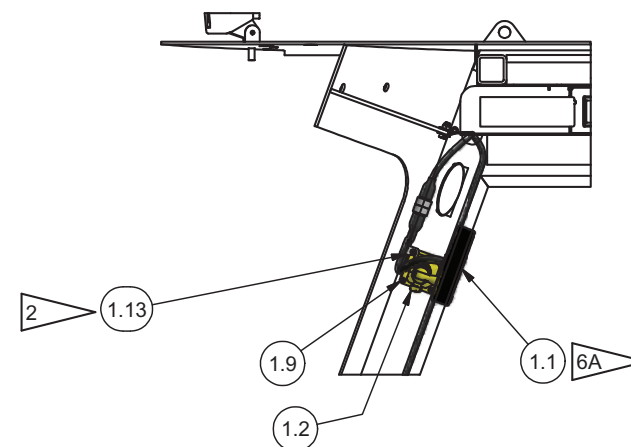
NOTES:

- 1: CAMERA/MONITOR KIT COMES WITH A CAMERA W/ BRACKET, POWERHARNESS, MONITOR, DISPLAY STAND, AND 17' CABLE. THE DISPLAY STAND IS NOT USED. THE MOUNTING HARDWARE FROM THE DISPLAY STAND WILL BE USED TO INSTALL THE 6" DISPLAY STAND.
- 2: LABEL
 - LABEL BOTH ENDS OF CABLES ACCORDING TO THE CAMERA THEY CONNECT. EX: CA2
 - LABEL BOTH ENDS OF EXTENSION CABLES ACCORDING TO THE CAMERA THEY CONNECT. EX: CA2
- 3: SECURE CAMERA CABLES TO HYDRAULIC HOSES OR WIRE HARNESS AS NEEDED. USE ADHESIVE MOUNTS AND CABLE TIES TO SECURE ANY LOOSE CAMERA CABLES.
- 4: POWER HARNESS IS LOCATED UNDER THE DASH AND THE ELECTRICAL CONNECTS STRAIGHT TO THE FUSE PANEL. REFER TO THE MACHINE ELECTRICAL SCHEMATIC FOR ELECTRICAL CONNECTION DETAILS.
- 5: CONFIGURE MONITOR USING SHEET 8.
- 6: INSTALLATION:
 - A: MONITOR
 - MOUNT ON RH A-PILLAR.
 - ROUTE CABLE THROUGH CLAMP ON MOUNT & DOWN RH A-PILLAR.
 - B: REAR CAMERA
 - LABEL: CA1
 - ROUTE REAR CAMERA CABLE FIRST TO FIND SUITABLE LOCATION FOR POWER HARNESS. (THIS CABLE CAME WITH THE CAMERA/MONITOR KIT.)
 - ROUTE CAMERA CABLE UNDER BEAUTY PANEL/ALONG LH AIR DUCT/DOWN LH A-PILLAR.
 - CAMERA MOUNTED ON TOP/REAR OF THE ROOF. (THIS CAMERA CAME WITH THE CAMERA/MONITOR KIT.)
 - CONNECT CAMERA TO CA1 INPUT ON THE POWER HARNESS.
 - C: CARRIAGE CAMERA
 - LABEL: CA2
 - CAMERA MOUNTED ON TOP/FRONT OF CARRIAGE.
 - ROUTE CAMERA CABLE DOWN BACK SIDE OF CARRIAGE TO BULKHEAD CONNECTION ON UNDERSIDE OF BOOM.
 - RUN CARRIAGE CAMERA CABLE EXTENSION ON UNDERSIDE OF BOOM TO BULKHEAD CONNECTION ON UNDERSIDE OF CAB FOLLOWING THE BOOM WIRE HARNESS. LOOP EXCESS UNDER CAB.
 - RUN SECOND CARRIAGE CAMERA CABLE EXTENSION FROM THE BULKHEAD CONNECTION IN THE CAB TO CA2 INPUT ON THE POWER HARNESS.
 - D: CAB FRONT CAMERA
 - LABEL: CA3
 - LOCATE ON BOTTOM/FRONT OF CAB.
 - ROUTE CAMERA CABLE DOWN LH A-PILLAR.
 - CONNECT CAMERA TO CA3 INPUT ON THE POWER HARNESS.
 - E: TINE CAMERA
 - LABEL: CA4
 - LOCATE ON LOWER/LH SIDE OF CARRIAGE.
 - ROUTE TINE CAMERA CABLE ON UNDERSIDE OF BOOM TO BULKHEAD CONNECTION ON UNDERSIDE OF CAB FOLLOWING THE BOOM WIRE HARNESS. LOOP EXCESS UNDER CAB.
 - RUN SECOND TINE CAMERA CABLE EXTENSION FROM THE BULKHEAD CONNECTION IN THE CAB TO CA4 INPUT ON THE POWER HARNESS.

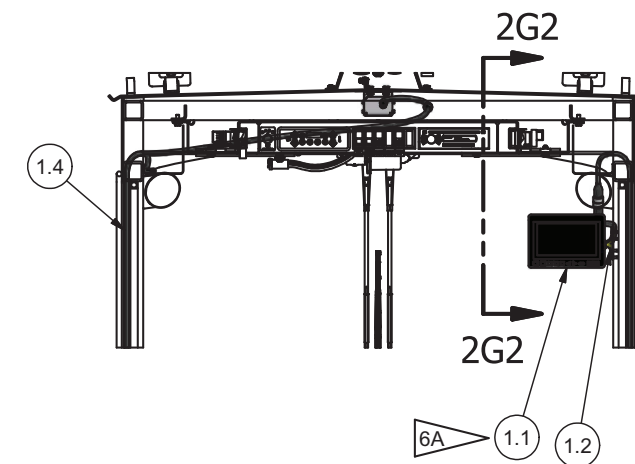




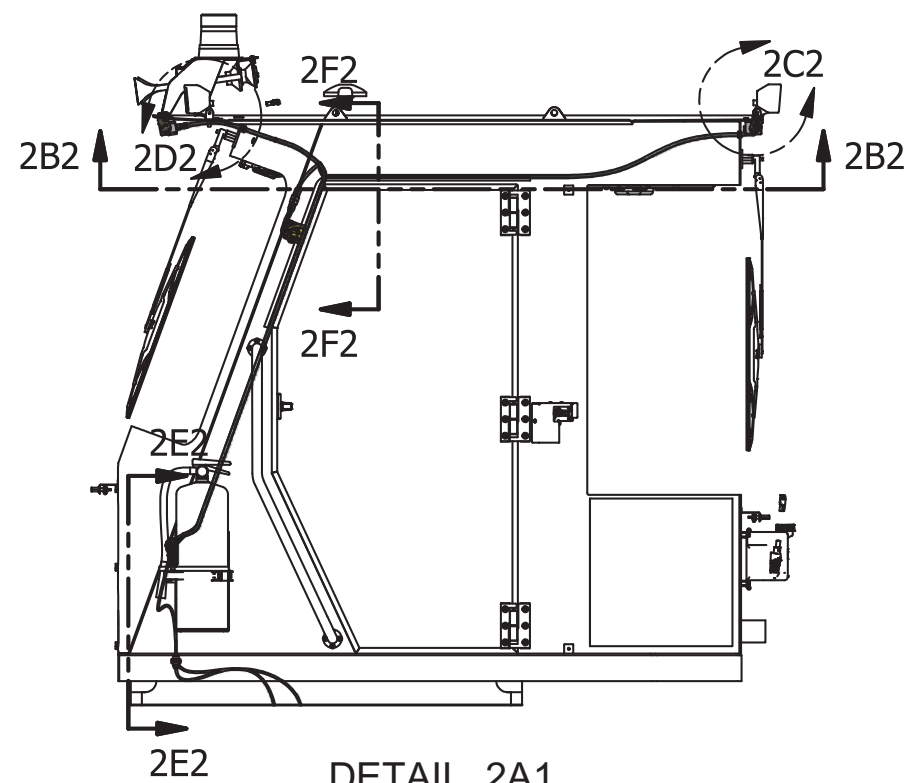
SECTION 2B2-2B2
WIRES ROUTE UNDER BEAUTY PANEL



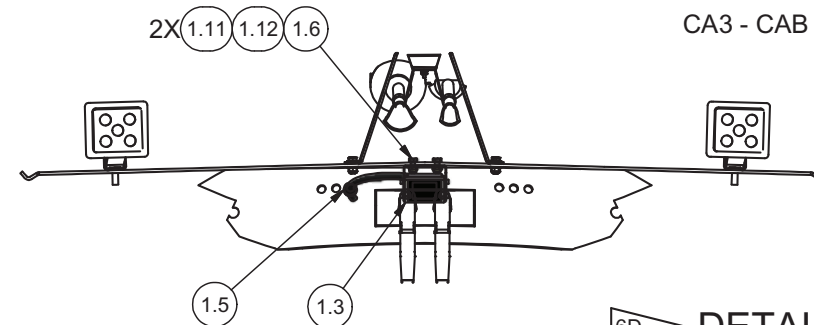
SECTION 2G2-2G2
MONITOR MOUNTING



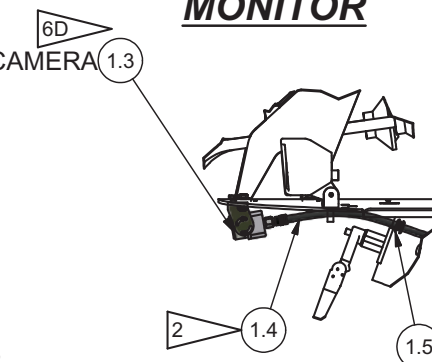
SECTION 2F2-2F2
MONITOR



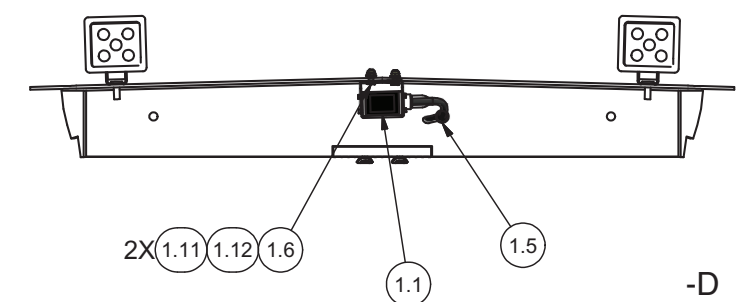
DETAIL 2A1



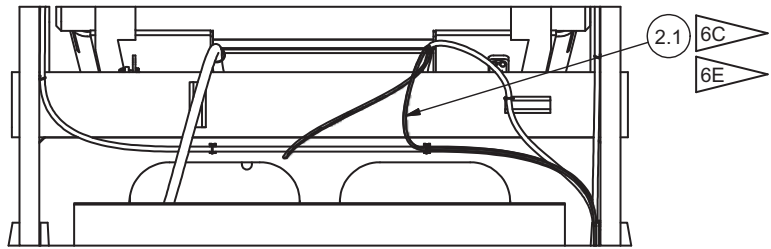
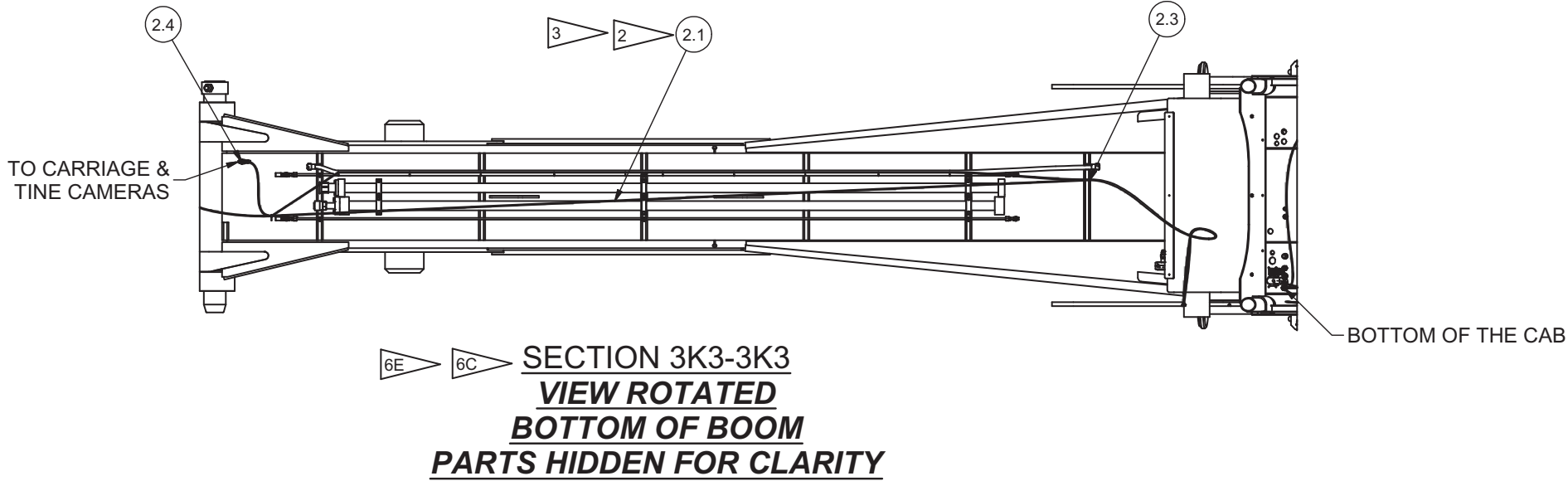
DETAIL 2D2
FRONT CAB CAMERA



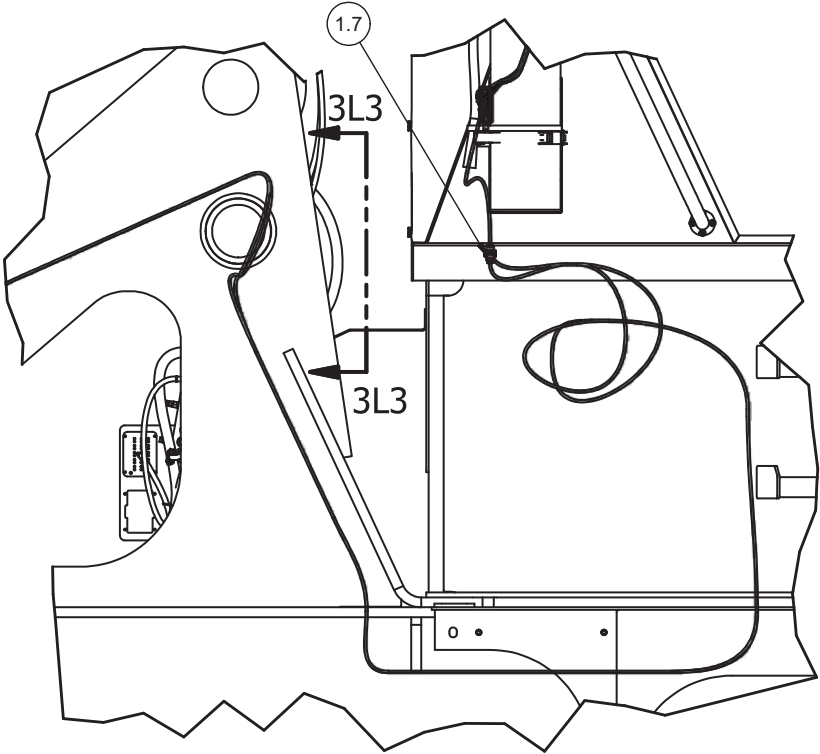
DETAIL 2C2
BACKUP CAMERA



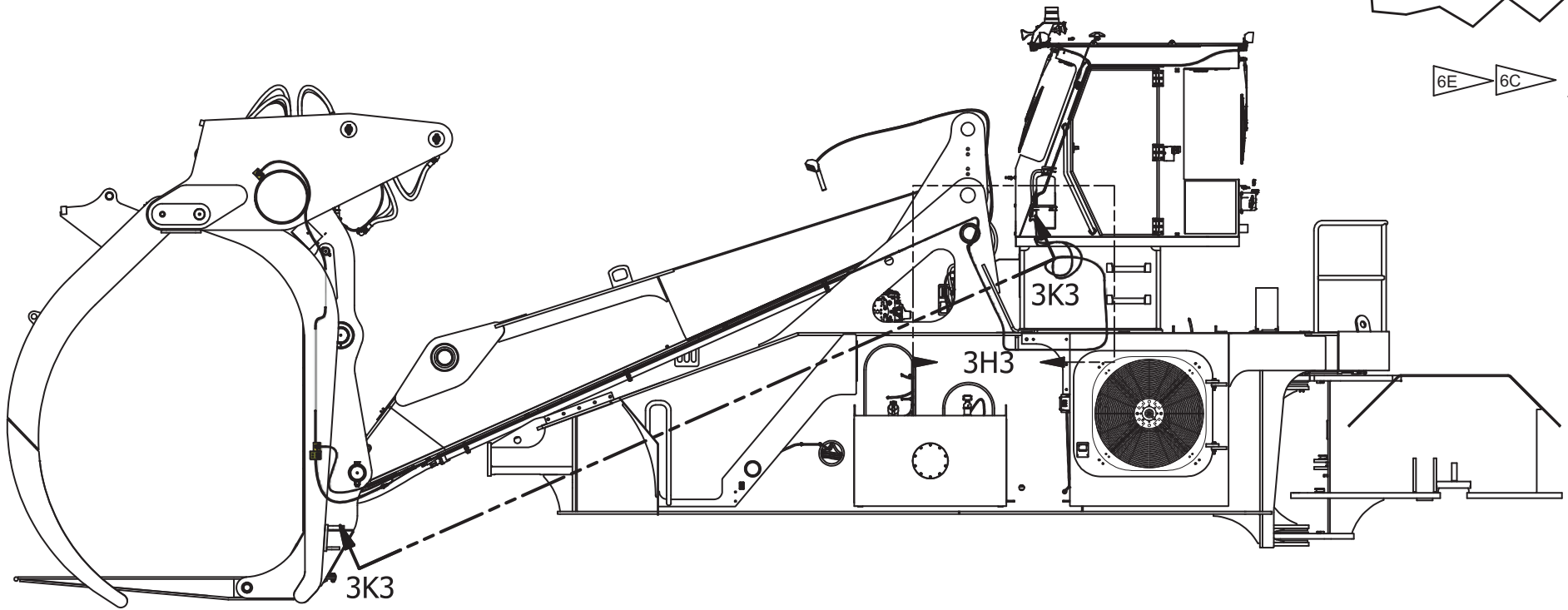
-D

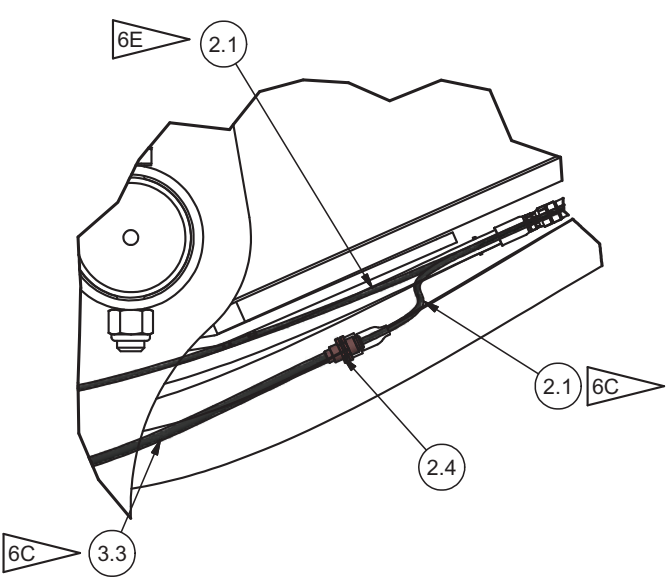
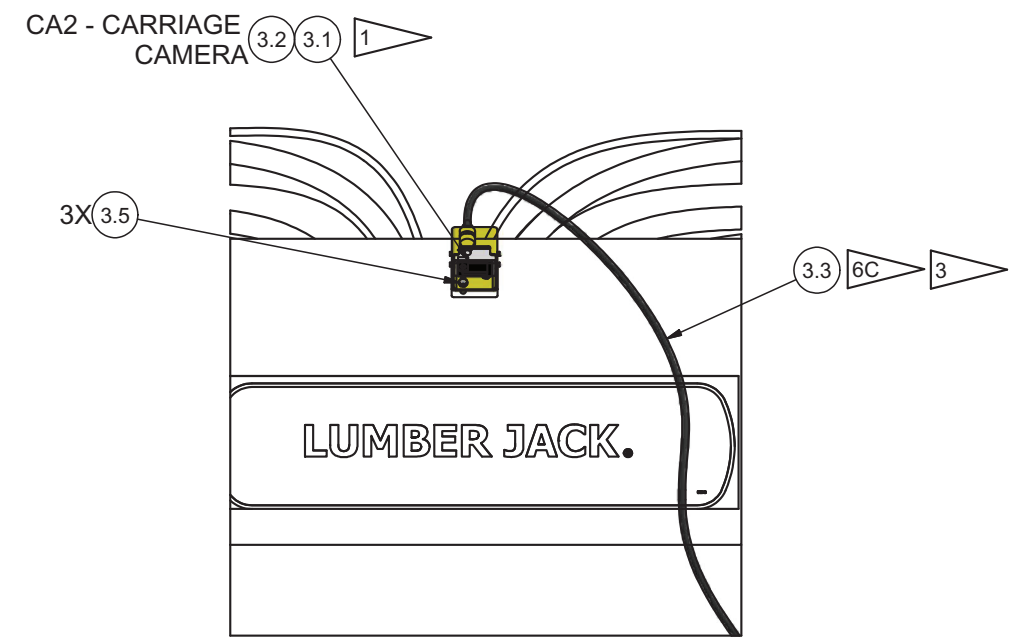


SECTION 3L3-3L3



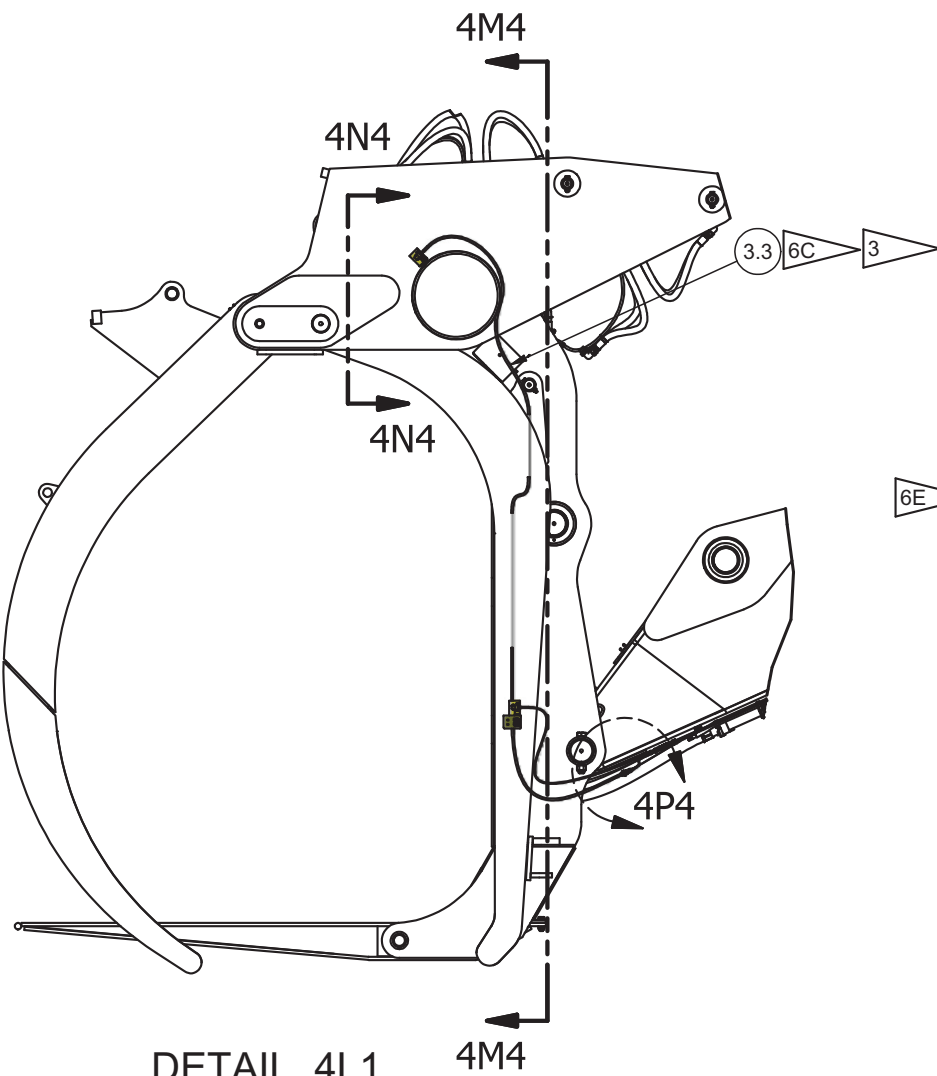
DETAIL 3H3



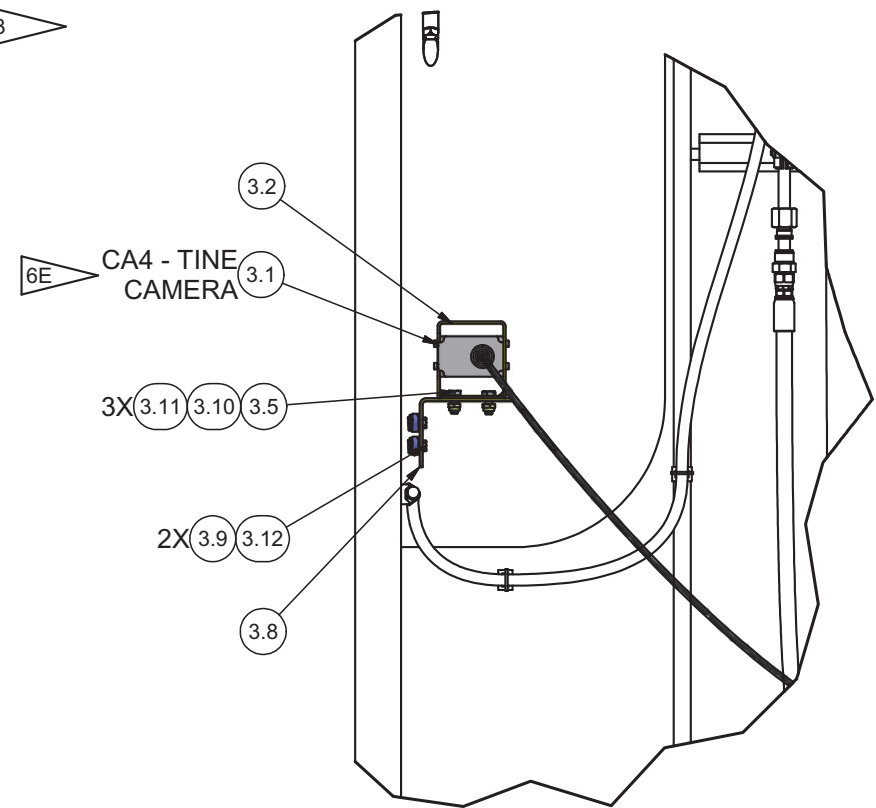


DETAIL 4P4

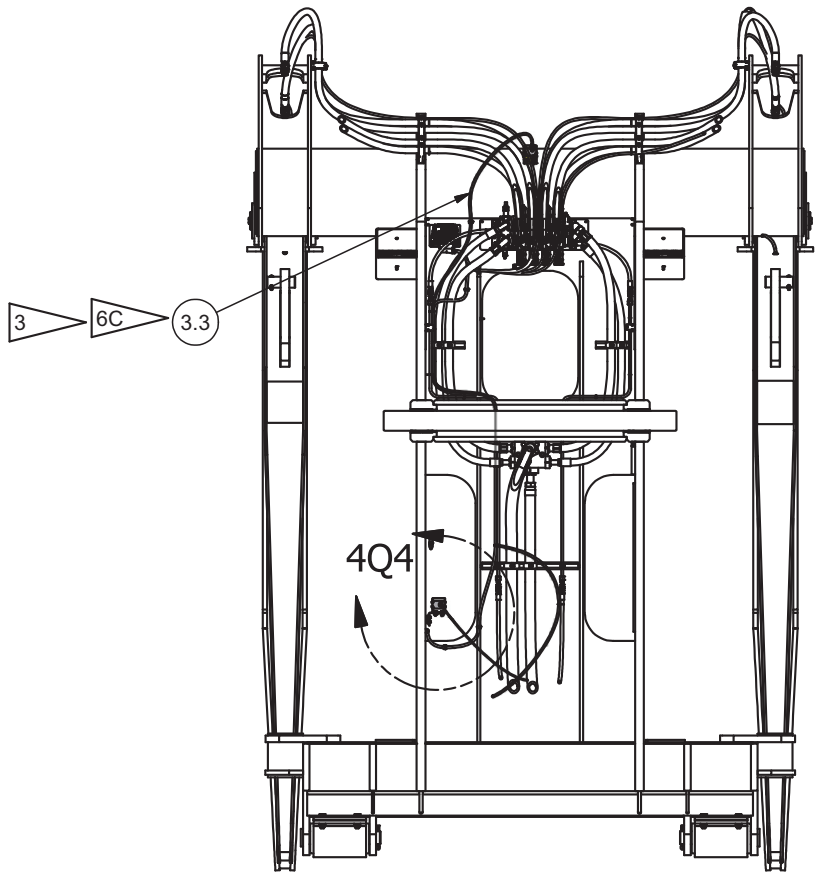
6C SECTION 4N4-4N4
6C **CARRIAGE CAMERA**



DETAIL 4L1



6E DETAIL 4Q4
TINE CAMERA



SECTION 4M4-4M4

CONFIGURE NOTES:
USING THE GUIDE TO THE RIGHT, CONFIGURE THE MONITOR
ONCE POWER IS APPLIED.

SET THE CAM2 AND CAM3 TO MIRROR

SET LOGO TO OFF

SET TRIGGER 3 TO CAM3/CAM2 SPLIT

SET CAM 2 AND CAM 3 NAME TO FRONT

11) POWER CABLE

Connect the RED wire to the (10-32VDC) positive + power terminal which is energized with the ignition key in the accessory position.
Connect the BLACK wire to a metal point on the car or negative battery post.
Connect the GREEN wire to the switched positive +power output terminal of the "R" (reverse)gear.
Connect the WHITE wire to the switched positiver +power output terminal of CA2.
Connect the BLUE wire to the switched positiver +power output terminal of CA3.
Connect the BROWN wire to the switched positiver +power output terminal of CA4.

Cable Color	Description
Red	Positive power (DC 10V ~ 32V)
Black	Ground
Green	R(reverse) gear power(DC 10V ~32 V)
White	Trigger 2 power(DC 10V ~32 V)
Blue	Trigger 3 power(DC 10V ~32 V)
Brown	Trigger 4 power(DC 10V~32 V)

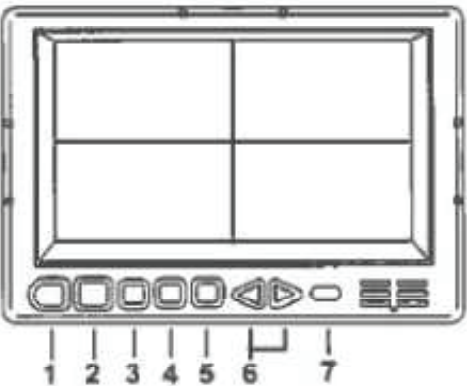
3 . OSD Picture

How to go to OSD Menu Mode

♣ Press the power 1 button to enter the Menu mode.

- 1) press the button 4, 5 to select the Menu page =>
 - 2) Press the button 6 to enter the page =>
 - 3) Press the button 4, 5 to select the function=>
 - 4) Press the button 6 to change the function.
- Press the button 1 to return to the previous page.

MONITOR



[MENU PAGE] 1

FUNCTION	
LANGUAGE	ENGLISH
SYSTEM	NTSC/PAL
DIRECTION	0 / 180 °
DIMMER	1(2,3,4,5,OFF)
AUTO POWER	ON
LOGO SET	▶-----▶
AV OUTPUT	LIVE/QUAD
SHUTTER	ON
RESET	▶

[MENU PAGE] 2

PICTURE	
CONTRAST	15
BRIGHTNESS	15
COLOR	15
TINT	15

[MENU PAGE] 3

NOR/MIR	
CAM1	NORMAL
CAM2	NORMAL
CAM3	NORMAL
CAM4	NORMAL
ALL	NORMAL

[MENU PAGE] 4

UP/DOWN	
CAM1	UP
CAM2	UP
CAM3	UP
CAM4	UP
ALL	UP

[MENU PAGE] 5

TRIGGER	
REAR SCALE	ON
BLINK MARK	ON
TRIG 1	CAM1
TRIG 2	CAM3/CAM2
TRIG 3	2PIP
TRIG 4	3PIP
HAZARD	QUAD

[MENU PAGE] 6

CAMERA NAME	
CAM1	REAR
CAM2	RIGHT
CAM3	LEFT
CAM4	FRONT

[MENU PAGE] 7

CAM MODUS	
QUAD	ON
3PIP	ON
2PIP	ON
3SPLIT	ON
CAM3/2 SPLIT	ON
CAM4/1 SPLIT	ON

[MENU PAGE] 8

SCAN	
AUTO SCAN	ON
SCAN KEY	ONE
CAM1	3
CAM2	3
CAM3	3
CAM4	3

[MENU PAGE] 9

REAR SCALE ADJ	
STOP	REAR

[SETTING PAGE]

LOGO	
LOGO	ON
LOGO TIME	3(2~20)
OSD	ON