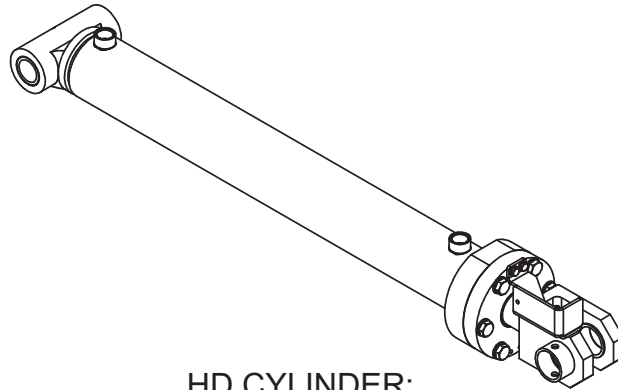

Cylinder Assembly, Holddown

Cylinder Assembly, Holddown

Item	Part No.	Qty	Description	Item	Part No.	Qty	Description
	598157		Cylinder Assembly, Holddown				
1	598171	1	. Stem	13	296430W	6	. Washer
2	598160	1	. Barrel	99	598177	1	. Kit, Packing
3	598173	1	. Gland, Cylinder	99.1	69770.0500	1	.. Seal, Piston
4	219929	1	. Nut	99.2	70384.0500	2	.. Wear Ring, Piston
5	598174	1	. Piston, Cylinder	99.3	233126	1	.. O-Ring
6	598176	1	. Bracket, Proximity Sensor	99.4	70385.0300	2	.. Wear Ring, Rod
7	89331	1	. Switch, Proximity	99.5	222957	1	.. Wiper Ring
8	296420W	2	. Washer	99.6	69768.0300	1	.. Seal, Buffer
9	293628W	2	. Capscrew	99.7	222959	1	.. Seal
10	598175	1	. Spacer Cylinder	99.8	Y076800-226	2	.. Ring, Backup
11	Y435306.50	1	. Snap, Int	99.9	301991W	1	.. O-Ring
12	293713W	6	. Capscrew				

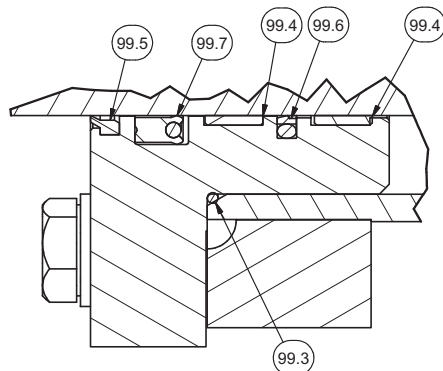
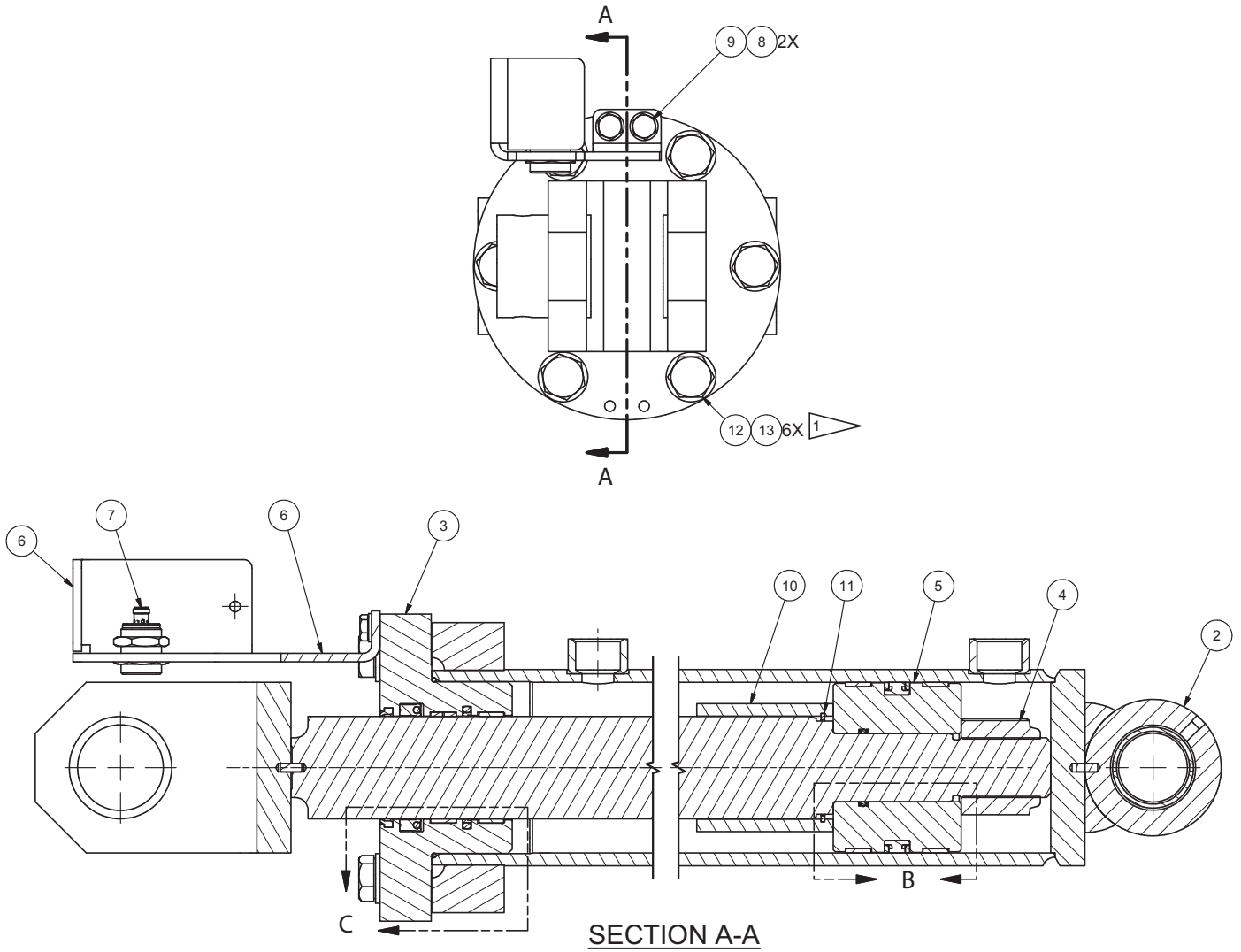


**HD CYLINDER:
SENSOR MOUNTED ON
CYLINDER PORTING SIDE**

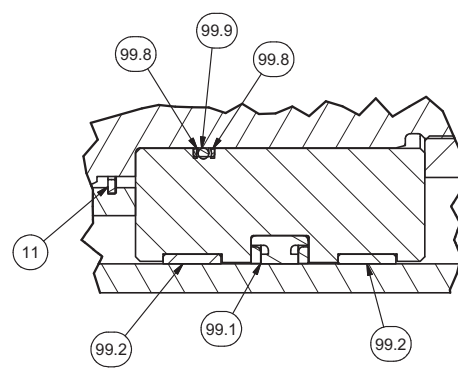
NOTES:

- 1 **TORQUE REQUIREMENT NOTE**
 * TIGHTEN BOLTS TO 495 FT-LBS
 * REMOVE DIRT, LOOSE SCALE, BURRS, AND PAINT FROM THE MATING SURFACES OF BOLTED JOINTS.
 * TORQUE BOLTS IN STAR PATTERN IN TWO STAGES:
 - STAGE 1 50-60% OF FULL TORQUE VALUE
 - STAGE 2 FINAL TORQUE VALUE
 * APPLY COPPER ANTI-SEIZE ASC P/N 244264 TO FASTENERS
- 2 ADJUST PROXIMITY SENSOR SUCH THAT SENSOR ACTIVATES DURING LAST INCH OF TRAVEL
- 3 HOLES, LOCK COLLAR, AND SENSOR ORIENTATION AS SHOWN
- 4 TORQUE TO 1,400 FT-LBS WITH HYDRAULIC OIL AS LUBRICANT

Cylinder Assembly, Holddown



DETAIL C
GLAND PACKING



DETAIL B
PISTON PACKING