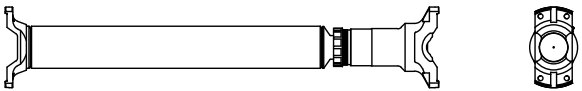
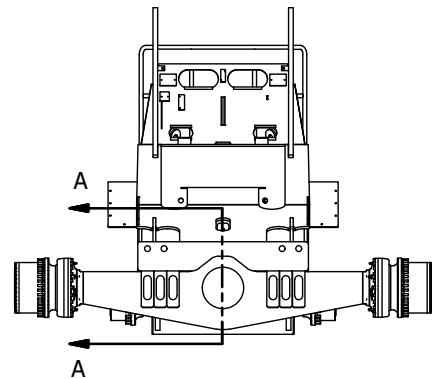
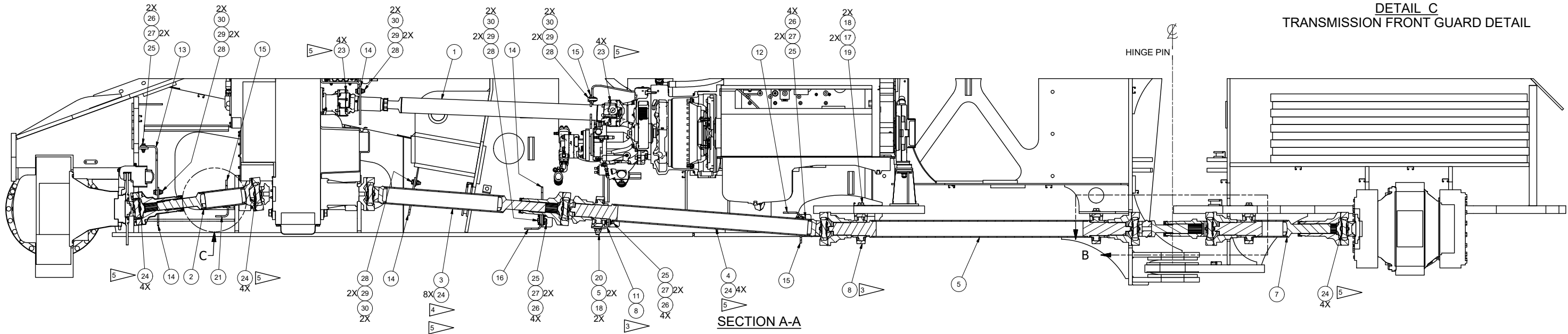
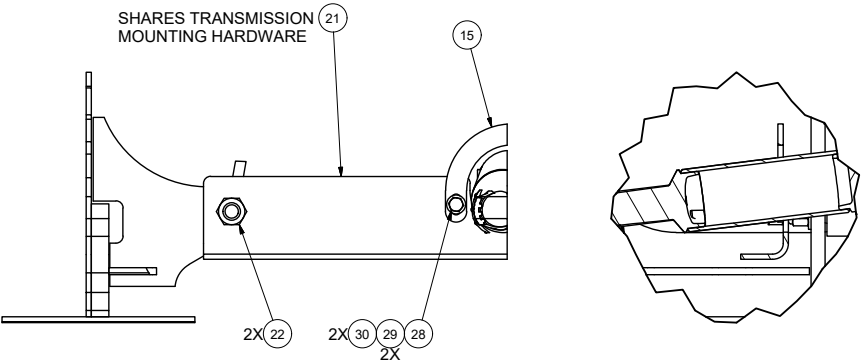
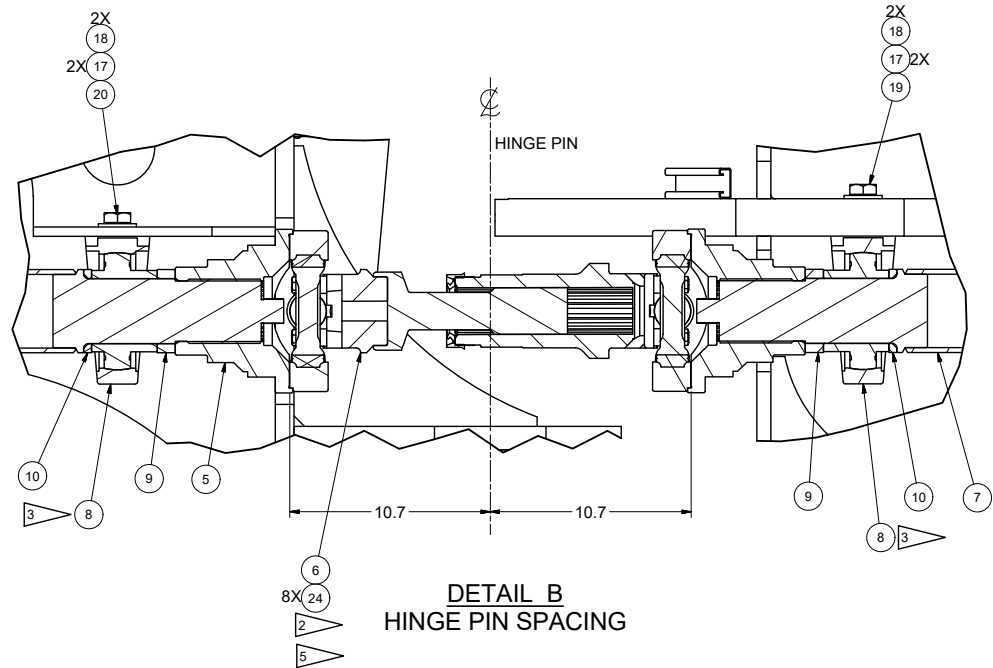


Driveline Installation

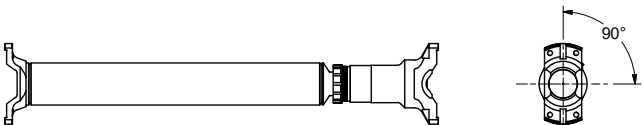
## Driveline Installation

Item	Part No.	Qty	Description	Item	Part No.	Qty	Description
	<b>597653</b>		<b>Driveline Installation</b>				
1	* 598440	1	. Driveline Assembly	16	598784	1	. Bracket, Driveline Guard
2	* 598442	1	. Driveline Assembly	17	221780W	16	. Washer
3	* 598441	1	. Driveline Assembly	18	302406W	8	. Locknut
4	* 598445	1	. Driveline Assembly	19	Y19C-M24130	4	. Capscrew
5	* 598446	1	. Driveline Assembly	20	293729W	4	. Capscrew
6	* 598443	1	. Driveline Assembly	21	598783	1	. Bracket, Driveline Guard
7	* 598444	1	. Driveline Assembly	22	221724W	2	. Hex Nut
8	251568	4	. Bearing, Pillow Block	23	221577W	8	. Capscrew
9	598790	2	. Tube, Spacer	24	221575W	32	. Capscrew
10	598791	2	. Tube, Spacer	25	R13717	14	. Capscrew
11	598785	1	. Bracket, Driveline Guard	26	302402W	14	. Locknut
12	598786	1	. Bracket, Driveline Guard	27	221771W	28	. Washer
13	598787	1	. Bracket, Driveline Guard	28	Y19C-M1650	14	. Capscrew
14	598788	4	. Plate, Driveline Guard	29	234271	28	. Washer
15	598789	3	. Plate, Driveline Guard	30	302404W	14	. Locknut

\* See Separate Coverage



598441  
EXAMPLE OF IN-PHASE SHAFT  
YOKES ARE ALIGNED  
U-JOINTS REMOVED FOR CLARITY



598441  
EXAMPLE OF 90° PHASE YOE ENDS  
U-JOINTS REMOVED FOR CLARITY  
CLOCK SLIP YOE END AS SHOWN

NOTES:

1. INSTALL DRIVESHAFTS ITEMS 3, 4, 5, 6, & 7 ALONG VEHICLE CENTERLINE.
2. WITH THE BOGIE INLINE WITH THE CHASSIS CENTER LINE, SET THE DISTANCE FROM THE MOUNTING FACE OF ITEM 5 TO THE HINGE PIN CENTERLINE EQUAL TO THE DISTANCE FROM THE MOUNTING FACE OF ITEM 7 TO THE HINGE PIN CENTERLINE WITHIN  $\pm 1/16$  INCH. REFERENCE DETAIL B FOR DIMENSION
3. AFTER INSTALLING BEARING, TORQUE DRIVE SHAFT BEARING STUB NUT TO 380-400 FT LBS.
4. PHASING OF DRIVE SHAFT:  
THE NOTED SHAFT WILL BE INSTALLED 90° OUT OF PHASE. ALL OTHER DRIVE SHAFTS WILL HAVE THEIR YOKES IN-PHASE.  
A IN-PHASE DRIVE SHAFT WILL HAVE THE YOKES ALIGNED, SEE EXAMPLE.
5. TORQUE 1/2" NF BOLTS TO 108-113 FT-LBS.