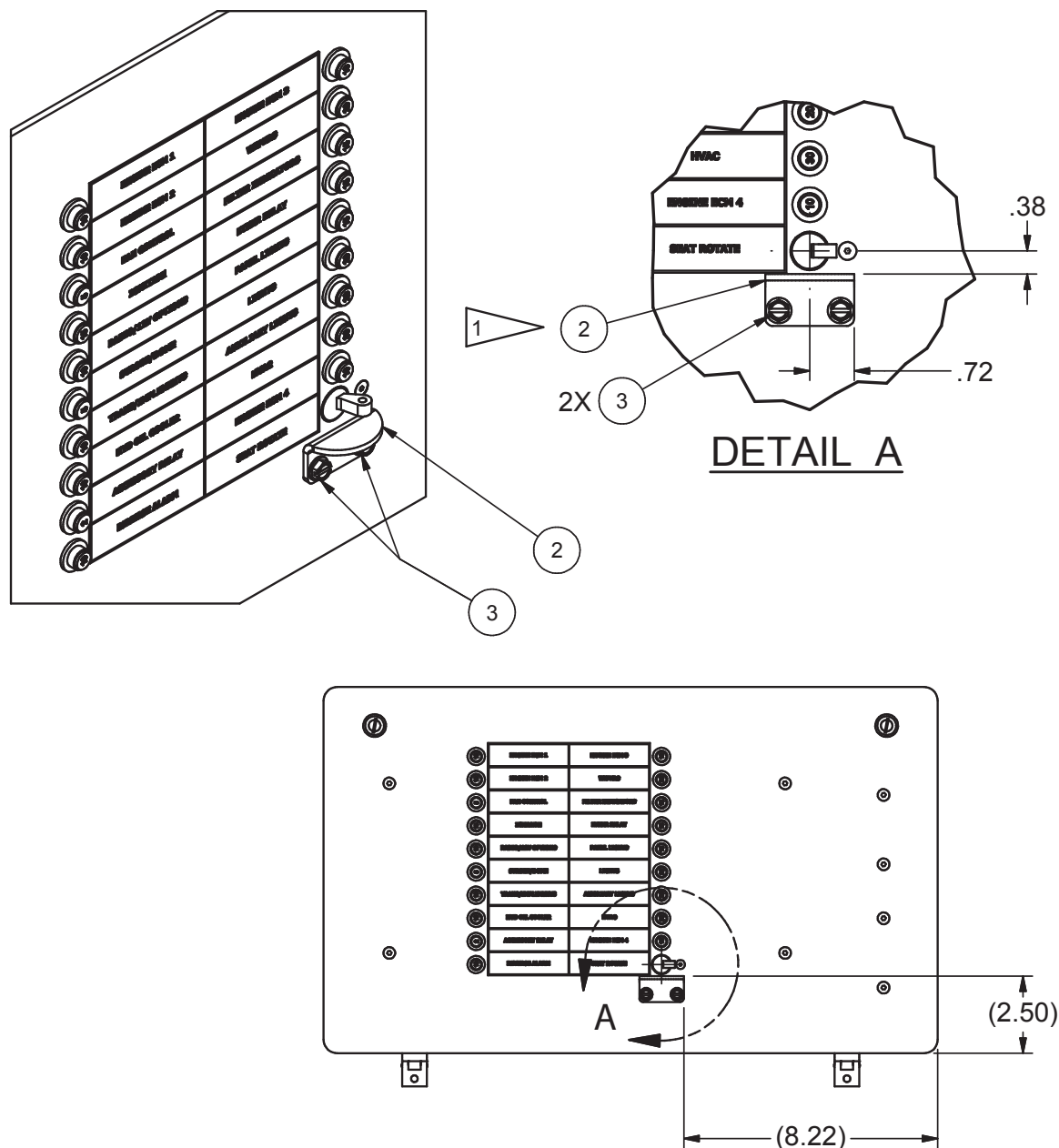


Circuit Breaker Guard Kit



NOTES:

- 1 USE ITEM 3 (SELF TAP SCREW) TO INSTALL ITEM 2 (GUARD BRACKET) AS DIMENSIONED. ENSURE THAT THERE ARE NO WIRES/COMPONENTS THAT WOULD INTERFERE WITH SCREWS PRIOR TO COMPLETING INSTALLATION. 2 EXTRA SCREWS SUPPLIED WITH KIT.

Item	Part No.	Qty	Description
	597539		Circuit Breaker Guard Kit
2	597541	1	. Bracket, Guard
3	233244	4	. Screw, Machine