

---

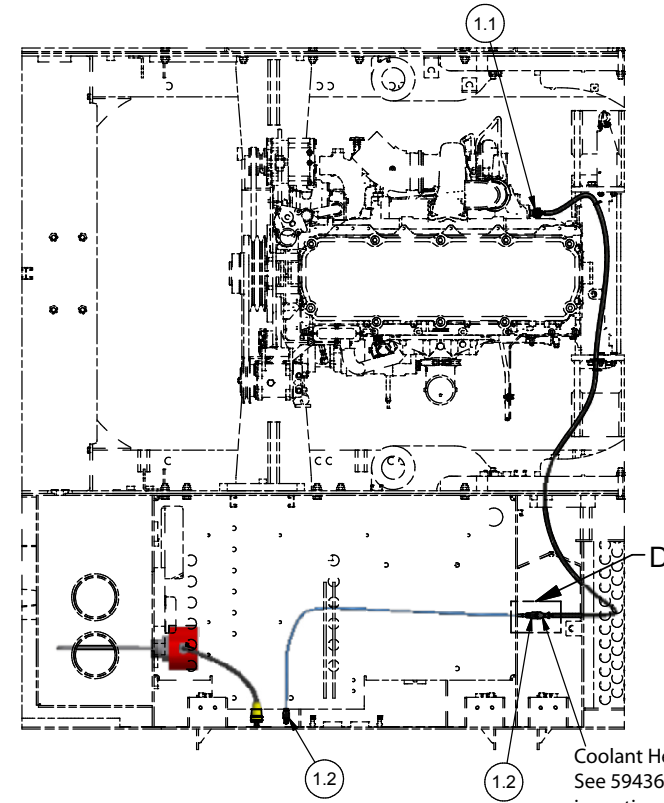
Installation, Engine Coolant Heater

---

## Installation, Engine Coolant Heater

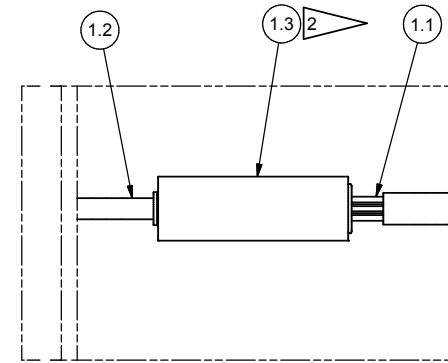
---

Item	Part No.	Qty	Description	Item	Part No.	Qty	Description
	<b>594306</b>		<b>Installation, Engine Coolant Heater</b>				
1.2	250026	1	. Cord, Extension				
1.3	2509754	3IN	. Tube, Heat Shrink				
1.4	CBT0009623	AR	. Cable Tie				
1.5	252601	AR	. Fitting				

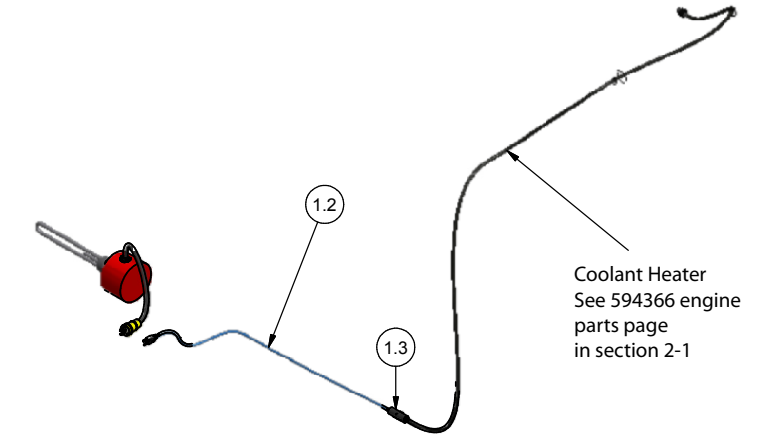


**SECTION C-C**

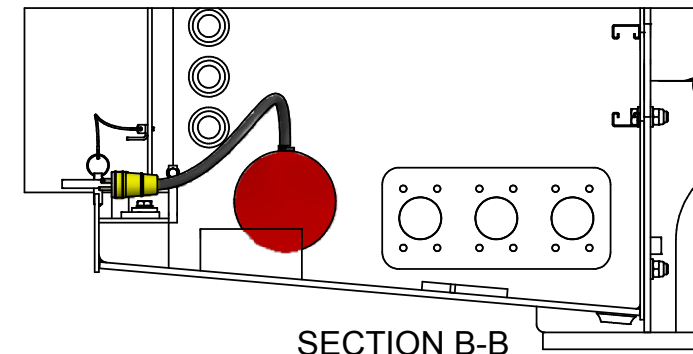
Coolant Heater  
See 594366 engine parts page in section 2-1



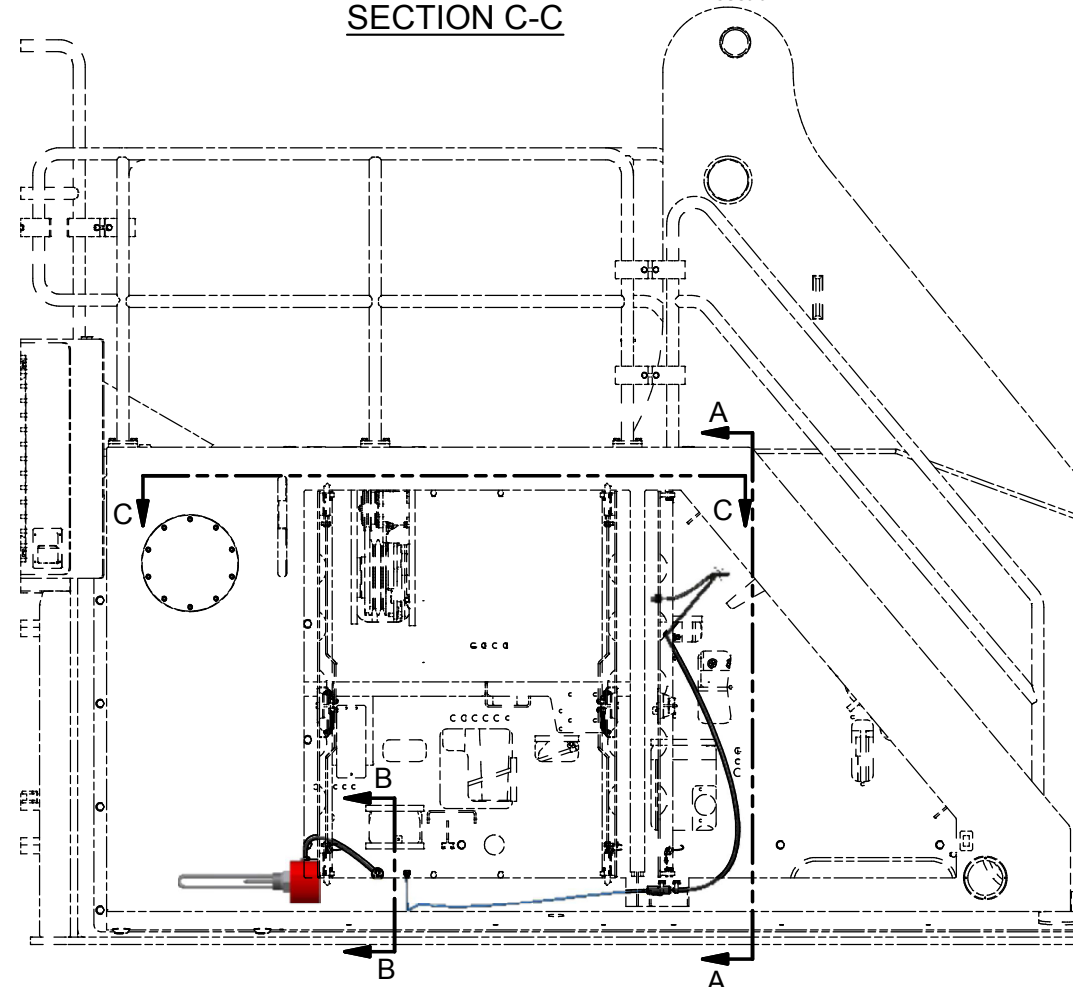
**DETAIL D**



Coolant Heater  
See 594366 engine parts page in section 2-1



**SECTION B-B**



**SECTION A-A**

Coolant Heater  
See 594366 engine parts page in section 2-1

Coolant Heater 3

**NOTES:**

2 CONNECT ITEM COOLANT HEATER AND ITEM 1.2 THEN SEAL WITH ITEM 1.3.

3 USE ITEM 1.4, ITEM 1.5 AND EXISTING WIRE HARNESS TO KEEP ITEM COOLANT HEATER OFF OF ENGINE.