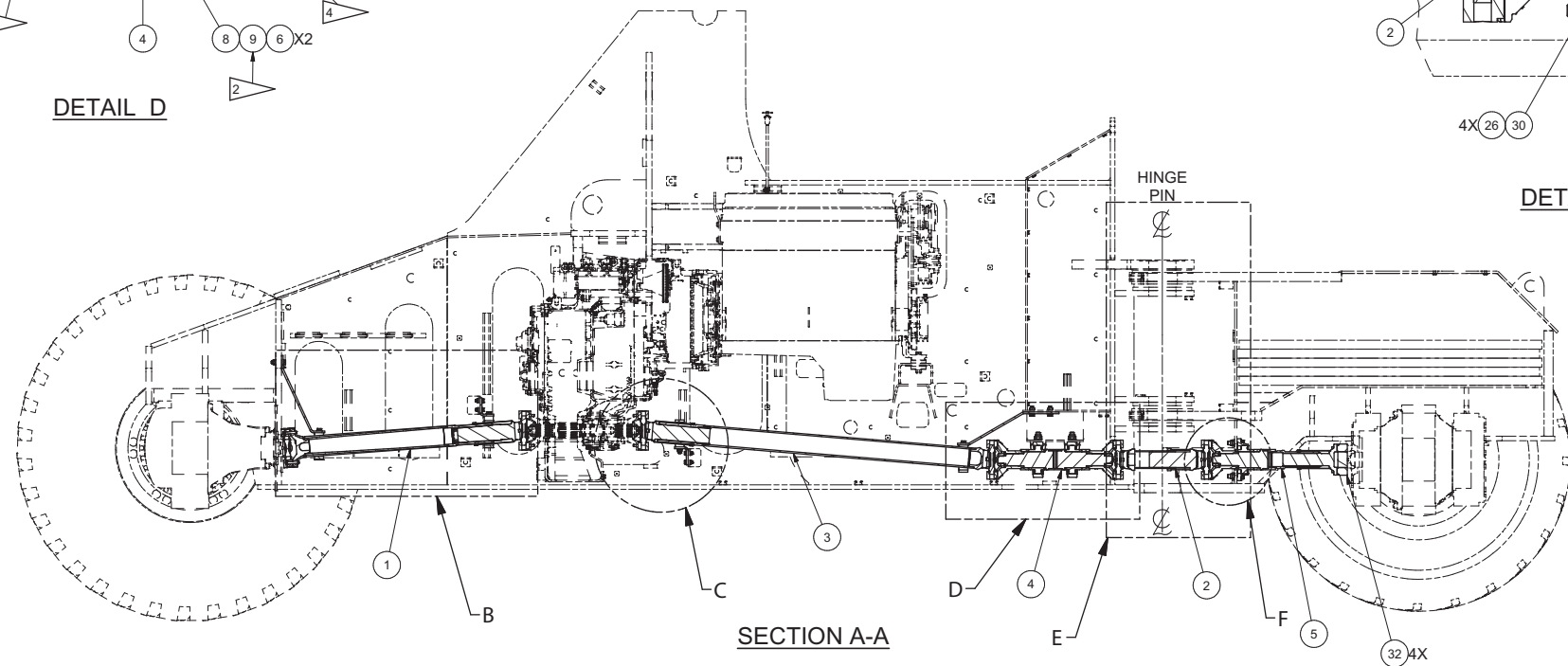
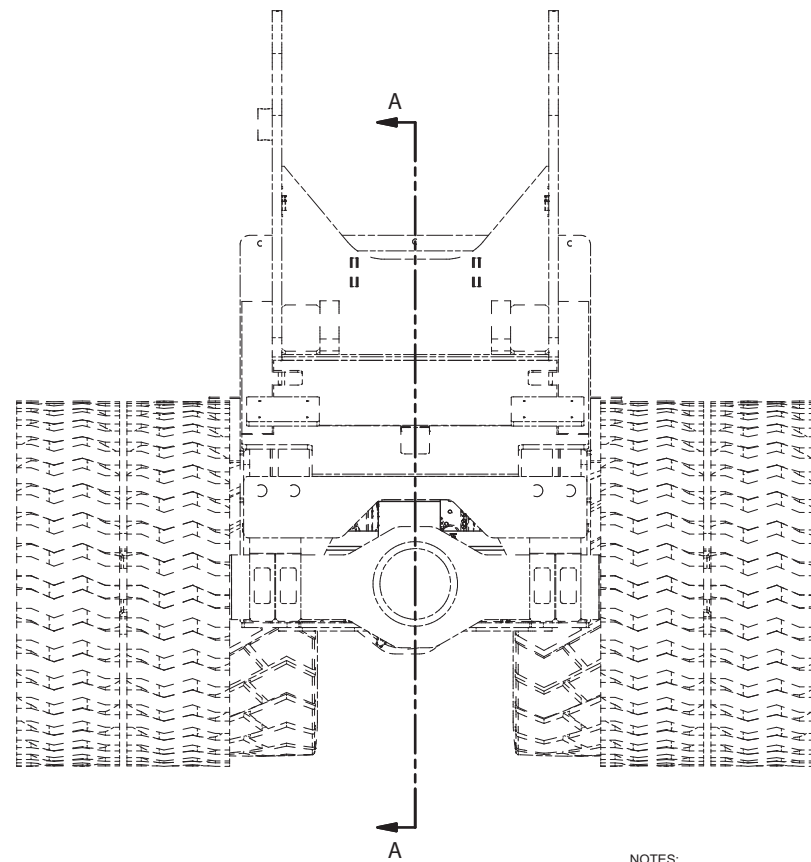
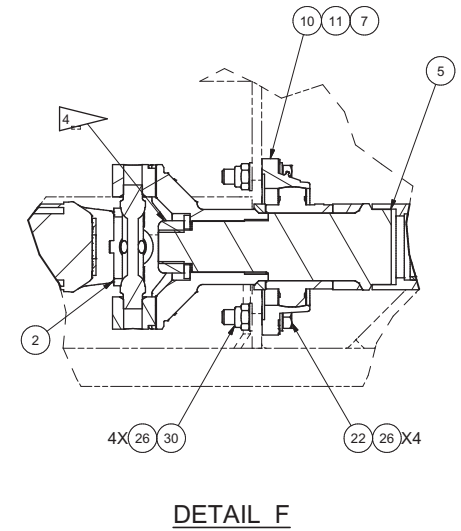
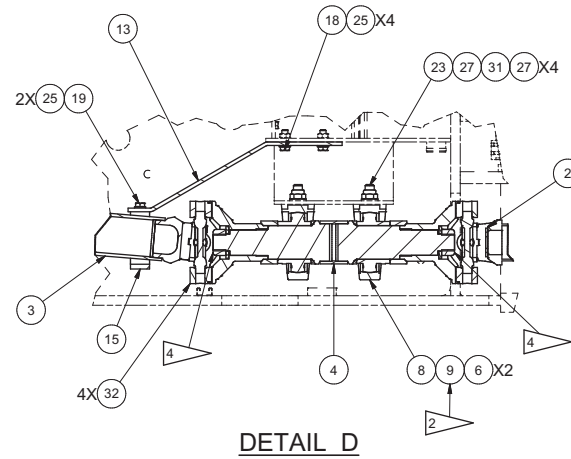
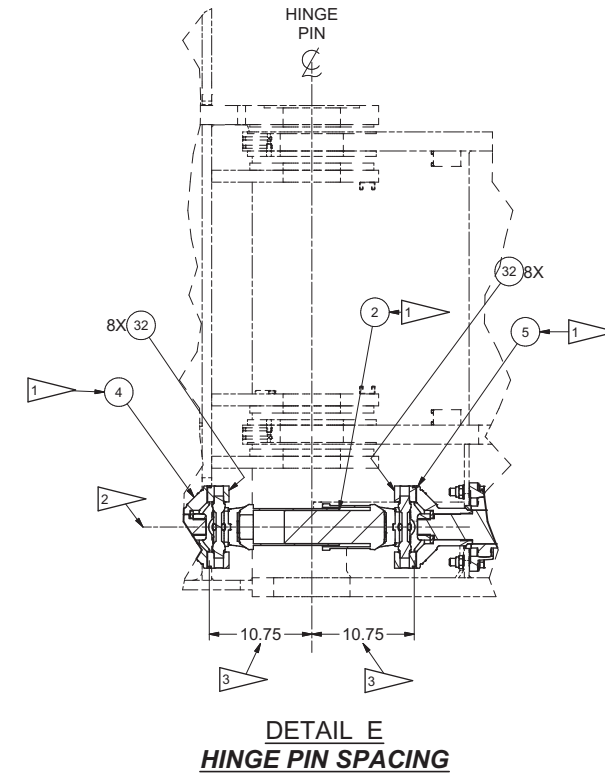
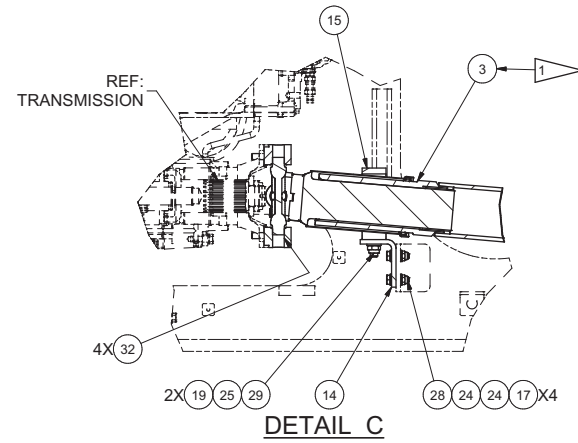
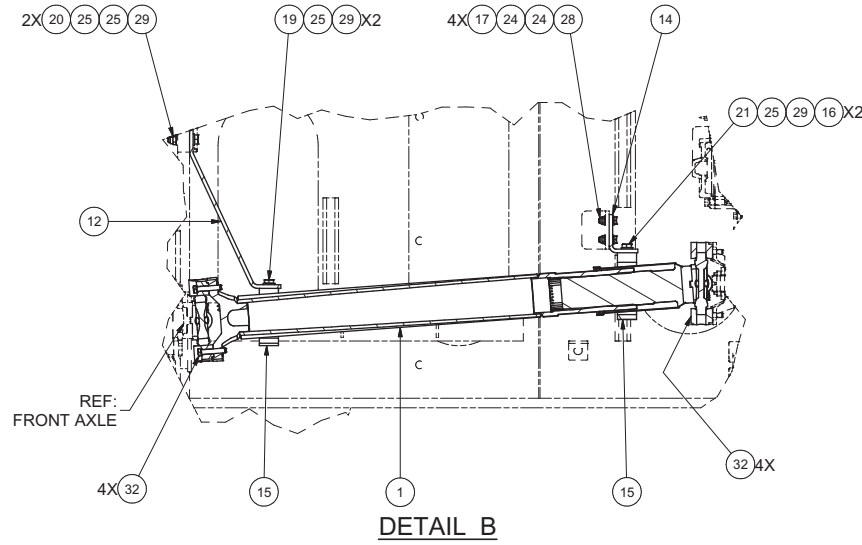

Installation, Drivelines

Installation, Drivelines

Item	Part No.	Qty	Description	Item	Part No.	Qty	Description
594279 Installation - Drivelines							
1	*a 591376	1	. Driveline	20	Y19C-M1670	2	. Capscrew
2	*a 248963	1	. Driveline Assembly	21	Y078545	2	. Capscrew
3	*a*b 594596	1	. Driveline Assembly	22	293712W	4	. Capscrew
4	*a*b 594783	1	. Driveline Assembly	23	293729W	4	. Capscrew
5	*a 594593	1	. Driveline Assembly	24	296422W	16	. Hard Washer
6	251568	2	. Bearing, Pillow Block	25	296426W	16	. Hard Washer
7	249405	1	. Bearing	26	296430W	8	. Hard Washer
8	580335	2	. Spacer	27	296434W	8	. Hard Washer
9	580336	2	. Spacer	28	302402W	8	. Locknut
10	594562	1	. Tube, Spacer	29	302404W	10	. Locknut
11	594563	1	. Tube, Spacer	30	302405W	4	. Locknut
12	594804	1	. Plate, Front Shield	31	302406W	4	. Locknut
13	594813	1	. Plate, Rear Shield	32	221577W	36	. Capscrew
14	591930	2	. Plate, Rear Shield				
15	528830	4	. Plate, Shield				
16	593771	2	. Plate, Spacer				
17	293647W	8	. Capscrew				
18	Y19C-M1645	4	. Capscrew				
19	Y19C-M1650	6	. Capscrew				
				*a	See Separate Coverage		
				*b	L460-202 had kit 601173 installed after shipment. These drivelines were replaced, and additional guarding was installed. See parts page for that kit.		



NOTES:

1. SET ITEMS 2, 4, & 5 BEFORE INSTALLING ITEM 3.
2. ITEM 6 (2 PLACES) SHOULD BE ADJUSTED SO THAT ITEMS 2, 4, & 5 ARE IN LINE ON A COMMON CENTERLINE WHEN THE BOGIE IS IN LINE WITH THE CHASSIS (BOTH HAVE COMMON CENTERLINE).
3. WITH THE BOGIE IN LINE (WITH A COMMON CENTERLINE) WITH THE CHASSIS, THE DISTANCE FROM THE MOUNTING FACE OF ITEM 4 TO THE HINGE PIN CENTERLINE MUST BE EQUAL TO THE DISTANCE FROM THE MOUNTING FACE OF ITEM 5 TO THE HINGE PIN CENTERLINE WITHIN .063". REFERENCE DETAIL E FOR DIMENSIONS.
4. TORQUE TO 475 FT-LBS AFTER INSTALLATION.
5. INSTALL ITEMS 1, 2, 3, & 5 USING INCLUDED HARDWARE.