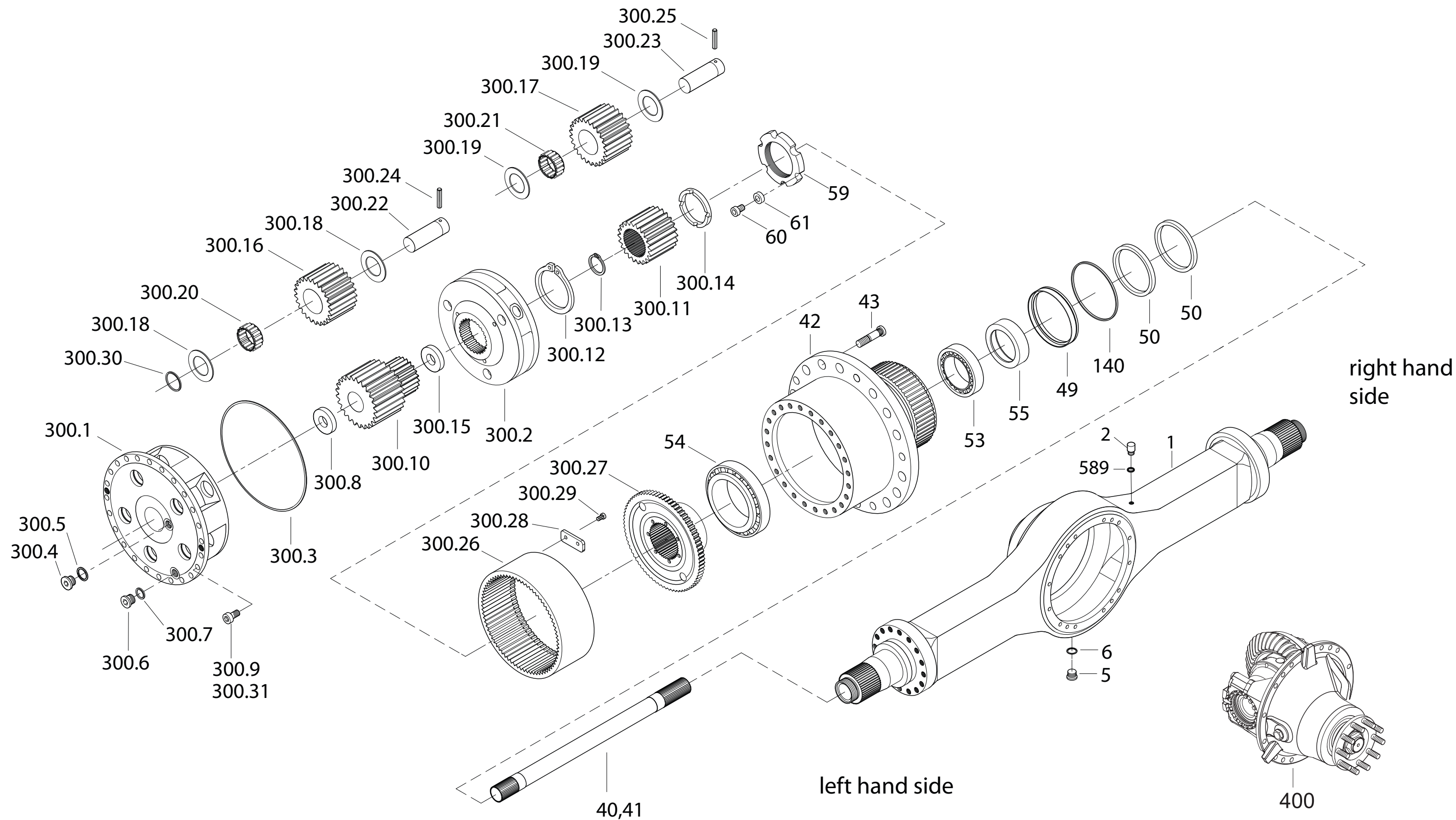
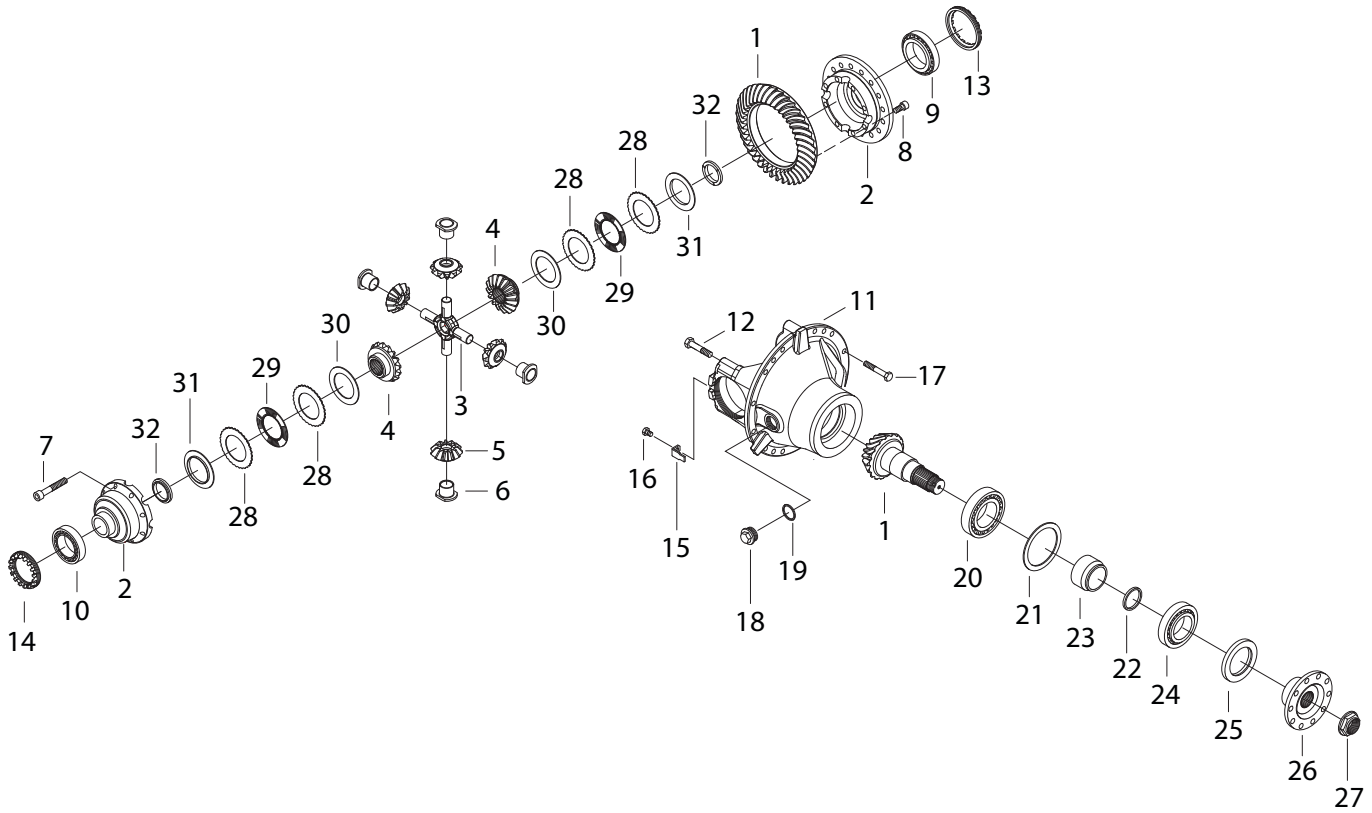

Front Axle

Front Axle

Item	Part No.	Qty	Description	Item	Part No.	Qty	Description
	594014		Front Axle				
1	596743	1	. Axle Housing	300.14	592953	1	.. Thrust Ring
2	592903	1	. Breather	300.15	592947	1	.. Thrust Ring
5	592904	1	. Screw Plug	300.16	592954	5	.. Planetary Gear
6	592905	1	. Sealing Ring	300.17	592955	3	.. Planetary Gear
40	596744	1	. Axle Shaft; Left Side	300.18	592956	10	.. Thrust Washer
41	596745	1	. Axle Shaft; Right Side	300.19	592957	6	.. Thrust Washer
42	592907	2	. Wheel Hub	300.20	592958	5	.. Needle Bearing
43	592908	76	. Wheel Stud	300.21	592959	3	.. Needle Bearing
49	592909	2	. Ring	300.22	592960	5	.. Planetary Pin
50	*f 593119	2	. Radial Seal Ring Set	300.23	592961	3	.. Planetary Pin
53	592911	2	. Tapered Roller Bearing	300.24	592962	5	.. Locking Pin
54	592911	2	. Tapered Roller Bearing	300.25	592963	3	.. Locking Pin
55	596746	2	. Ring	300.26	*d 592964	1	.. Ring Gear
59	*e 592913	2	. Nut	300.27	*d 592965	1	.. Ring Gear Carrier
60	592914	2	. Hexagon Socket Screw	300.28	*d 592966	3	.. Retainer
61	592915	2	. Ring	300.29	*d 592967	6	.. Hexagon Screw
140	592916	2	. O-Ring	300.30	592968	5	.. O-Ring
300	593144	2	. Planetary Assembly	300.31	592969	22	.. Hexagon Socket Screw
300.1	592942	1	.. Planetary Housing	400	*b 596747	1	. Differential And Carrier Assembly
300.2	592943	1	.. Planetary Carrier	589	592935	1	. Sealing Ring
300.3	592944	1	.. O-Ring				
300.4	592945	1	.. Screw Plug				
300.5	592905	1	.. Sealing Ring		*a		See Separate Coverage - Page 4
300.6	592946	1	.. Screw Plug		*b		See Separate Coverage - Page 5
300.7	592932	1	.. Sealing Ring		*c		See Separate Coverage - Page 6
300.8	592947	1	.. Thrust Ring		*d		Included in Internal Gear and Hub Assembly 593118
300.9	592948	24	.. Hexagon Socket Screw		*e		Use Spanner 593401
300.10	592949	1	.. Sun Gear		*f		Use Sleeve Driver 593403
300.11	592950	1	.. Sun Gear				
300.12	592951	1	.. Circlip				
300.13	592952	1	.. Circlip				



Differential And Carrier Assembly



Item	Part No.	Qty	Description	Item	Part No.	Qty	Description
	596747		Differential And Carrier Assy				
1	*c NSS	1	. Bevel Wheel Set	20	592998	1	. Tapered Roller Bearing
2	*a 592973	1	. Differential Housing	21	592999	1	. Disk
3	*a *b 592975	1	. Differential Spider	22	593000	1	. Thrust Washer
4	*a *b 592977	2	. Differential Side Gear	23	593002	1	. Bushing
5	*a *b 592979	4	. Differential Pinion	24	593003	1	. Tapered Roller Bearing
6	*a *b 592980	4	. Bushing	25	*d 593004	1	. Radial Seal Ring
7	*a 592981	12	. Hexagon Socket Screw	26	596748	1	. Drive Flange
8	*a 592983	16	. Hexagon Screw	27	*c NSS	1	. Adjusting Nut
9	592984	1	. Tapered Roller Bearing	28	*a *b 593008	10	. Outer Disk
10	592985	1	. Tapered Roller Bearing	29	*a *b 593009	10	. Inner Disk
11	596749	1	. Differential Carrier	30	*a *b 593011	2	. Disk
12	592987	4	. Hexagon Socket Screw	31	*a *b 593013	2	. Disk
13	*e 592989	1	. Setting Ring	32	*a *b 593039	2	. Thrust Ring
14	*e 592990	1	. Setting Ring				
15	592992	2	. Lock Plate				
16	592967	2	. Hexagon Screw				
17	592993	24	. Hexagon Screw				
18	592994	1	. Screw Plug				
19	592996	1	. Sealing Ring				
				*a	Included in Differential Body Kit 593122		
				*b	Included in Spider and Side Gear Kit 593123		
				*c	Included in Ring & Pinion Kit 593124		
				*d	Use Sleeve Driver 593402		
				*e	Use Spanner 593404		