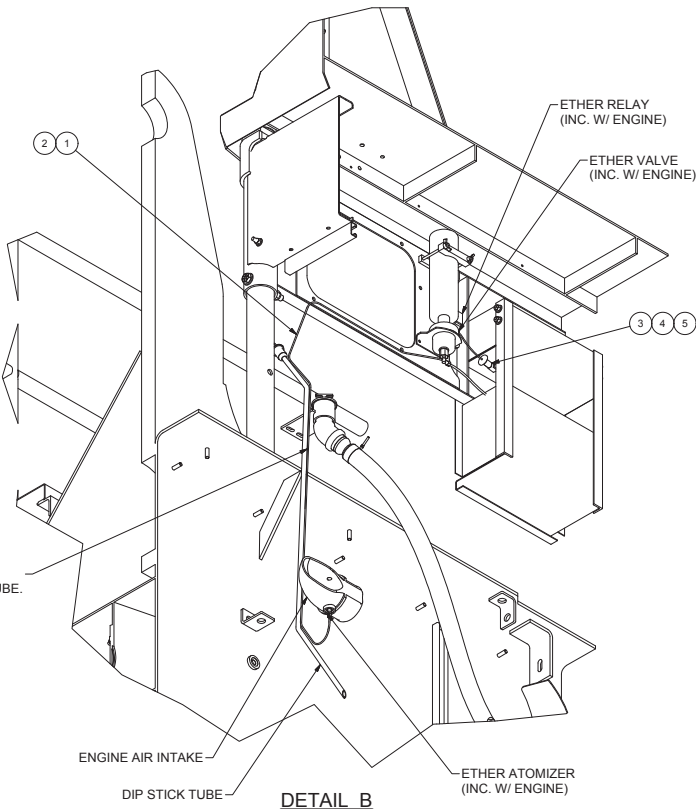
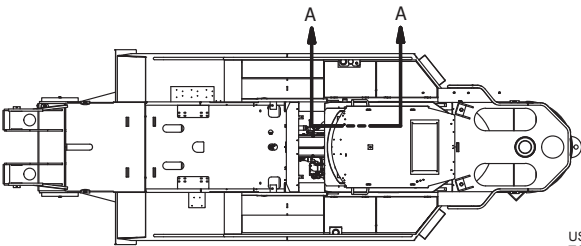


Ether Start Installation

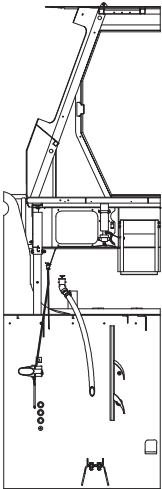
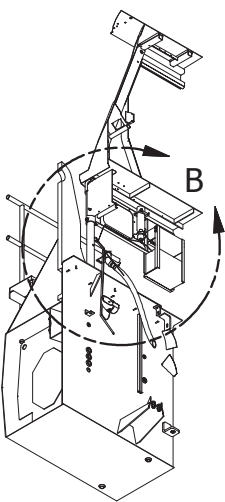
ETHER START INSTALLATION INSTRUCTIONS

- 1 MOUNT ETHER BOTTLE BRACKET AND VALVE INSIDE RH SUPERSTRUCTURE.
- 2 INSTALL ETHER ATOMIZER (INC. W/ ENGINE) ON BOTTOM FITTING IN LAST ELBOW OF INTAKE TUBE BEFORE THE INTAKE MANIFOLD.
- 3 PLACE ATOMIZER WITH PAINT DOT TOWARDS UPSTREAM AIR FLOW. PAINT DOT INDICATES DIRECTION OF INJECTOR ORIFICE. LUBE O-RING AND THREADS BEFORE INSTALLING.
- 4 RUN COPPER TUBING FROM INJECTOR UP DIP STICK TUBE AND THEN ALONG BOTTOM EDGE OF SUPERSTRUCTURE TO A 90° FITTING ON ETHER VALVE. FLARE ENDS.
- 5 INSTALL SHEATHING AND SECURE COPPER TUBE WITH ZIP TIES.
- 6 MOUNT RELAY (INC. W/ ENGINE) BESIDE ETHER BOTTLE.
- 7 WIRE IN DEUTSCH PLUG ON VALVE. TOOL REQUIRED.

NOTE: SOME ITEMS REQUIRE SPECIAL TOOLS FOR PROPER ASSEMBLY. REFER TO THE PIECE PART DRAWING FOR THE TOOL PART NUMBER AND SETTING INFORMATION.



DETAIL B



SECTION A-A



NOTE: PAINT DOT ON ATOMIZER REPRESENTS DIRECTION OF NOZZLE AND SHOULD BE POINTED UPSTREAM TOWARDS CAC.

Item	Part No.	Qty	Description	Item	Part No.	Qty	Description
	592606		Ether Start Installation				
1	45990029	8'	. Copper Tube				
2	587019	8'	. Loom, Wire				
3	243503	1	. Receptacle				
4	243505	1	. Receptacle, Wedgelock				
5	243237	2	. Pin				

* See Separate Coverage