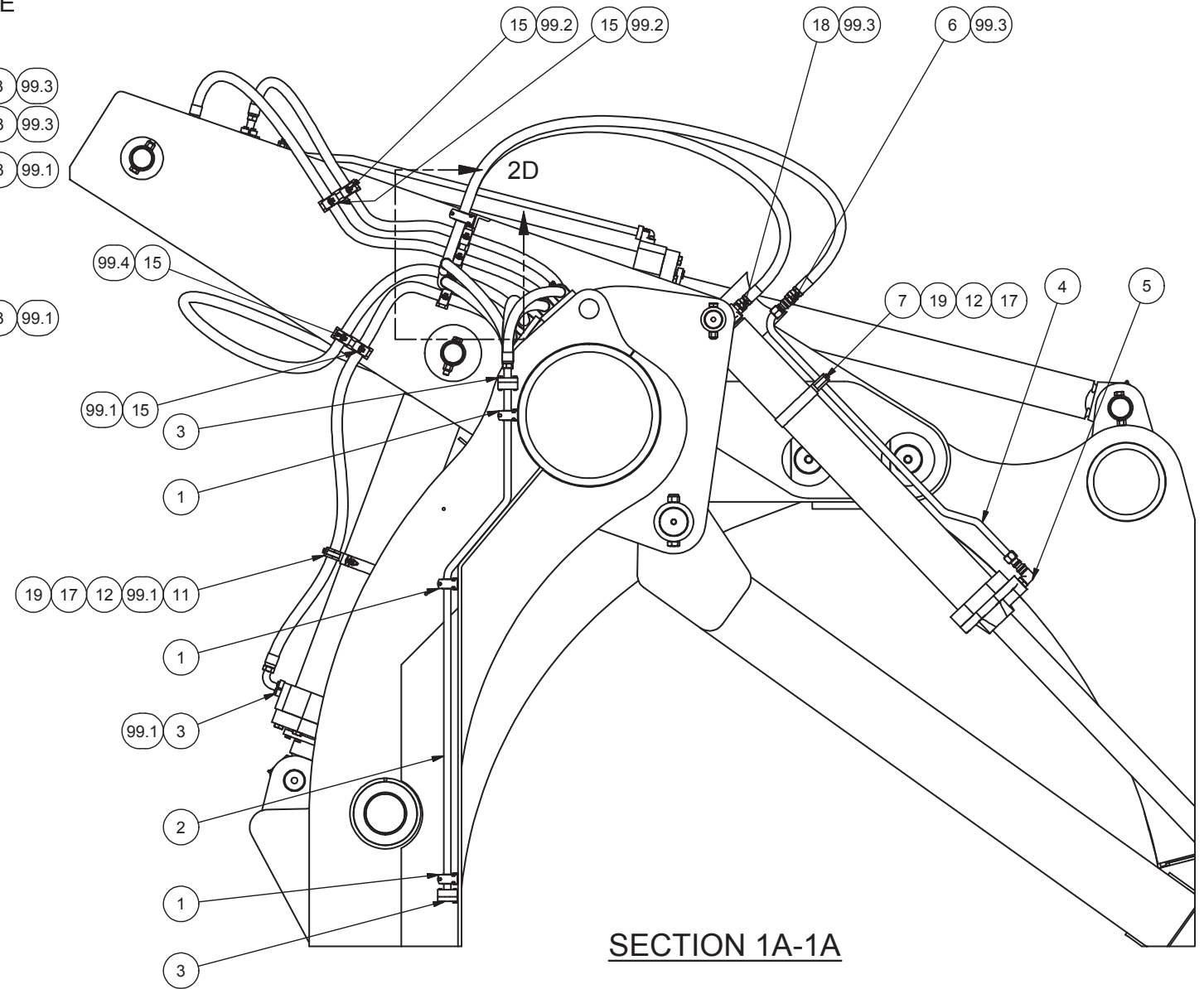
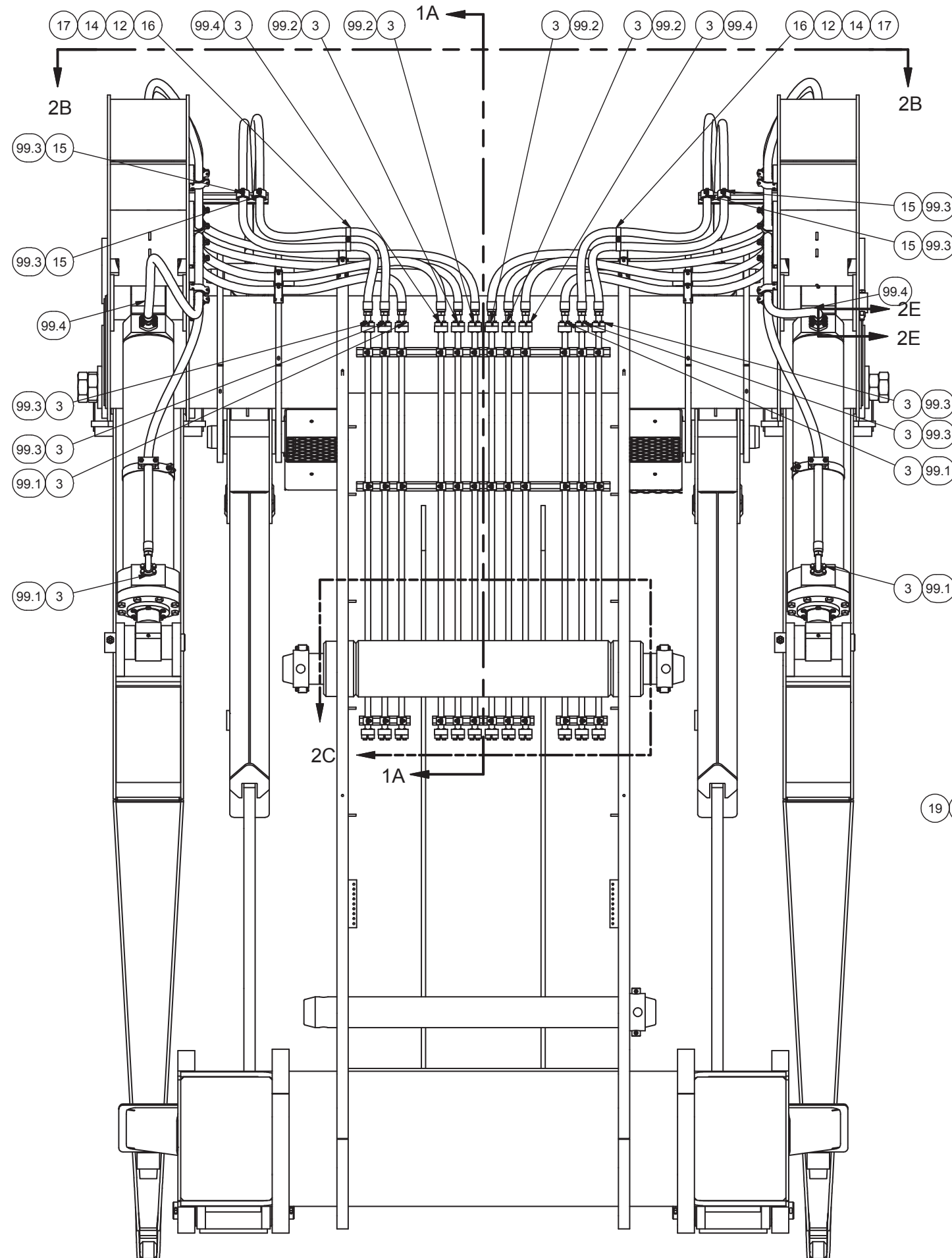

Hydraulic System-Carriage

Hydraulic System-Carriage

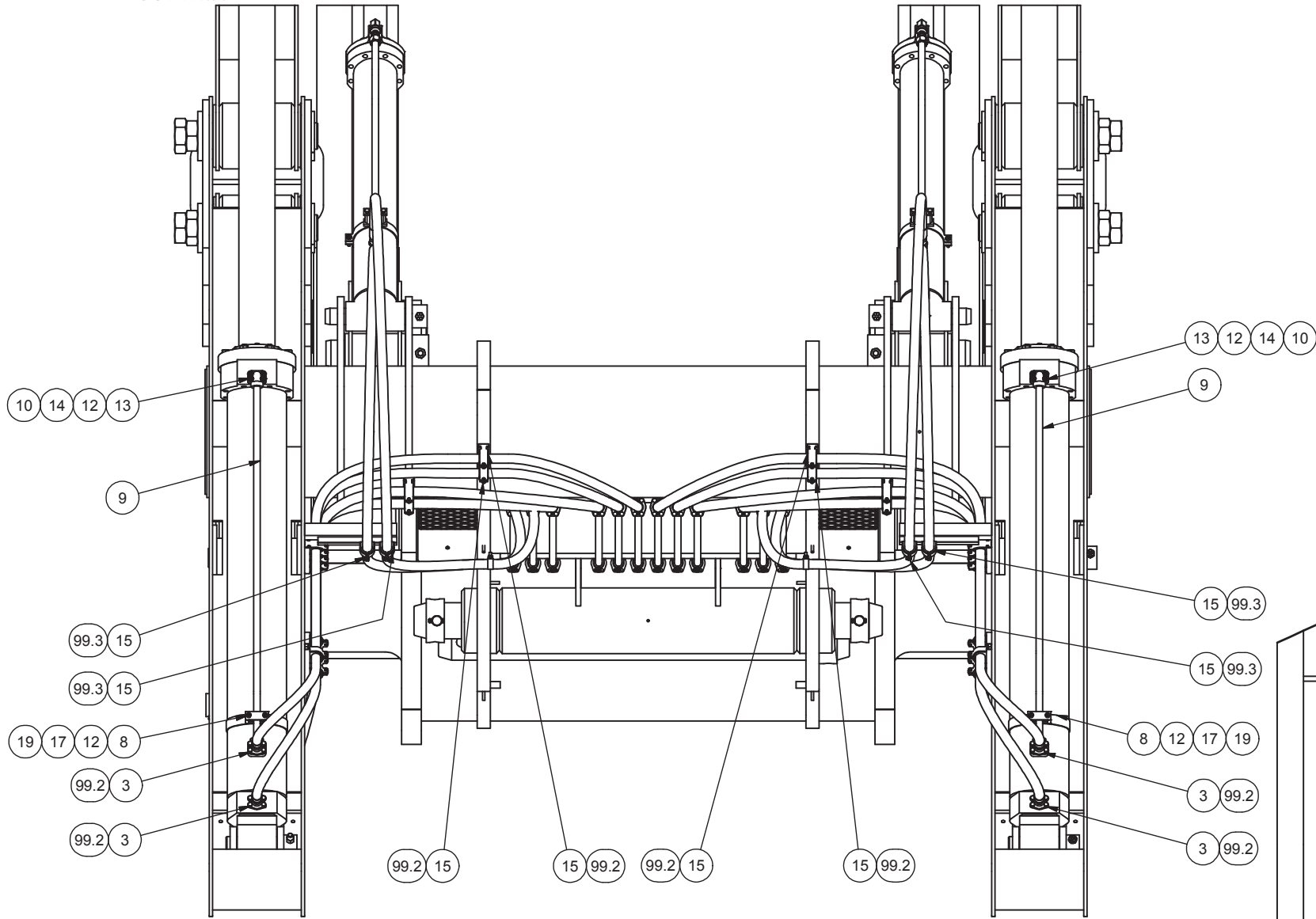
Item	Part No.	Qty	Description	Item	Part No.	Qty	Description
	591305		Hydraulic System-Carriage				
1	231250	36	. Clamp	15	231248	28	. Clamp
2	563158	12	. Tube	16	209700	4	. Clamp
3	11759	30	. Kit, Split Flange	17	R13811191	8	. Locknut
	203443	1	. . O-Ring	18	209323	2	. Fitting
4	558941	2	. Tube	19	R13801813	6	. Capscrew
5	209715	2	. Fitting	20	508253	2	. Spacer
6	209442	2	. Fitting	21	203446	2	. O-Ring
7	562456	2	. Clamp	22	203443	2	. O-Ring
8	572078	2	. Clamp	23	508254	4	. Flange, Split
9	572186	2	. Tube	99	592114	1	. Kit, Hose
10	15866W	4	. O-Ring	99.1	237079	2	. . Hose Assembly
11	572891	2	. Clamp	99.2	229424	4	. . Hose Assembly
12	221767W	32	. Hard Washer	99.3	239245	4	. . Hose Assembly
13	R13811039	12	. Capscrew	99.4	239246	2	. . Hose Assembly
14	Y73G-0620	6	. Capscrew				



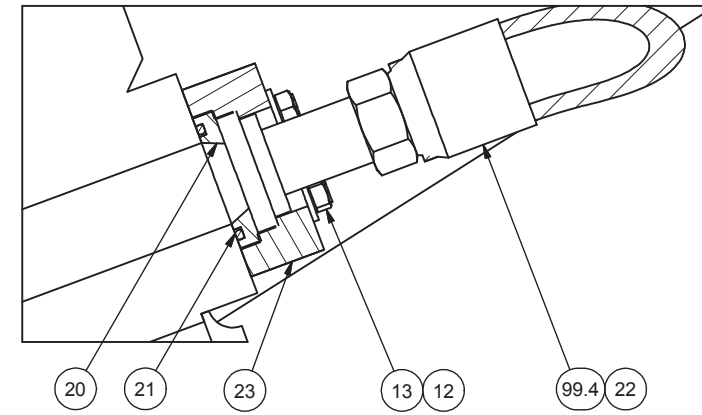
NOTES:

1. CERTAIN VIEWS SHOW ONLY ONE SIDE OF INSTALLATION.
THE OPPOSING SIDE IS THE SAME.

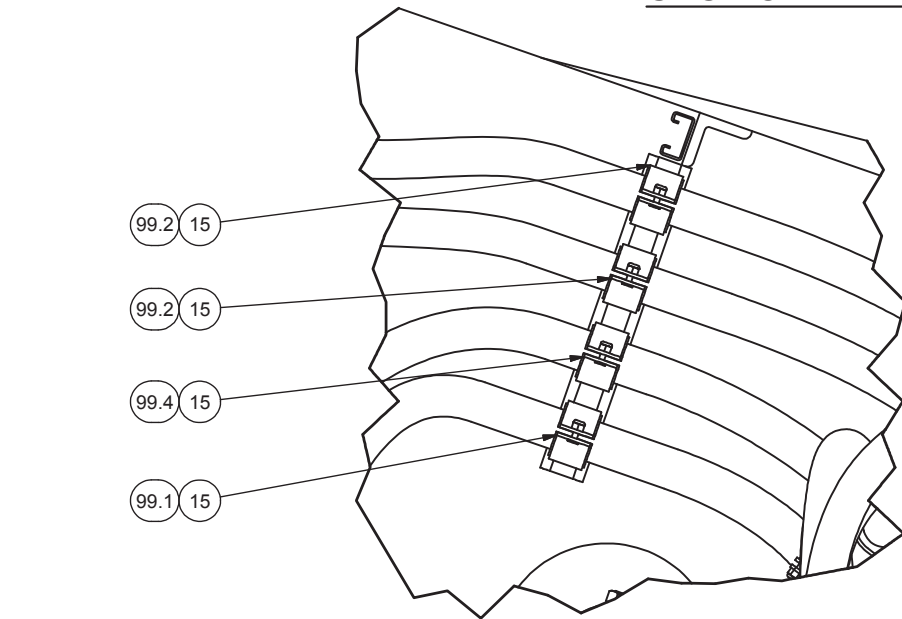
B B



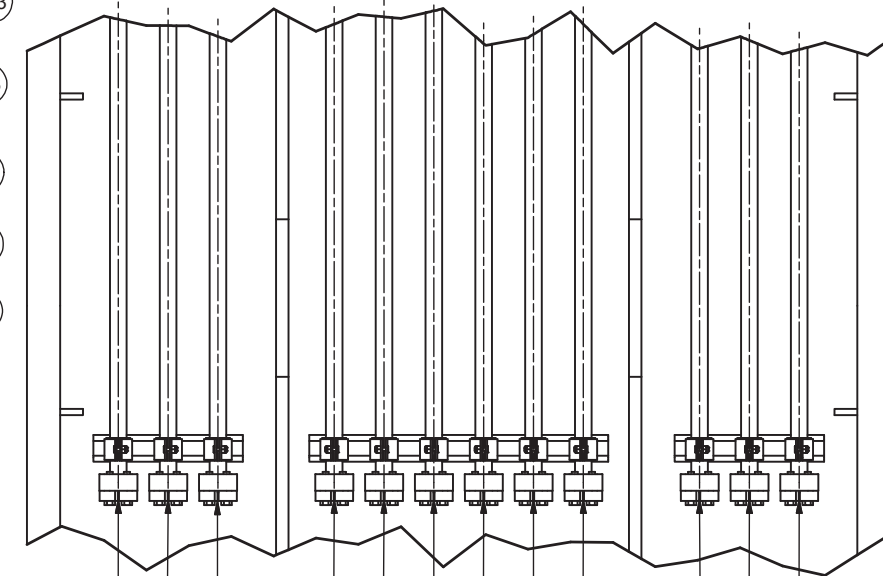
SECTION 2B-2B



SECTION 2E-2E



DETAIL 2D



- AUX HOLDDOWN CYLINDER BASE
- AUX HOLDDOWN CYLINDER STEM
- KICK OFF CYLINDER STEM
- KICK OFF CYLINDER BASE
- HOLDDOWN CYLINDER BASE
- HOLDDOWN CYLINDER STEM

DETAIL 2C

B B