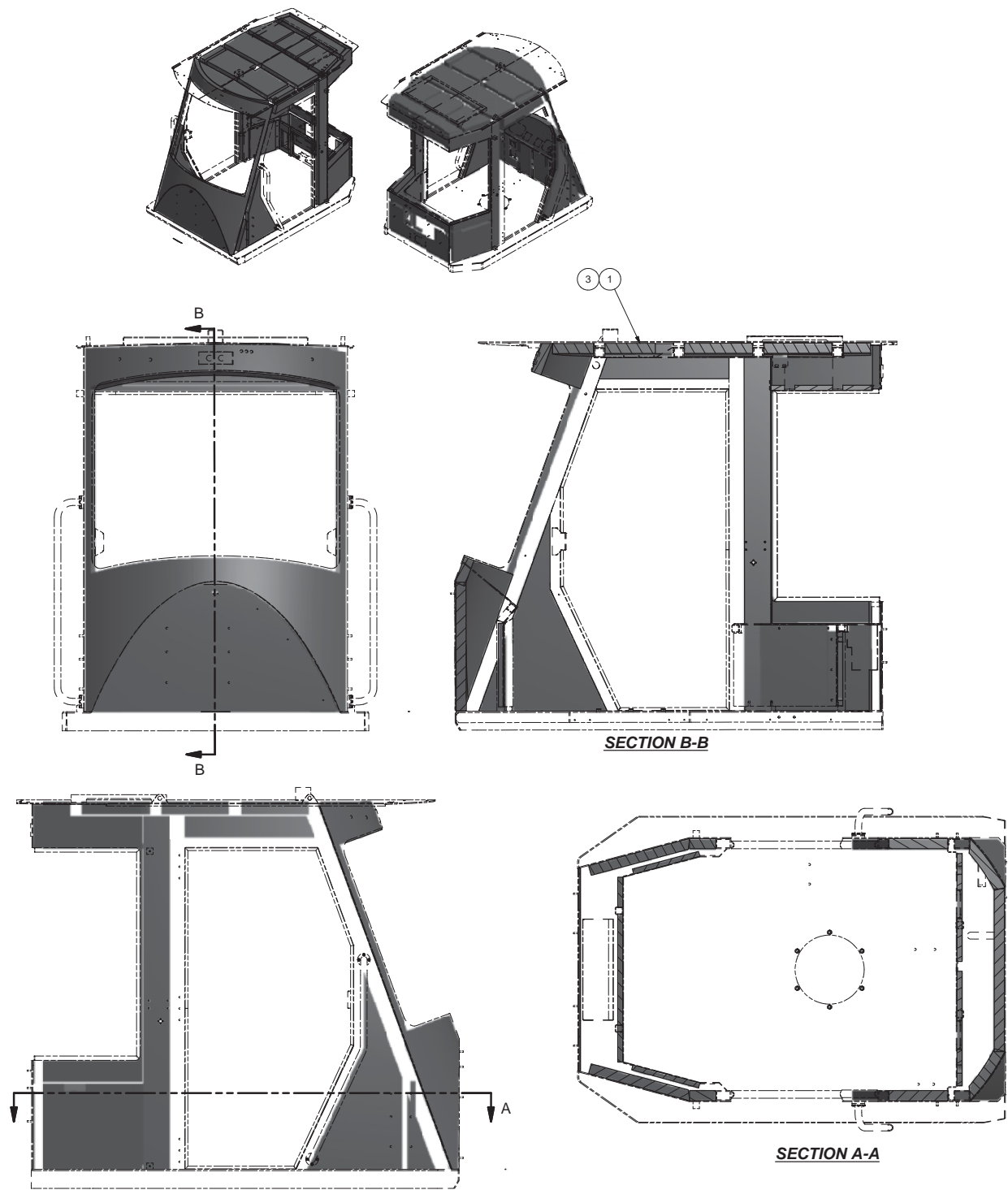


Insulation Installation



NOTES:
1: INSTALL INSULATION USING ADHESIVE, ITEM 3.
2: INSULATION WILL REQUIRE TRIMMING TO FIT.
3: ITEM 1, 2" THICK INSULATION SHOULD BE APPLIED TO ENTIRE INSIDE OF CAB WALLS AND ROOF.
4: ITEM 1, 1" THICK INSULATION SHOULD BE APPLIED TO THE INSIDE OF ALL REMOVABLE PANELS.

Item	Part No.	Qty	Description	Item	Part No.	Qty	Description
	588628		Insulation Installation				
1	593725	1	. Insulation,Cab				
3	217123	1GL	. Adhesive				