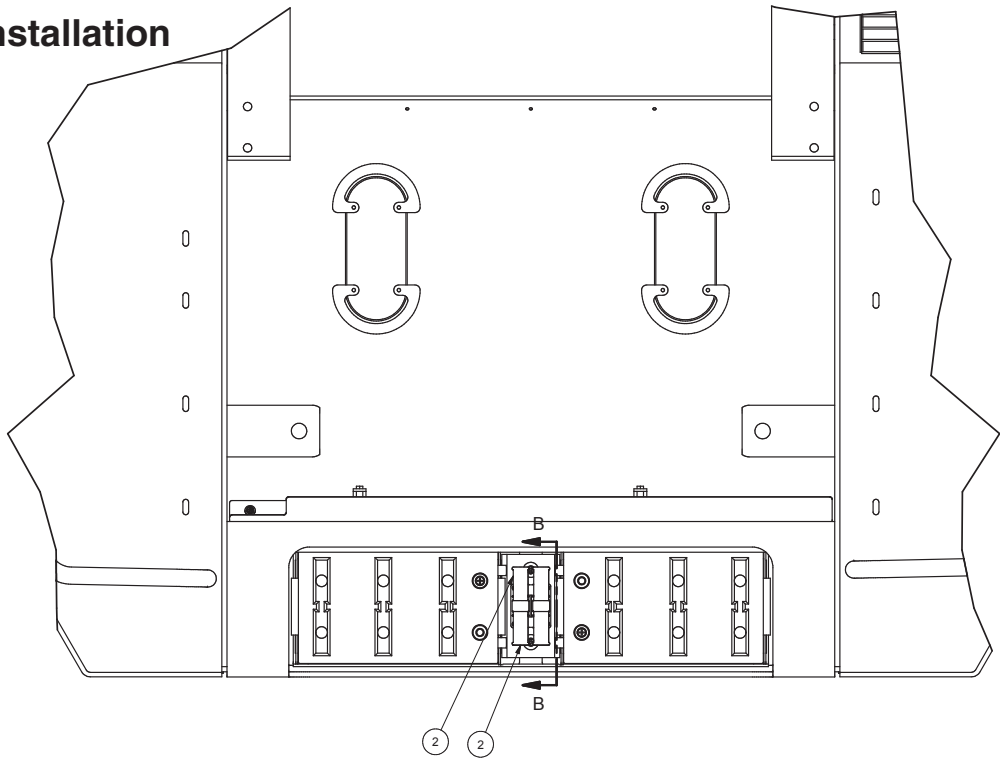
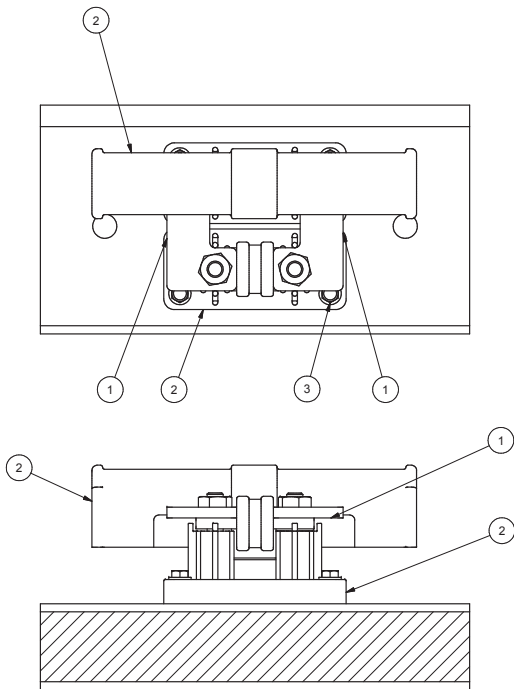


Main Fuse Installation



NOTES:
USE ITEM 4 TO REWORK POSITIVE BATTERY CABLE.
ROUTE CABLE FROM POSITIVE POST THROUGH FUSE
BLOCK FROM BUMPER END, AND FROM ENGINE SIDE
OF FUSE BLOCK TO MASTER BATTERY DISCONNECT
AT RH SIDE OF CHASSIS.



SECTION B-B

Item	Part No.	Qty	Description	Item	Part No.	Qty	Description
583861 Main Fuse Installation							
1	583867	2	. Plate, Terminal Buss	4	*b 254500	2	. Lug, Terminal
2	*a 589582	2	. Kit, Fuse Block				
3	HTB0010003	8	. Capscrew				
					*a See Separate Coverage		
					*b Not Illustrated		