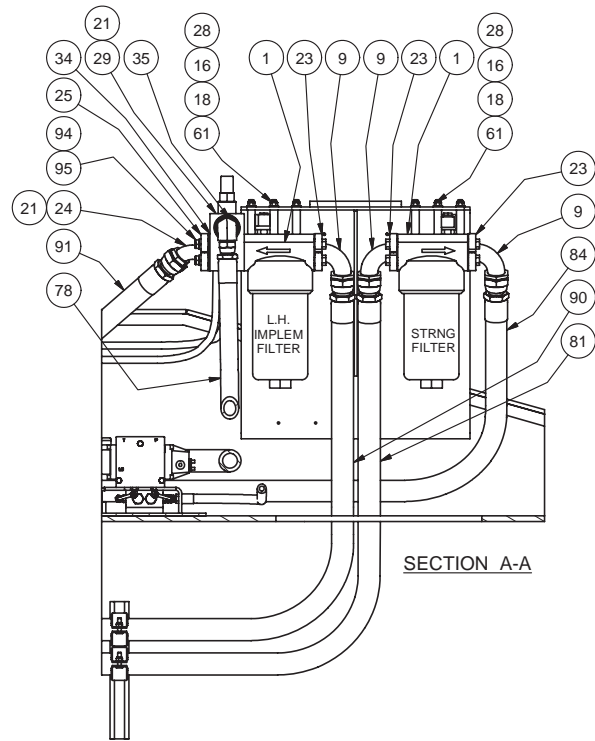

Hydraulic System - Chassis

Hydraulic System - Chassis

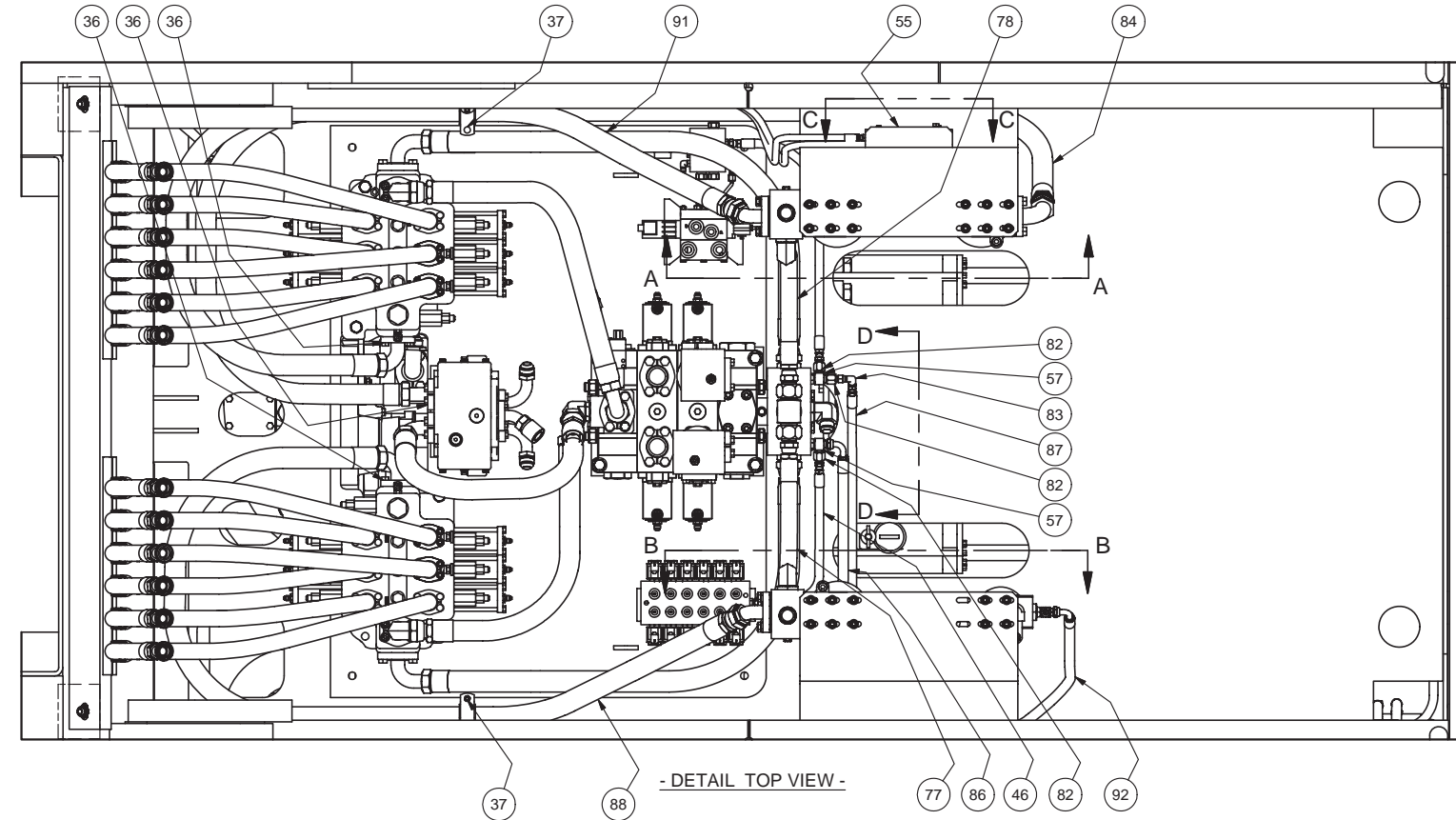
Item	Part No.	Qty	Description	Item	Part No.	Qty	Description
	583218		Hydraulic Sys-Chassis				
1	* 228201	3	. Pressure Filter	28	563204	30	. Spacer
2	253098	4	. Ball Valve	29	572071	2	. Valve Assembly, Relief
3	253420	2	. Fitting	30	563470	1	. Elbow
4	253421	4	. Fitting	33	209714	1	. Fitting
5	209439	1	. Fitting	34	226632	2	. Connector
6	225104	2	. Fitting	35	223783	2	. Fitting
7	209490	5	. Fitting	36	23390	4	. Kit, Split Flange
8	209323	2	. Fitting		200604	4	.. Washer
9	14274	6	. Fitting		201621	4	.. Capscrew
10	209619	1	. Fitting		203523	1	.. O-Ring
11	* 581404	1	. Manifold Assembly		209539	2	.. Clamp Half
12	* 243457	2	. Filter, Insert	37	231248	6	. Clamp
13	209215	4	. Fitting	38	* 228200	3	. Pressure Filter
14	209715	2	. Fitting	39	12666	3	. Fitting
15	216042	16	. T-Bolt Clamp	40	228040	4	. Coupler, Male
16	242368	30	. Stud	41	12786	2	. Fitting
17	201458	3	. Fitting	42	209083	2	. Fitting
18	223427	32	. Flat Washer	43	209488	4	. Fitting
19	243589	1	. Fitting	44	223436	1	. Fitting
20	229164	2	. Ball Valve	45	209067	1	. Fitting
20	228575	4	. 221630W	46	581777	1	. Tube
22	203543	1	. O-Ring	47	581776	1	. Tube
23	11767	9	. Kit, Split Flange	48	581786	1	. Tube Assembly
	200604	4	.. Washer	49	581787	1	. Tube Assembly
	209537	2	.. Clamp Half	50	581853	1	. Tube Assembly
	222379	4	.. Capscrew				
24	14857	3	. Fitting				
26	225128	2	. Fitting				

*a See Separate Coverage

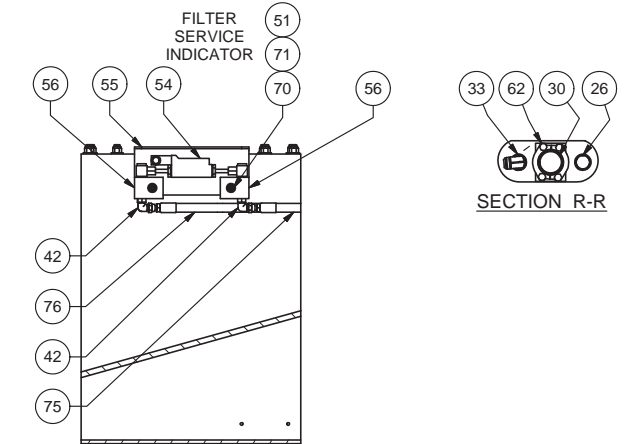
*b Refer to Filter Arrangement 583218FA



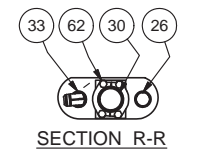
SECTION A-A



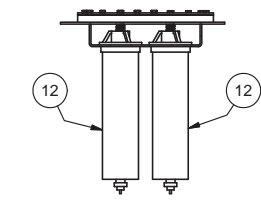
- DETAIL TOP VIEW -



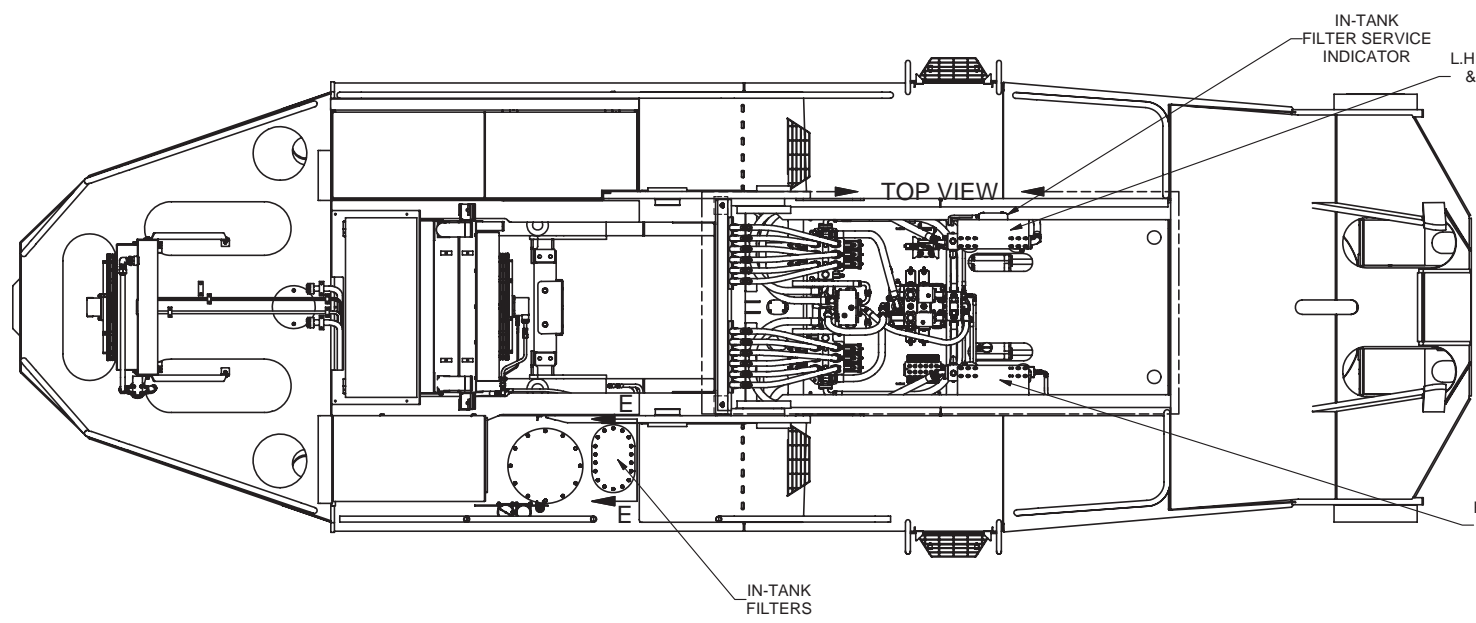
SECTION C-C



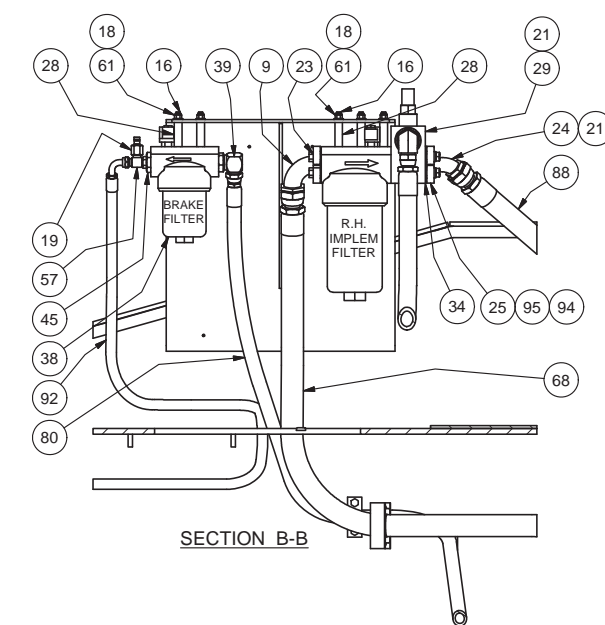
SECTION R-R



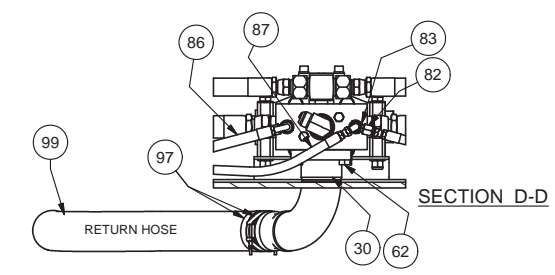
SECTION E-E



TOP VIEW



SECTION B-B



SECTION D-D

