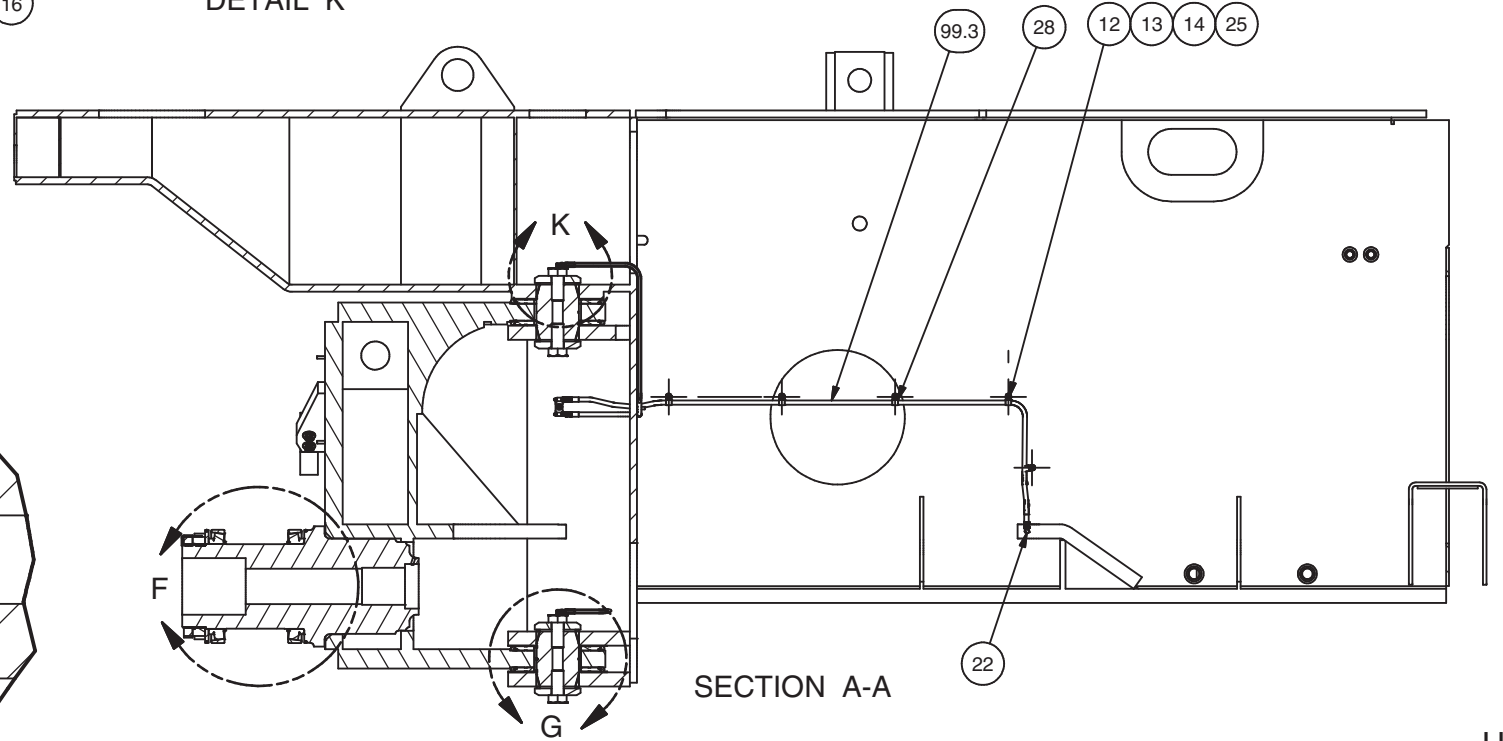
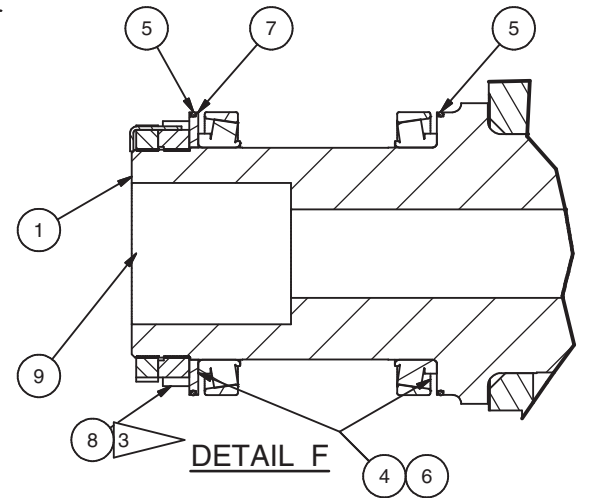
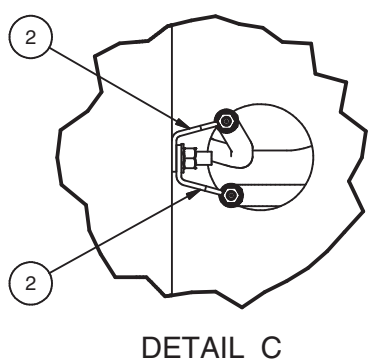
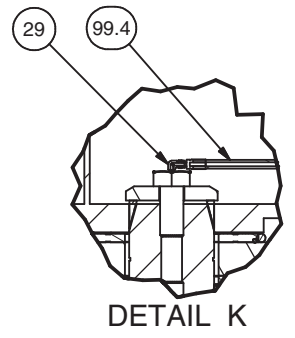
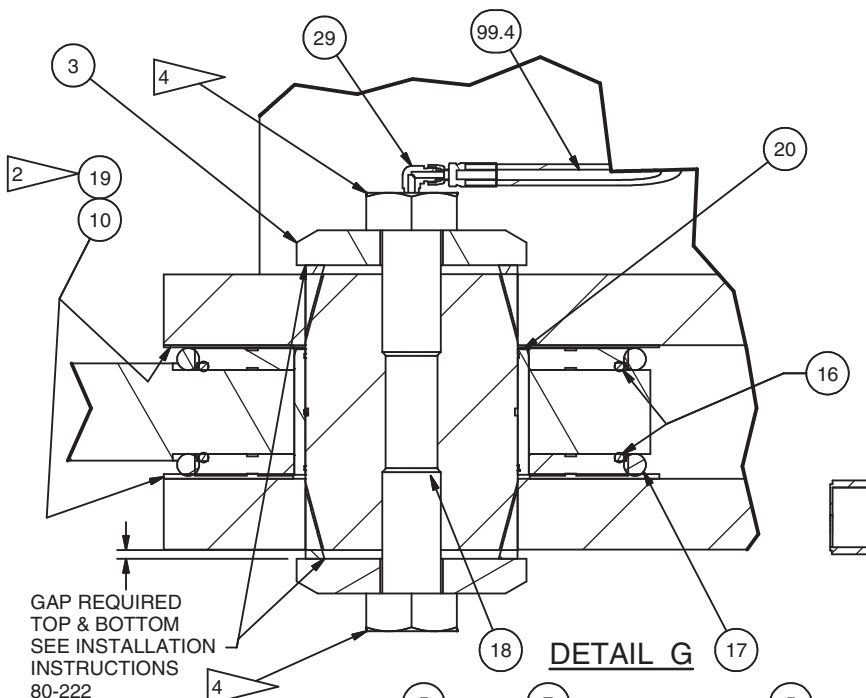
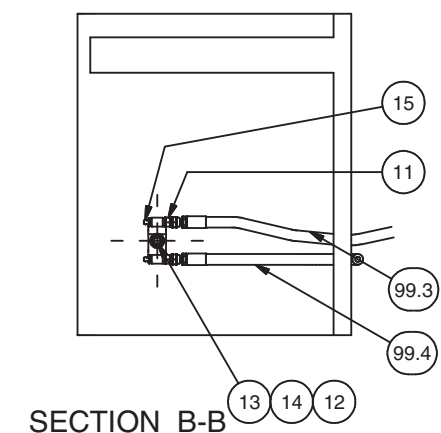
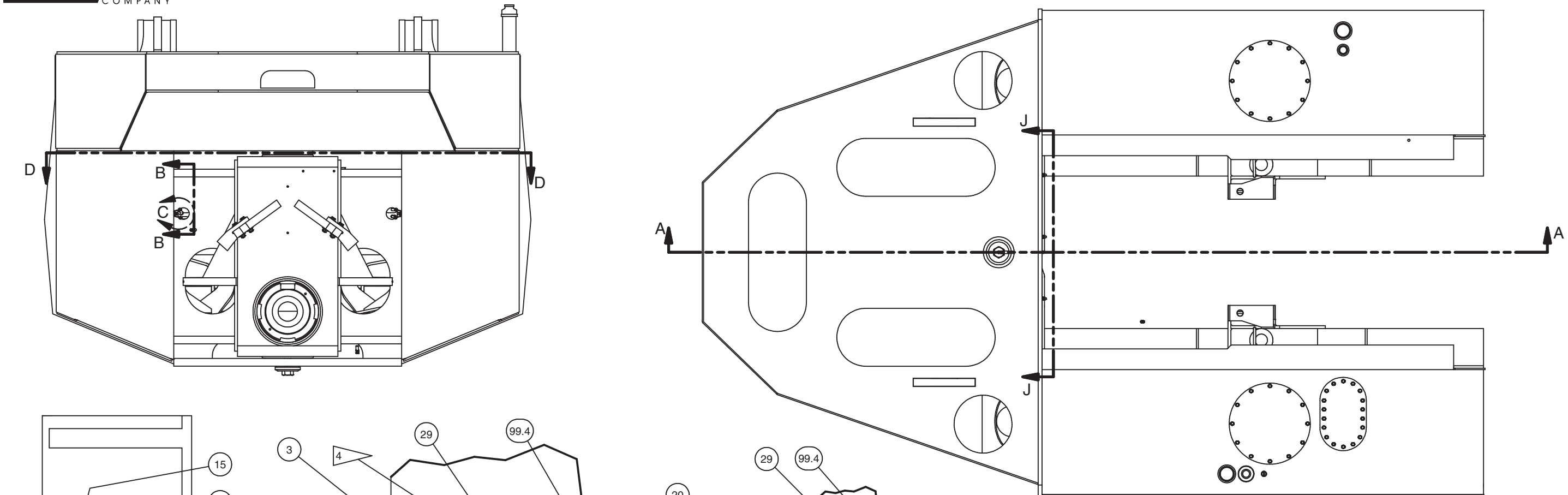


---

Swivel Box Installation

## Swivel Box Installation

Item	Part No.	Qty	Description	Item	Part No.	Qty	Description
<b>581042 Swivel Box Installation</b>							
1	*a 580059	1	. Swivel Box Assembly	18	*b 580156	4	. Washer, Thrust
2	508790	4	. Bracket Assembly	19	564412	2	. Shim
3	*c 581537	2	. Pin ,Pivot	20	*b 563163	2	. Bushing
4	*b 200219	2	. Bearing Cone	21	534398	1	. Plate,Lock
5	*b 203506	2	. O-Ring	22	209405	10	. Fitting
6	*b 204605	2	. Bearing Cup	24	565020	4	. Manifold, Lube
7	501873	1	. Plate,Oil Seal	25	209588	16	. Clip
8	539434	1	. Nut	29	*c 230918	2	. Fitting
9	501874	1	. Nut	99	590462	1	. Kit, Hose
10	564413	2	. Plate, Shim	99.1	214102	1	.. Hose Assembly
11	209750	12	. Fitting	99.2	240429	1	.. Hose Assembly
12	221314	18	. Stud, Weld	99.3	22074	1	.. Hose Assembly
13	223654	18	. Locknut	99.4	208942	1	.. Hose Assembly
14	230282	18	. Flat Washer				
15	00191758	12	. Fitting				
16	*b 203498	4	. O-Ring				
17	*b 550329	4	. Seal, Dirt				
				*a See Separate Coverage			
				*b Included in 586131 Service Kit			
				*c Included in 586141 Expander Pin Kit			



- 2 SHIM WITH P/N 564412 OR 564413 AS REQUIRED SO THAT CLEARANCE DOES NOT EXCEED 1/16". SHIMS ARE TO BE TACK WELDED WHERE NECESSARY.
- 3 TORQUE TO 11500-12000 FT\*LBS
- 4 TORQUE TO 660-670 FT\*LBS.

