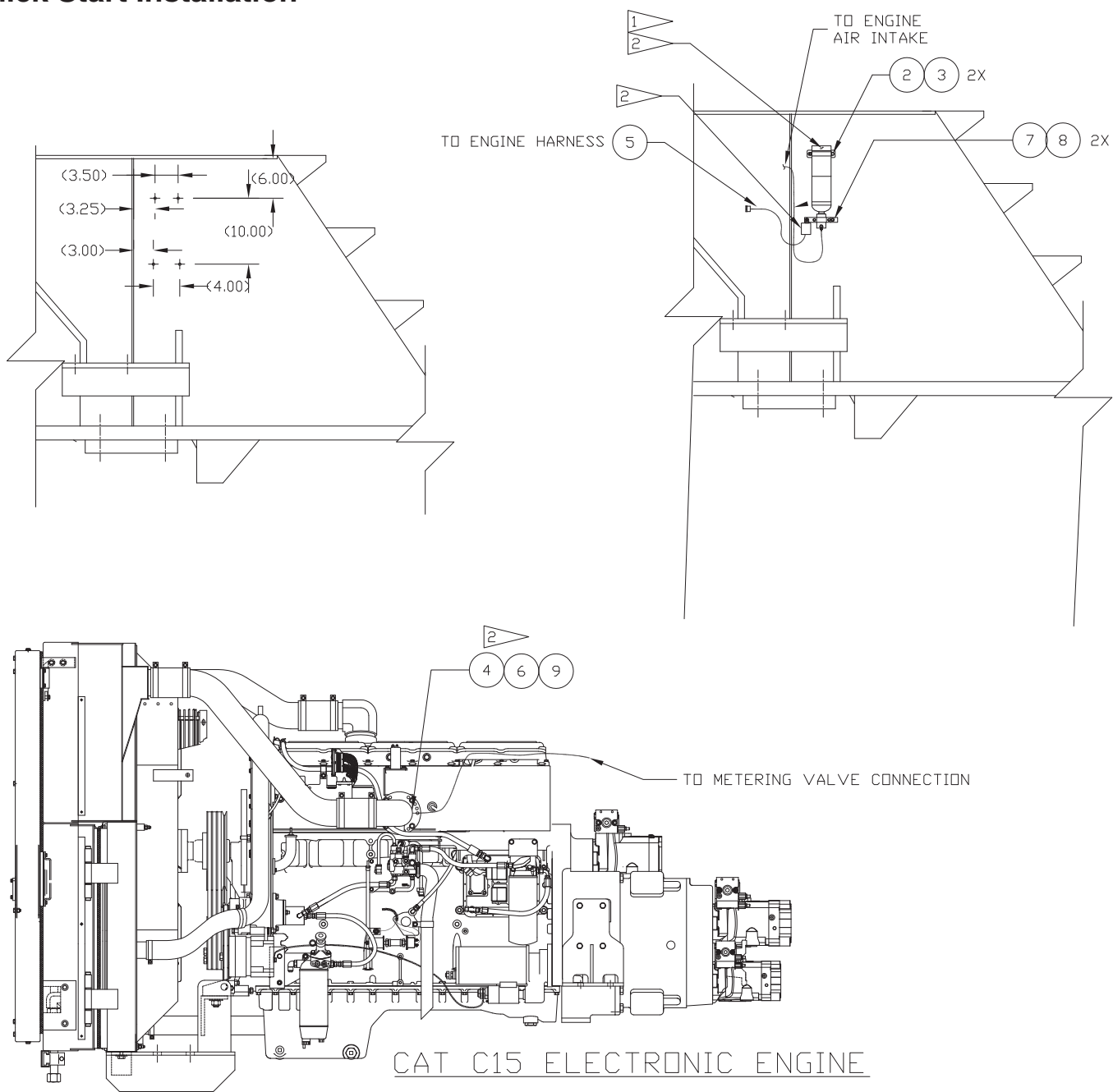


Quick Start Installation



1 MOUNT AS SHOWN AND FOLLOW MANUFACTURERS INTALLATION INSTRUCTIONS WHICH ARE INCLUDED WITH KIT.

2 THE COLD START KIT IS PROVIDED FROM THE SUPPLIER AS PART OF THE ENGINE MODULE. THIS INSTALLATION PROVIDES GUIDANCE ON COMPONENT PLACEMENT AND ADDITIONAL COMPONETS NEEDED FOR THE APPLICATION;

Item	Part No.	Qty	Description	Item	Part No.	Qty	Description
579875 Quick Start Installation							
2	R13811464	2	. Locknut	7	R13811463	2	. Locknut
3	R13802914	2	. Hard Washer	8	221763W	2	. Hard Washer
4	553687	1	. Tube	9	12930015	1	. Fitting
5	579876	1	. Wire Harness				
6	219389	7'	. Loom, Auto				