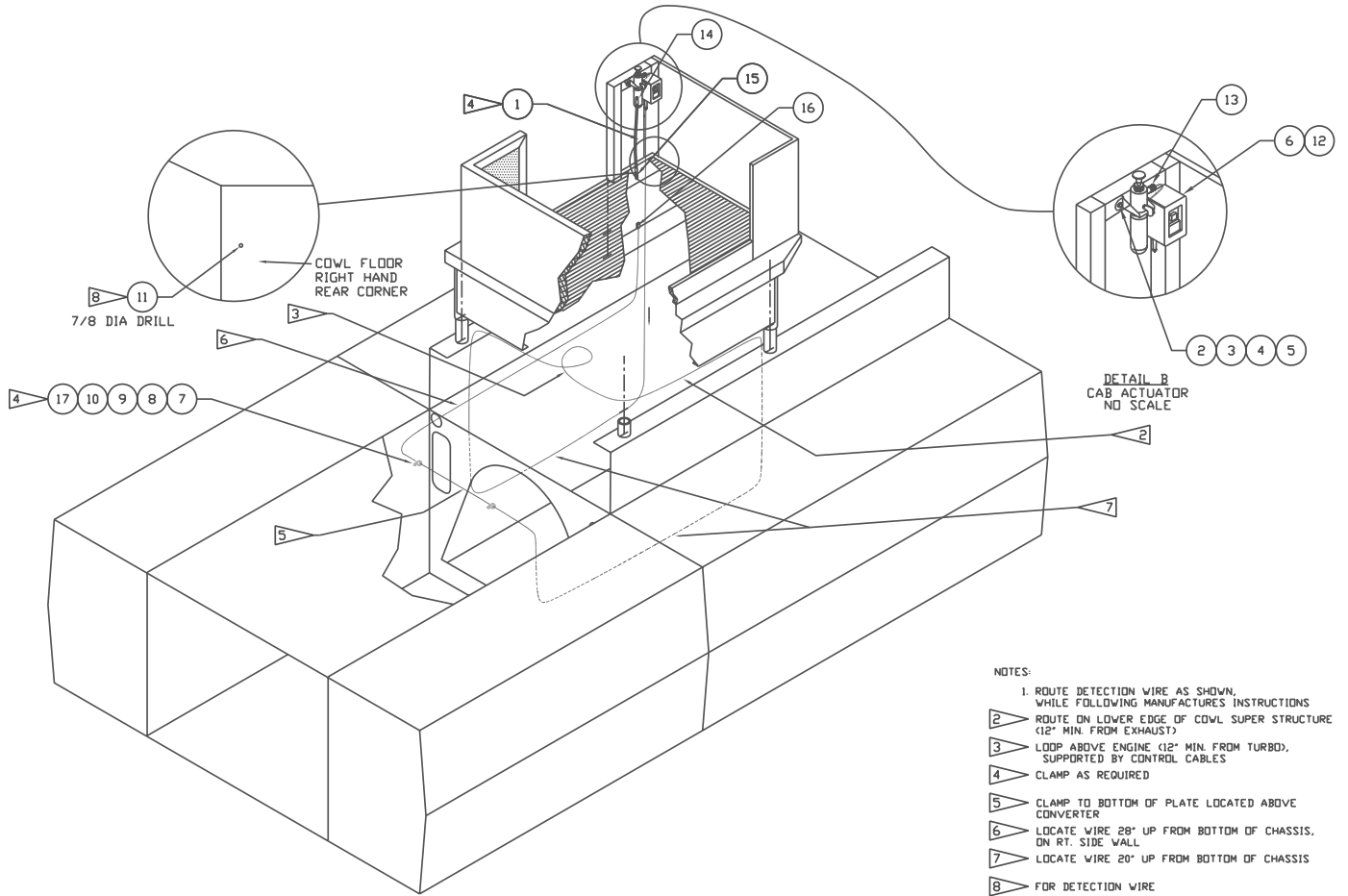


Fire Detection System



| Item | Part No.      | Qty  | Description                  | Item | Part No. | Qty | Description             |
|------|---------------|------|------------------------------|------|----------|-----|-------------------------|
|      | <b>578987</b> |      | <b>Fire Detection System</b> |      |          |     |                         |
| 1    | 230940        | 100' | . Wire, Linear Detection     | 10   | 00103339 | 20  | . Washer                |
| 2    | 240983        | 3    | . Insert                     | 11   | 26040    | 1   | . Connector, Cord       |
| 3    | 230794        | 3    | . Capscrew                   | 12   | 249803   | 1   | . Battery               |
| 4    | 223428        | 3    | . Washer                     | 13   | 237519   | 1   | . Squib                 |
| 5    | 223588        | 3    | . Nut                        | 14   | 217146   | 1   | . Hose Assembly         |
| 6    | 247065        | 1    | . Fire Detection System      | 15   | 219502   | 1   | . Fitting               |
| 7    | 200499        | 20   | . Hose Clamp                 | 16   | 246882   | 1   | . Resistor, End-Of-Line |
| 8    | 222973        | 20   | . Stud                       | 17   | 249329   | 50  | . Cable Tie             |
| 9    | 224209        | 20   | . Nut                        |      |          |     |                         |