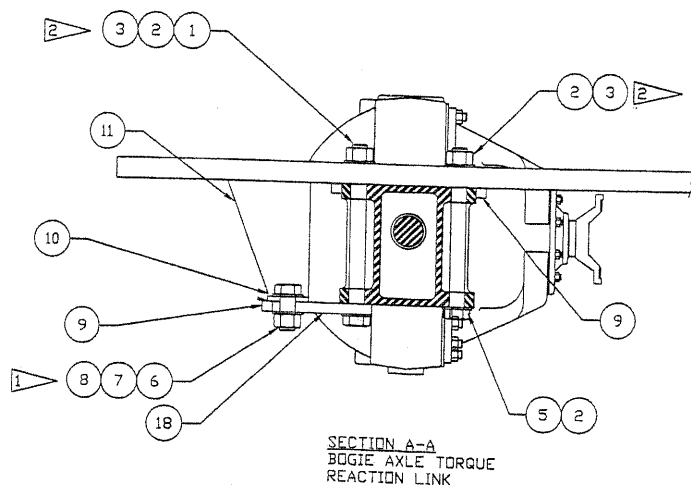
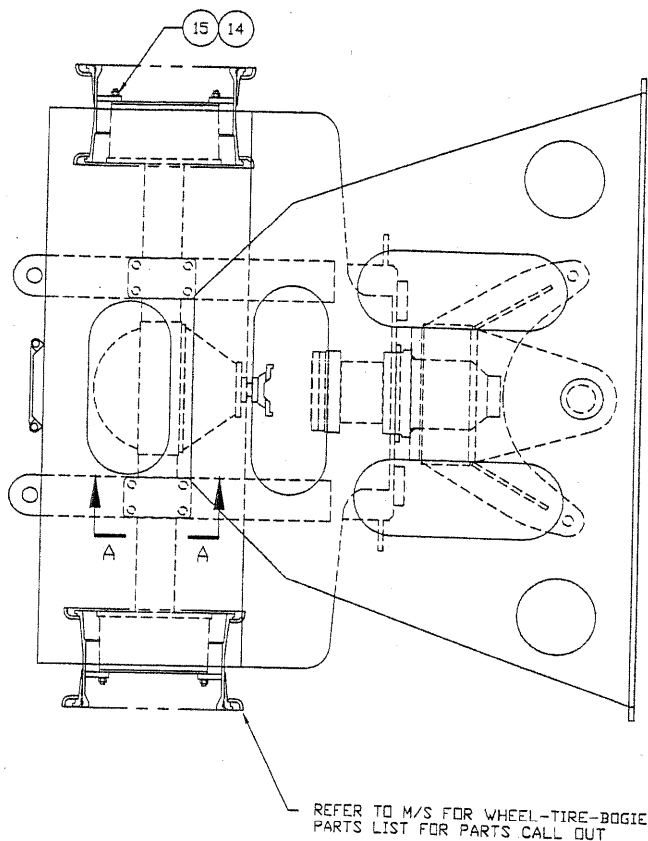


## Rear Axle Installation



## NOTES:

- 1 TORQUE TO 1000 FT/LBS DRY
- 2 TORQUE TO 1500 FT/LBS DRY
- 3 WELD AFTER AXLE AND LINK ARE BOLTED IN PLACE
- 4 WELD AT FINAL ASSY. AFTER ALL ITEMS ARE BOLTED TOGETHER AND IN PLACE.

Item	Part No.	Qty	Description	Item	Part No.	Qty	Description
	575920		<b>Rear Axle Installation</b>				
1	242691	4	. Capscrew	10	562389	2	. Plate, Torque Bar
2	224215	16	. Washer, Hard	11	575919	2	. Gusset
3	220448	8	. Nut, Esna	12	* 242417	1	. Axle Assembly
5	242690	4	. Capscrew	14	217768	54	. Nut, Hex
6	224181	4	. Capscrew	15	204882	54	. Washer
7	220918	4	. Nut, Esna	18	556708	2	. Link
8	217419	8	. Washer, Hard				
9	556710	6	. Stop, Axle				

\* See Separate Coverage