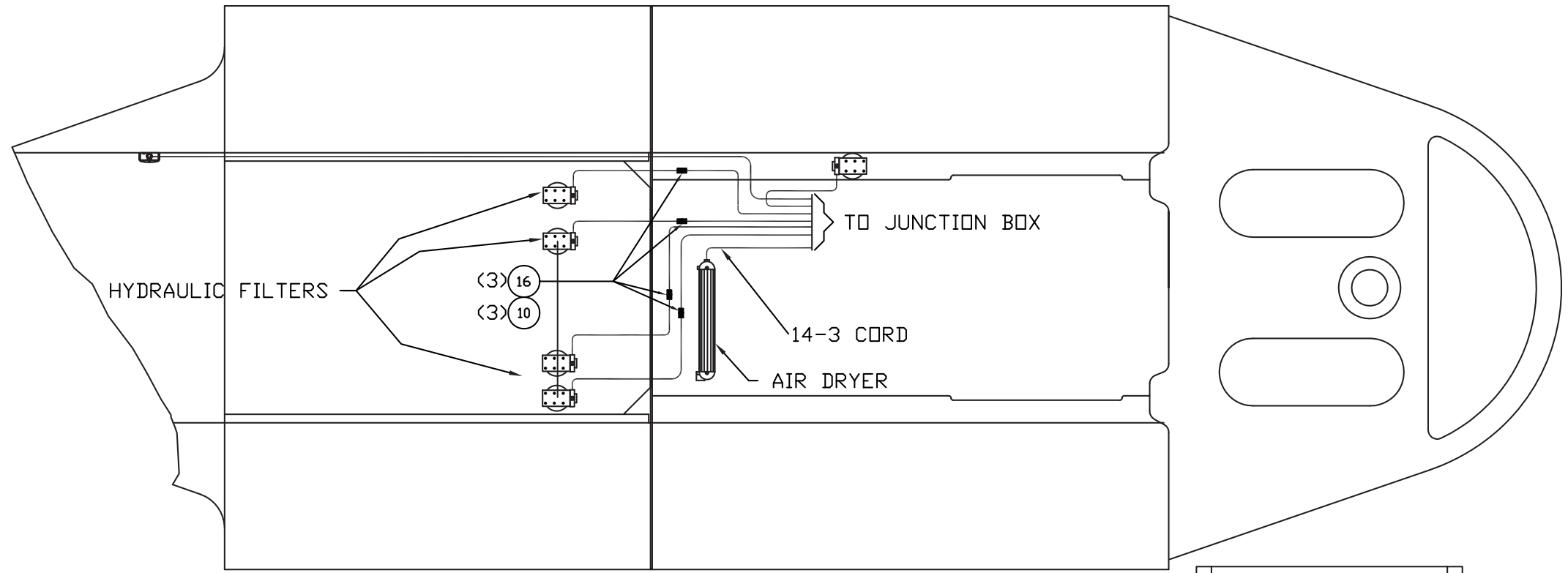


---

Chassis Wiring

## Chassis Wiring

Item	Part No.	Qty	Description	Item	Part No.	Qty	Description
	<b>572174</b>		<b>Wiring,Chassis</b>				
1	200220	2	. Battery	11	221966	1	. Terminal
2	224299	1	. Switch, Master Disconnect	12	200248	6	. Terminal Ring
3	571689	1	. Battery Harness, Ground	13	221181	5	. Boot,Rubber
4	526544	1	. Wire Assembly, Ground	14	223872	20	. Tie Strap
5	526535	1	. Wire Assembly	15	200499	14	. Hose Clamp
6	560516	1	. Bracket	16	221963	9	. Terminal
8	219386	60'	. Wire	17	557276	1	. Bracket
9	230729	1	. Sending Unit	19	200247	1	. Terminal Ring
10	221964	9	. Terminal	20	219410	20'	. Wire



**FUEL SENDER - POTENTIOMETER ADJUSTMENT**

1. WHILE UNIT IS OUT OF TANK, TURN BOTH POTENTIOMETERS ON UNIT FULLY CLOCKWISE.
2. TURN IGNITION ON. FUEL GAUGE SHOULD READ FULL.
3. RETARD "E" POTENTIOMETER UNTIL FUEL GAUGE READS "EMPTY".
4. INSERT SENDER INTO TANK AND RETARD "F" POTENTIOMETER UNTIL FUEL GAUGE READS "FULL".

