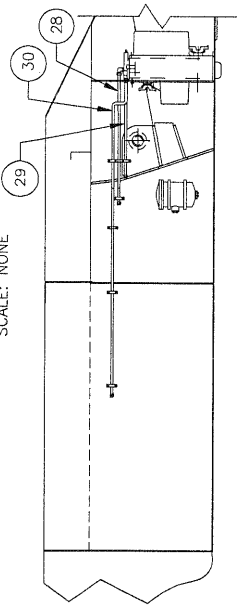
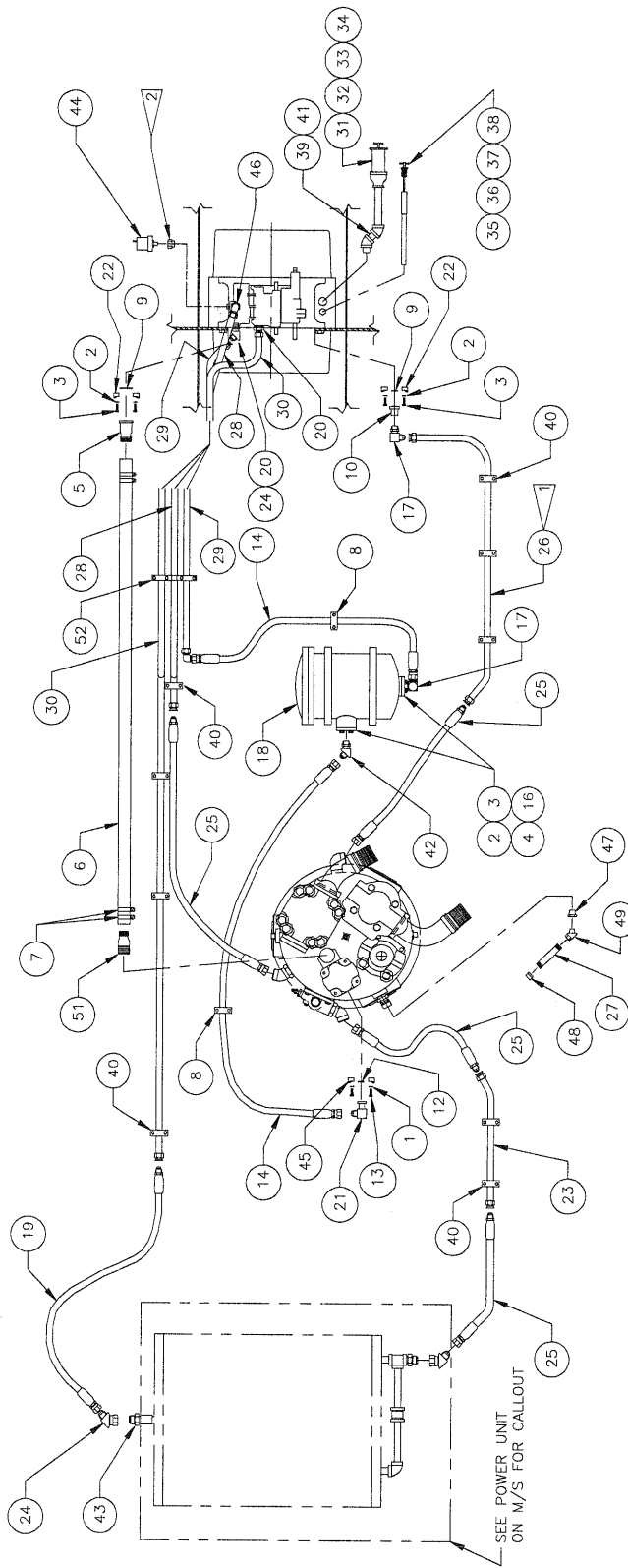
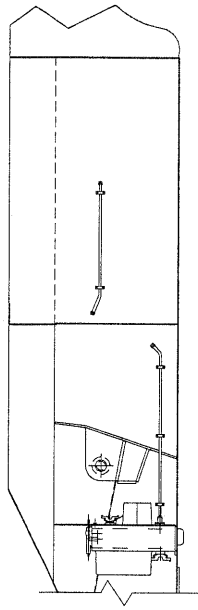


Transmission Circuit

CHASSIS INTERIOR, L.H. SIDE  
SCALE: NONE



CHASSIS INTERIOR, R.H. SIDE  
SCALE: NONE



1 CONVERTER DRAIN LINE MUST BE ATTACHED TO THE LOWEST CONVERTER DRAIN PORT AND HAVE A CONTINUING SLOPE TO THE TRANSMISSION.

2 DRILL & TAP 1/8" NTP IN EXISTING PLUG FOR OIL SENDER UNIT.

FOR UNITS USING STD. HOSE WITH CUMMINS NTA 855.335C ENGINE, CLARK 5000 TRANSMISSION, & 8000 CONVERTER WITH OUT LOCK UP.

## Transmission Circuit

Item	Part No.	Qty	Description	Item	Part No.	Qty	Description
	<b>571738</b>		<b>Transmission Circuit</b>				
1	201567	4	. Washer, Lock	29	571847	1	. Tube Assembly
2	200604	16	. Washer, Lock	30	571848	1	. Tube Assembly
3	222379	16	. Capscrew	31	208202	1	. Cap, Fuel
4	203519	2	. O-Ring	32	521873	1	. Pipe
5	234007	1	. Fitting	33	00454045	1	. Coupling, Red
6	201439	6	. Hose, Suction	34	225024	1	. Fitting
7	206289	4	. Clamp, Hose	35	572096	1	. Dipstick Assembly
8	225259	2	. Clamp	36	-----	Ref	Bell (comes W/trans)
9	203516	2	. O-Ring	37	229257	1	. Fitting
10	506618	1	. Flange	38	563665	1	. Nipple, pipe
12	203443	1	. O-Ring	39	00119096	2	. Elbow, Pipe
13	202201	4	. Capscrew	40	559208	9	. Clamp Wldmt
14	223864	2	. Hose Assembly	41	00127874	2	. Nipple, Pipe
16	513759	2	. Flange Rework	42	209167	1	. Fitting
17	209714	2	. Fitting	43	225025	1	. Fitting
18	* 219271	1	. Filter	44	242496	1	. Sender, Oil Pressure
19	226330	1	. Hose Assembly	45	209535	2	. Fitting
20	210011	1	. Fitting	46	221140	1	. Fitting
21	28574	1	. Fitting	47	209510	1	. Fitting
22	209537	4	. Fitting	48	212243	1	. Breather
23	564942	1	. Tube Assembly	49	214171	1	. Fitting
24	209111	1	. Fitting	51	230466	1	. Fitting
25	219281	4	. Hose Assembly	52	571844	1	. Clamp Wldmt
26	567147	1	. Tube Assembly				
27	225023	1	. Fitting				
28	571846	1	. Tube Assembly				

\* See Separate Coverage