

## Jack Locations

Carefully follow these instructions and warnings to help prevent personal injury or damage to your Landfill Compactor:

1. Park on firm level surface and lower the blade to the ground.
2. Engage parking brake and remove key from key switch. Tag key switch "DO NOT START" and follow your company's Lockout Procedure to ensure that the engine is not inadvertently started.
3. Block wheel on opposite side of wheel to be raised.
4. Use jack(s) in location(s) illustrated (See Figure 5-6-1). Use pads (anti slip material) that are minimum 4" x 4" in size between jack and Compactor to prevent damage.

### REAR

Use two jacks when raising rear of Compactor. Each jack should be capable of lifting at least 45,000 lbs (20,412 kg). Use one on each side.

### FRONT

Use two jacks when raising front of Compactor. Each jack should be capable of lifting at least 45,000 lbs (20,412 kg).

5. Place jack stand(s) as required. The jack stand(s) must be capable of holding entire weight of machine, approximately 90,000 lbs (40,823 kg). Use pads (anti slip material) that are minimum 4" x 4" in size between jack stand(s) and Compactor to prevent damage.



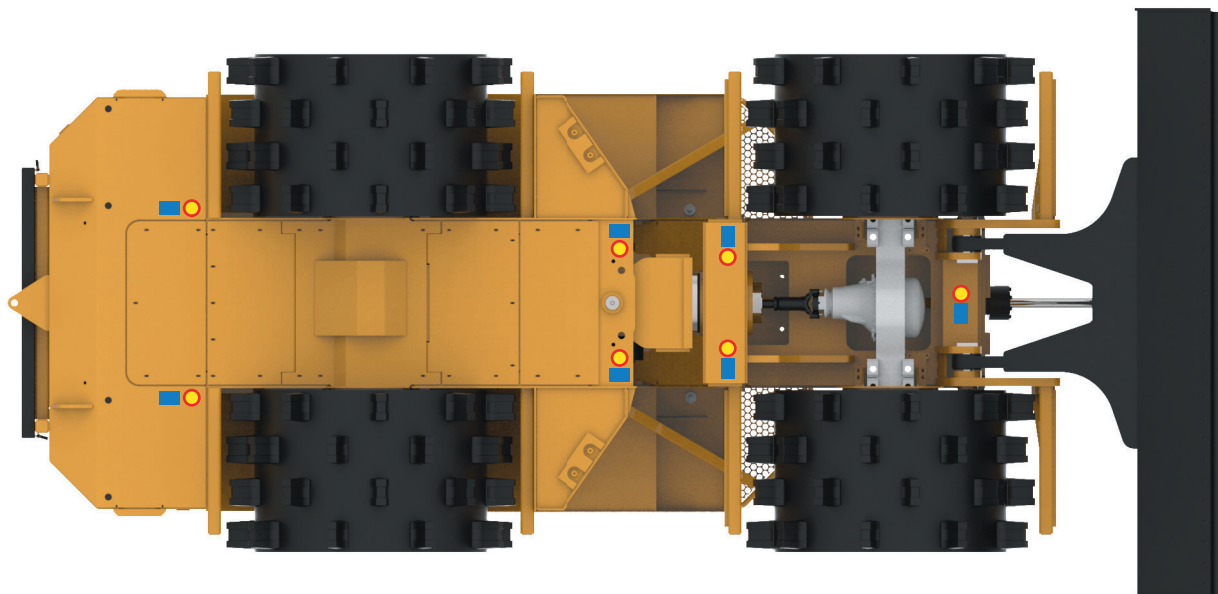
## WARNING

**Never rely on a jack or any lifting device to hold the weight of the Compactor. Always use jack stands capable of holding the entire weight of the machine.**



## WARNING

**Do not let any person on or under the Compactor while the machine is on a jack or any lifting device. Please call Allied Systems service department with any questions (503-625-2560).**



■ Jack Stand Placement

● Jack Placement

Figure 5-6-1 Jacking Locations

---

**INTENTIONALLY LEFT BLANK**