

Safety Controls

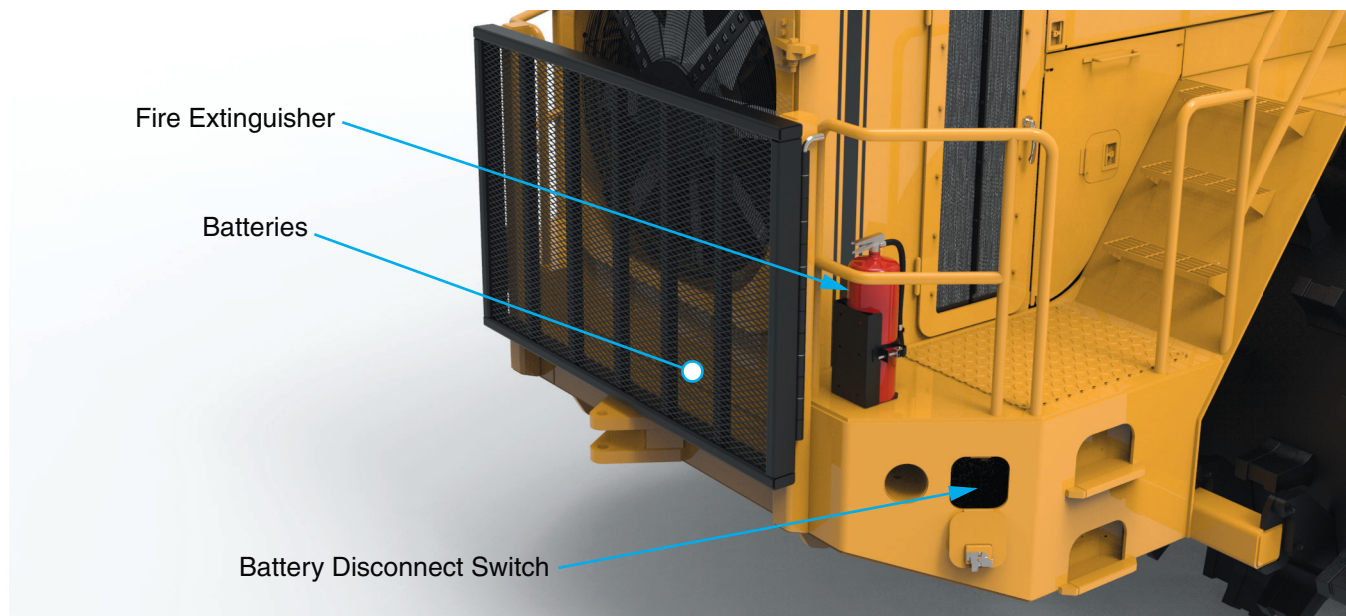


Figure 2-8-1 Safety Controls

Fire Extinguisher (hand held)

Mounted on the right side of the chassis, just behind the boarding stairs (see Figure 2-8-2). Follow operating instructions located on the fire extinguisher.

In Case Of Fire

1. Activate your optional fire suppression system (if installed; consult the documentation for your system for details).
2. Call the Fire Department and/or service personnel as soon as possible. After the system has discharged, watch carefully for flare ups and spot fires while maintaining a safe distance.
3. Stay clear of the vehicle until it has cooled completely.



WARNING

After a fire, hydraulic and coolant hoses are an extreme hazard.

Stay away from the machine until it has cooled completely.

The hoses containing these very hot, pressurized fluids may have been damaged by the fire and could burst at any time, causing serious burns or other injuries.



Figure 2-8-2 Fire Extinguisher

Battery Disconnect Switch

The battery disconnect switch (see Figure 2-8-3) is mounted on the right hand side of the machine, accessed behind a guard door. See Figure 2-8-1.

This switch isolates the batteries from the electrical circuits and should be set to “off” when the machine is not in use, or during maintenance and repair, to prevent unauthorized starting or electrical shorts. Turn the switch counterclockwise to disconnect the battery. Follow your company’s lock out procedure.

NOTE: Allow 30 seconds between ignition key off and battery disconnect off events to avoid erroneous ECM fault code on electronic engines.



CAUTION

Equipment damage hazard.

Welding anywhere on the machine could damage the electrical system.

Set the Battery Disconnect Switch to OFF before welding.

In some cases, this switch will automatically switch off when the Fire Suppression System is activated.

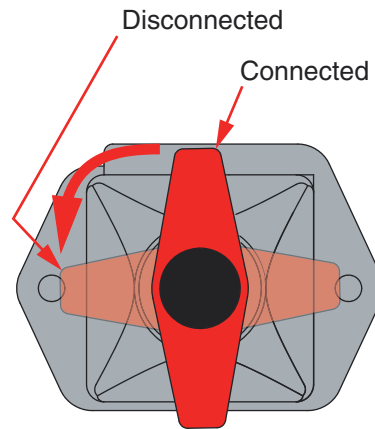


Figure 2-8-3 Battery Disconnect Switch