

Machine Identification and Terminology

Machine Identification

The model and serial number of your vehicle provide Allied Systems Company and your maintenance department with a way to keep a record of each machine. Each Wagner Landfill Compactor has the serial number stamped into the chassis, on the left side of the machine in the front. See Figure 1-3-1.

Additionally, the nameplate, mounted just under the ROPS installation on the right walkway, provides the model and serial number of your vehicle. See Figure 1-3-2.

NOTE: The serial number stamp or nameplate location may vary on your machine. The nameplate location shown in Figure 1-3-2 is typical.

NOTE: The importance of the machine's model and serial number cannot be overstated. Always have these numbers at your fingertips when requesting parts, service, or operation information of any kind. It is from these numbers that our service department creates a unit file in which a complete history of your machine is maintained.

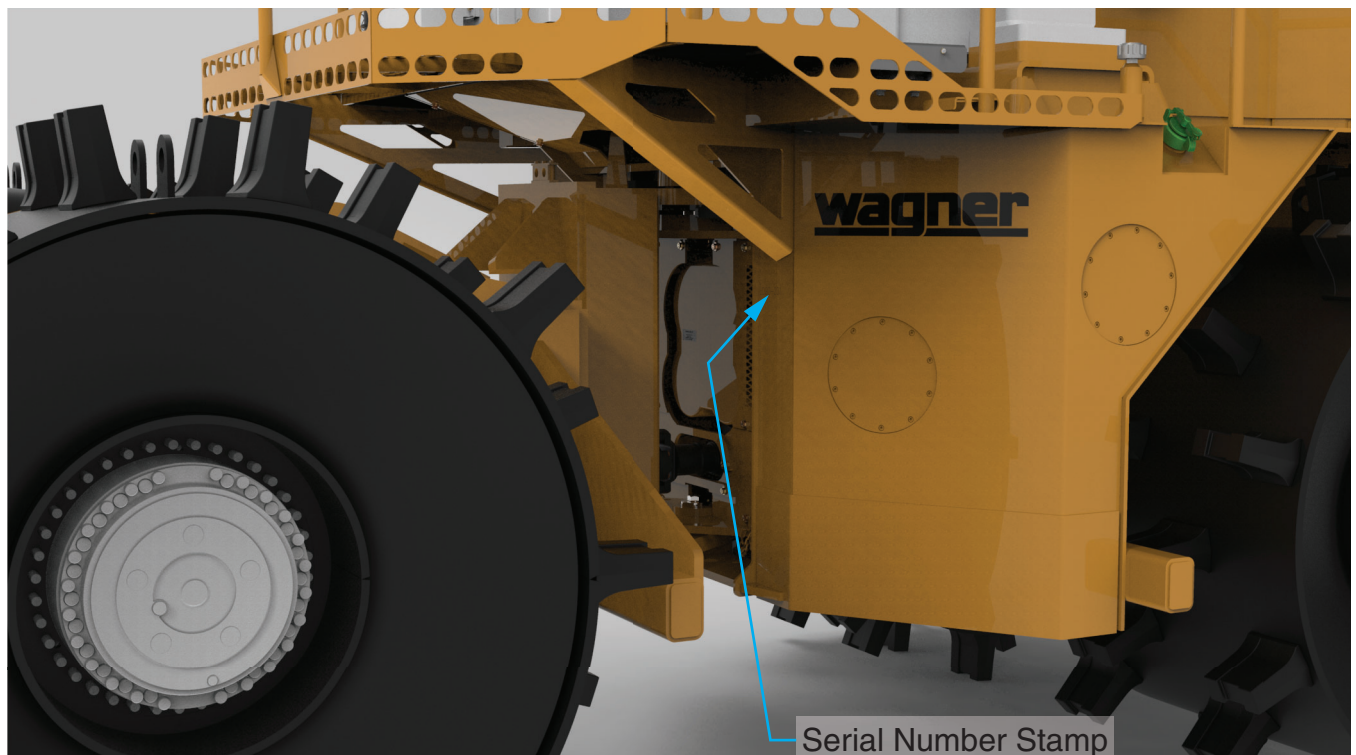


Figure 1-3-1 Serial Number Stamp Location (Typical...your machine may vary)

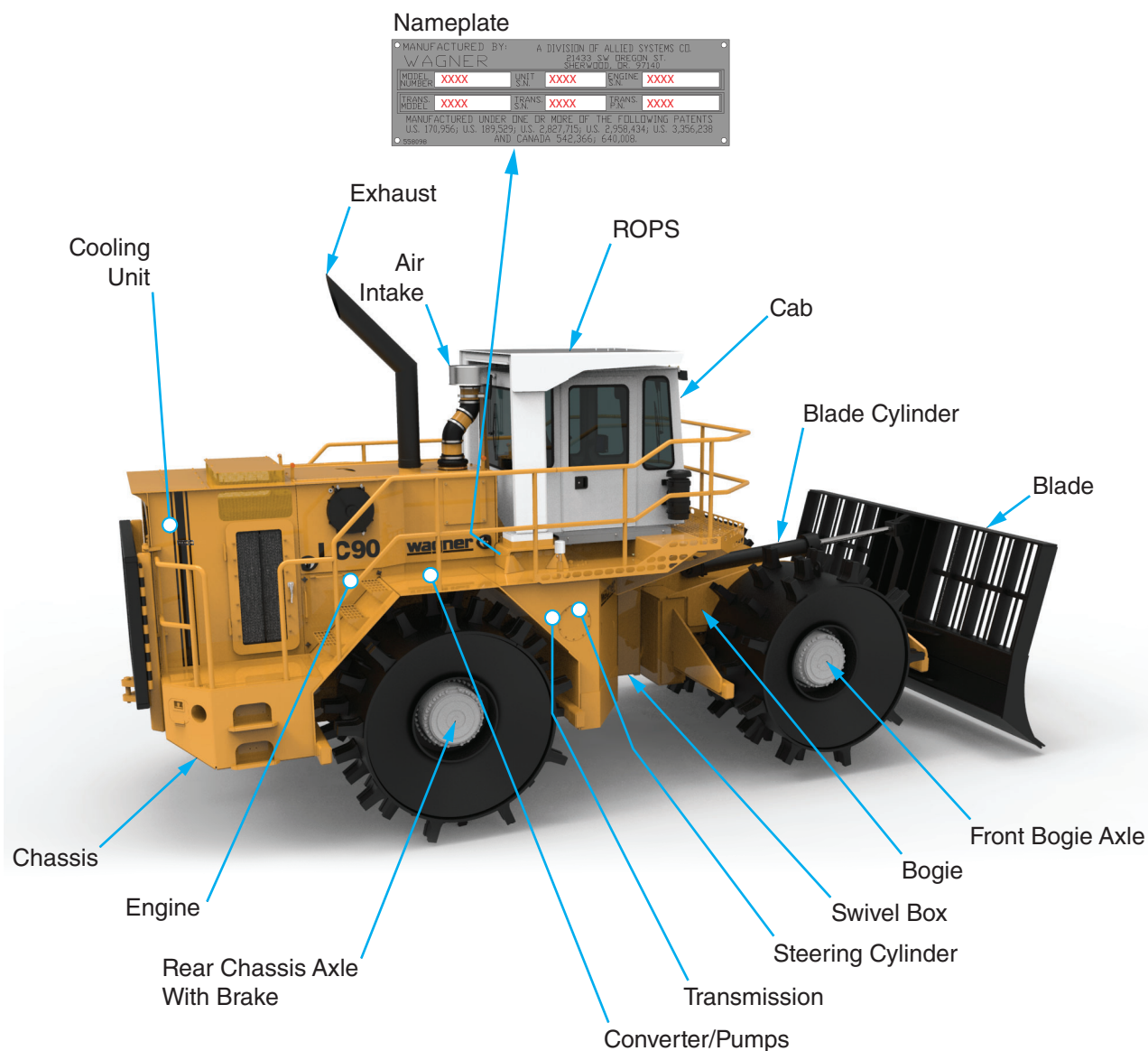


Figure 1-3-2 Terminology (Model LC90 Shown for Reference)

Terminology

Refer to Figure 1-3-2 for terminology of components of your Wagner Landfill Compactor. Understanding and using this terminology when discussing your machine with your dealer, or with Allied Systems Company, will reduce confusion.

Additionally, many of these terms are used throughout this manual. Refer to Figure 1-3-2 for reference.