

## Jack Locations

Carefully follow these instructions and warnings to help prevent personal injury or damage to your Carrydozer:

1. Park on firm level surface and lower the empty bucket to ground.
2. Engage parking brake and remove key from key switch. Tag key switch "DO NOT START" and follow your company's Lockout Procedure to ensure that the engine is not inadvertently started.
3. Block wheel on opposite side of wheel to be raised.
4. Use jack(s) in location(s) illustrated (See Figure 5-6-1). Use pads (anti slip material) that are minimum 4" x 4" in size between jack and Dozer to prevent damage.

### REAR

Use two jacks when raising rear of Dozer. Each jack should be capable of lifting at least 50,000 lbs (22,679 kg). Use one on each side.

### FRONT

The H-Frame must be removed first before removing front tires.

1. Remove hydraulic and lube lines from H-Frame.
2. Disconnect dump cylinder from H-Frame.
3. Remove H-Frame.

Use two jacks when raising front of Dozer. Each jack should be capable of lifting at least 50,000 lbs (22,679 kg).

5. Place jack stand(s) as required. The jack stand(s) must be capable of holding entire weight of machine. Use pads (anti slip material) that are minimum 4" x 4" in size between jack stand(s) and Dozer to prevent damage.



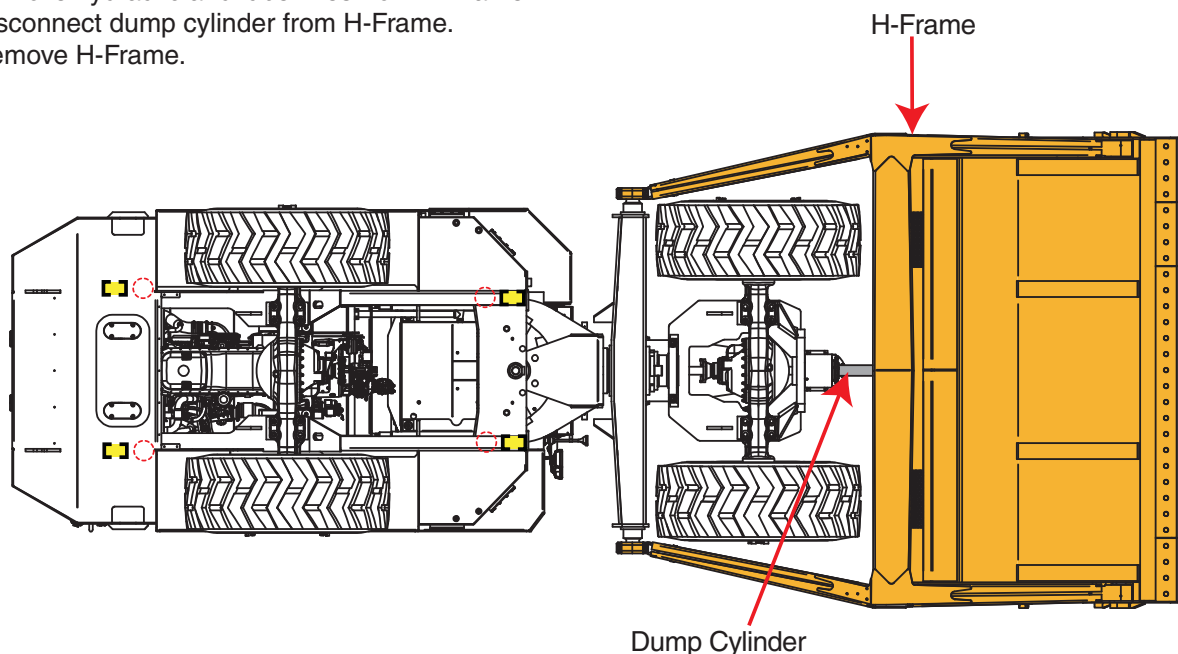
## WARNING

**Never rely on a jack or any lifting device to hold the weight of the Dozer. Always use jack stands capable of holding the entire weight of the machine.**



## WARNING

**Do not let any person on or under the Dozer while the machine is on a jack or any lifting device. Please call Allied Systems service department with any questions (503-625-2560).**



 Jack Placement

 Jack Stand Placement

Figure 5-6-1 Jacking Locations

---

**INTENTIONALLY LEFT BLANK**