

Machine Identification and Terminology

Machine Identification

The model and serial number of your vehicle provide Allied Systems Company and your maintenance department with a way to keep a record of each machine. Each Carrydozer has the serial number stamped into the chassis, on the left side of the machine in the front. See Figure 1-3-1.

Additionally, the nameplate, mounted on the side of the machine, provides the model and serial number of your vehicle. See Figure 1-3-2.

NOTE: The Serial Number stamp or nameplate location may vary on your machine. The nameplate location shown in Figure 1-3-2 is typical.

NOTE: The importance of the machine's model and serial number cannot be overstated. Always have these numbers at your fingertips when requesting parts, service, or operation information of any kind. It is from these numbers that our service department creates a unit file in which a complete history of your machine is maintained.

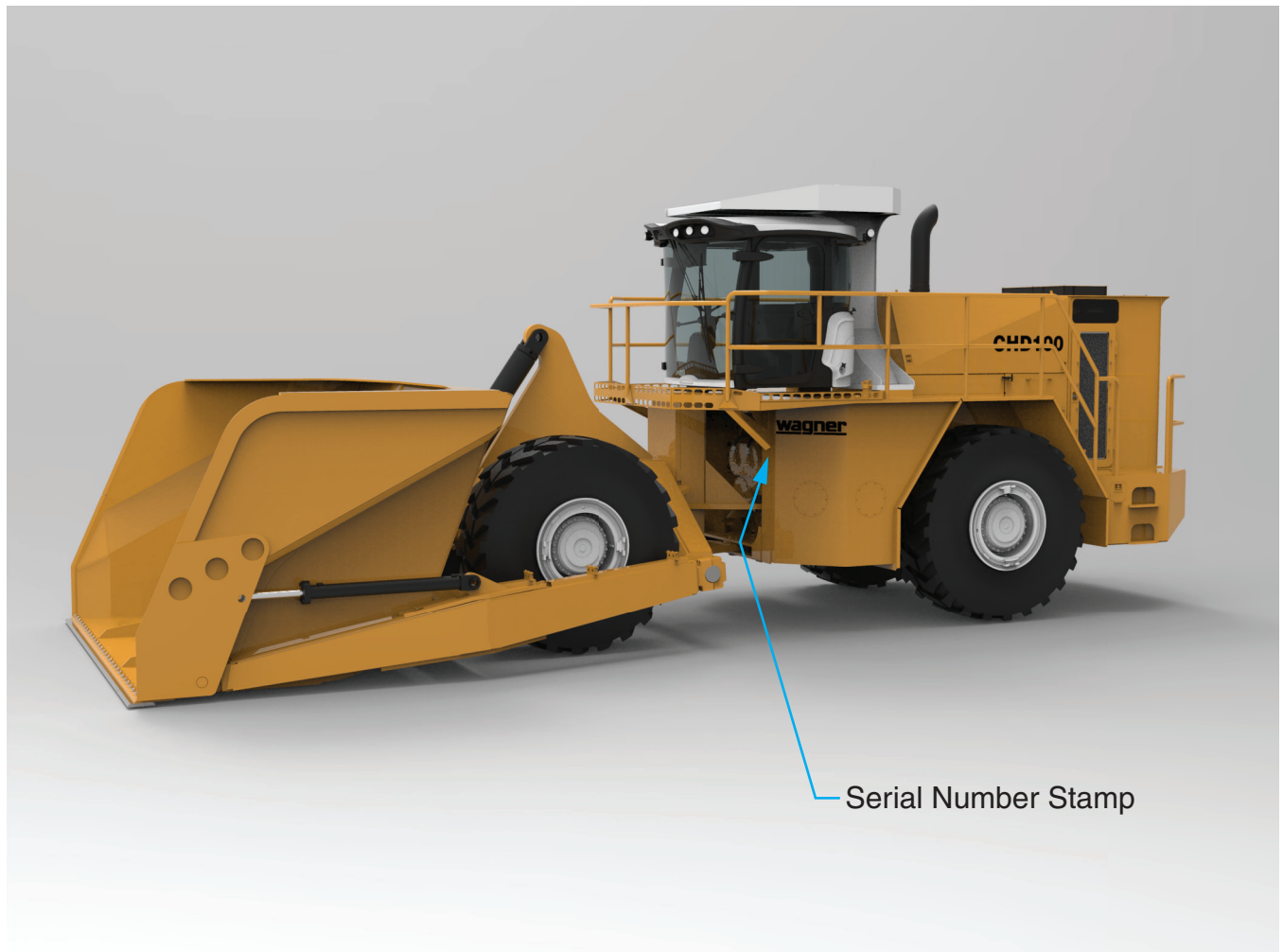


Figure 1-3-1 Serial Number Stamp Location (Typical...your machine may vary)

Nameplate

MANUFACTURED BY: A DIVISION OF ALLIED SYSTEMS CO.			
WAGNER 21433 SW OREGON ST. SEASIDE, OR 97138			
MODEL NUMBER	UNIT S/N	ENGINE S/N	XXXX
TRANS. MODEL	TRANS. S/N	TRANS. S/N	XXXX
MANUFACTURED UNDER ONE OR MORE OF THE FOLLOWING PATENTS U.S. 170,956; U.S. 189,529; U.S. 2,827,715; U.S. 2,958,434; U.S. 3,356,238 AND CANADA 542,366; 640,008.			

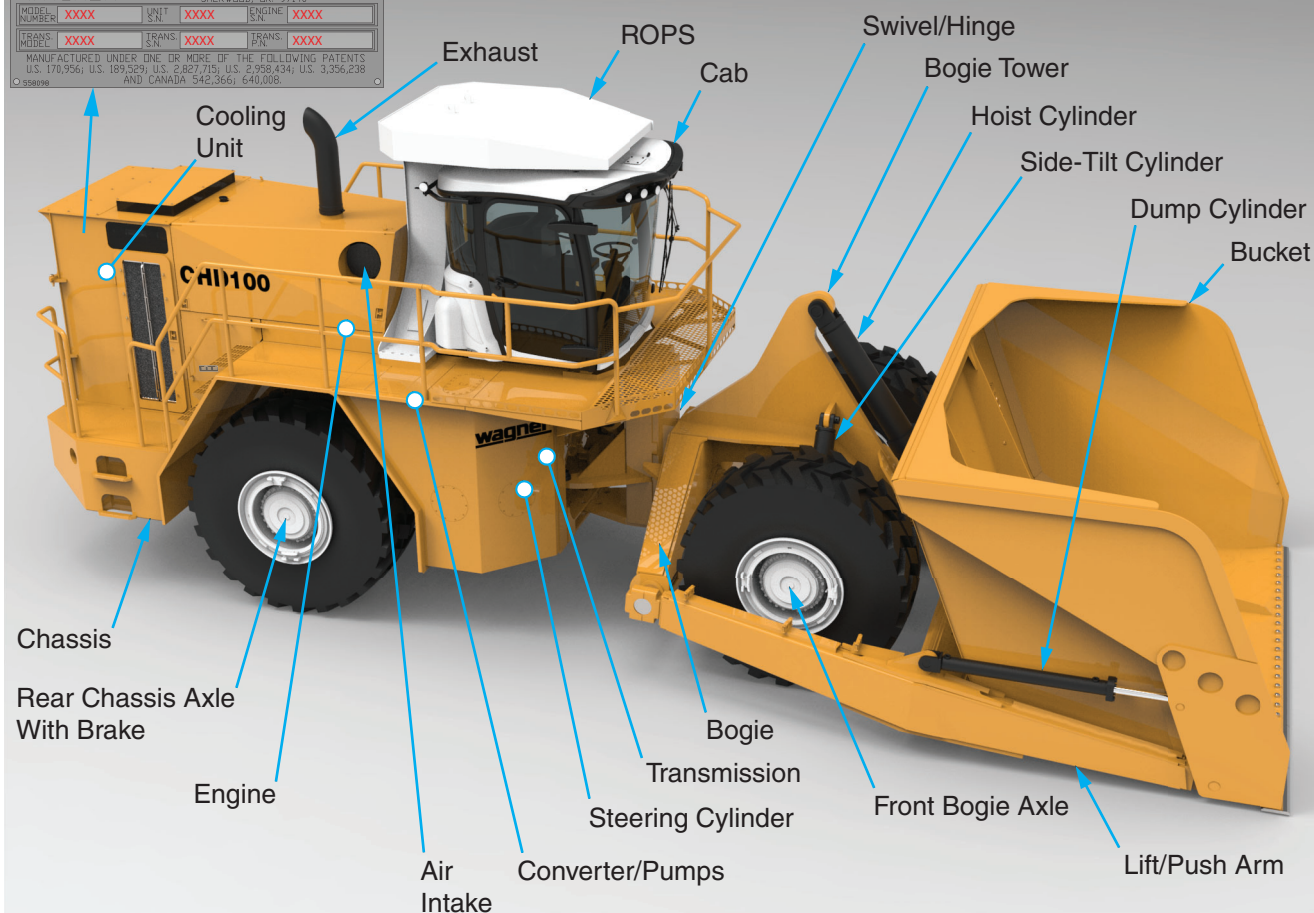


Figure 1-3-2 Terminology (Model CHD100 Shown for Reference)

Terminology

Refer to Figure 1-3-2 for terminology of components of your Carrydozer. Understanding and using this terminology when discussing your machine with your dealer, or with Allied Systems, will reduce confusion.

Additionally, many of these terms are used throughout this manual. Refer to Figure 1-3-2 for reference.