

Machine Identification and Terminology

Machine Identification

The model and serial number of your vehicle provide Allied Systems Company and your maintenance department with a way to keep a record of each machine. Each Carrydozer has the S.N. stamped into the chassis, on the left side of the machine in the front. Additionally, the nameplate, mounted inside the cab, provides the model and serial number of your vehicle. See Figure 1-3-1.

NOTE: The Serial Number stamp or nameplate location may vary on your machine. The nameplate location shown in Figure 1-3-1 is typical. The nameplate may also be located outside the cab.

NOTE: The importance of the machine's model and serial number cannot be overstated. Always have these numbers at your fingertips when requesting parts, service, or operation information of any kind. It is from these numbers that our service department creates a unit file in which a complete history of your machine is maintained.

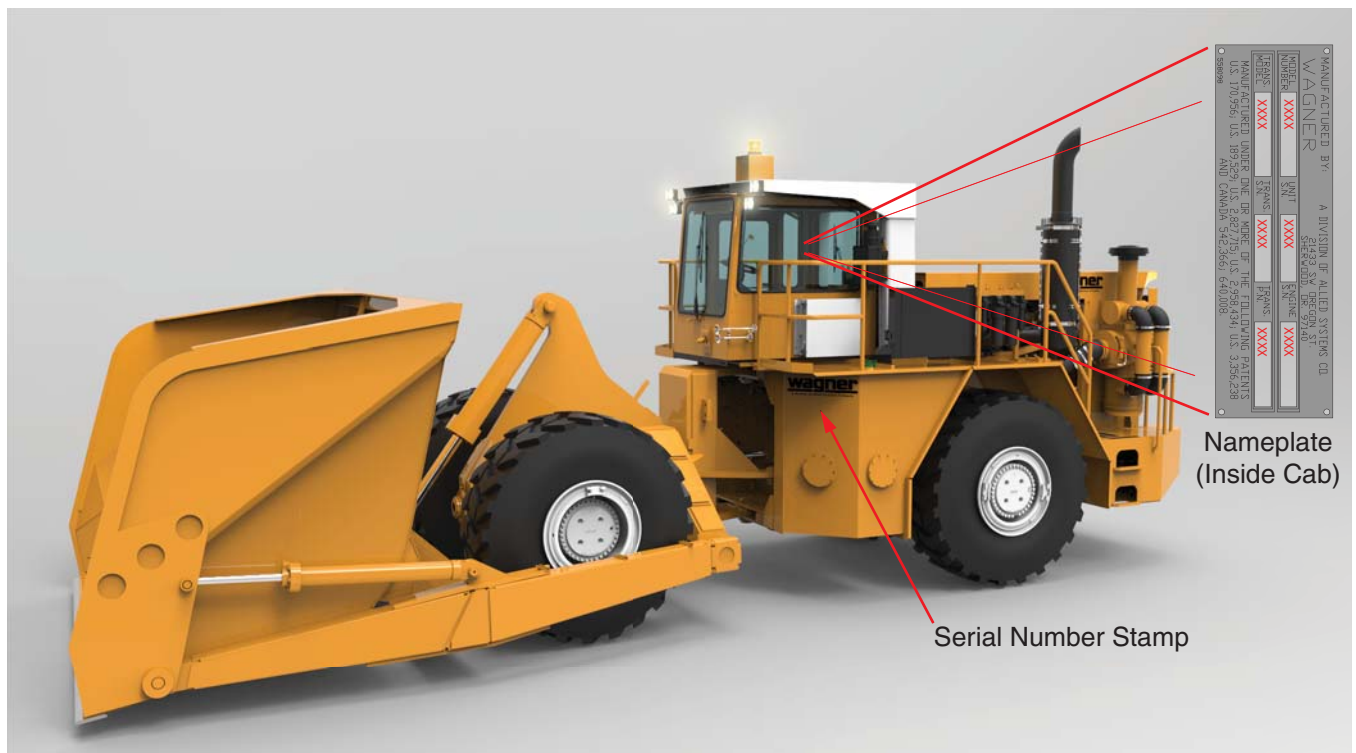


Figure 1-3-1 Nameplate and Serial Number Stamp Locations (Typical...your installation may vary)

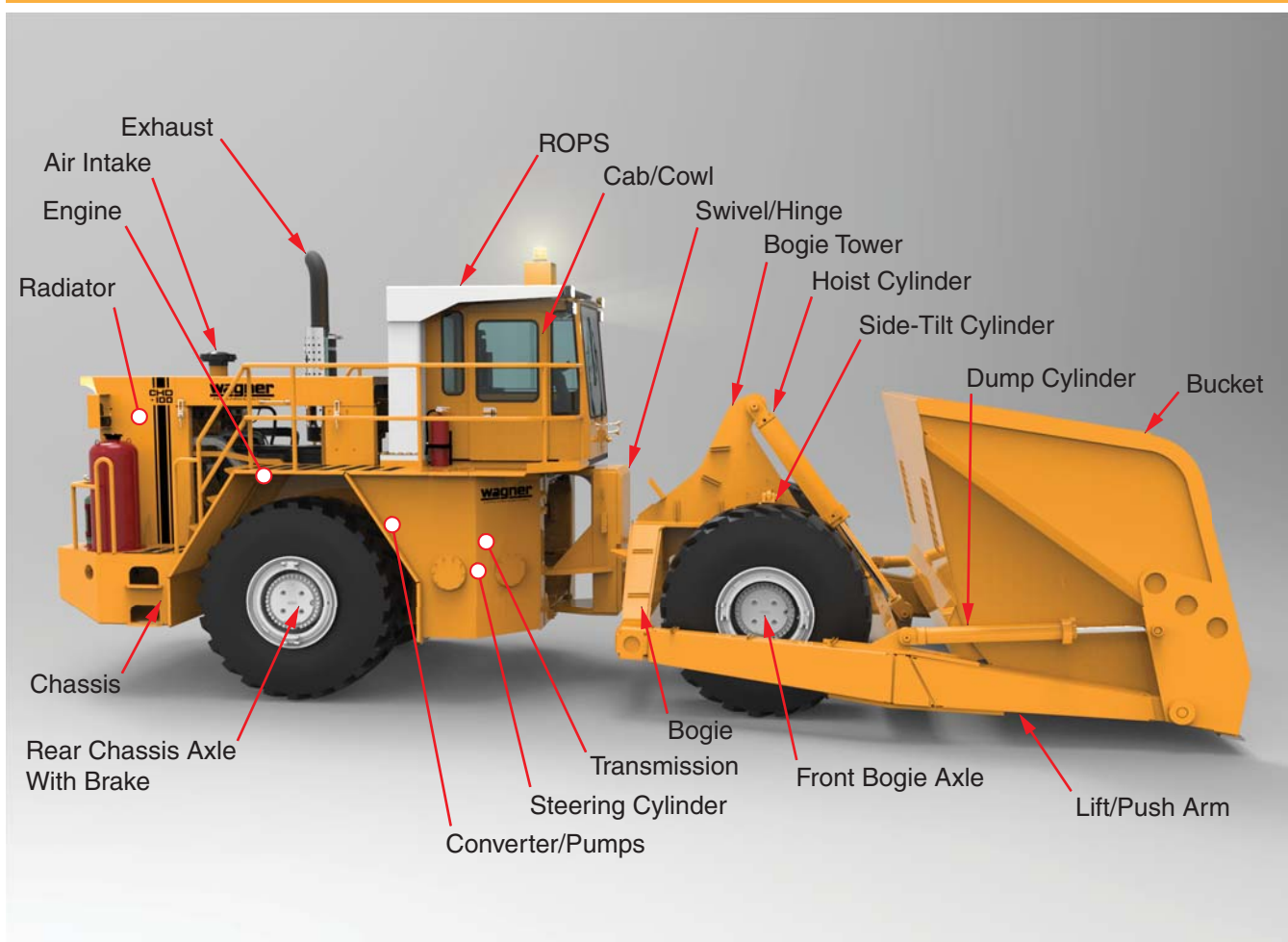


Figure 1-3-2 Terminology (Model CHD100 Shown for Reference)

Terminology

Refer to Figure 1-3-2 for terminology of components of your Carrydozer. Understanding and using this terminology when discussing your machine with your dealer, or with Allied Systems, will reduce confusion.

Additionally, many of these terms are used throughout this manual. Refer to Figure 1-3-2 for reference.