

## Jack Locations

Carefully follow these instructions and warnings to help prevent personal injury or damage to your Logstacker:

1. Park on firm level surface and lower the empty carriage to ground.
2. Engage parking brake and remove key from key switch. Tag key switch "DO NOT START" and follow your company's Lockout Procedure to ensure that the engine is not inadvertently started.
3. Block wheel on side of vehicle opposite of side being raised.
4. Use jack(s) in location(s) illustrated (See Figure 5-6-1). Use pads (anti slip material) that are minimum 4" x 4" in size between jack and Logstacker to prevent damage.

### REAR

Use two jacks when lifting entire rear end, one on each side. Each jack should be capable of lifting at least 20% of machines weight or 45,000 lbs (20,411 kg).

### FRONT

Use two jacks when lifting entire front end, one on each side. Each jack should be capable of lifting at least 40% of machine's total weight or 90,000 lbs (40,823 kg).

5. Place jack stand(s) as required. The jack stand(s) must be capable of holding entire weight of machine. Use pads (anti slip material) that are minimum 4" x 4" in size between jack stand(s) and Logstacker to prevent damage.



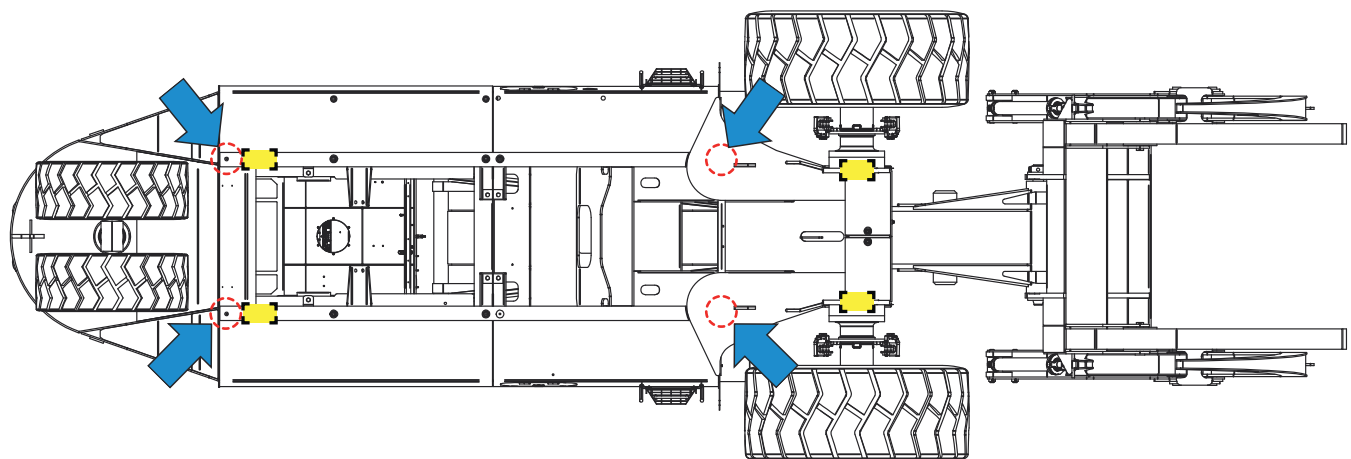
## WARNING

**Never rely on a jack or any lifting device to hold the weight of the Logstacker. Always use jack stands capable of holding the entire weight of the machine.**



## WARNING

**Do not let any person on or under the Logstacker while the machine is on a jack or any lifting device. Please call Allied Systems service department with any questions (503-625-2560).**



Jack Placement



Jack Stand Placement

Figure 5-6-1 Jacking Locations

---

**INTENTIONALLY LEFT BLANK**