

Spreading and Sorting

1. To unload the carriage for scaling or sorting, leave the carriage level or tilted slightly back. Lower the boom until the carriage is as close to the ground as possible (See Figure 4-7-1).
2. While backing the machine, slowly open the holddown arms and gradually push the load forward with the kickoff arms. This way, the logs can be dropped one at a time rather than all at once (See Figure 4-7-2).
3. If several logs fall off at once and form a pile, stop the machine, tilt the carriage forward, and using the holddown arms, rake the top logs back into the carriage.
4. When retrieving spread logs and the last one is beyond the ends of the tines, extra reach can be gained by tilting the carriage forward. This places the holddown arms in a position to rake the logs onto the tines. The distance the top of the carriage extends forward is the extra reach gained at the tip of the holddown arms (See Figure 4-7-3).
5. Figure 4-7-4 shows a good example of the Lumberjack's flexibility. The log is under the tines and is held by the holddown and kickoff arms. Partial loads should be held with the holddown and kickoff arms.

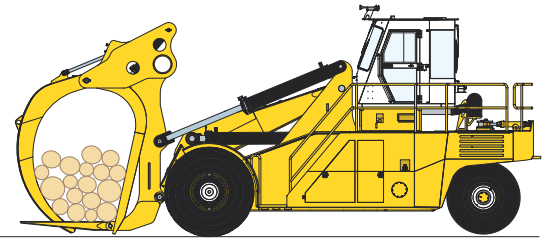


Figure 4-7-1 Ready to Spread

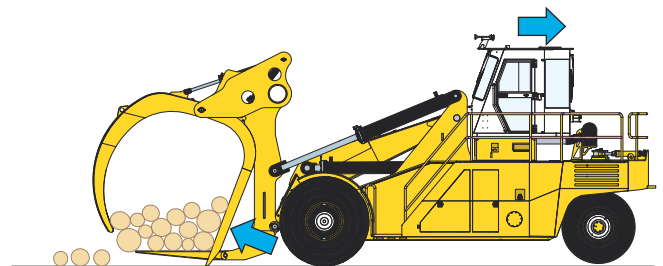


Figure 4-7-2 Spreading

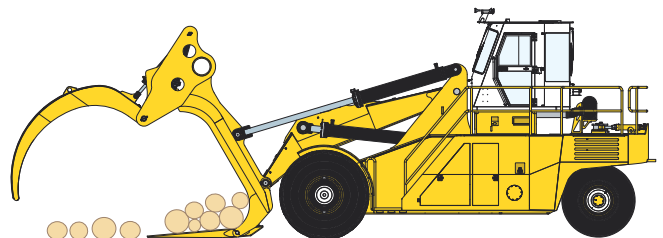


Figure 4-7-3 Retrieving

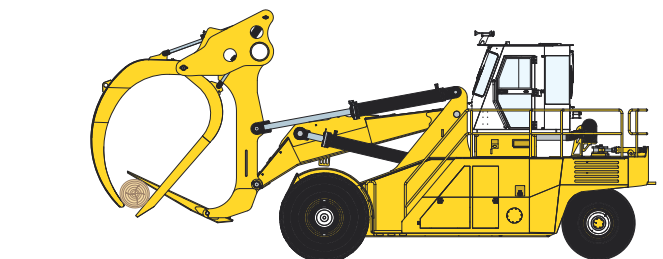


Figure 4-7-4 Flexibility

INTENTIONALLY LEFT BLANK