

Safety Controls

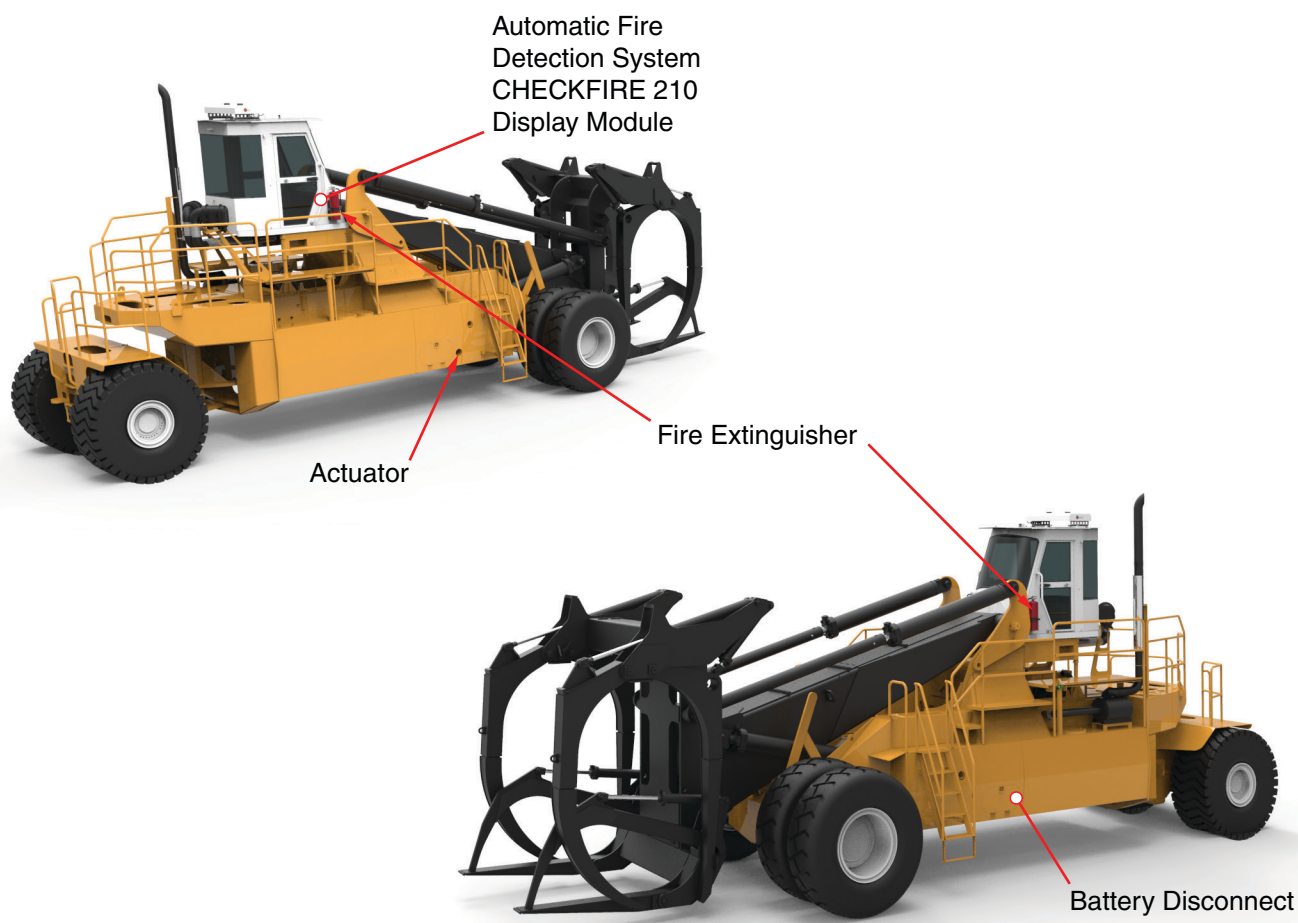


Figure 2-7-1 Safety Controls

Fire Suppression System

Your Fire Suppression System consists of an automatic detection system and one manual actuator. The CHECKFIRE 210 display module is located to the right of the steering column, mounted to the right hand wall of the cab (see Figure 2-7-2). A manual actuator is mounted on the chassis, at ground level, just to the left of the right side boarding stairs (See Figure 2-7-3).

The red button “PUSH TO ACTIVATE” on the CHECKFIRE 210 display module and the actuator at ground level will both set off the system.



Figure 2-7-2 CHECKFIRE 210 Display Module

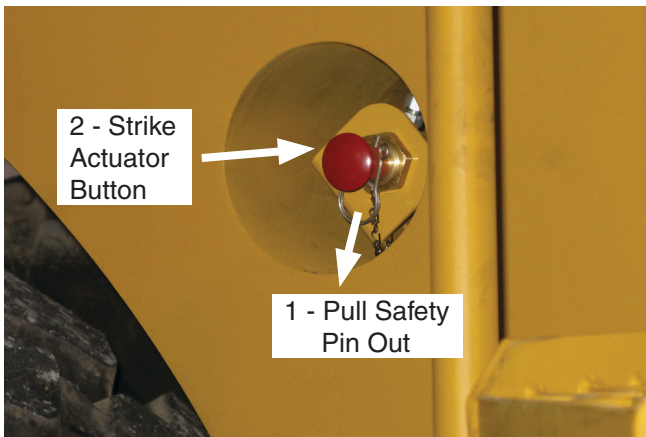


Figure 2-7-3 Ground Level Manual Actuator

IMPORTANT! The system may be actuated by either the operator or by ground personnel.

The operator may activate the system by pressing the red button on the CHECKFIRE 210 display module located to the right of the steering column, mounted to the right hand wall of the cab (see Figure 2-7-2 and Figure 2-7-4).

Ground personnel may activate the fire suppression system by pulling the pin and striking the button on the ground level actuator mounted on the chassis, at ground level, just to the left of the right side boarding stairs (See Figure 2-7-3)

In Case Of Fire

1. Swing the guard door open, press the red "Push to Activate" button on the CHECKFIRE 210 display module and then LEAVE THE VEHICLE (see Figure 2-7-4). Fire retardant will be released, the engine will shut down, and the batteries will be disconnected from the electrical system.

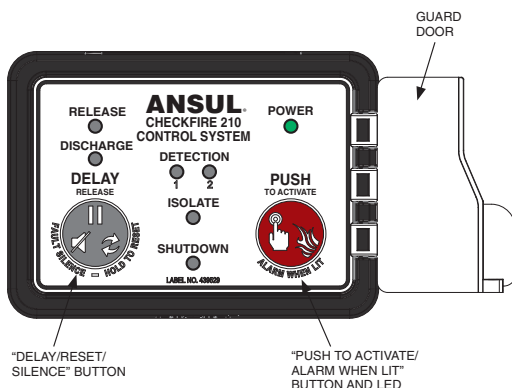


Figure 2-7-4 CHECKFIRE 210 Display Module

2. Call the Fire Department and/or service personnel as soon as possible. After the system has discharged, watch carefully for flare ups and spot fires while maintaining a safe distance.
3. Stay clear of the vehicle until it has cooled completely.



WARNING

After a fire, hydraulic and coolant hoses are an extreme hazard.

Stay away from the machine until it has cooled completely.

The hoses containing these very hot, pressurized fluids may have been damaged by the fire and could burst at any time, causing serious burns or other injuries.

4. Any time the system is discharged, it must be refilled and recharged before resuming operation. Only Ansul representatives are authorized to refill/recharge the fire suppression system.



CAUTION

All maintenance and servicing should be performed by a qualified service technician from your local authorized service center for your fire suppression system.

See form 80-1106 (located in your manual pack or <http://www.alliedsystems.com/pdf/Wagner/Forms/80/80-1106.pdf>) for more information on your CHECKFIRE 210 ICM system.

Fire Extinguisher (hand held)

Mounted on each side of the cab (see Figure 2-7-5). Follow operating instructions located on the fire extinguisher.



Figure 2-7-5 Fire Extinguisher

Battery Disconnect Switch

Mounted in battery compartment on the left side of the machine (see Figure 2-7-6).

This switch isolates the batteries from the electrical circuits and should be set to “off” when the machine is not in use, or during maintenance and repair, to prevent unauthorized starting or electrical shorts. Turn the switch counterclockwise to disconnect the battery. Follow your company’s lock out procedure.

NOTE: Allow 30 seconds between ignition key off and battery disconnect off events to avoid erroneous ECM fault code on electronic engines.



CAUTION

If any arc welding is to be carried out on the machine’s structure, it is extremely important that the disconnect switch is OFF. If the switch is left on, severe damage to the electrical system can result.

The batteries are automatically disconnected and engine is shut down whenever the fire suppression system is actuated.

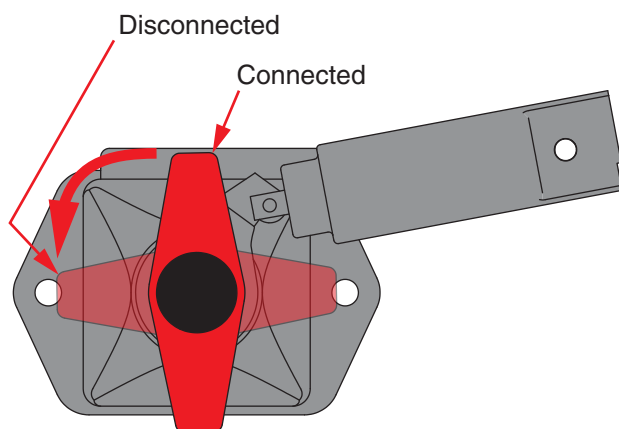


Figure 2-7-6 Battery Disconnect Switch

INTENTIONALLY LEFT BLANK