

## Machine Identification and Terminology

### Machine Identification

The model and serial number of your vehicle provide Allied Systems Company and your maintenance department with a way to keep a record of each machine. Each Lumberjack has the S.N. stamped into the chassis, usually near the right side ladder. Additionally, the nameplate, usually mounted on the right side, just under the cab, provides the model and serial number of your vehicle. See Figure 1-3-1.

**NOTE:** The Serial Number stamp or nameplate location may vary on your machine. The nameplate location shown in Figure 1-3-1 is typical. The nameplate may also be located inside the cab.

**NOTE:** The importance of the machine's model and serial number cannot be overstated. Always have these numbers at your fingertips when requesting parts, service, or operation information of any kind. It is from these numbers that our service department creates a unit file in which a complete history of your machine is maintained.

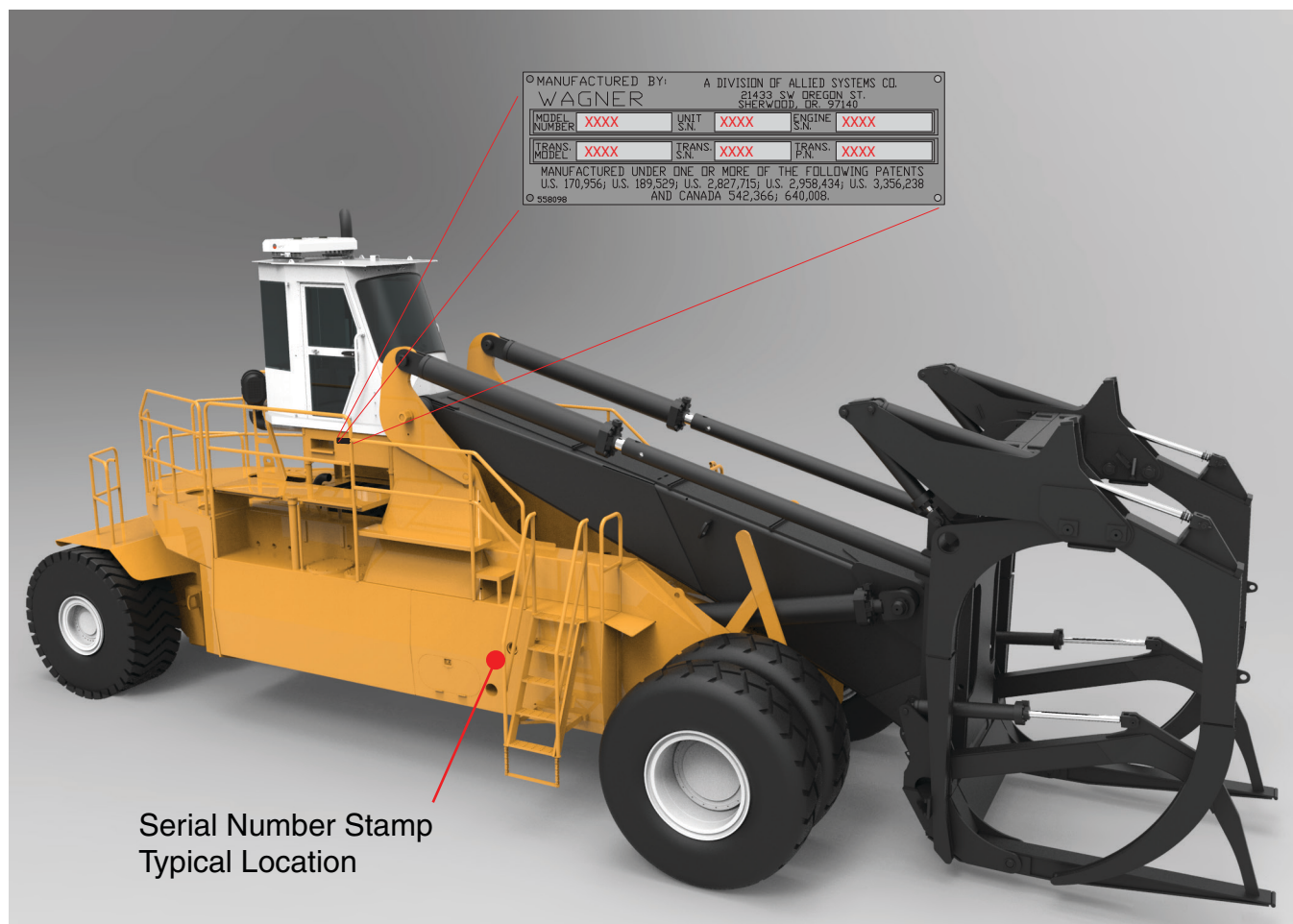
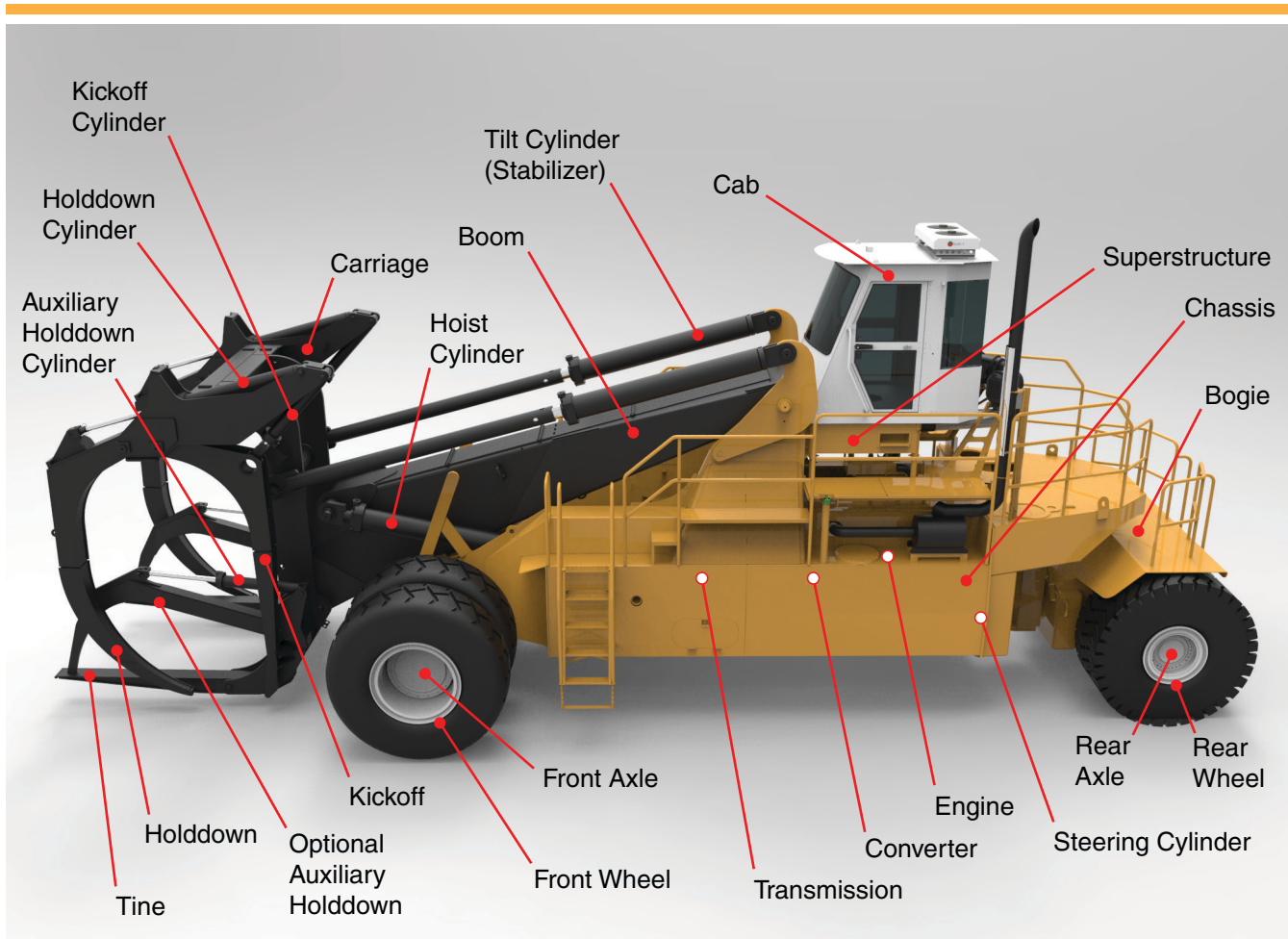


Figure 1-3-1 Nameplate and Serial Number Stamp Locations (Typical...your installation may vary)



*Figure 1-3-2 Terminology (Model L4100F Shown for Reference)*

## Terminology

Refer to Figure 1-3-2 for terminology of components of your Lumberjack. Understanding and using this terminology when discussing your machine with your dealer, or with Allied Systems, will reduce confusion.

Additionally, many of these terms are used throughout this manual. Refer to Figure 1-3-2 for reference.