

Machine Identification and Terminology

Machine Identification

The model and serial number of your vehicle provide Allied Systems Company and your maintenance department with a way to keep a record of each machine. Each Lumberjack has the S.N. stamped into the chassis, usually on the right side of the machine next to the ladder. Additionally, the nameplate, usually mounted on the front left side of the cab, provides the model and serial number of your vehicle. See Figure 1-3-1.

NOTE: The Serial Number stamp or nameplate location may vary on your machine. The nameplate location shown in Figure 1-3-1 is typical. The nameplate may also be located inside the cab.

NOTE: The importance of the machine's model and serial number cannot be overstated. Always have these numbers at your fingertips when requesting parts, service, or operation information of any kind. It is from these numbers that our service department creates a unit file in which a complete history of your machine is maintained.

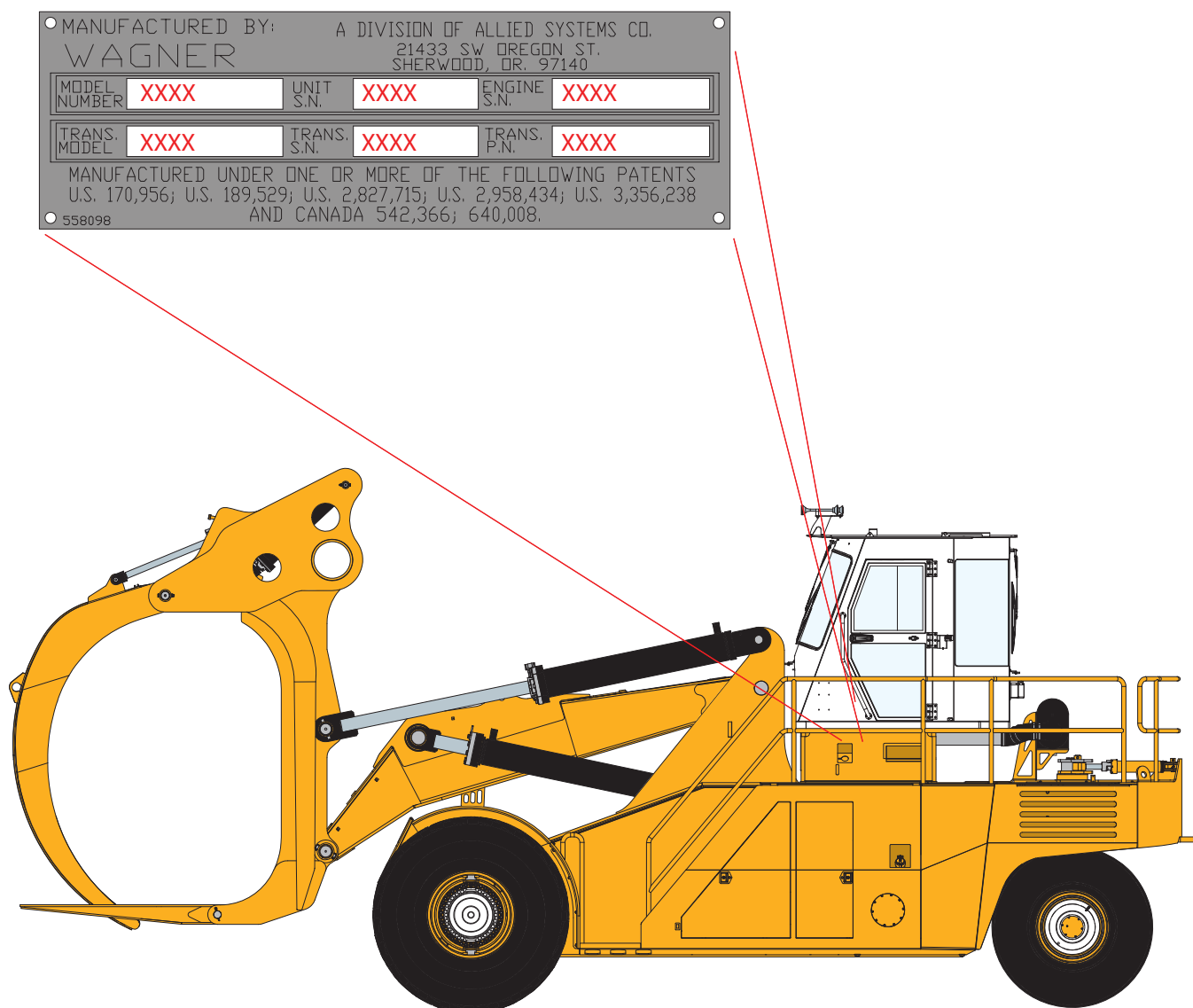


Figure 1-3-1 Typical Nameplate Location...your installation may vary (L60 Shown)

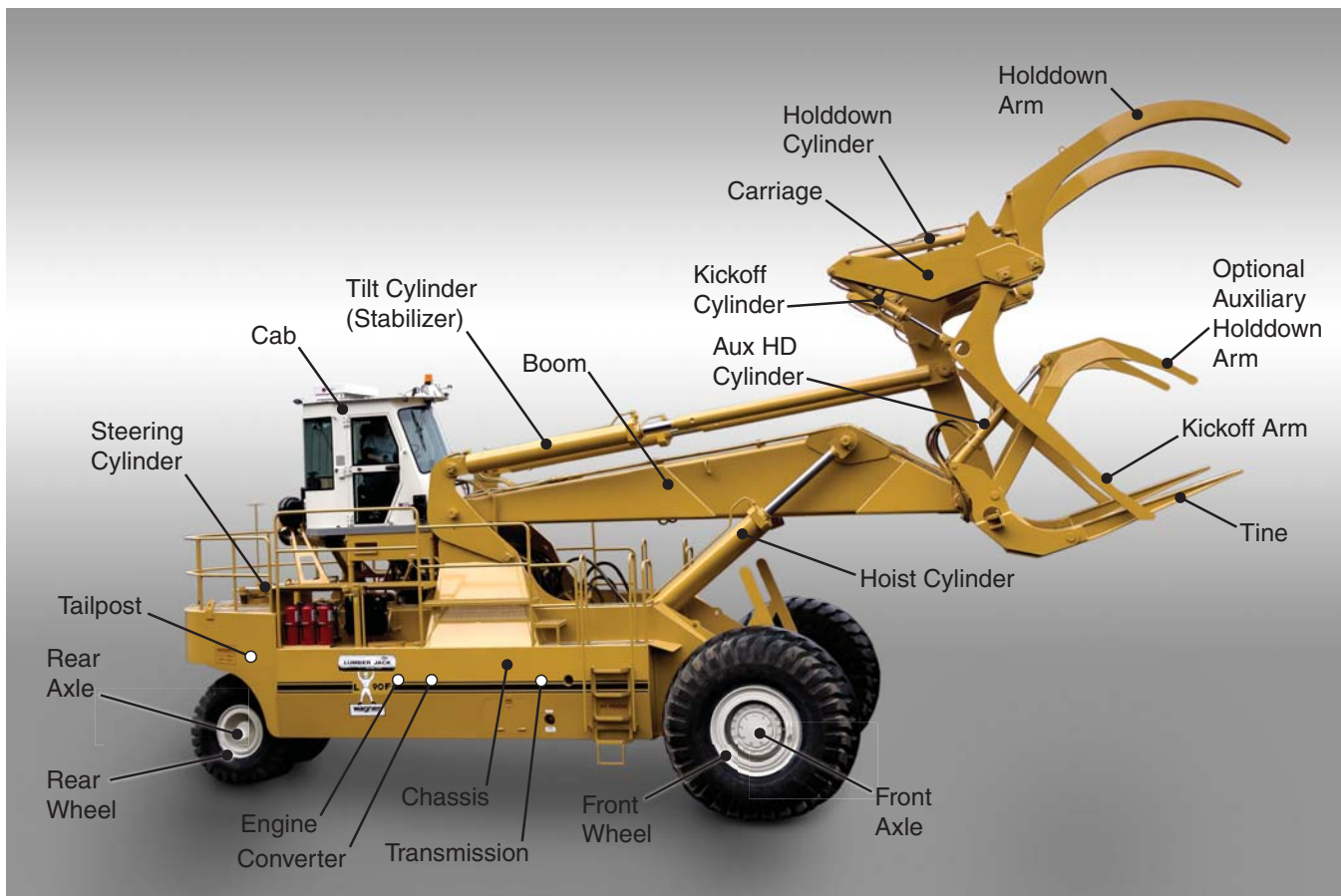


Figure 1-3-2 Terminology (Model L90F Shown for Reference)

Terminology

Refer to Figure 1-3-2 for terminology of components of your Lumberjack. Understanding and using this terminology when discussing your machine with your dealer, or with Allied Systems, will reduce confusion.

Additionally, many of these terms are used throughout this manual. Refer to Figure 1-3-2 for reference.