

wagner

TM440

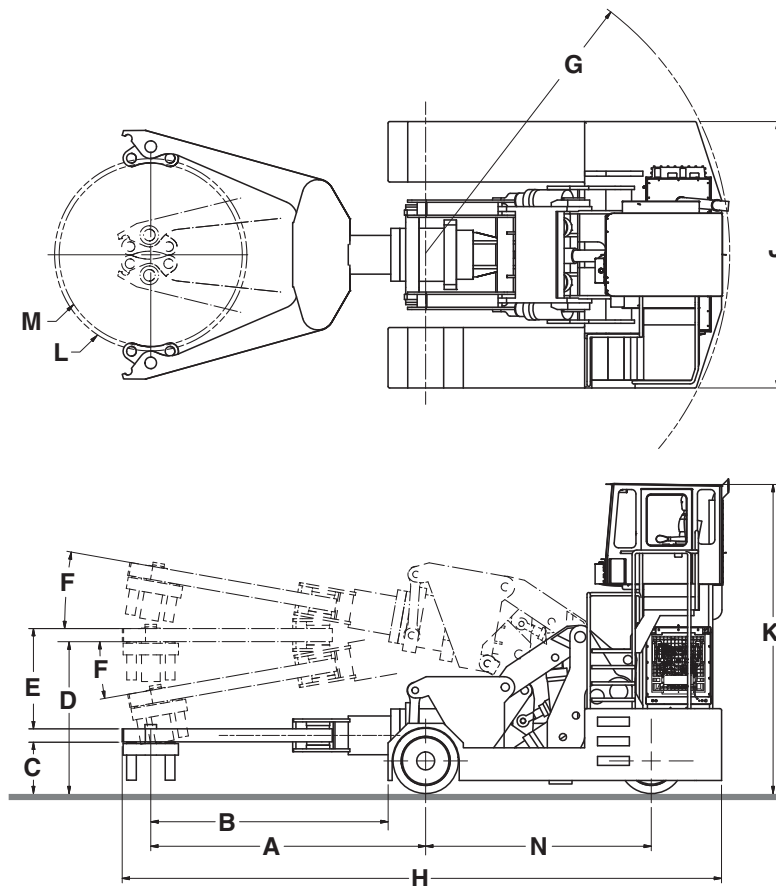
**Transport
Manipulators**



Purpose-Built

 **MADE IN USA**

TM440



Dimensions *

A	Center of Tongs to Center of Front Axle.....	14' 0" (4,267 mm)
B	Center of Tongs to Front of Machine.....	12' 1" (3,683 mm)
C	Height From Floor to Bottom of Tongs in the Parallel Position (Min).....	2' 8" (802 mm)
D	Height From Floor to Bottom of Tongs in the Parallel Position (Max).....	7' 9" (2,362 mm)
E	Parallel Vertical Lift.....	5' 1" (1,557 mm)
F	Vertical Tilt of Tongs.....	+/- 10 Degrees
G	Turning Radius.....	15' 6" (4,724 mm)
H	Overall Length With Tongs.....	30' 7" (9,321 mm)
J	Overall Width.....	13' 7" (4,140 mm)
K	Overall Height.....	15' 9" (4,800 mm)
L	Tongs Opening With Single Pin Grips.....	9' 8" (2,946 mm)
M	Tongs Opening With Double Pin Grips.....	9' 2" (2,794 mm)
N	Wheel Base.....	11' 6" (3,505 mm)
	Tongs Parallel Side Shift.....	+/- 5" (127 mm)
	Torque of Tongs, Max.....	15.5 ft-tons (42 kN·m)

* Approximate

Cycle Times

Lifting and Lowering of the Tongs	
Max.....	8"/sec (203 mm/sec)
Up.....	8"/sec (203 mm/sec)
Down.....	8"/sec (203 mm/sec)
Vertical Tilting of the Tongs.....	0-3 deg/sec
Tongs Rotation.....	0 - 5 rpm
Time for Tongs (full range)	
Open Appr.....	13 sec
Close Appr.....	11 sec
Tongs Side Shift.....	2" / sec (51 mm/sec)

Travel Speed Forward/Backward

Laden.....	0-2 mph (0-3.2 kph)
Unladen.....	0-6 mph (0-9.7 kph)

Service Refill Capacities

Hydraulic Oil.....	135 gal (511 L)
Diesel Tank.....	135 gal (511 L)
Average Fuel Consumption.....	5.25 gal/hr (20 L/hr)
Hydraulic Pressures	
Working Circuits.....	2,300 psi (158 bar)
Tongs.....	2,500 psi (172 bar)
Hyd. Drive Sys.....	2,000 - 4,000 psi (138 - 275 bar)

Capacity

Axle Loads

	Front	Rear
without Load	65,000 lbs (289 kN)	70,000 lbs (311 kN)
with Load at Max. Load Moment	134,000 lbs (596 kN)	32,000 lbs (142 kN)
Carrying Capacity		31,000 lbs (140 kN)
Load Moment.....		444,000 ft-lbs (596 kNm)
Stability (Tipping) Moment.....		806,000 ft-lbs (1,093 kNm)
Stability (Tipping) Factor.....		1.83
Machine Weight (Unloaded)		135,000 lbs (600 kN)
Machine Weight (Loaded)		166,000 lbs (738 kN)

Engine

Make and ModelCummins 6.7, Tier 4 Final
 Rated HP 225 HP (168 kW) @ 1,800 rpm

Drivetrain

Hydrostatic Rear Steering And Drive UnitBorghi Assali
 Brakes, Front, Hydraulic Assist..... Disc Brake

Tires

Rear tires (2) 40" (1,016 mm) dia. by 20" (508 mm) wide
 Front tires (4) 40" (1,016 mm) dia. by 16" (406 mm) wide

Features

Lighted Stairway Access..... Standard
 Central Lube

Power Unit

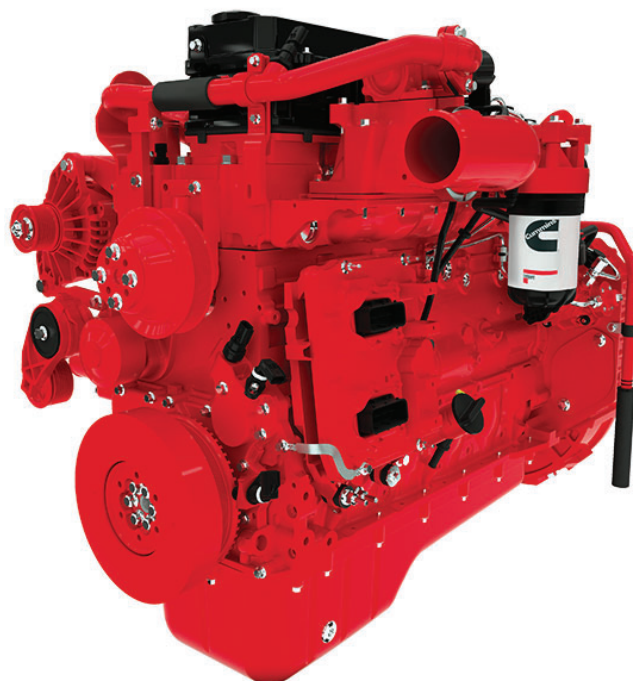
Quiet, efficient, and service friendly.

Our Tier 4 Cummins diesel engine is housed within an accessible, sound reducing enclosure alongside the hydrostatic and hydraulic pumps. The result: reduced noise emissions for a healthier, more comfortable operator environment—and maintenance made simple.

Electrical System

Built to start strong and stay strong.

The robust 24 VDC electrical system features dual 12V 8D batteries for dependable cranking power and long life. Power is delivered reliably to all critical systems including lights, starter, horn, backup alarm, beacon, and key switch.

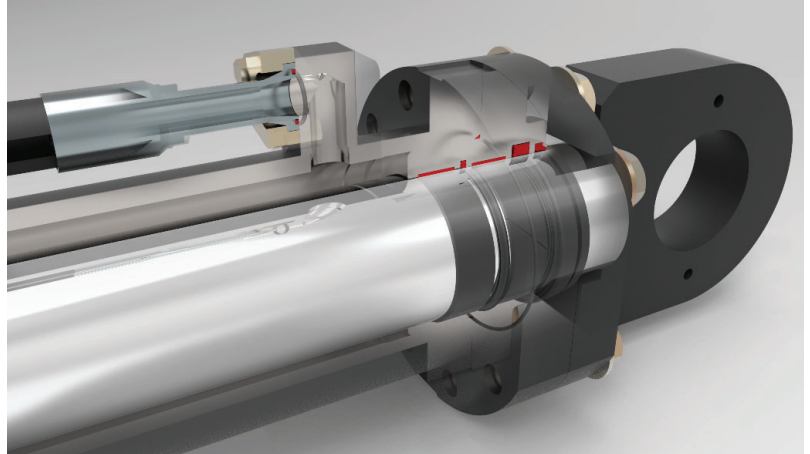


Hydrostatic Drive & Hydraulic Systems

Wagner designs for performance where heat is the enemy—especially in extreme temperature environments like forging operations.

Our hydrostatic and hydraulic systems are engineered to operate below critical component temperature limits, delivering longer life, higher reliability, and fewer leaks.

Continuous filtration from 5 micron return filters and optional high pressure filters ensure a clean, dependable hydraulic circuit every day.



Rear Axle

Engineered for rugged environments, the rear axle is trunnion mounted to the steering tiller, allowing it to adapt automatically to floor irregularities. Each wheel is independently hydrostatically driven, while 180 degree hydraulic motor steering ensures exceptional maneuverability and smooth directional control.

Front Axles

Wagner's front axles are independently trunnion mounted for superior adaptability on uneven surfaces. Each wheel features a durable dry disc brake with hydraulic actuation, providing reliable stopping power and operator confidence.



Precision Pin Joints

Every Wagner frame is meticulously line bored to ensure perfect pin joint alignment. Heavy-duty oil impregnated bronze bushings and centralized lubrication deliver outstanding durability, long service life, and superior machine responsiveness.

Advanced Manipulator System

Protect your product, your machine, and your operator.

Wagner's manipulator is fully cushioned vertically and longitudinally to minimize shock loads during demanding material handling.

The heavy duty rotator uses double taper roller bearings engineered for exceptional longevity, while an integrated accumulator maintains consistent clamping pressure for secure load handling.

Operator Cab

Step into the Wagner Oil Free Cab - crafted for unmatched comfort and all day productivity. An advanced air ride suspension seat, intuitive controls layout, and the Wagner Smart Screen put every critical function and performance insight right at your fingertips. And with standard Falling Object Protection (FOPS), operators stay safeguarded in the toughest environments.

Intuitive Controls

Master every movement with effortless precision. Wagner's ergonomic joystick system provides smooth control of lift, tilt, rotation, clamping, and side shift functions.

Our modern CANbus platform removes hydraulic oil from the cab environment, enhancing safety while reducing heat and operator fatigue. Fine tuning performance is easy—each function is fully adjustable directly through the Wagner Smart Screen, including the grip force.



Parts Support

Allied Wagner and its dealer network stock critical components to minimize downtime. Rebuild and component exchange programs are also available to further reduce lead times and costs.

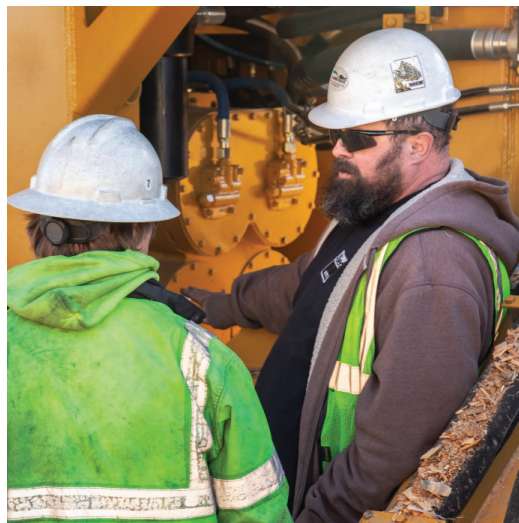
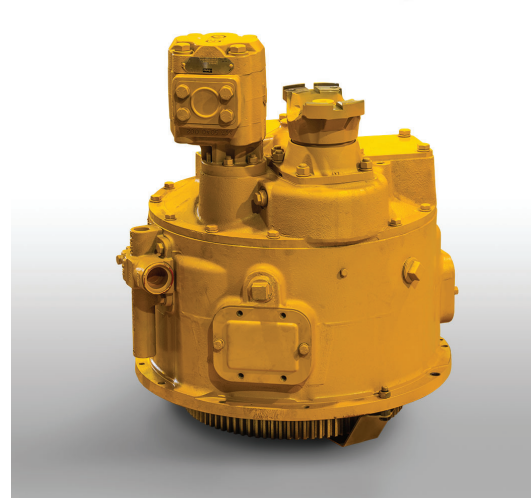
Technical Support – There When You Need Us

The Allied Wagner field service team stands ready to support you when you need it. With solutions engineered to minimize cost and return your machine to work in the shortest time possible, Allied Wagner is there when you need us, 24 hours a day, 365 days a year.

Training

Receive training from Allied Wagner factory personnel, at the location of your choosing:

1. **Your Mill** - Learn operator and maintenance best practices to make sure you are getting the best return on your investment.
2. **Your Dealer** - Allied Wagner trainers work with you and your dealer, at their facility, to make recommendations for service parts stocking and logistics, and provide up-to-date, advanced systems training to ensure proper troubleshooting and quick problem resolution.
3. **Allied Wagner Factory** - Receive detailed and hands-on systems training and troubleshooting instructions in the classroom and on the factory floor.



For over 50 years, Wagner has been known for extremely durable material handling equipment, with many machines more than 30 years old still operating as front-line equipment.

This durability comes from a history of “purpose built” equipment, allowing Wagner machines to perform the tasks they were designed to do at the highest level for longer periods of time without breaking down. The Wagner “purpose built” legacy is fully designed, manufactured, and tested in Sherwood Oregon, USA.



The Wagner Transport Manipulator proudly joins a long line of industry leading mobile equipment including the Logstackers, Chip and Biomass Dozers, HeavyLift Steel Transporters, Landfill Compactors, Steelworkers, and Coil Handlers.





wagner

A Division of Allied Systems Company

21433 S.W. Oregon Street
Sherwood, Oregon 97140 USA
Telephone: 503.625.2560 • Fax: 503.625.7980
E-mail: wagner@alliedsystems.com
www.alliedsystems.com

Where general information, pictures and descriptions are provided, some illustrations and specifications may require options not shown in the picture or included in the description. Specifications are subject to change without notice or obligation. Please consult your dealer for details.