

Carrydozer

Wagner Chipdozers



**Purpose built
Chipdozers.**

wagner
A Division of Allied Systems Company



MADE IN USA



Purpose-Built For Production Chip Handling

Wagner Carrydozers deliver what you need. Purpose-built for effective chip handling, the Carrydozer doubles productivity over straight blade machines by carrying as much in the bucket as it dozes in front.

Made in the USA

Wagner Carrydozers have been manufactured in the Portland, Oregon area for more than 50 years. Machines greater than 30 years old are still operating as front-line production machines. They are testimony to the high quality and durability Wagner Carrydozers are known for. In chip facilities around the globe, Carrydozers are the number one choice for high volume chip handling.

Carrydozer – Unmatched Capabilities

No other chip dozer on the market can match the Wagner Carrydozer's capacity, productivity or safety. Follow the contour of the chip pile with superb control thanks to the Carrydozer's front articulation and oscillation. The long bucket push arms allow the operator to maintain a safe distance from the edge of the chip pile while discharging loads. Carrydozer's capacity is unmatched because it can carry as much as it dozes, effectively doubling the capacity of each push.

Durable and Reliable – Designed for Long Life

Using a purpose-built machine for chip dozing results in longer component life and longer intervals between rebuilds. The Carrydozer's capacity options and proven design make the Carrydozer a more reliable machine for all chip handling applications.

Big Tires – Low Impact

Rubber tires are much gentler on chips compared to crawler track machines. Additionally, bucket carried chips are safe from the rolling damage you get with a dozer blade. Wagner Carrydozers also provide higher compaction than track dozers which means you can store more chips in less area while reducing the chance of fire. Rubber tired dozers are also preferred in noise-sensitive environments where track machines are restricted. Overall, you get a consistent high quality product with little waste and lower noise emissions.



Productivity..... 4

Operator Comfort..... 5

Safety 6

Serviceability 7

Customer Support..... 8

Carrydozer Models 9

Standard Features 10

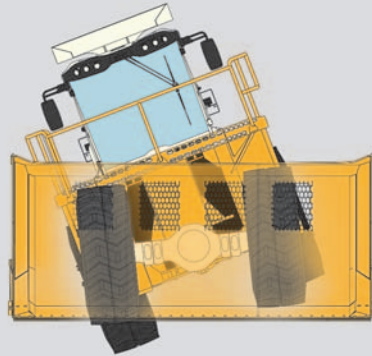
Options..... 11



Get the fastest cycles on any type of chip or hog fuel pile with the Wagner Carrydozer's combination of a balanced power train, low weight-to-horsepower ratio, proper load distribution to the axles, and a 4 speed forward and reverse selectable automatic powershift transmission, all designed to provide improved productivity and reduce operator fatigue.

Doze Right

- No other chip-handling machine has the double oscillating front load frame available on Wagner Carrydozers.
- The cutting edge position is controlled by front axle position and 12-degree bucket side tilt.
- **Bucket position** is maintained on rough and uneven surfaces. →
- The rear frame moves independently from the front load frame, which is mounted to a 30-degree oscillation joint just in front of the articulation joint. This keeps the cutting edge level as the rear tires travel over berms and uneven ground and makes better roads with improved operator comfort at higher dozing speeds.



True Side Tilt

- The dual-oscillating load frame design, found exclusively on Wagner Carrydozers, allows for six degree rotation in both directions about the vehicle's centerline.
- True Side Tilt provides better control and intuitive operation compared to conventional wheel and track dozers, which must use a combination of hoist and tilt functions to position the bucket correctly.

Smooth and Fast Dumping

- Dedicated pumps for each hydraulic function ensure full speed during simultaneous hoist and dump operations.
- Quick, complete load discharge is assured from the clean bucket design.
- The long bucket lift arms attach close to the front of the bucket, dumping twelve feet ahead of the axle centerline, keeping the tires away from the edge of the pile for maximum safety.



Operator Convenience & Comfort

A comfortable operator is a safe and productive operator. Wagner Carrydozer cabs are designed with features to minimize fatigue and maximize operator comfort. The Carrydozer's longer wheel base provides for a smoother ride over uneven terrain, helping to reduce operator fatigue.

Operator Cab with Certified ROPS/FOPS Canopy

- Cab includes all-weather insulation and excellent visibility in all directions.
- Air-conditioning/heater unit with pressurizer and fresh air filtration provide ample heating and cooling capacity throughout the cabin.
- Heavy duty, air-cushioned, adjustable seat with wide armrests.
- Seat-mounted joystick controls.
- Seat-mounted joystick steering.
- Optional trainer's seat, which folds out of the way when not in use.

Steering

Joystick power steering system provides precise, responsive steering, and minimizes operator fatigue by reducing static muscle strain. A fully rotating steering wheel is available.

Cushioned Cylinders

Dump cylinders are cushioned at both ends to eliminate impact at the end of the cylinder stroke, reducing operator fatigue and machine wear.

Operator Convenience

The new Wagner Smart Screen Operator Interface provides the operator easy visual access to the key machine parameters and warns the operator in the event of a failure. Diagnostics and troubleshooting information is available to maintenance personnel for fast and safe problem resolution.



Shown with optional steering wheel.



Wagner Carrydozers include the features you need to stay on top of the pile safely. Hand rails around walkways and tread grip on walking surfaces are standard. Stairway access and a walkaround cab platform provide safe operator ingress and egress. Electrical disconnect and hydraulic lockout facilitate lockout/tag-out procedures. A manually activated fire suppression system, including engine shutdown and electrical disconnect, is standard on every Wagner Carrydozer built. Optional automatic activation is available.

LH Brake Pedal with Selectable Declutch

- Operators are able to apply the brakes while maintaining full engine throttle position during the dump cycle.
- This provides maximum control of hydraulic and travel speeds while dumping.
- Alternatively, the transmission may be declutched while braking, providing full engine power to the hydraulics.

Visibility

- The lower back and side plates on the Wagner Carrydozer buckets provide maximum visibility to the bucket cutting edges and the chip pile.
- Standard and optional features include front and rear windshield wipers with an intermittent cycle, long life LED front and rear running lights, optional rear view camera, and optional warning beacon.

Maneuverability

- 40-degree articulated steering in both left and right directions provides maximum maneuverability for dozing on the most demanding pile, especially where space is limited.
- No-spin rear and limited-slip front differentials provide maximum traction and dozing force.



Simple, Fast, Easy

Wagner Carrydozers are production machines designed to work around the clock, 365 days a year. Downtime and maintenance costs are reduced with extended service intervals and easy access to service points. Central lubrication points are easily accessed from ground level for safe and quick lubrication of all pins. An optional Automatic Lube System reduces maintenance costs even further. Pressure test ports simplify troubleshooting and hydraulic adjustments. Components and filters are conveniently located to facilitate removal, disassembly and repair.

Tilt Up Engine Hood

- The spring-assisted, counterbalanced hood provides unobstructed access to the entire engine and all hydraulic compartments.

Swing Away Guard and Reversible Fans

- Quick access to the charge air cooler and radiator is made possible by the swing-away guard.
- Variable speed, reversible engine cooling fans keep the radiator and charge air cooler clean by blowing out dust and chips.

Keeping Cool

- Wagner Carrydozers are designed for near continuous operation.
- Removing heat and keeping components cool is critical to reducing maintenance costs and increasing time between rebuilds.
- Wagner Carrydozers use variable speed fans for engine, transmission, and hydraulic oil cooling to ensure optimal operating temperatures, and save fuel by turning only fast enough to maintain the correct fluid temperatures.
- The result is greater machine availability, and reduced maintenance, repair, and operating costs.



Parts Support

Allied Wagner dealers stock critical components to minimize downtime. Rebuild and component exchange programs are also available to further reduce lead times and costs.

Technical Support – There When You Need Us

The Allied Wagner field service team stands ready to support you when you need it. With solutions engineered to minimize cost and return your machine to work in the shortest time possible, Allied Wagner is there when you need us, 24 hours a day, 365 days a year.

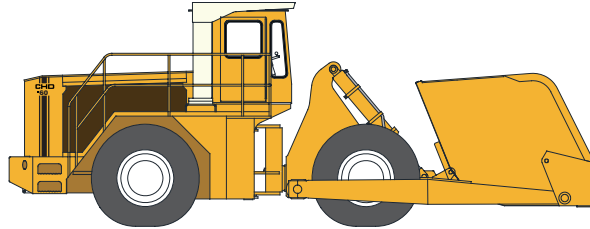
Training

Receive training from Allied Wagner factory personnel, at the location of your choosing:

1. **Your Mill** - Learn operator and maintenance best practices to make sure you are getting the best return on your investment.
2. **Your Dealer** - Allied Wagner trainers work with you and your dealer, at their facility, to make recommendations for service parts stocking and logistics, and provide up-to-date, advanced systems training to ensure proper troubleshooting and quick problem resolution.
3. **Allied Wagner Factory** - Receive detailed and hands-on systems training and troubleshooting instructions in the classroom and on the factory floor.

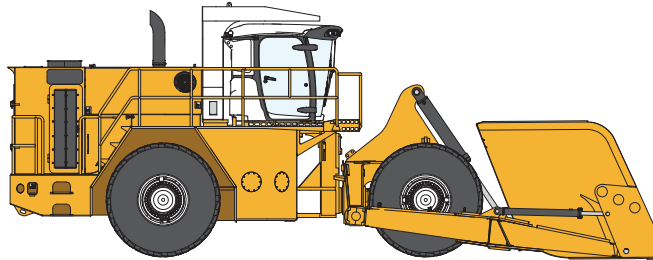


Carrydozer Models



CHD60

Max horsepower	hp (kw)	360 (270) at 2,100 rpm
Bucket push and doze capacity	cu/yd (cu/m)	60 (45.9)
Bucket lift and carry capacity	cu/yd (cu/m)	30 (22.9)
Operating weight	lbs (kg)	83,000 (37,800)



CHD100

Max horsepower	hp (kw)	535 (399) at 2,100 rpm
Bucket push and doze capacity	cu/yd (cu/m)	80 (61)
Bucket lift and carry capacity	cu/yd (cu/m)	40 (30.6)
* Bucket push and doze capacity (100 yd)	cu/yd (cu/m)	100 (76.5)
* Bucket lift and carry capacity (100 yd)	cu/yd (cu/m)	50 (38.2)
Operating weight	lbs (kg)	93,000 (42, 184)

*Optional 100 cu/yd Push & Carry Bucket

Engine	Standard	Option
Cummins tier IV final diesel engine	X	
Caterpillar tier IV final diesel engine		X
Three stage air cleaner (pre-cleaner, primary and secondary filter)	X	
Indicator glass for coolant level	X	
Reversible cooling fan	X	
Fuel pre-filter with water trap	X	
Fuel filter	X	
Hand throttle control	X	
Engine block heater		X
Delayed shutdown		X
Idle shutdown		X
Engine derate in case of malfunction indication: High engine coolant temperature Low engine oil pressure High charge-air temperature	X	
Engine shutdown in case of malfunction indication: Low engine oil pressure High engine coolant temperature		X

Instruments	Standard	Option
Wagner Smart Screen, includes: Bucket Park Declutch Declutch Indicator Engine Coolant Temperature Engine Load Engine Oil Pressure Gauge Engine Push Start and Stop Button Load Weight Ether start Fuel Efficiency Fuel Level Gauge Hydraulic Oil temperature Gauge Implement Lock Load Holding Low Brake Pressure Indicator Low Lube Indicator Manual/Automatic Shifting Parking Brake Button Regen Initiate / Postpone Speedometer Tachometer Throttle Transmission Direction and Gear Transmission Oil temperature and Pressure Gauge Voltmeter	X	
Start interlock when gear is engaged	X	
Remote Monitoring		X
Hour Meter	X	

Capacity	Standard	Option
CHD100 40/80 yard carry/doze	X	
CHD100 50/100 yard carry/doze		X
CHD60 30/60 yard carry/doze	X	

Drivetrain	Standard	Option
Modulated power shift transmission, four forward, four reverse gears with selectable automatic shifting	X	
Limited slip differential, front axle	X	
No Spin differential, rear axle	X	
Torque converter lock-up		X
Selectable transmission declutch	X	
Speed limiter		X
Secondary emergency steering		X
Force cooled oil disc brakes, rear axle	X	
Parking brake on the rear axle, spring applied, hydraulically released	X	

Cab	Standard	Option
ROPS/FOPS certified structure	X	
Acoustic inner lining	X	
12V power converter with outlet	X	
Lockable door	X	
Cab heating with fresh air inlet and defroster	X	
Filtered, pressurized fresh air inlet	X	
Automatic climate control	X	
Floor mat	X	
Interior lights	X	
Tinted safety glass	X	
Lap belt	X	
Ergonomic heavy-duty operator's seat with adjustable position and air - suspension	X	
Seat-mounted adjustable operator controls	X	
Steering, joystick	X	
Steering wheel, adjustable		X
Steering wheel knob		X
Document pocket	X	
Windshield washer front	X	
Windshield wipers front	X	
Interval function for front wipers	X	
Service platforms with slip protected surfaces	X	
Trainers Seat		X
Dual exterior rear-view mirrors	X	
Heated rear-view mirrors		X
Radio with MP3 player	X	
Rear-view camera with color monitor		X
Elastomeric isolator cab mounts	X	
Cupholder	X	
Coat Hanger	X	

External Equipment	Standard	Option
Rubber isolated engine and transmission mounts	X	
Lifting eyes	X	
Tie-down eyes	X	
Fenders, fixed, rear	X	

Standard Features & Options

Electrical System	Standard	Option
24V	X	
Alternator 24V / 100A	X	
Battery disconnect switch	X	
Electric horn	X	
Lighting: six forward facing and four reverse LED lights	X	
Reverse alarm	X	
Batteries, high capacity	X	
Anti-theft device		X
Warning beacon, rotating		X

Service and Maintenance	Standard	Option
Centralized lubrication points, ground accessible	X	
Automatic lubrication system		X
Spindle nut wrench kit		X
Pressure check connections: transmission and hydraulic, quick-connect	X	

Support	Standard	Option
500 and 1,000 hour service kits		X
Operator training, service training, and advanced systems training courses		X

Hydraulic System	Standard	Option
Main valve, double-acting 2-spool with electric / pilot oil controls	X	
Pumps:		
Steering, Hoist, Tilt, and Dump (Piston)	X	
Brake, Pilot, and Cooling (Gear)		
Double-acting hydraulic cylinders	X	
Hydraulic oil cooler	X	
Hydraulic tank heater		X
Bucket Float		X
Bucket Side Tilt (CHD 60)		X
Bucket Side Tilt (CHD 100)	X	
Biodegradable hydraulic fluid		X
Fire-resistant hydraulic fluid		X

Protective Equipment	Standard	Option
Liquid-type fire suppression system (manual activation)		X
Liquid-type fire suppression system (auto-activation)		X





wagner

21433 SW Oregon Street
Sherwood, OR 97140-9808 USA
+1.503.625.2560 (Phone)
+1.800.285.7000 (Toll Free)
+1.503.625.5132 (Fax)
www.alliedsystems.com

© Copyright Allied Systems Company, 2023
Printed in U.S.A.

Note: Specifications are subject to change without notice.

85-583 Rev: 11/2023