

wagner

L60



Purpose-Built Log Handlers

 **MADE IN USA**

L60

Capacity

Tipping Capacity	@ 48" Load Center...	70,000 lbs (31,750 kg)
Rated Capacity	@ 48" Load Center...	60,000 lbs (27,216 kg)

Engine (Tier 4 Final)

Make and Model	Cummins QSG12
Max Horsepower	400 HP
<i>Optional:</i>	
Make and Model	Caterpillar C13
Max Horsepower	440 HP

Service Refill Capacities

Fuel Tank	180 Gal (681 liters)*
Hydraulic Oil	240 Gal (908 liters)*
Engine w/Filter	9 Gal (34 liters)*
Cooling System	13 Gal (49 liters)*
	* Approximate

Drivetrain

Front Axle	Double Planetary Reduction
Integral Transmission/Converter w/Automatic Shifting	4 Speeds Fwd/Rev

Tires

Single Drive Tires	Standard
Front	(2) 65/35 x 33
Rear	(2) 18.00 x 25
Biased Ply Tire Construction	Standard
Radial Tire Construction	Optional

Cab

Best in class working environment includes the following:

Noise (dBa) Inside Cab (ISO 6396:2008)	72 dB
Visibility	360°
Convex Front Windshield	Standard
Falling Objects Protection (F.O.P.) Certification	Standard
Dual Heat/AC	Standard
Air Seat Suspension for Operator Comfort	Standard
Cab Isolation from Chassis (Noise/Vibration Reduction)	Standard
Rotating Platform, 90°	Optional
Sliding Windows	Optional
Load Dampening	Optional
Joystick Steering	Optional

Features & Options

Wet Disc Brakes	Standard
Remote Engine Oil Drain	Standard
Dual Lighted Stairway Access	Standard
Central Lube	Standard
Sight Gauges	Standard
Ground Level Service Bay	Standard
LED Lights (Two Forward Cab Mounted, Two Forward Carriage Mounted, 2 Rear Cab Mounted)	Standard
ANSUL Fire Suppression (Liquid)	Optional
Tilt Cab	Optional
Front and Rear Cameras	Optional
Warning Beacon	Optional
Converter Lockup	Optional

Cycle Times†:

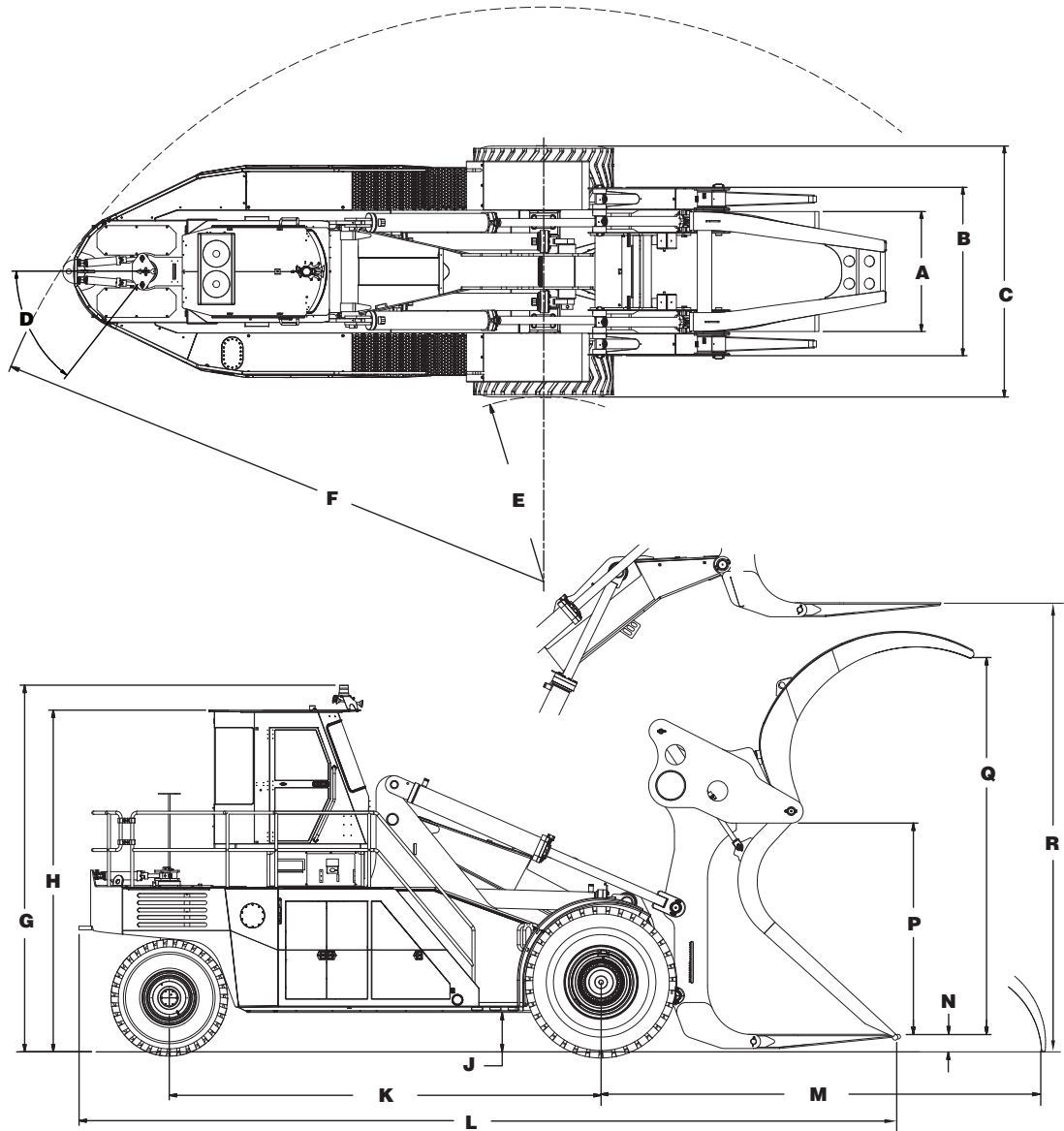
Raise	11.0 Seconds
Kickoff	3.0 Seconds
Lower, Empty	9.0 Seconds
Total Cycle Time	23.0 Seconds

Speed (Unladen)

1	3.5 mph (5.6 km/h)
2	7.3 mph (11.7 km/h)
3	12.2 mph (19.6 km/h)
4	22.0 mph (35.4 km/h)

† Calculated at 50% of static tipping load

L60



Dimensions*

A. Width Outside of Tines.....	5' 11" (1,803 mm)
B. Carriage Width.....	8' 4" (2,540 mm)
C. Width	12' 5" (3,785 mm)
D. Tailpost Steering Angle	52°
E. Inside Turning Radius	9' 2" (2,794 mm)
F. Swing Radius.....	28' 5" (8,661 mm)
G. Cab Height (highest point)	16' 8" (5,080 mm)
H. Cab Height	15' 8" (4,775 mm)
J. Ground Clearance	1' 10" (559 mm)
K. Wheelbase	19' 8" (5,994 mm)
L. Length	37' 5" (11,405 mm)
M. Distance from Axle to Holddown Tip	23' 3" (7,087 mm)
N. Ground to Front Tip of Tine	10" (254 mm)
P. Carriage Open Height.....	9' 7" (2,921 mm)
Q. Hold Down Open Height.....	17' 1" (5,207 mm)
R. Lift Height	20' 2" (6,147 mm)

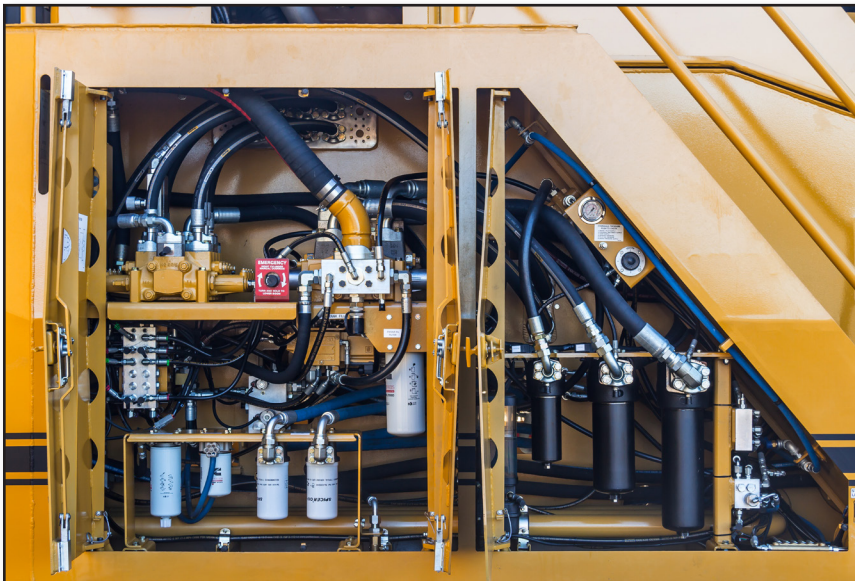
Weights*

Unit Weight (Empty)	120,000 lbs (54,431 kg)
Unit Weight (Loaded).....	190,000 lbs (86,183 kg)

Carriage Tilt Angles:

Forward Tilt @ Ground Level	54°
Forward Tilt @ Max Height.....	18°
Backward Tilt @ Ground Level.....	10°
Backward Tilt @ Max Height	61°

* Approximate



wagner

A Division of Allied Systems Company

21433 S.W. Oregon Street
Sherwood, Oregon 97140 USA
Telephone: 503.625.2560 • Fax: 503.625.7980
E-mail: wagner@alliedsystems.com
www.alliedsystems.com