

IMPORTANT! Read Entire Document Before Operation

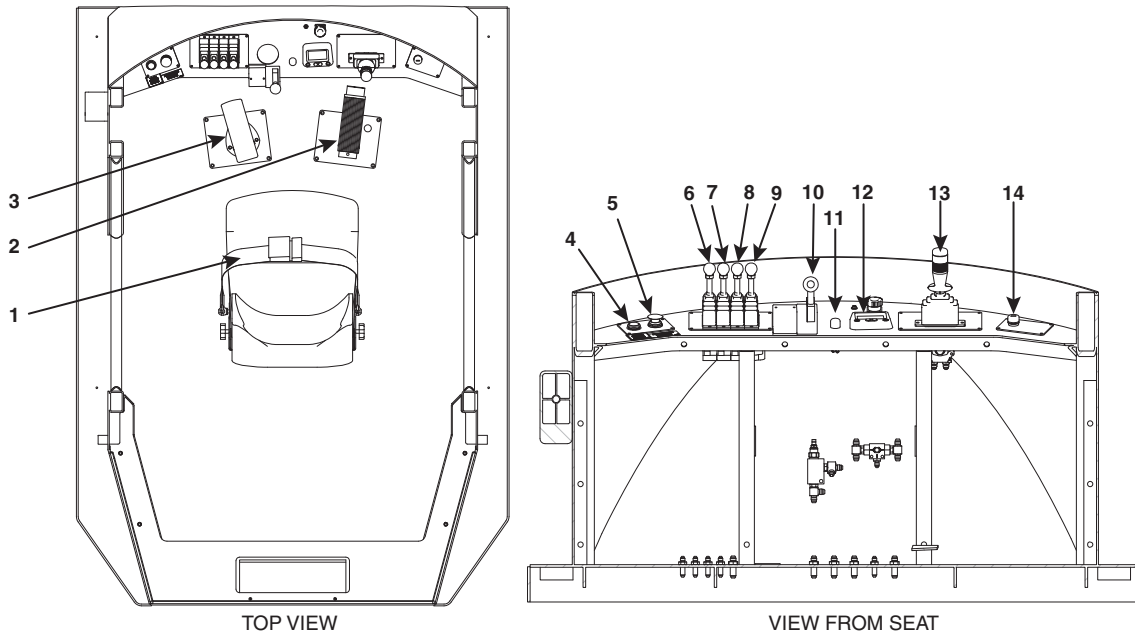


Figure 1 Lumberjack Shipping Platform

Lumberjack Shipping Platform Operators Instructions

! WARNING

Make sure people are away from the Lumberjack before starting and operating to prevent injury.

Controls

1. **Seat Belt**
Always wear seat belt when operating Lumberjack.
2. **Accelerator Pedal**
3. **Brake Pedal**
4. **Parking Brake Indicator Light**
If the key switch is ON, and parking brake is ON, this light will be ON.
5. **Parking Brake Control**
To apply the parking brakes, pull the button out. To release the parking brakes, push the button in.

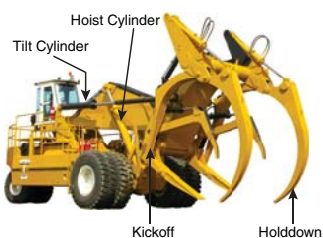


Figure 2 Lumberjack

6. **Kickoff Controller**
Moves Kickoff Arms forward and back.
7. **Holloddown Controller**
Push to open, and pull to close.
8. **Tilt**
Push to tilt Carriage forward, and pull to tilt Carriage back.
9. **Hoist**
Push to lower and pull to raise.
10. **Transmission Shifter**

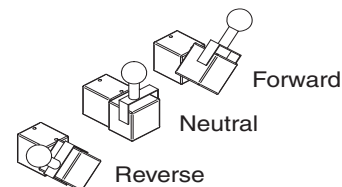


Figure 3 Transmission Shifter

NOTE: The machine will only run in first gear with the Shipping Platform installed. Second, third and fourth gear have been inhibited.

11. **Horn**
12. **PowerView Module**
The PowerView Display Module is a multi-function tool that enables the operator or service personnel to view many different engine parameters as well as engine service codes.

13. Steering Lever

Move lever right to steer right and move left to move left.

14. Ignition Switch

This is a four position switch: ACC, OFF, RUN and START. When turning the key clockwise from the center, or OFF position, the first position to the right is RUN. The second is START.

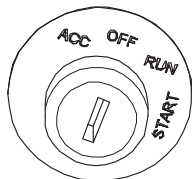


Figure 4 Ignition

Engine Pre Start

1. Remove Wheel Chocks.
2. Set Battery Disconnect to ON. Battery Disconnect is located in the battery Box on the left side of the Lumberjack.

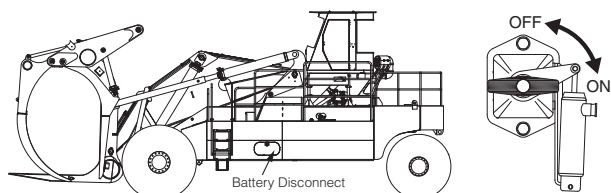


Figure 5 Battery Disconnect Switch shown in ON position

Starting Engine

NOTE: Do not adjust the engine speed during start-up. The electronic control module (ECM) will control the engine speed during start-up.

1. Make sure the transmission shifter is in the “neutral” position (see Figure 3).
2. Give warning that you are going to start the engine. Make sure that all personnel are clear of the machine, as you may not be able to see them from the cab. Be sure that the area around the machine is clear of all obstructions.
3. Turn the key switch clockwise to the START position in order to engage the starting motor and crank the engine (see Figure 4).
4. Allow the key switch to return to the RUN position after the engine starts.

Operation

1. Make sure that the area is clear of obstructions and/or personnel. It is possible for several people to stand under or near the machine, out of sight of the operator. It is recommended that you sound the horn before moving the machine.
2. Depress service brake pedal and release park brake.
3. Place the transmission shift lever into the “forward” or “reverse” position.

NOTE: The machine will only run in first gear with the Shipping Platform installed. Second, third and fourth gear have been inhibited.

4. Release the service brake and depress the throttle pedal slowly and smoothly. Avoid sudden or jerky starts. Depress the pedal just enough to begin moving slowly.

Engine Shutdown

1. Move the throttle to idle speed, and let the engine idle for 5 minutes in order to normalize internal engine temperatures.
2. Meanwhile, place all controls in neutral and set the parking brake.
3. To stop the engine, turn the key switch to the OFF position.
4. Set Battery Disconnect to OFF. The Battery Disconnect switch is located in the battery Box on the left side of the Lumberjack (see Figure 5).
5. Chock Wheels.