

Service Instructions

MICO 466 Series Tandem Power Brake Valve

Disassembly

NOTE: HOUSINGS (8 & 13) AND SPOOLS (9 & 12) ARE MANUFACTURED AS MATCHED SETS. THESE SETS (HOUSING & SPOOL) MUST NOT BE INTERMIXED WITH OTHER PARTS.

1. Remove boot (22) from piston (21) and housing (13). Not all models use boot (22).
2. Remove piston (21), springs (18, 19 & 20) shim(s) (17) and retainer assembly (16) from housing (13). Not all models use spring (18). Note: Be aware of the number of shim(s) being removed from housing.
3. Carefully remove cup (15) and seal (14) from housing (13) bore. Note: Be careful not to scratch or mar housing bore.

4. Remove end plug (1) and spring (3) from housing (8). Remove O-Ring (2) from end plug (1).
5. Remove plug (6) from housing (8). Remove O-Ring (7) from plug (6). Not all models use plug (6) and O-Ring (7).
6. Separate housings (8 & 13) by removing capscrews (4) and washers (5). Remove O-Rings (10 & 11) from housings (8 & 13).
7. Carefully remove spools (9 & 12) from housings (8 & 13). Note: Be careful not to damage spools or housing bores.



CAUTION

DO NOT INTERMIX SPOOLS & HOUSINGS. SPOOL (9) AND HOUSING (8) ARE A MATCHED SET, AS ARE SPOOL (12) AND HOUSING (13).

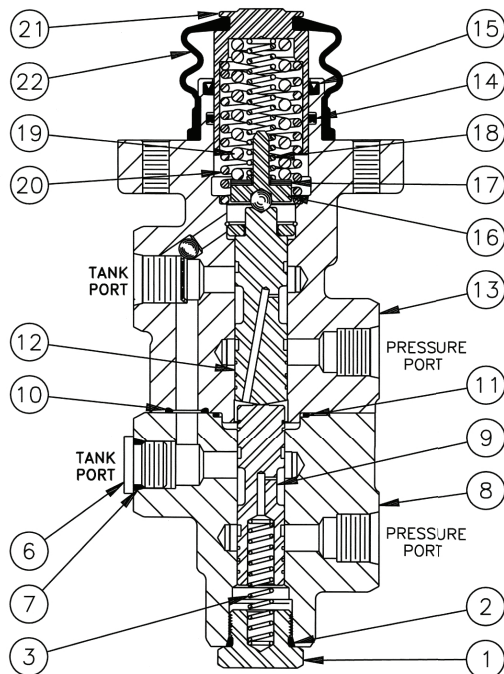


Figure 1

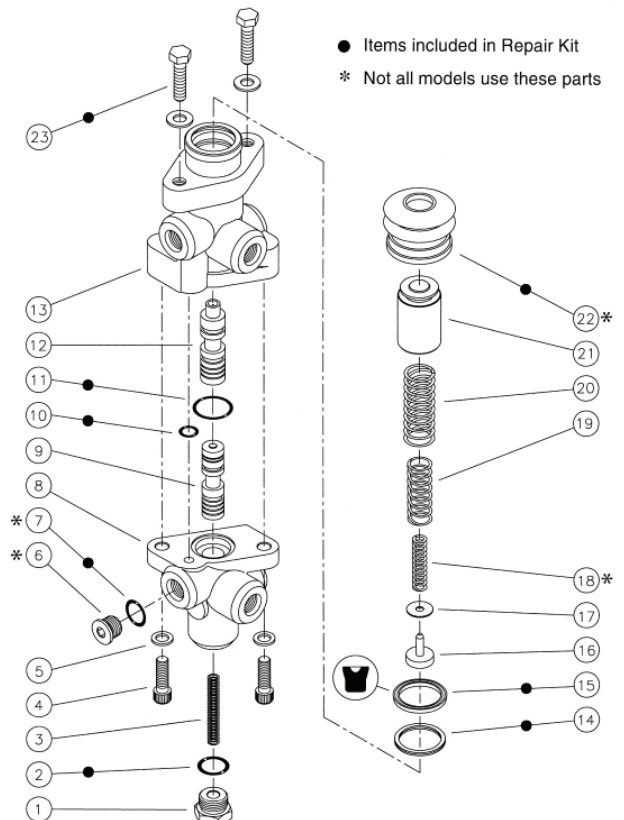


Figure 2

Assembly

NOTE: LUBRICATE ALL RUBBER COMPONENTS FROM REPAIR KIT WITH CLEAN TYPE FLUID USED IN THE SYSTEM.

1. Clean all parts thoroughly before assembling.
2. Install new O-Rings (10 & 11) in proper O-Ring pockets on housings (8 & 13).
3. Lubricate spool (12) with clean system fluid and carefully slide into bottom end of housing (13) bore. Note direction of spool (12). NOTE: Spool must slide freely into bore. If either part is damaged, a new spool/housing assembly may be required.
4. Reassemble housings (8 & 13) using capscrews (4) and washers (5). Use Loctite 242 on capscrews and torque 29.8-33.9 N-m (22-25 lb-ft). NOTE: Make sure housings line up correctly and O-Rings (10 & 11) remain in their pockets during assembly.
5. Install new O-Ring (7) on plug (6) and install plug (6) in housing (8). Torque plug (6) 27.1-32.5 N-m (20-24 lb-ft). Not all models use plug (6) and O-Ring (7).
6. Lubricate spool (9) with clean system fluid and carefully slide into housing (8) bore. Note direction of spool (9). NOTE: Spool must slide freely into bore. If either part is damaged, a new spool/housing assembly may be required.
7. Install new O-Ring (2) on end plug (1).
8. Install spring (3) and end plug (1) into housing (8). Torque end plug 47.5-54.2 N-m (35-40 lb-ft).
9. Carefully install new cup (15) and new seal (14) into housing (13) bore. Note direction and order of cup and seal. NOTE: Be careful not to scratch or mar housing bore.
10. Assemble springs (18, 19 & 20), shim(s) (17) and retainer assembly (16) in piston (21). Not all models use spring (18).
11. Carefully install piston (21) assembly into housing (13) bore.
12. Install new boot (22) on housing (13) and piston (21). Not all models use boot (22).
13. When reinstalling pedal actuated valve use new hex capscrews (23), 5/16-18 grade 8. Torque capscrews 24.4-29.8 N-m (18-22 lb-ft). NOTE: Not all repair kits include capscrews (23).

NOTE: AFTER SERVICE, THE VALVE MUST DEVELOP 775 ± 50 PSI. SHIM(S) (17) MAY BE ADDED OR REMOVED TO OBTAIN THE CORRECT PRESSURE SETTING.