

Hydraulic Pump Troubleshooting Guide

This troubleshooting guide applies to the following pumps:

236243, 237490, 239141, 239790, 245521, 248730, 250035, 257073

Refer to Figure 1 for all item callouts.

PROBLEM	CORRECTIVE ACTION
<p>Low hydraulic pressure.</p> <ol style="list-style-type: none"> 1. Worn compensator spool (item 39). 2. Broken compensator spring (item 42). 3. Sticking compensator spool (item 39). 4. Plugged control piston orifice (item 43). 5. Cocked compensator shims or shims are bent (item 52). 6. Control piston stuck in bore (item 38). 	<p>Disassemble & Examine Control</p> <ol style="list-style-type: none"> 1. Remove screws (item 50) and remove the control cover (48). 2. Remove the control spring (46) and control piston stop (54). 3. Remove the compensator adjustment assembly (52). Check the push pins and shims for freedom of movement. 4. The control plug (47) can be removed using a 10-24 x 6" screw or all thread. Insert screw or all thread into plug and pull straight out. Upon removal, inspect for wear and damage to the O-ring. 5. Remove and inspect the compensator spring (42) and spring seat (40). Spring should be in one piece. 6. Remove four control mounting screws (30) and lift control off pump. 7. Remove the control piston (38) and inspect for scoring. Piston should move freely in the control bore. 8. Check the control orifice (43) for debris, and clean if necessary. 9. Inspect the control bore for wear.
<p>Pump erratic</p> <ol style="list-style-type: none"> 1. Plugged control orifice (item 43). 2. Broken control piston spring (item 46). 3. Broken compensator spring (item 42). 4. Control orifice backed out (item 43). 	
<p>Hydraulic system hot</p> <ol style="list-style-type: none"> 1. Worn compensator spool (item 39). 2. Compensator set higher than system relief valve. 	

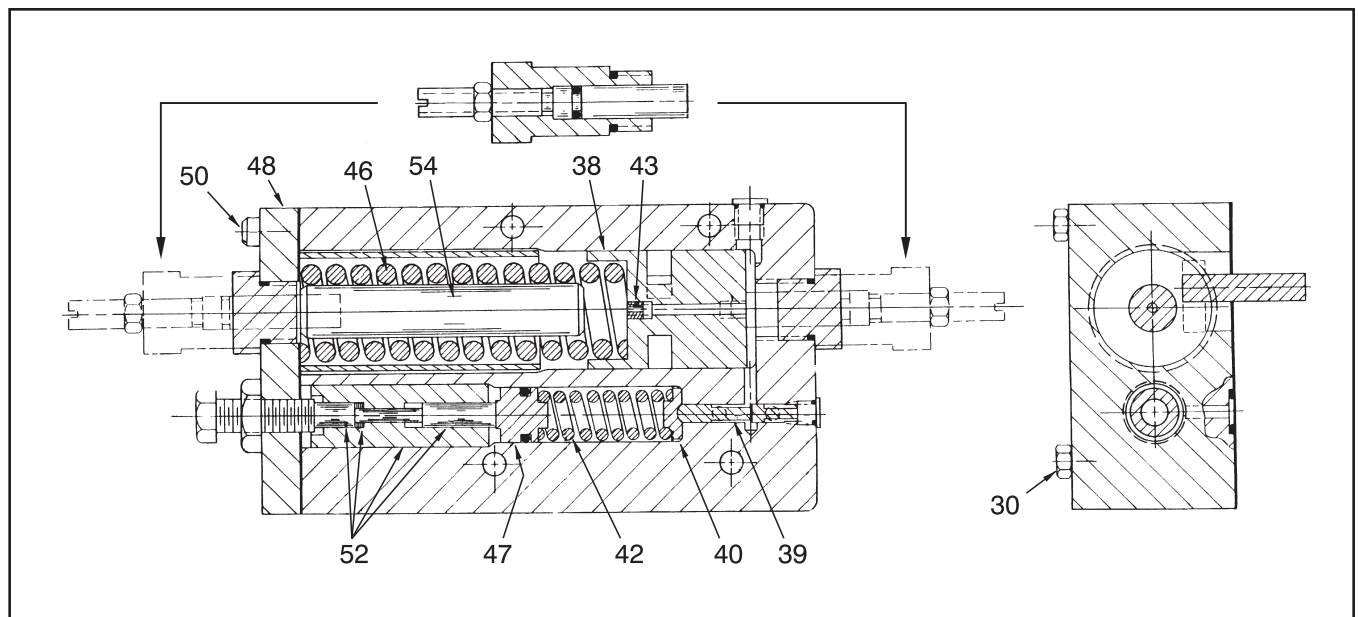


Figure 1: Pump Control