

Hydraulic In-Tank Return Filter

Maintenance Instructions

(Fairey Arlon Model IN-AGB, BGTS and TTF)

Start -Up

1. Check for and eliminate leaks upon system start-up.
2. Check differential pressure indicator (when equipped) to monitor element condition.

Service

1. An element must be serviced when the differential pressure indicator indicates service is required.

NOTE: If the filter is not equipped with a differential pressure indicator, the element should be serviced according to the maintenance schedule.

Servicing Dirty Elements

1. Shut the system down to ensure that there is NO PRESSURE OR FLOW in the filter housing.
2. Remove cover.
3. Remove insert (bridge that holds the element in place).
4. Remove the bypass spring assembly or non-bypass plate from the stud.
5. Remove contaminated cartridge with a twisting motion.
6. a. Discard disposable element cartridge.
6. b. Wash cleanable or mesh elements in a non-caustic solvent. Compressed air can be used to prevent damage to the element during cleaning.

Note: Elements finer than 150 micron (100 mesh) may require special ultrasonic cleaners. Consult factory for recommendations.

Before Installing Cartridge

1. Clean magnetic core with a lint free cloth.
2. Check all seals and replace if necessary.

To Install New or Recleaned Cartridge

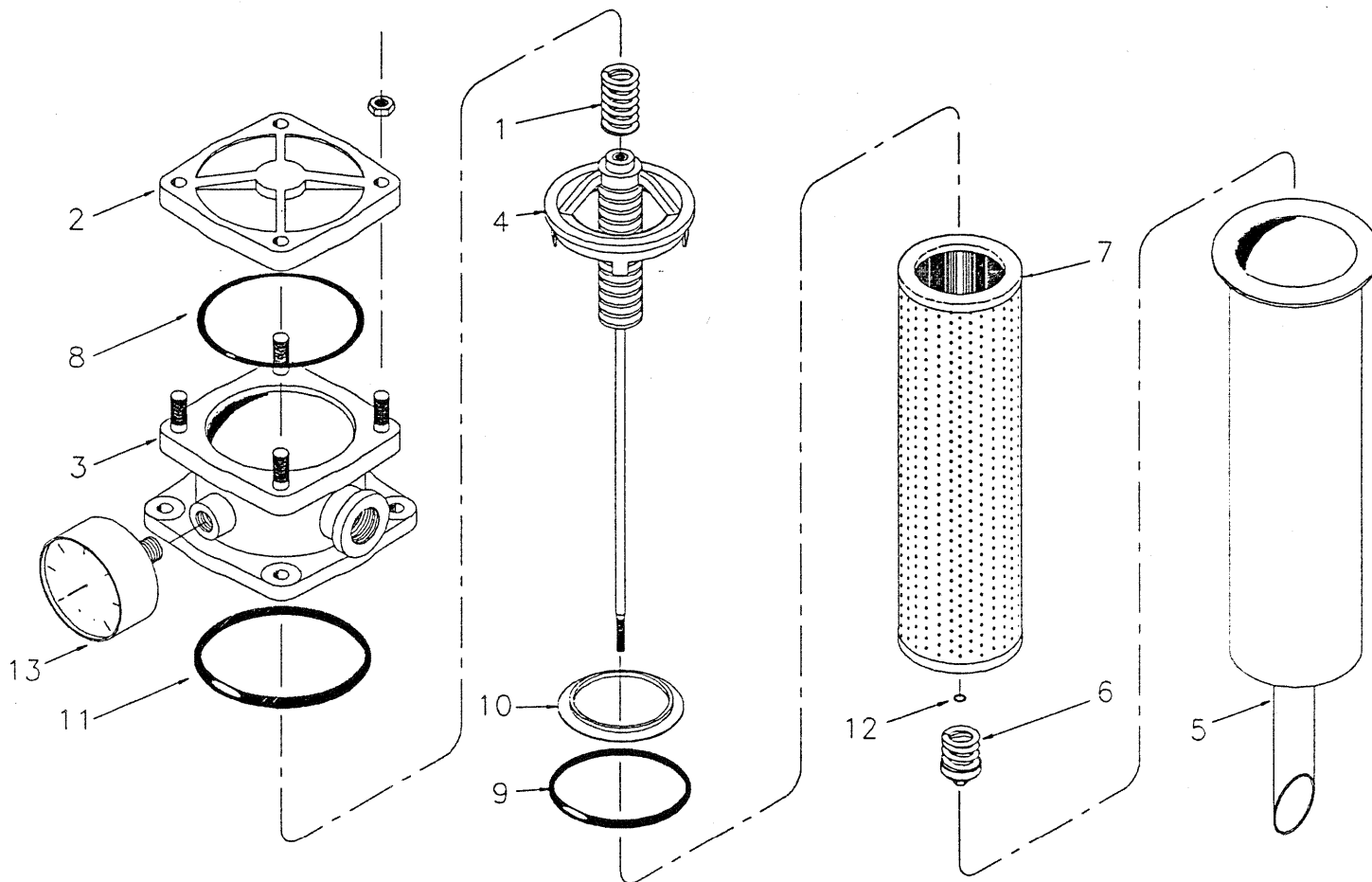
1. Lubricate all seals.
2. Mount new or recleaned filter cartridge.

NOTE: For ease of mounting, hold the cartridge away from the magnetic core until the stud is through the hole in the bottom of the element. Then slide it up to securely seat with the top of the bridge.

3. Install bypass spring assembly or non-bypass plate (tighten until snug).

NOTE: Older versions may have a cotter pin/castelled nut retained by bypass spring. In these cases, the nut should be turned down the shaft until the cross drilled hole is visible in the base of a castellation and cotter pin inserted and ends flared to lock the by-pass assembly in place.

4. Reinstall insert into housing (make sure the top spring is secure).
5. Reinstall cover. Torque cover nuts to 35 ft.lbs.
6. Follow procedure for **Start-up**.



Hydraulic In-Tank Return Filter (Typical)

Item	Description
	Hydraulic Filter
1	. Top Spring
2	. Cover
3	. Head
4	. Insert Assembly
5	. Diffusor
6	. Bypass Assembly
7	. Element

Item	Description
8	. O-Ring
9	. O-Ring
10	. Gasket
11	. Gasket
12	. O-Ring
13	. Pressure Gauge