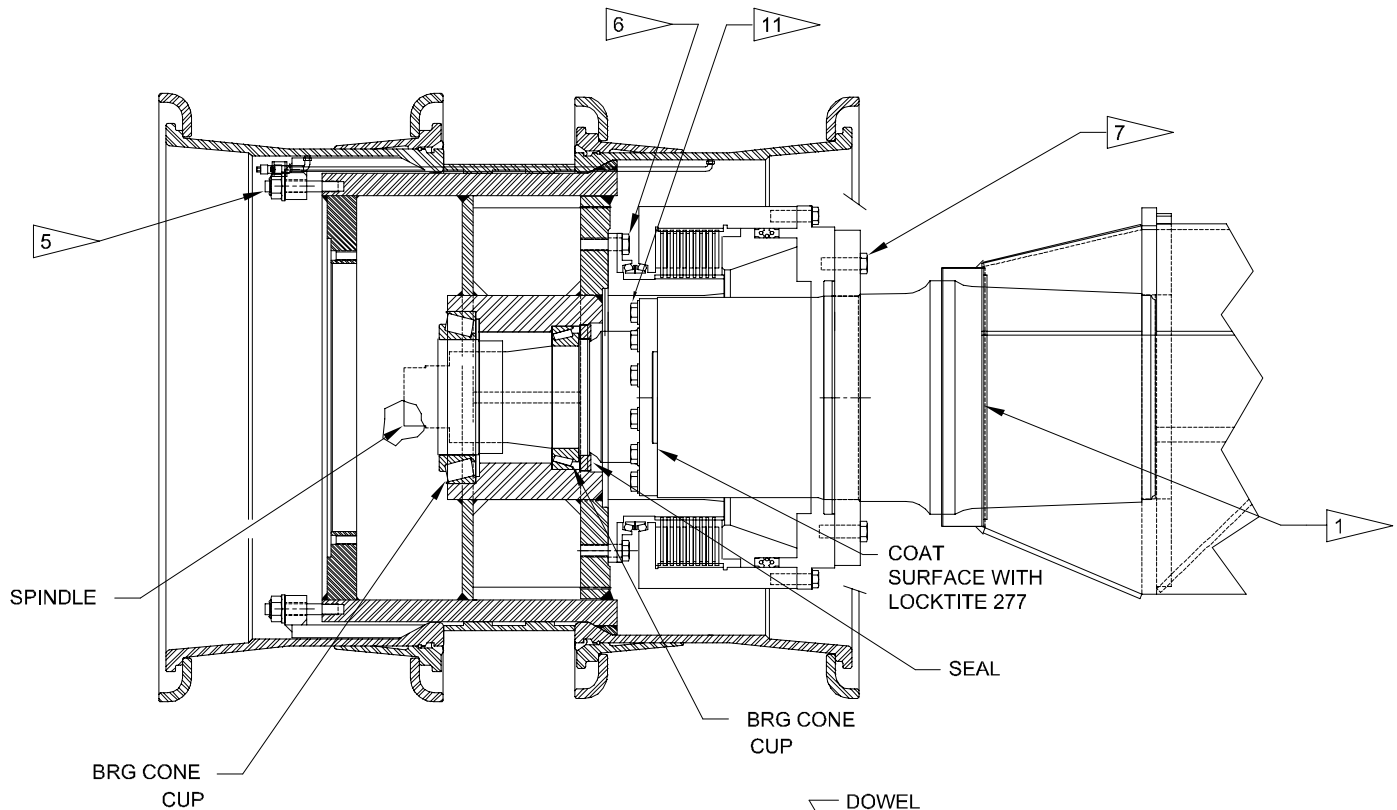


Front Axle Installation L80F Wet Disc Brake



NOTES:

- 1 WET DISK BRAKES (ITEM 1) IS SPLIT APART AT THE SEAL RING TO MOUNT THE SPLINE HUB ONTO THE WHEEL WELDMENT. THE OUTER PORTION OF THE BRAKE IS GENTLY SET BACK ONTO THE HUB, AND THE ENTIRE ASSEMBLY IS BOLTED INTO PLACE ON THE SPINDLE FLANGE.
- 2 ITEM 2, AXLE KIT CONTAINS ITEMS WHICH ARE REFERENCED BALLOONS, SEE CLARK AXLE INSTALLATION INSTRUCTIONS.
- 3 QUANTITIES SHOWN ARE FOR ONE SIDE ONLY.
- 4 DIFFERENTIAL AND CARRIER MUST BE MOUNTED WITH THE RING GEAR ON THE RIGHT HAND SIDE OF THE PINON (INPUT SHAFT) WHEN VIEWED FROM THE INPUT DRIVE YOKE.
- 5 TORQUE TO 300 FT/LB
- 6 TORQUE TO 475-500 FT/LB DRY
- 7 TORQUE TO 682-750 FT/LB DRY
- 8 ASSEMBLE DRY , TORQUE TO 240-264 FT/LB
- 9 USE LOCTITE 277 , TORQUE TO 128-141 FT/LB
- 10 USE LOCTITE 277, TORQUE STUD TO 50 FT/LB
- 11 TORQUE TO 925-1000 FT/LB DRY
- 12 NOT ALL CLARK DIFFERENTIALS WILL REQUIRE THE TAPERED DOWELS AS SHOWN IN SECTION A-A. IF THE DIFFERENTIAL DOES NOT HAVE (4) TAPERED HOLES, USE STUDS ONLY.

