

Radiator Fill Procedures

Inspect the coolant level daily. The sight gauge and radiator cap are on the right-side deck of the machine, next to the cab (See Figure 1). Cooling systems using anti-aeration baffles restrict visual observation of the true coolant level. Although the coolant can be seen, the system may not be full. To gain a true fill, add water slowly up to the bottom of the fill neck and allow a 30 second settling period. Remember to compensate for the loss of antifreeze when adding water.



WARNING

Never remove the radiator cap if the engine is hot. The coolant will be under pressure and could flash to steam with explosive force, causing severe burns. Remove the radiator cap only when the engine is cool.

NOTE: If the engine is hot, the coolant will be higher than when it is cold. Inspect the radiator daily for restriction caused by leaves, paper or bent fins. Inspect the radiator cap, hoses and connectors for any signs of leakage or damage.

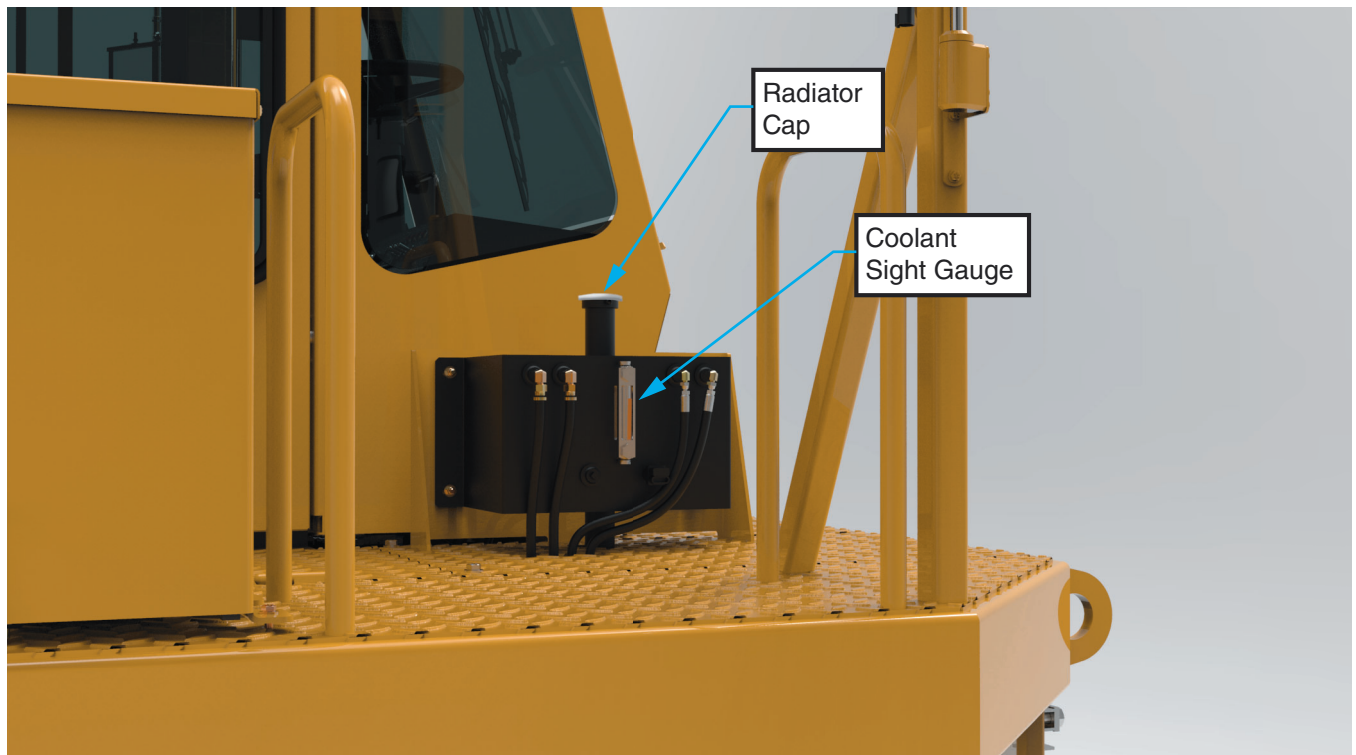


Figure 1 Radiator Cap and Coolant Sight Gauge, HLT185