

## Changing the DEF Pump Filter

Order service kit 259673 before beginning.



### CAUTION

**Wear gloves and protective eyewear while changing the filter element.**

1. Shut down the machine and employ lockout/tagout procedures
2. Clean the area around the horizontal cover plate on the left side of the chassis to prevent chips from falling into the DEF tank compartment. See Figure 1.

3. Remove the cover plate.
4. Wipe clean around the filter housing to prevent contamination.
5. Using a 46 mm socket, remove the filter housing.



### CAUTION

**There will be DEF fluid in the housing which may spill during removal. Always rinse spillage with lukewarm water to prevent corrosion. If DEF fluid seeps into electrical connections or electrical cables, these must be replaced.**

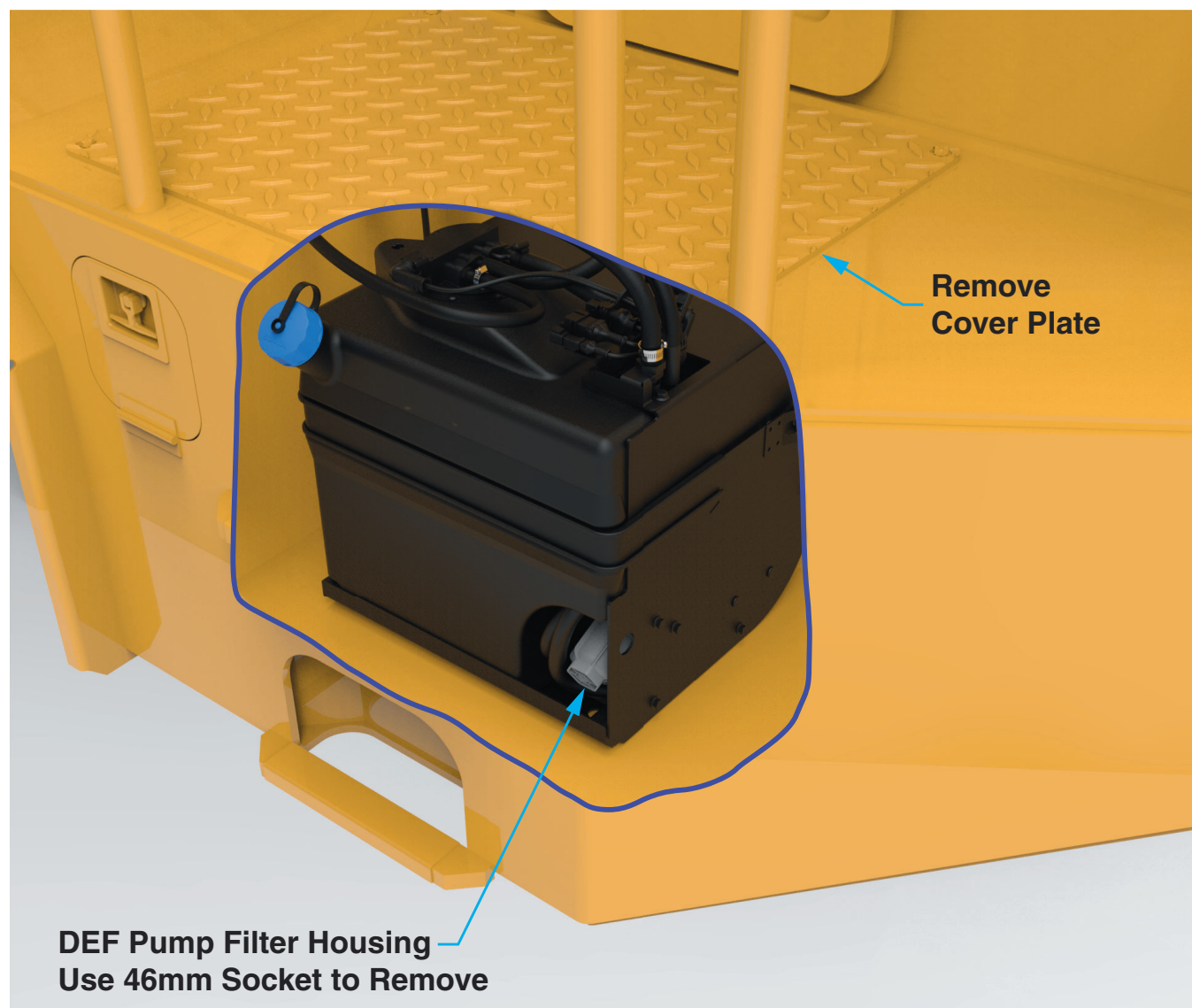
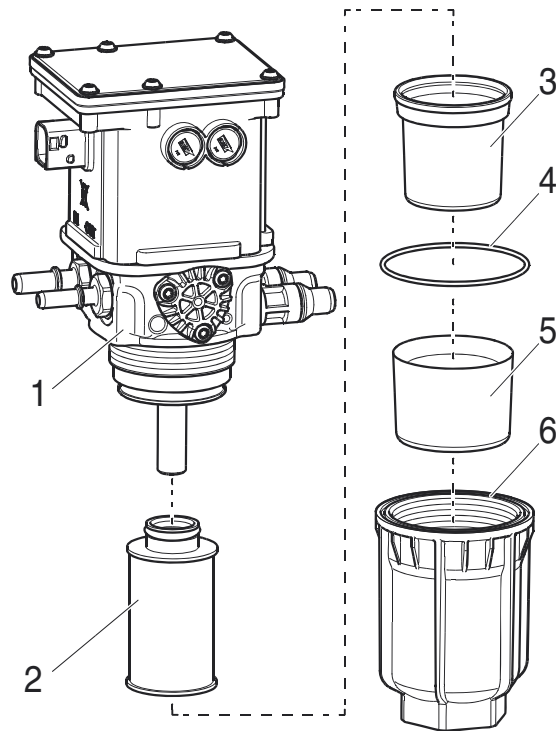


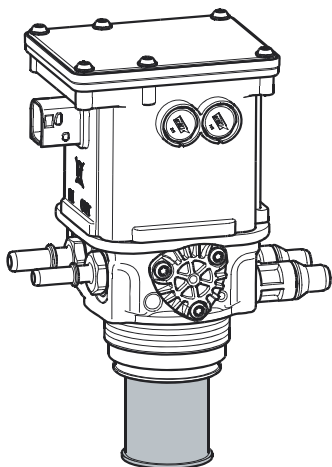
Figure 1 DEF Pump Filter Location

1. Pump.
2. Filter.
3. Sealing diaphragm.
4. O-ring.
5. Antifreeze protection.
6. Filter housing.

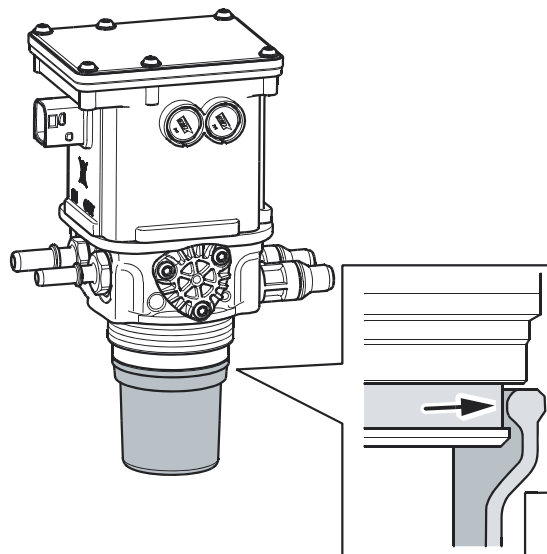


*Figure 2 DEF Pump Filter*

6. Remove the sealing diaphragm. See Figure 2.
7. Remove the filter and discard in accordance with local regulations.
8. Install the new filter. See Figure 3.
9. If the anti-freeze protection in the filter housing comes loose, wipe both the anti-freeze protection and filter housing thoroughly so that they are completely dry before they are assembled again.
10. Wipe the sealing diaphragm and fit it over the filter.
11. Ensure that the edge of the diaphragm is sitting in the groove. See Figure 4.



*Figure 3 Install New Filter*



*Figure 4 Sealing Diaphragm*

12. Lubricate the sealing diaphragm and threads with the accompanying spray. See Figure 5.

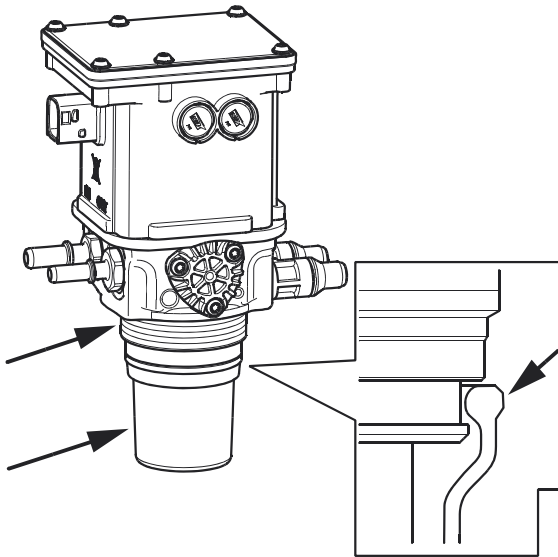


Figure 5 Lubricate Diaphragm and Threads

14. Reinstall the filter housing. See Figure 7. Use a 46 mm socket. Tighten to 59 lb-ft (80 Nm).

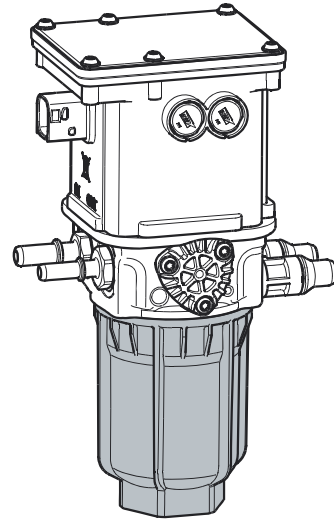


Figure 7 Replace Filter Housing

13. Replace the O-ring in the filter housing. See Figure 6.

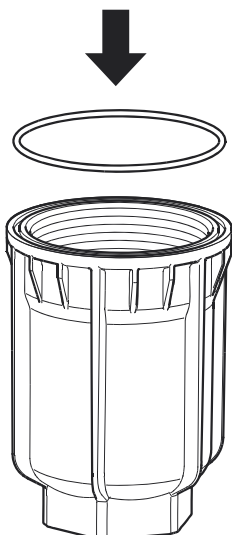


Figure 6 Replace O-Ring