

Service Position

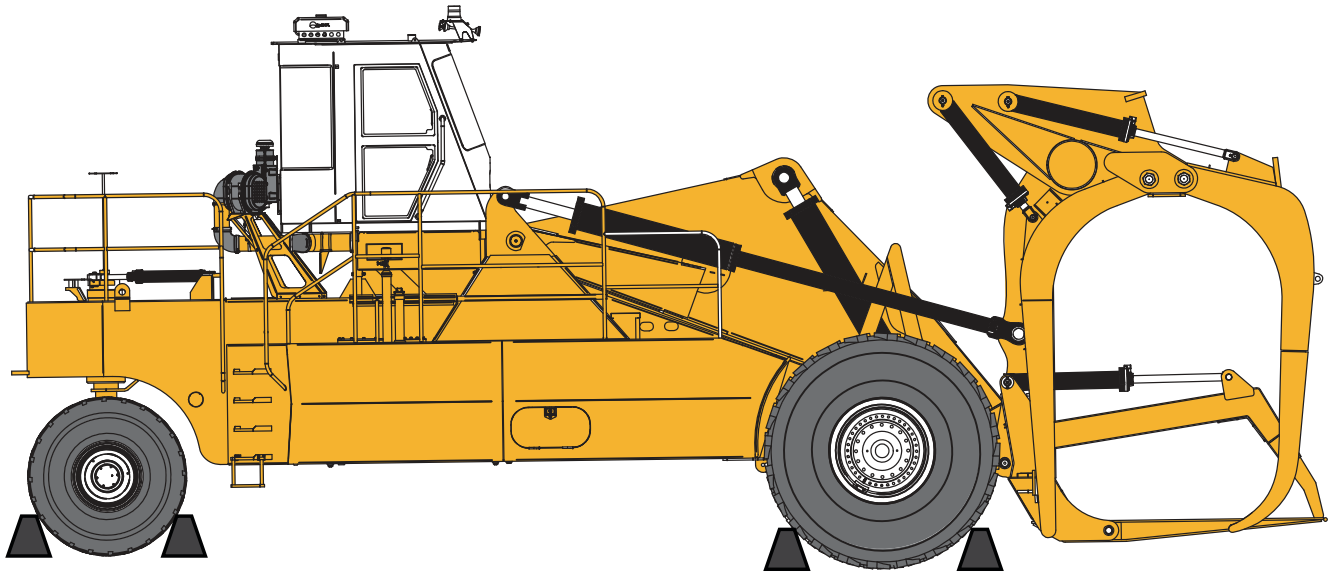
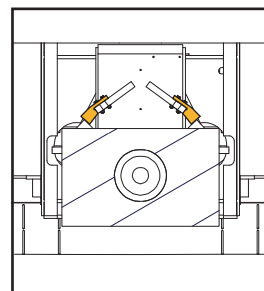


Figure 1 Service Position (L90S Shown)

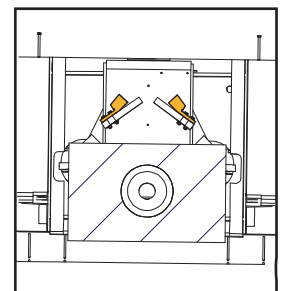
General

To ensure the safety of all personnel, all maintenance and service work must be performed with the machine in the Service Position. See Figure 1.

1. Park the machine on level ground.
2. On 4WD machines, align the bogie with the chassis.
3. Engage the parking brake.
4. Lower the boom and adjust the tilt angle so that the carriage tines rest on the ground.
5. Retract the kickoff arms.
6. Lower the holddown arms so that the tips either touch the ground, or the cylinders are fully extended.
7. If so equipped, lower the auxiliary holddown arms so that the tips either touch the ground, or the cylinders are full extended.
8. Stop the engine.
9. Tag key switch “DO NOT START” and follow your company’s Lockout Procedure to ensure that the engine is not inadvertently started.
10. Block the tires to keep the machine from rolling.
11. On 4WD units, engage the oscillation locks if the maintenance or service requires that any part of the machine be lifted. See Figure 2.



Locked



Unlocked

Figure 2 Oscillation Locks (4WD Machines only)

INTENTIONALLY LEFT BLANK