

# Hydraulic Tank Service Instructions

## General

The hydraulic tank for the L60 Logstacker is just to the rear of the right side service bay. Checking the oil level is easy with the sight gauge (See Figure 1), visible even when the service bay doors are shut.

## Daily Check

The sight gauge should be checked daily. With the machine in the park position (See Operator's Manual) and the engine off, the hydraulic oil level should be visible in the sight gauge.

## Topping Off

If the hydraulic oil level is low, open the petcock at the breather to relieve pressure, and add filtered hydraulic oil through the quick connect fill port (See Figure 1) until the oil level is seen in the upper half of the sight gauge. Once the oil level has stabilized, close the petcock and clean up any spills. See Fluids and Capacities in Section 10-1 for approved hydraulic oil.



## CAUTION

**Never overfill the hydraulic tank. The machine must be in the park position when filling. Too much hydraulic oil in the system will cause equipment damage, and may cause injury.**

## NOTICE

*If the hydraulic oil is low, investigate the cause. Check for leaky connections, ruptured hoses, etc, and correct before returning the machine to service.*

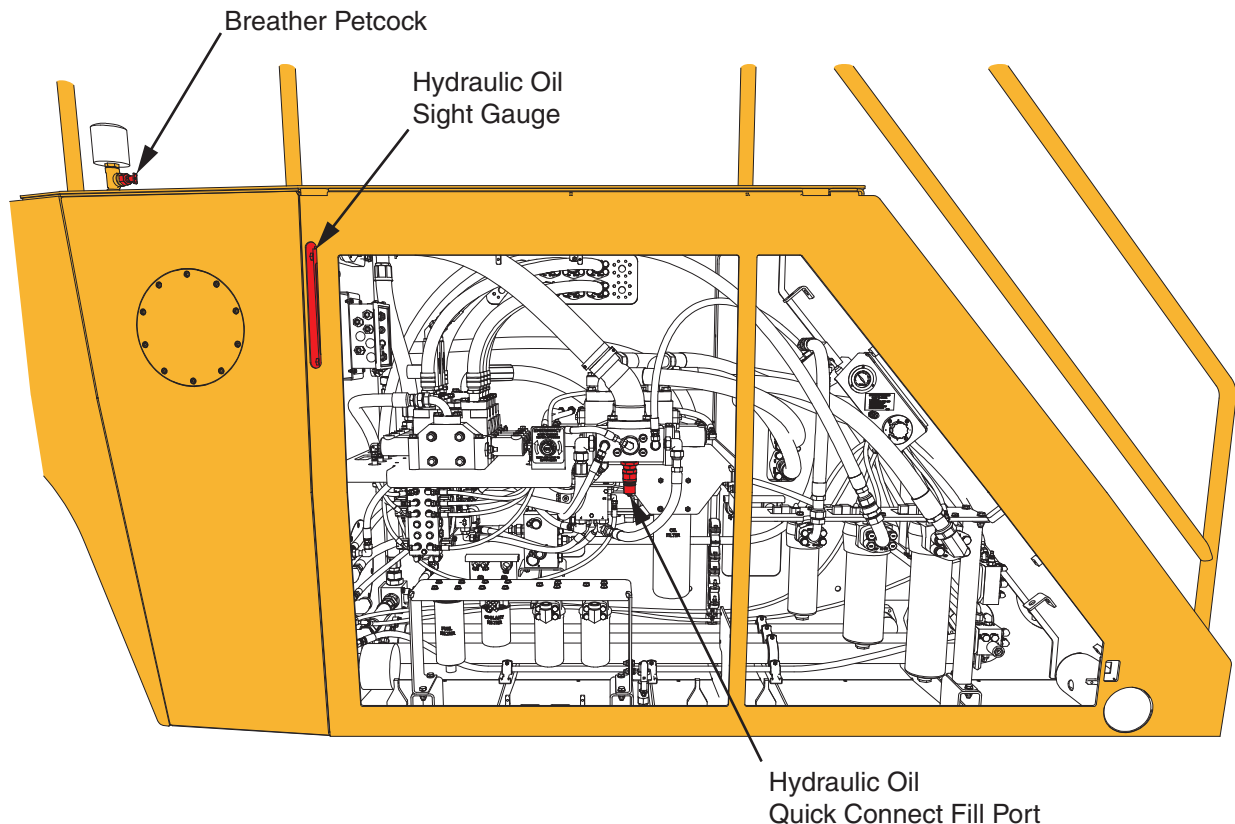


Figure 1 Right Side Service Bay

## Oil Sampling

A sample of the hydraulic oil should be taken and analyzed whenever the hydraulic filters are replaced. Hydraulic oil filters (high pressure and/or return filters) are replaced quarterly, after 500 hours of operation, or as indicated by the filter lights, whichever occurs first. See operator's manual for criteria and methods of filter replacement.

The hydraulic oil should be replaced annually, after every 2000 hours of operation, or whenever oil analysis indicates that the oil is at the end of its service life, whichever occurs first.



## WARNING

Hydraulic oil is extremely hot while the machine is running, and may cause severe burns or death upon contact. Shut down the machine, employ lockout/tagout procedures, and allow the machine to cool. Wear appropriate personal protective equipment when changing hydraulic oil or filter elements.

## Draining the Tank

The hydraulic tank on the L60 holds approximately 200 gallons (757 liters) of hydraulic oil. Have containers available to contain that quantity.

With the oil cool, lockout/tagout procedures in effect, and the machine in the park position, open the petcock at the breather to relieve pressure. Remove one or both drain plugs at the bottom of the hydraulic tank (see Figure 2) and direct the oil into suitable containers.

When empty (allow the tank to fully drain), reinstall the drain plug(s), dispose of the used oil, and clean up any spills.

## NOTICE

*Used oil must be disposed of according to local, state, or national regulations as applicable.*

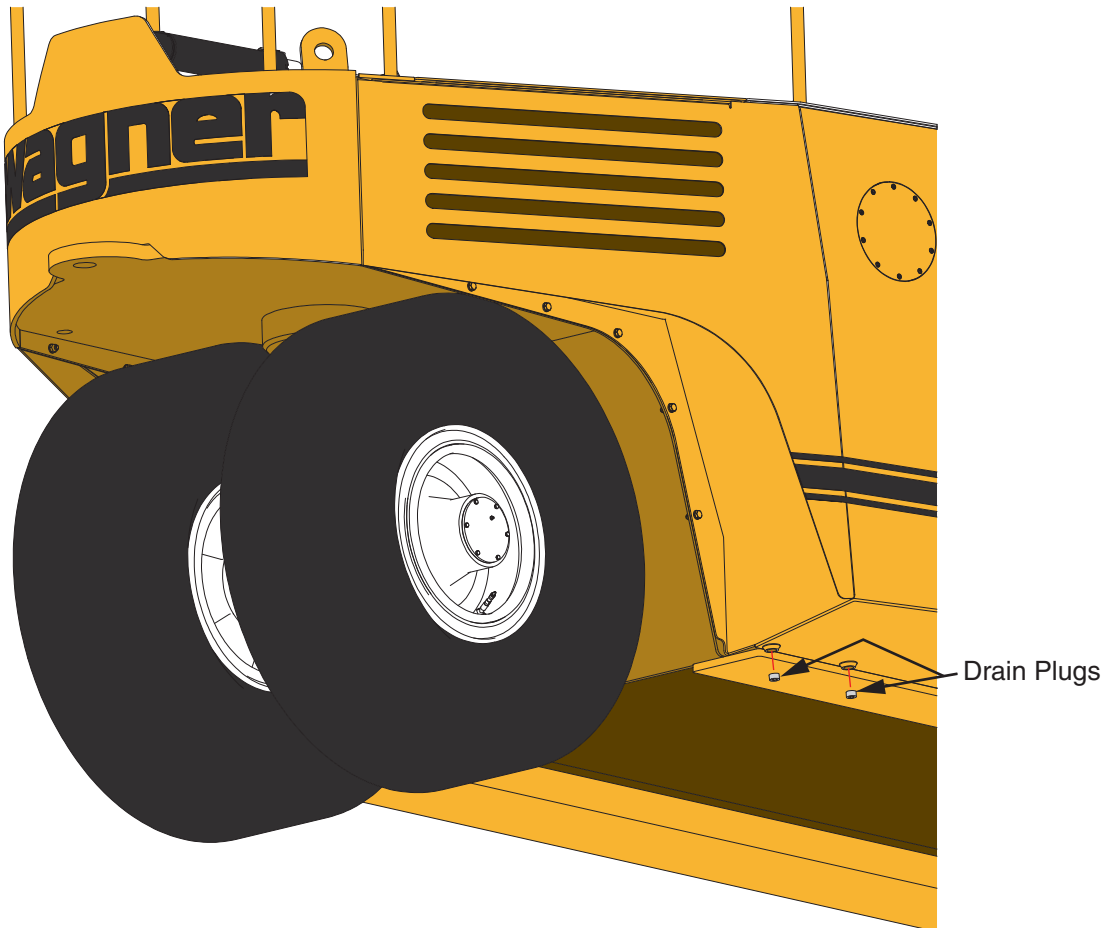


Figure 2 Hydraulic Tank Drain Plugs

## Cleaning the Tank

Once the oil is drained, the two clean-out covers may be removed (see Figure 3 and Figure 4). Disconnect hoses as necessary to gain access to the clean-out cover in the service bay. Collect all oil that drains from disconnected hoses.

With the clean-out covers removed, the hydraulic tank may be cleaned. With a lint-free rag, clean the reservoir of all sludge and deposits.

Remove the magnet at the bottom of the tank. Access the magnet from the clean-out access hole in the service bay. Clean and return the magnet to the bottom of the tank.

## Refilling the Tank

Install new return filter elements, and reinstall the clean-out covers and the return filters cover with new gaskets and O-rings. Torque the capscrews to the values shown in the torque chart in Section 10.

Check that the drain plugs are installed and do not leak, and the breather is open.

Fill at the hydraulic oil quick connect fill port with approximately 200 gallons of hydraulic oil, until the oil level is seen in the upper half of the sight gauge. See Fluids and Capacities in Section 10-1 for approved hydraulic oil. Once the oil level has stabilized, close the petcock and clean up any spills.

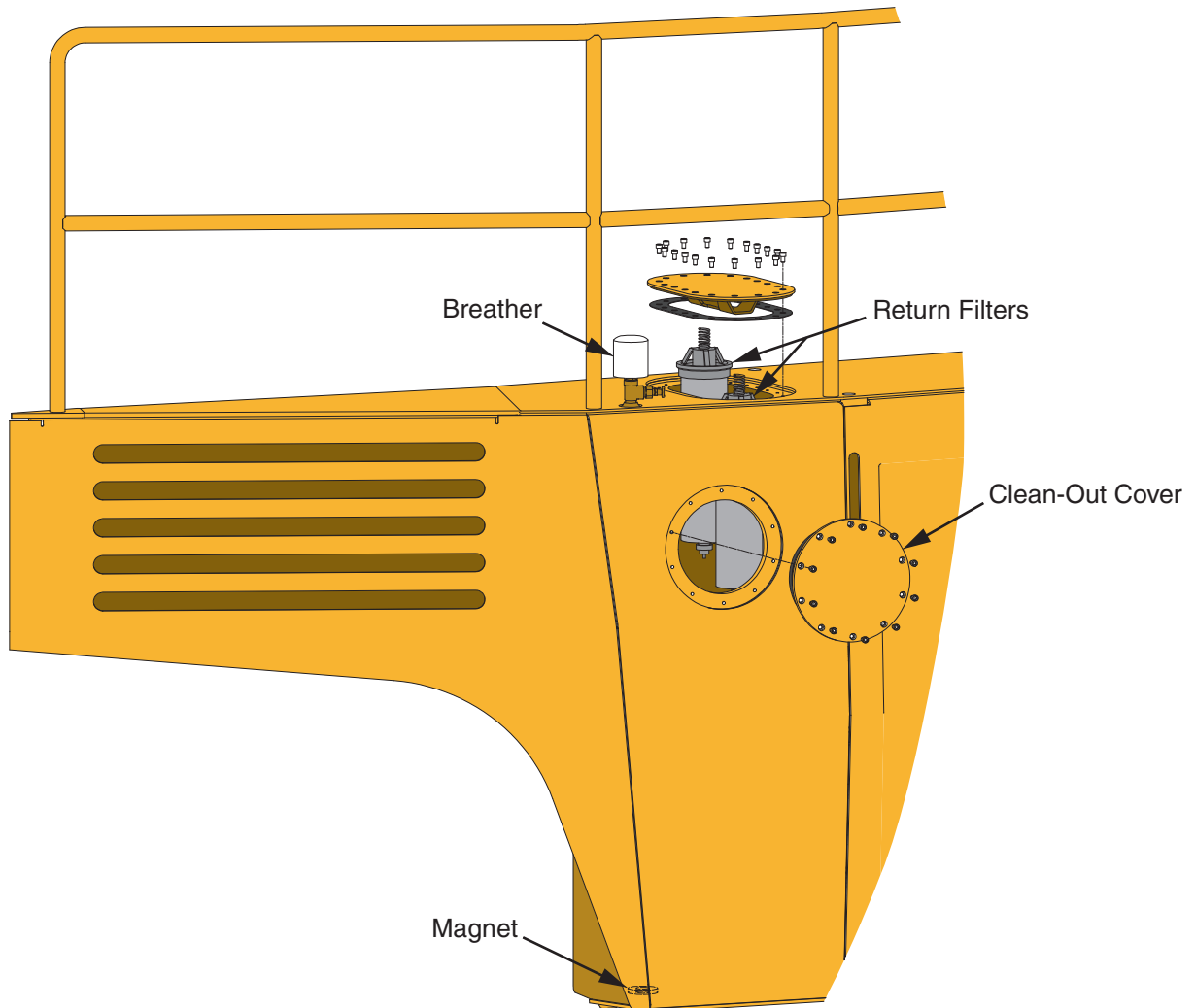
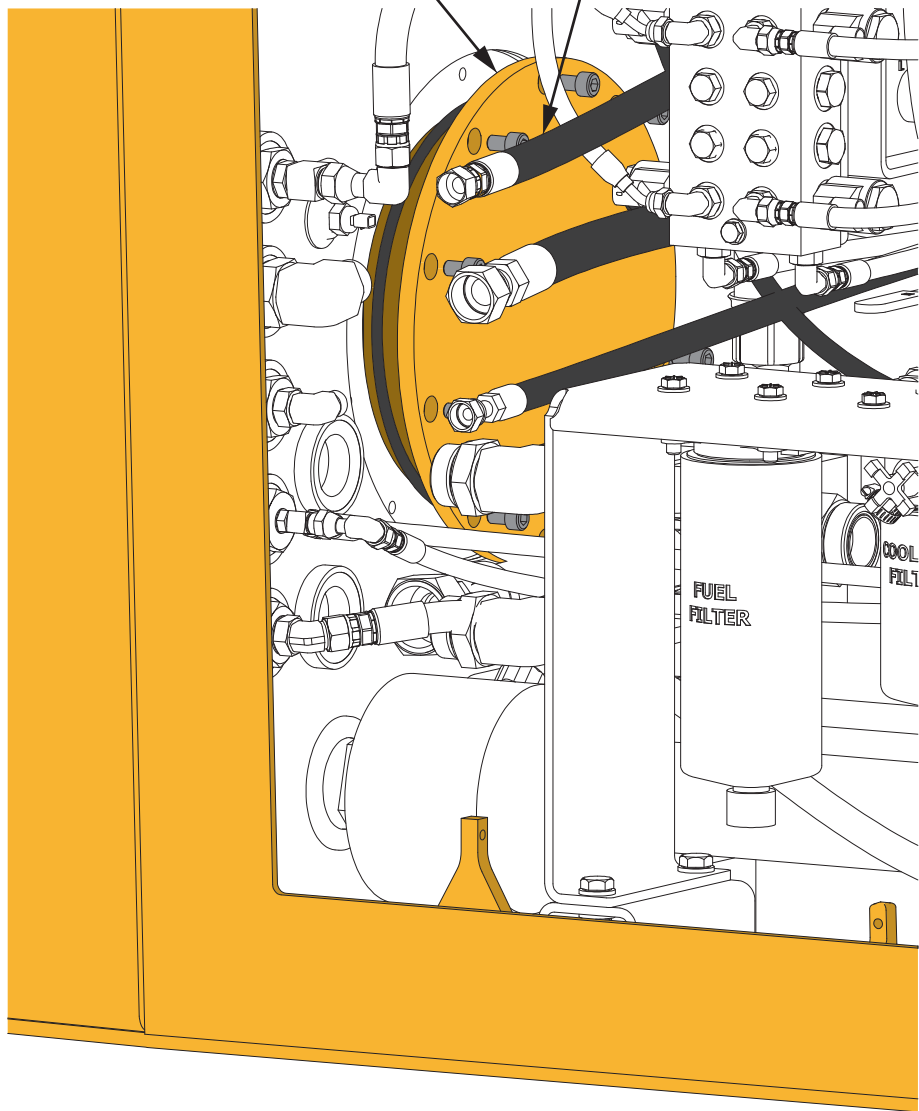


Figure 3 Hydraulic Tank Clean-Out

Clean-Out Cover, Inside Service Bay

Disconnect hoses as necessary



*Figure 4 Hydraulic Tank Clean-Out Inside Service Bay*