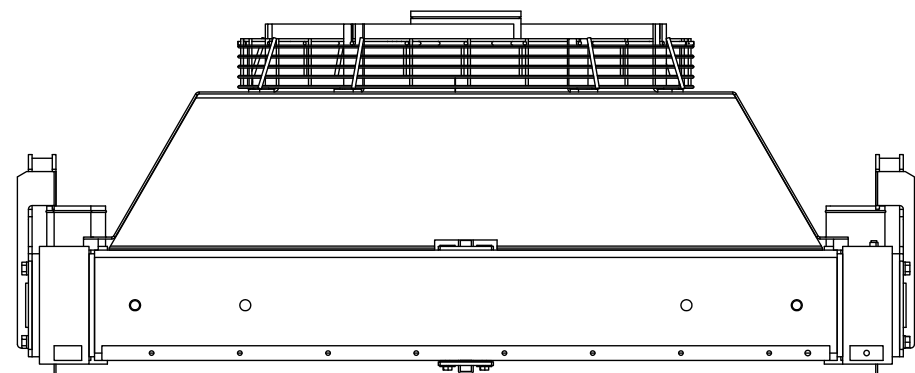
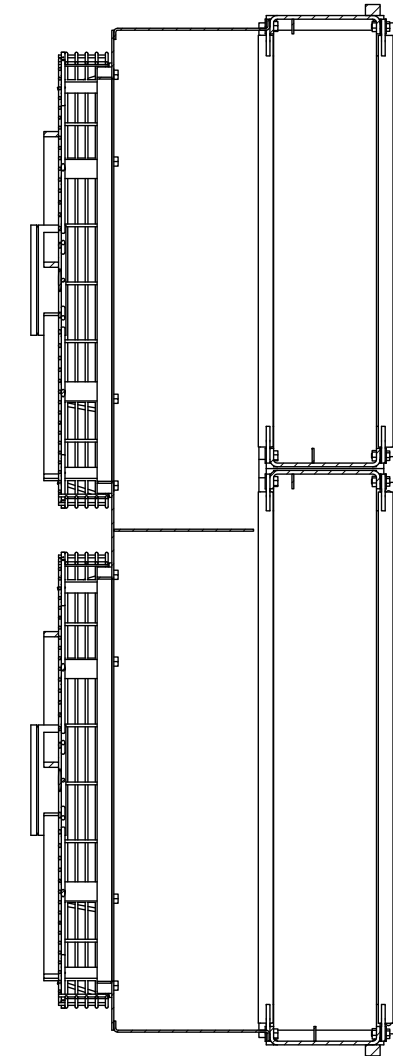
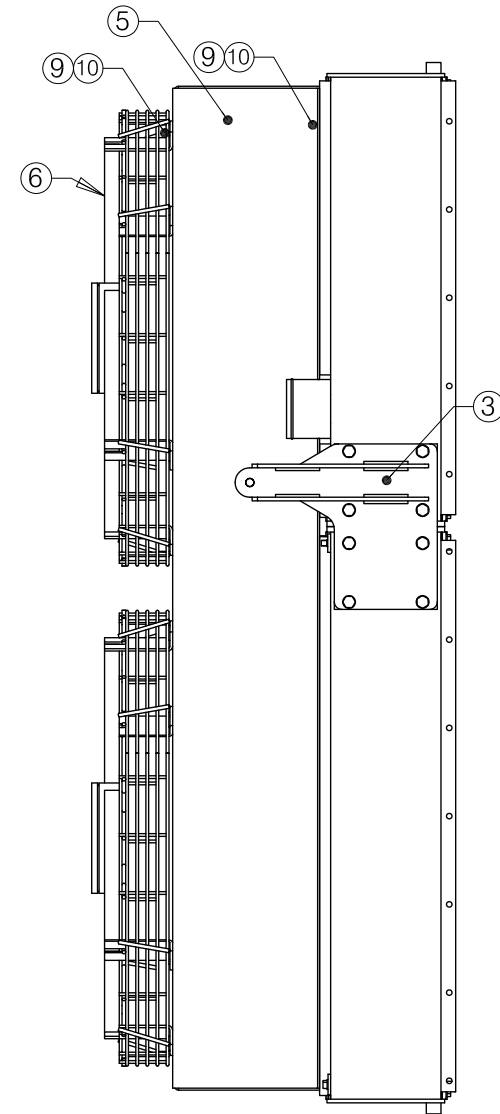
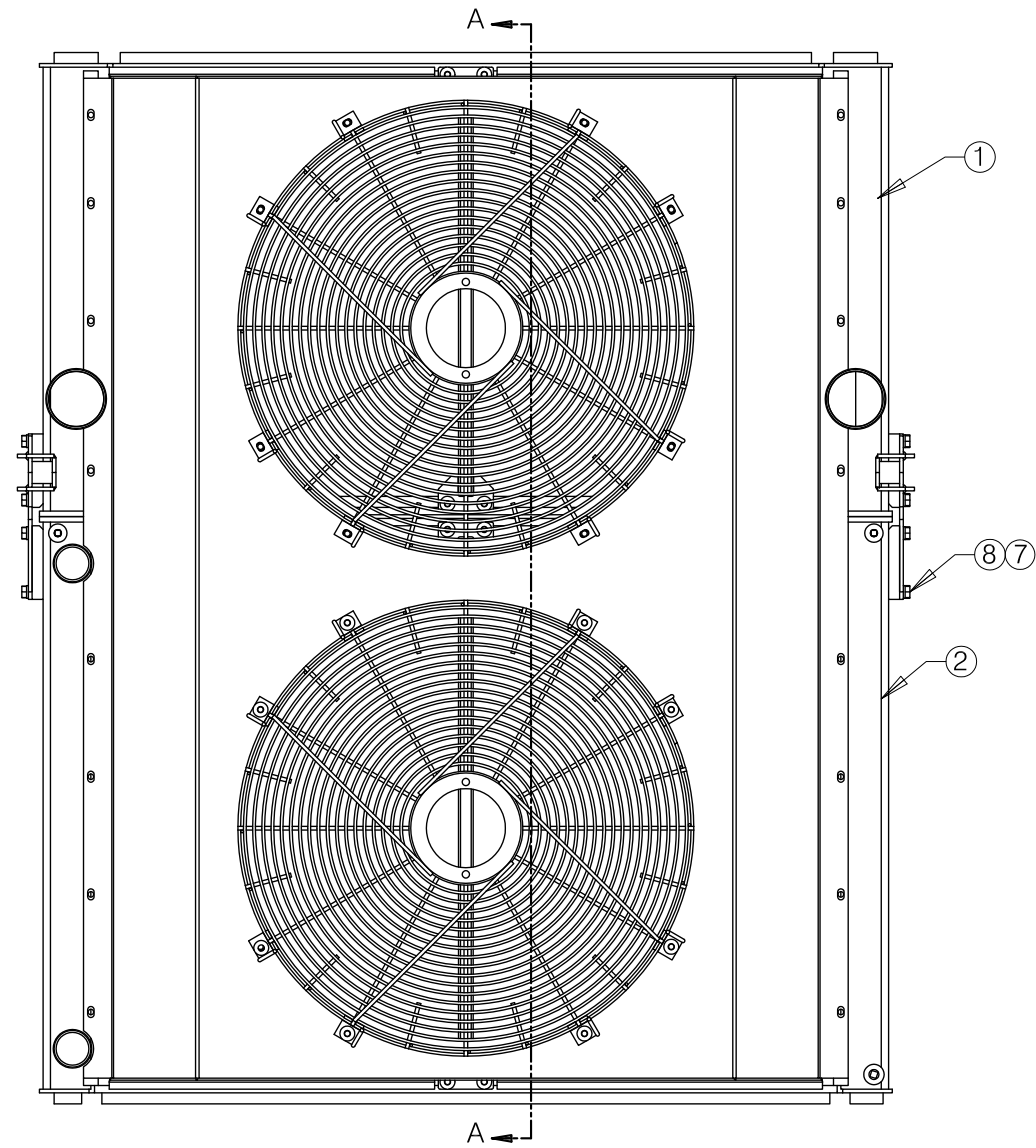
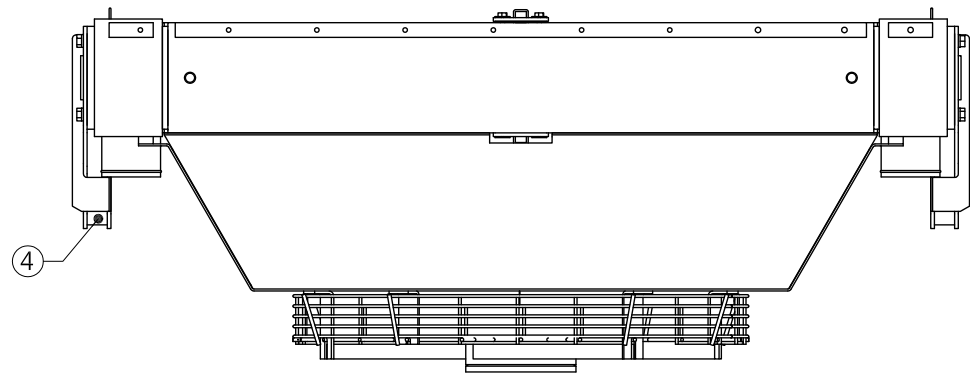
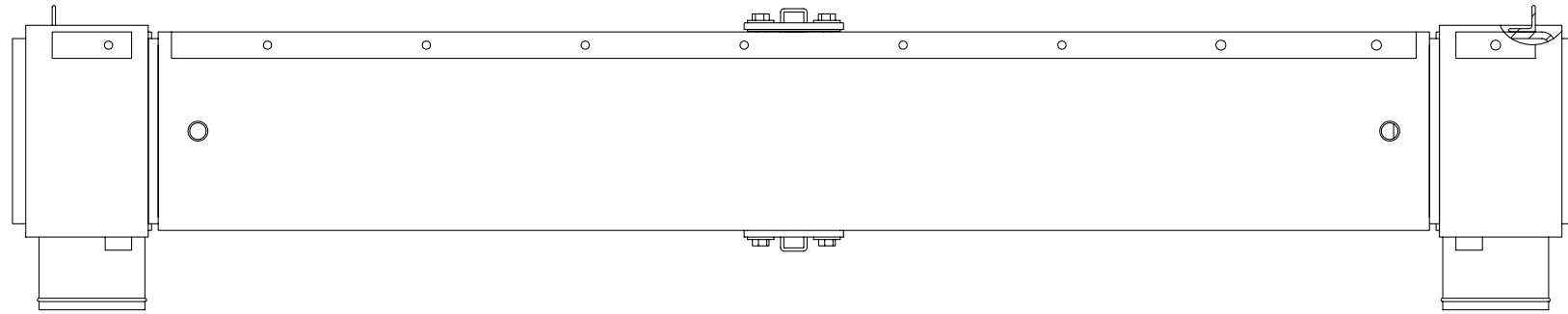

Cooler Assembly

Cooler Assembly

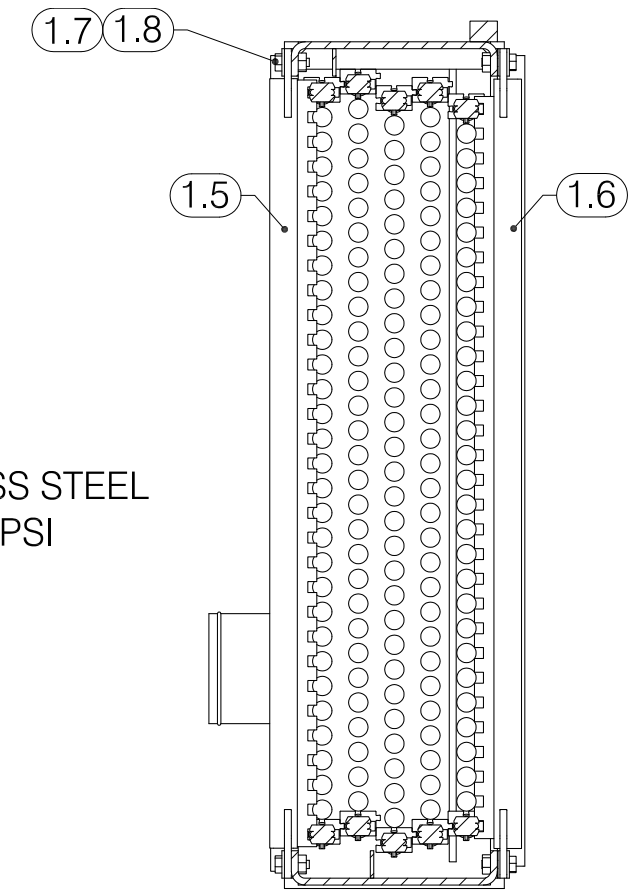
Item	Part No.	Qty	Description	Item	Part No.	Qty	Description
	253909		Cooler Assembly				
1	254710	1	Aftercooler, Mesabi	2.8	250674	8	. Capscrew
1.1	254711	1	. Aftercooler Frame	2.9	254721	1	. Plug
1.2	226664	154	. Grommet	2.10	253950	2	. Plug
1.3	226663	154	. Grommet	2.11	231103	1	. Air Baffle, Bottom, Felt
1.4	254709	154	. Tubes, V-Fin, ITS	2.12	231102	1	. Air Baffle, Top, Felt
1.5	254712	1	. Support Bar	3	256581	1	Bracket
1.6	254713	1	. Support Bar	4	256582	1	Bracket
1.7	250685	8	. Flat Washer	5	254723	1	Fan Shroud
1.8	250674	8	. Capscrew	6	254724	2	Fan Guard, Standard
1.9	254714	1	. Air Baffle, Top, Felt	7	254725	24	Lockwasher
1.10	254715	1	. Air Baffle, Bottom, Felt	8	254726	24	Capscrew
2	254716	1	Radiator, Mesabi	9	250685	32	Flat Washer
2.1	254717	1	. Radiator Frame	10	250674	32	Capscrew
2.2	254718	1	. Support Bar	11	254098	1	Surge Tank Assembly
2.3	254719	1	. Support Bar	11.1	256583	1	. Surge Tank
2.4	250669	199	. Seal, Locking	11.2	249639	1	. Sight Gauge Assembly
2.5	250670	199	. Seal, Rubber	11.3	250147	1	. Radiator Cap
2.6	254720	199	. Tubes, V-Fin, ITS	11.4	250682	1	. Hose, Overflow
2.7	250685	8	. Flat Washer	11.5	250683	3	. Clip, Hose



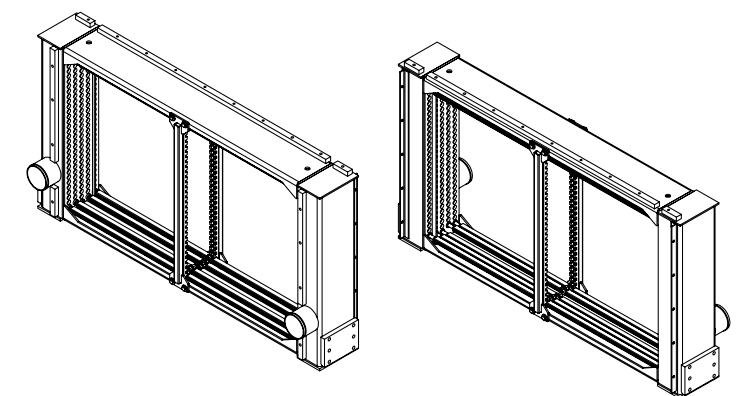
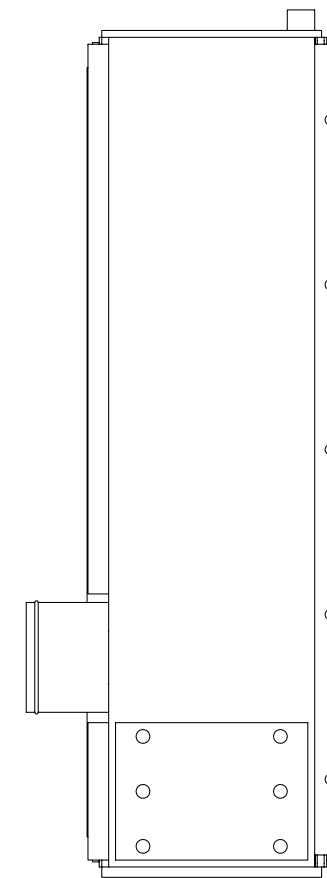
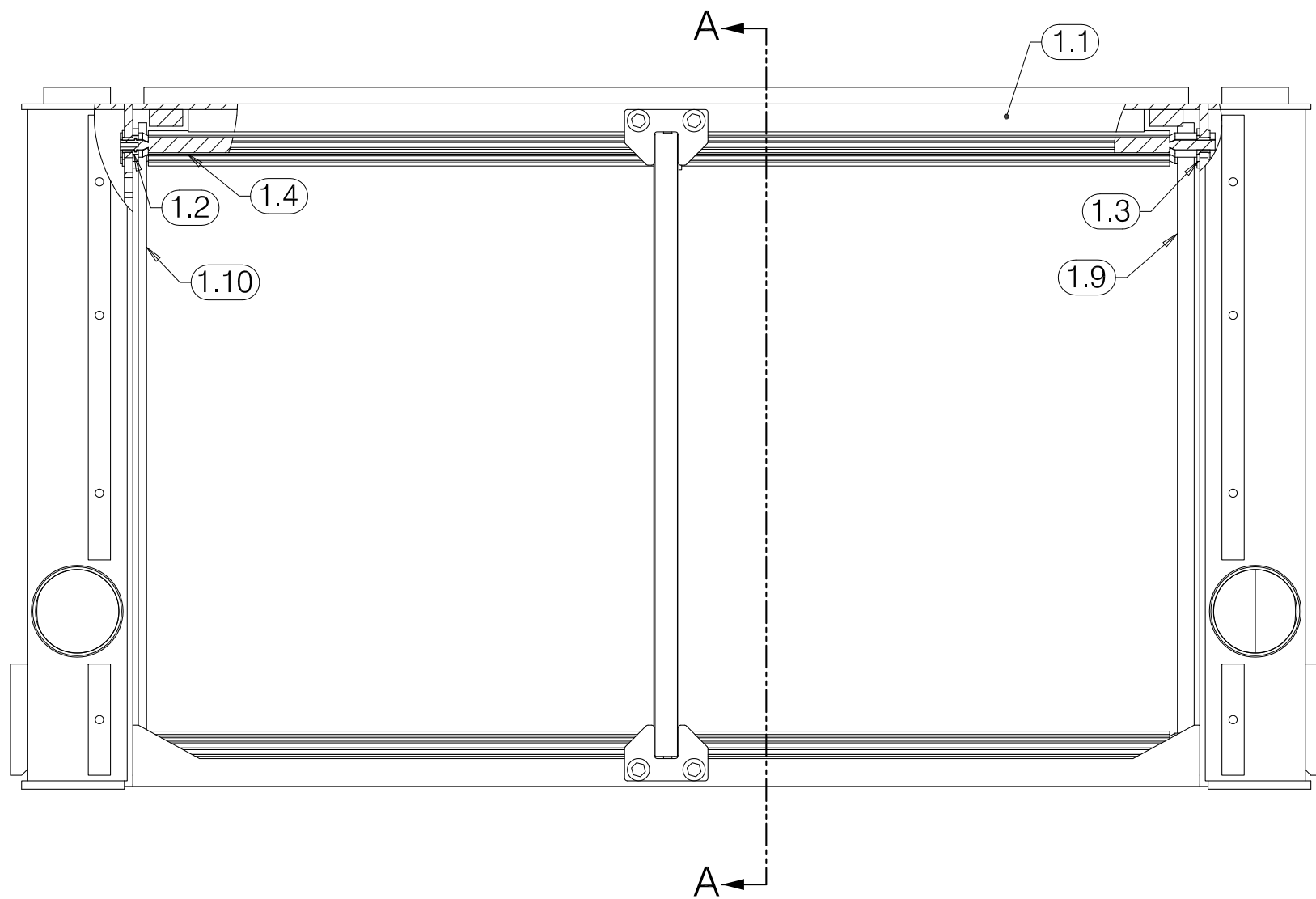
- NOTE:
- 1)AFTERCOOLER SECTION STAINLESS STEEL
 - 2)RADIATOR SECTION MILD STEEL
 - 3)RADIATOR MAX PRESSURE 50PSI
 - 4)AFTERCOOLER MAX PRESSURE 50PSI
 - 5)RADIATOR 2 PASS CORE

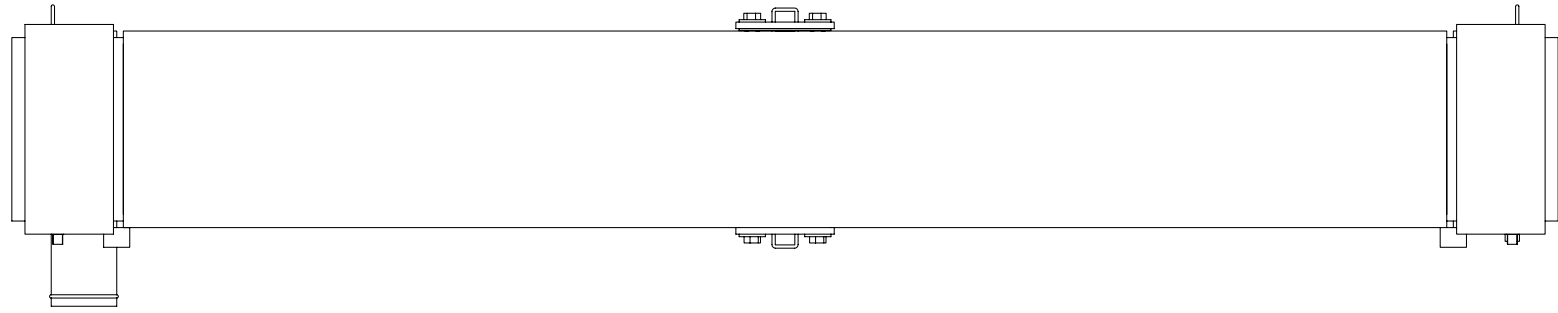


NOTE:
1)AFTERCOOLER SECTION STAINLESS STEEL
2)AFTERCOOLER MAX PRESSURE 50PSI

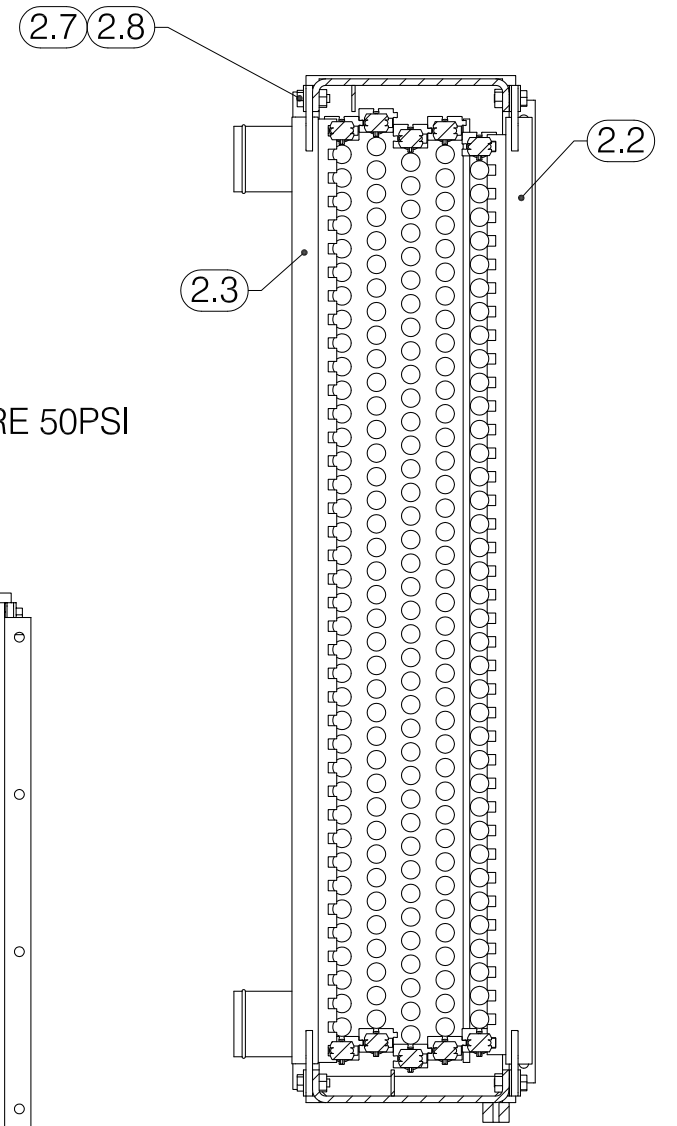
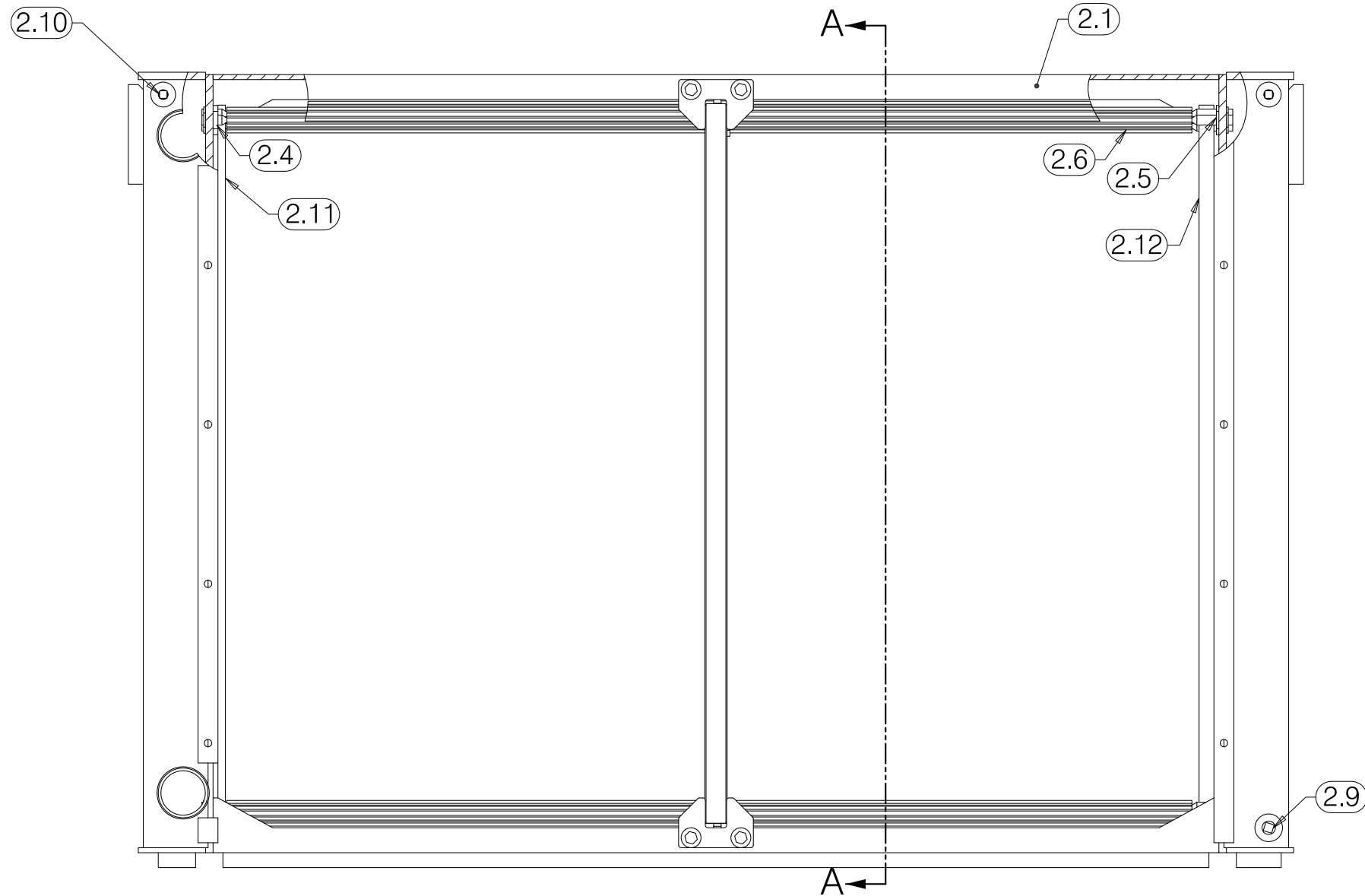


SECTION A-A

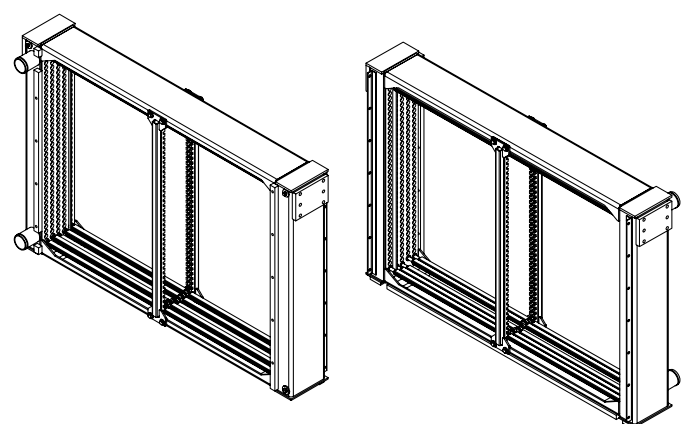
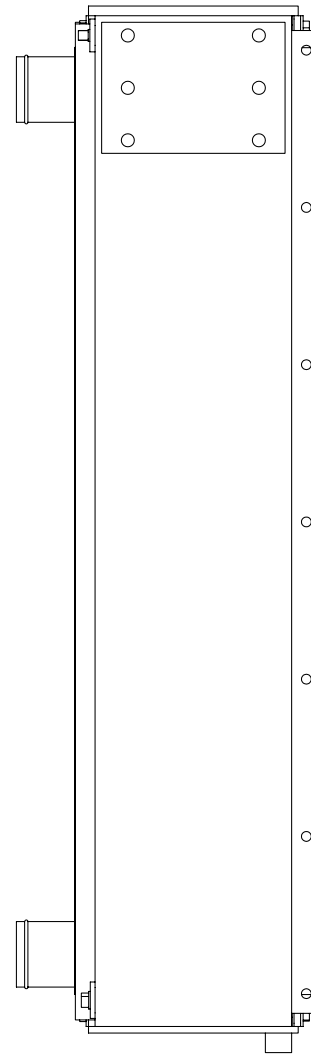


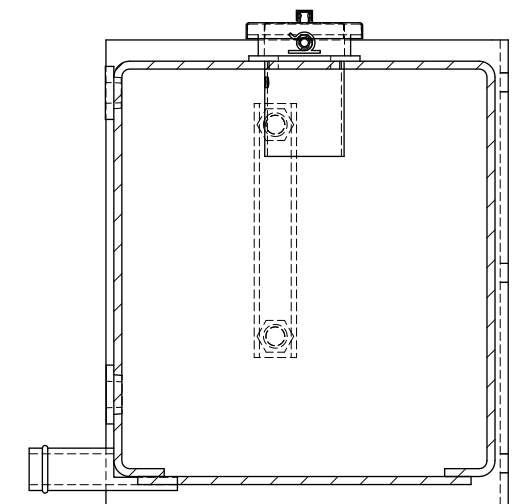
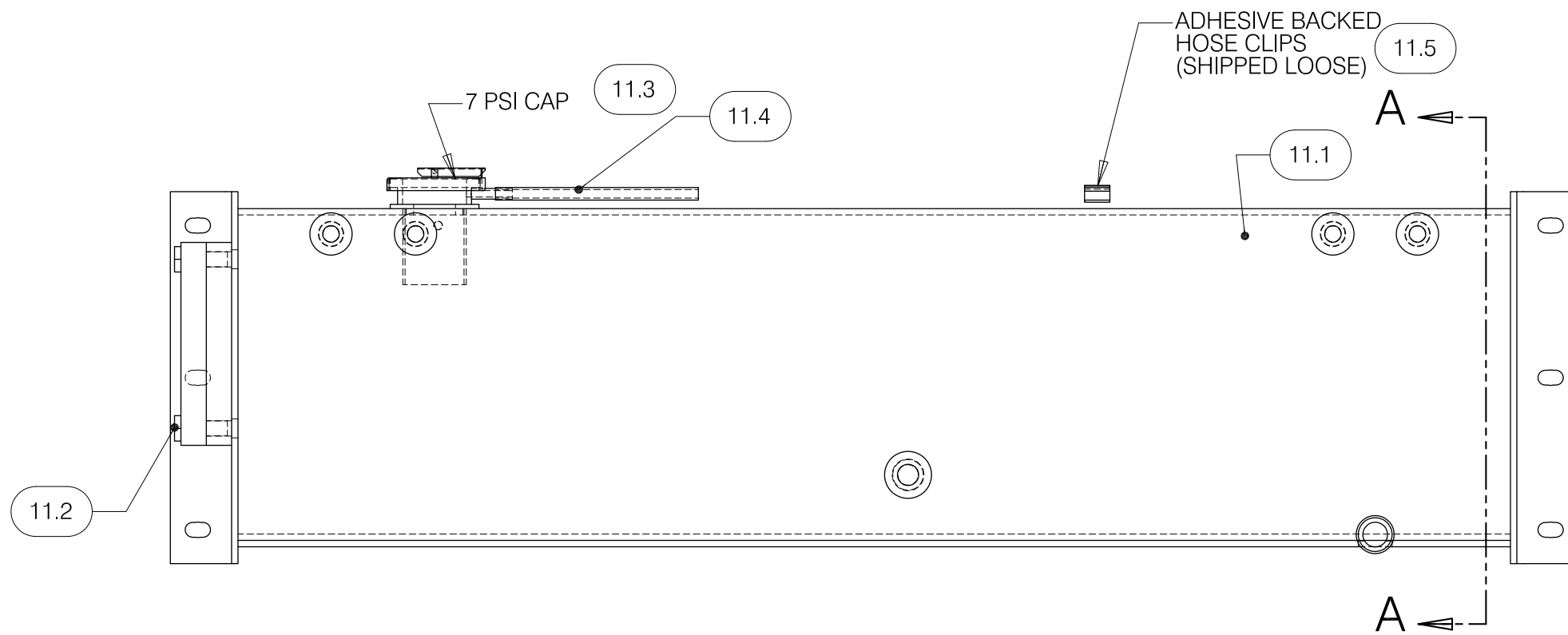
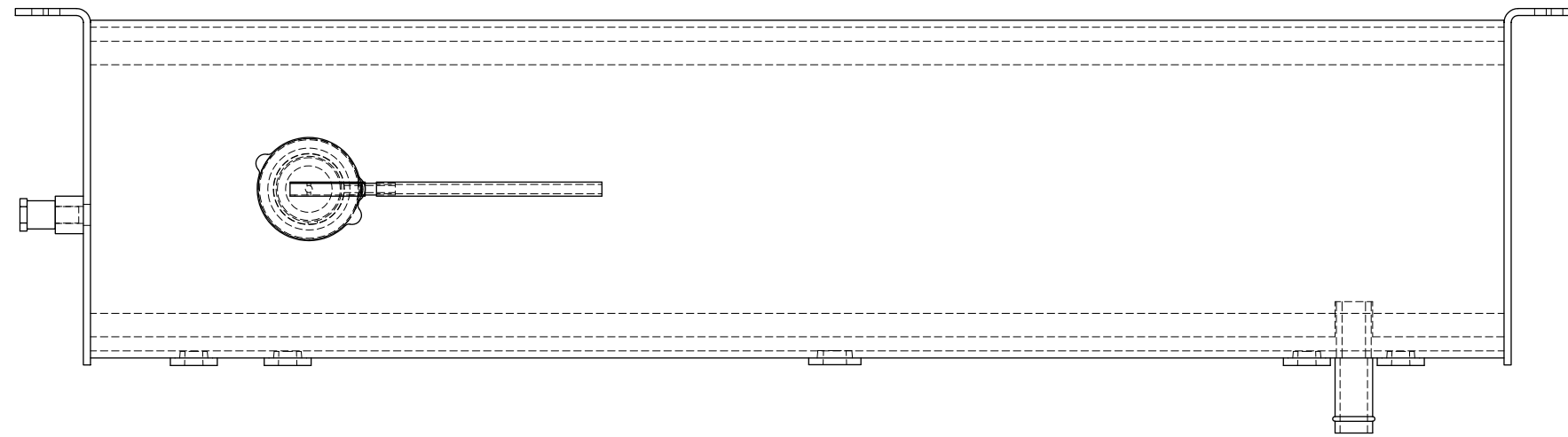


NOTE:
1) RADIATOR MAX PRESSURE 50PSI
2) RADIATOR 2 PASS CORE



SECTION A-A





SECTION A-A