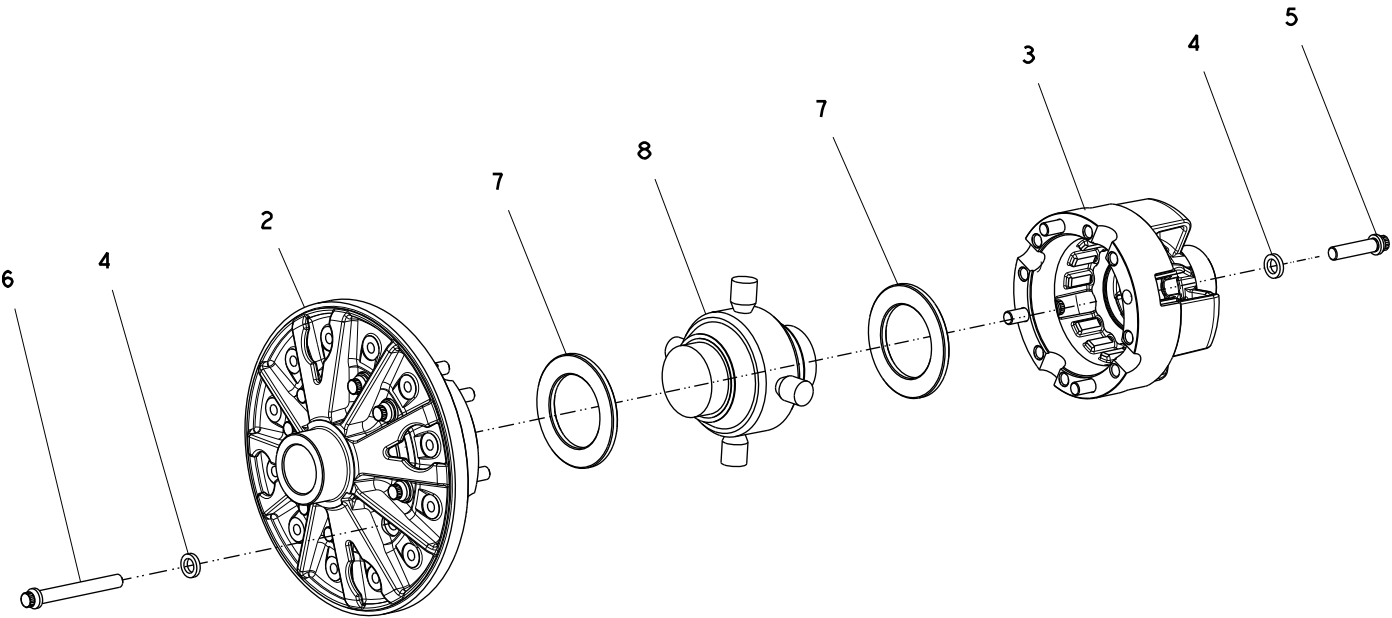


Differential Body Subassembly



Item	Part No.	Qty	Description	Item	Part No.	Qty	Description
<b>251510</b>				<b>Diff Body Subassembly</b>			
2	*a NSS	1	. Case, Flanged Half	6	*a 238862	8	. Capscrew
3	*a NSS	1	. Case, Plain Half	7	251509	2	. Spacer, Diff
4	*a 224724	12	. Washer	8	224725	1	. No-Spin Unit
5	*a 238853	4	. Capscrew				
*a Included in 238865 Diff Case Assembly							