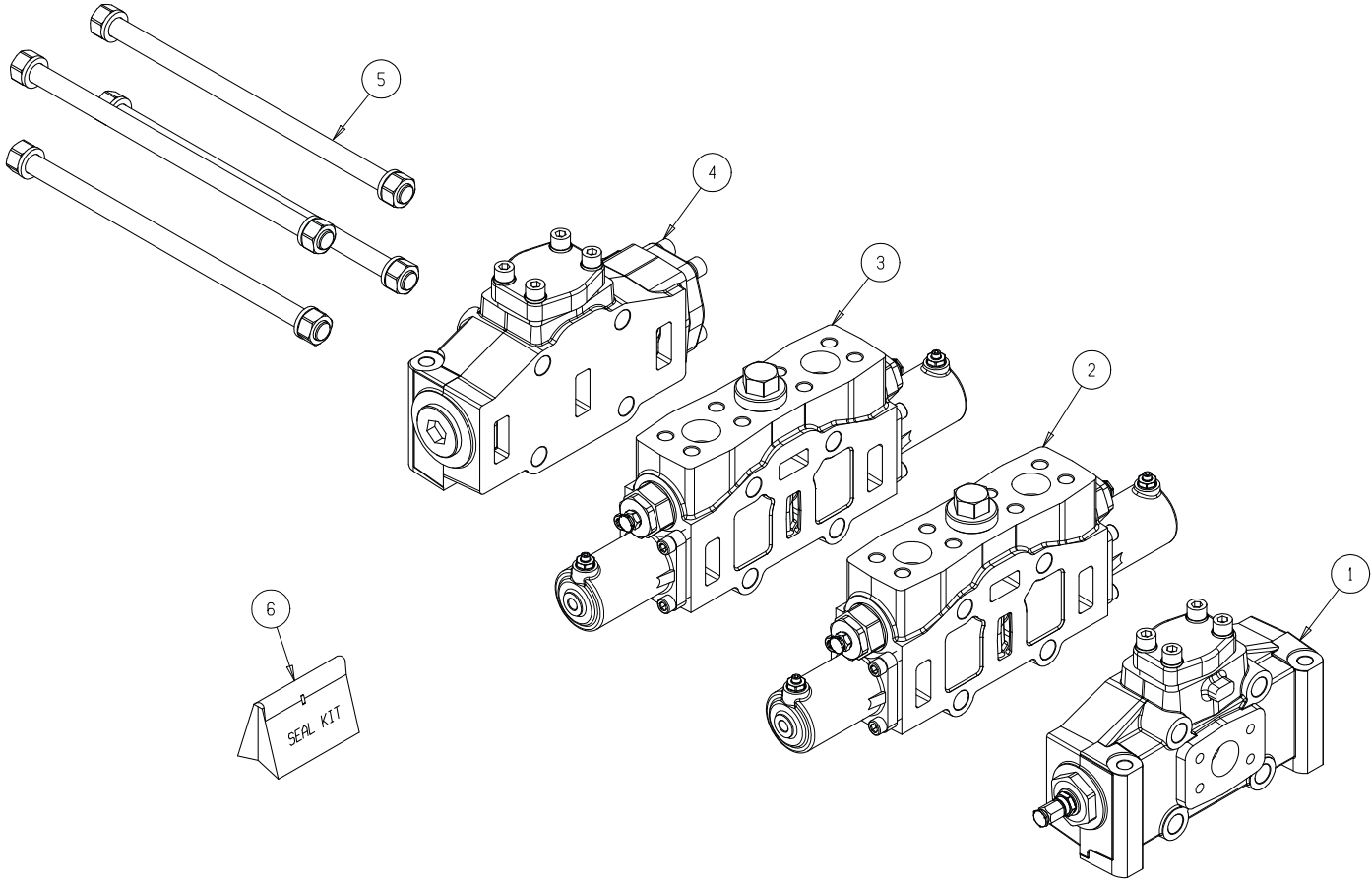


---

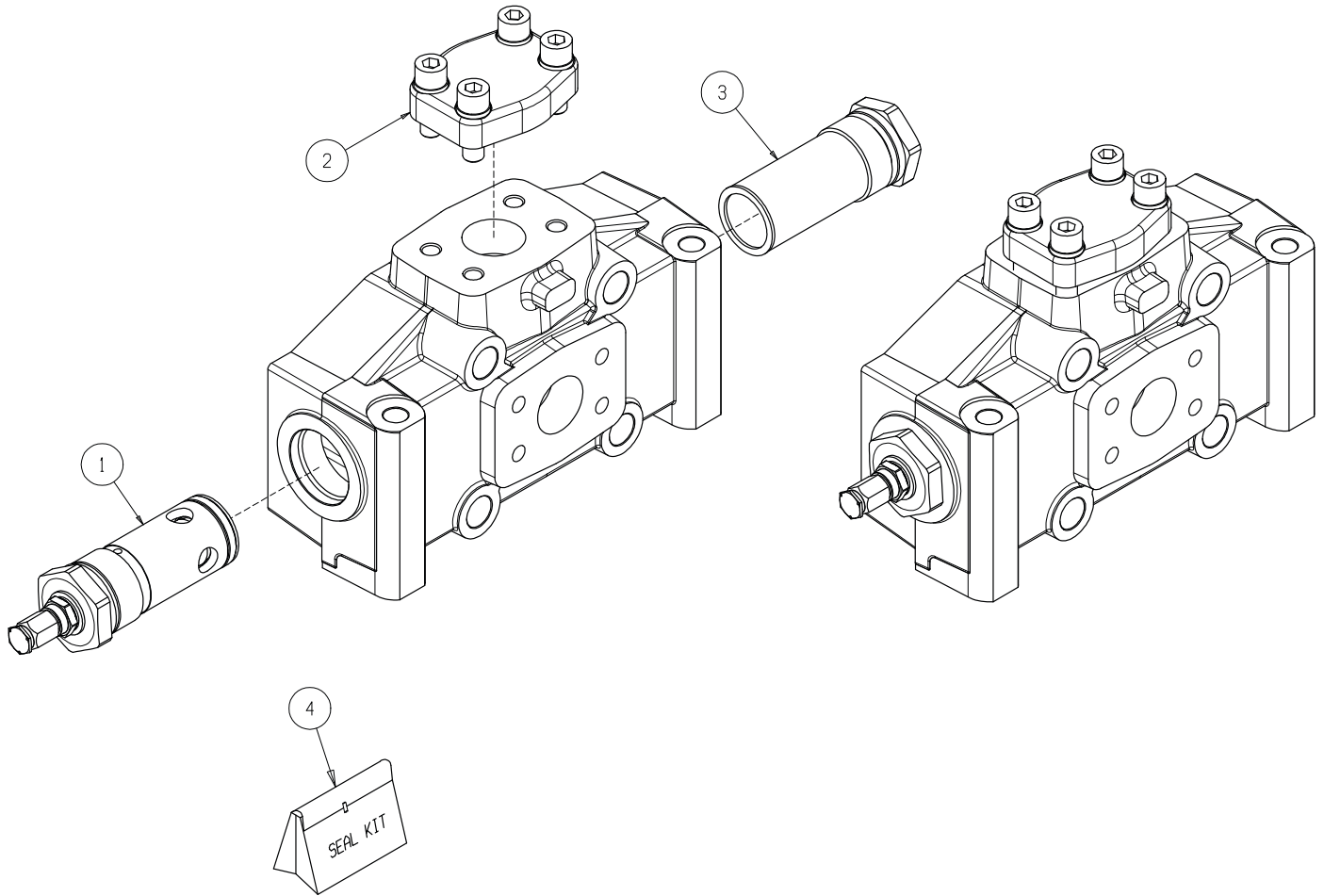
Hoist and Tilt Valve

# Hoist and Tilt Valve



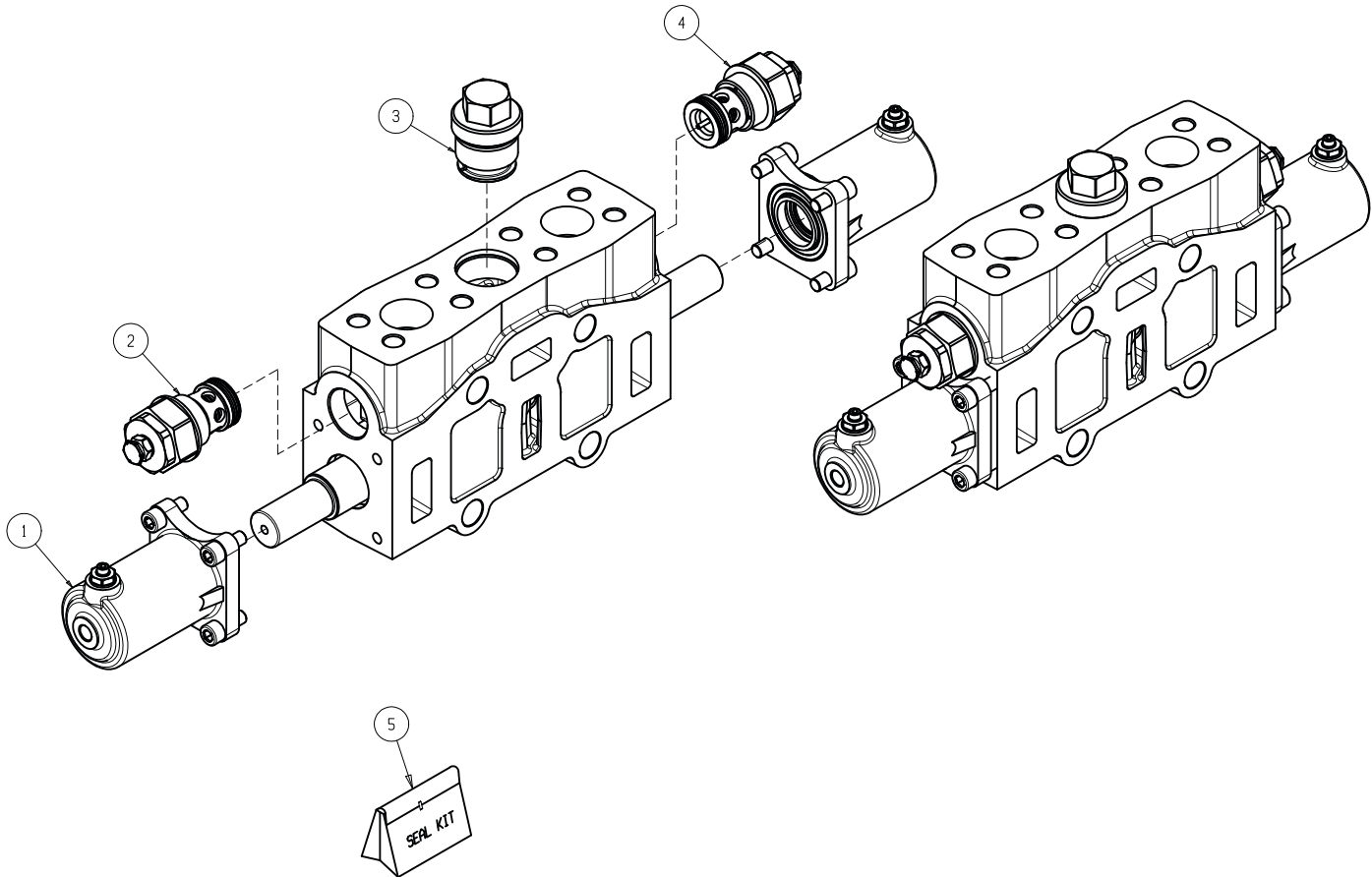
Item	Part No.	Qty	Description	Item	Part No.	Qty	Description
	<b>250637</b>		<b>Hoist &amp; Tilt Valve</b>				
1	599378	1	. Section, Inlet (See Page 3)	4	596315	1	. Section, Outlet (See Page 6)
2	599379	1	. Section, Work #1 (See Page 4)	5	593499	4	. Tie Rod; W/Nuts & Washers
3	599380	1	. Section, Work #2 (See Page 5)	6	596316	1	. Kit, Seal

# Inlet Section



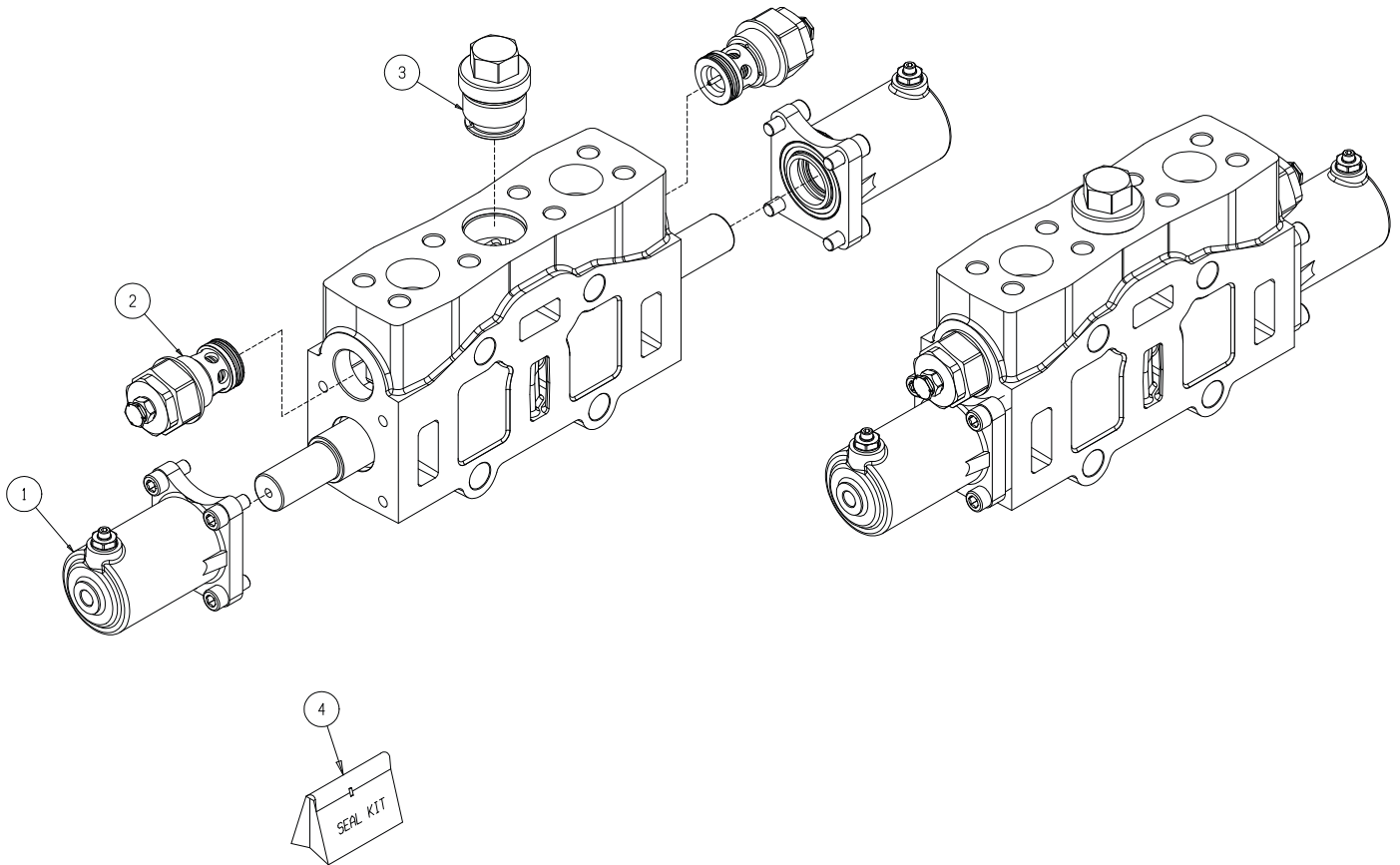
Item	Part No.	Qty	Description	Item	Part No.	Qty	Description
	<b>599378</b>		<b>Section, Inlet</b>				
1	599381	1	. Valve, Relief, 170 Bar	3	593507	1	. Valve, Relief; Plugged
2	599382	1	. Cap	4	593512	1	. Kit, Seal

## Work Section #1



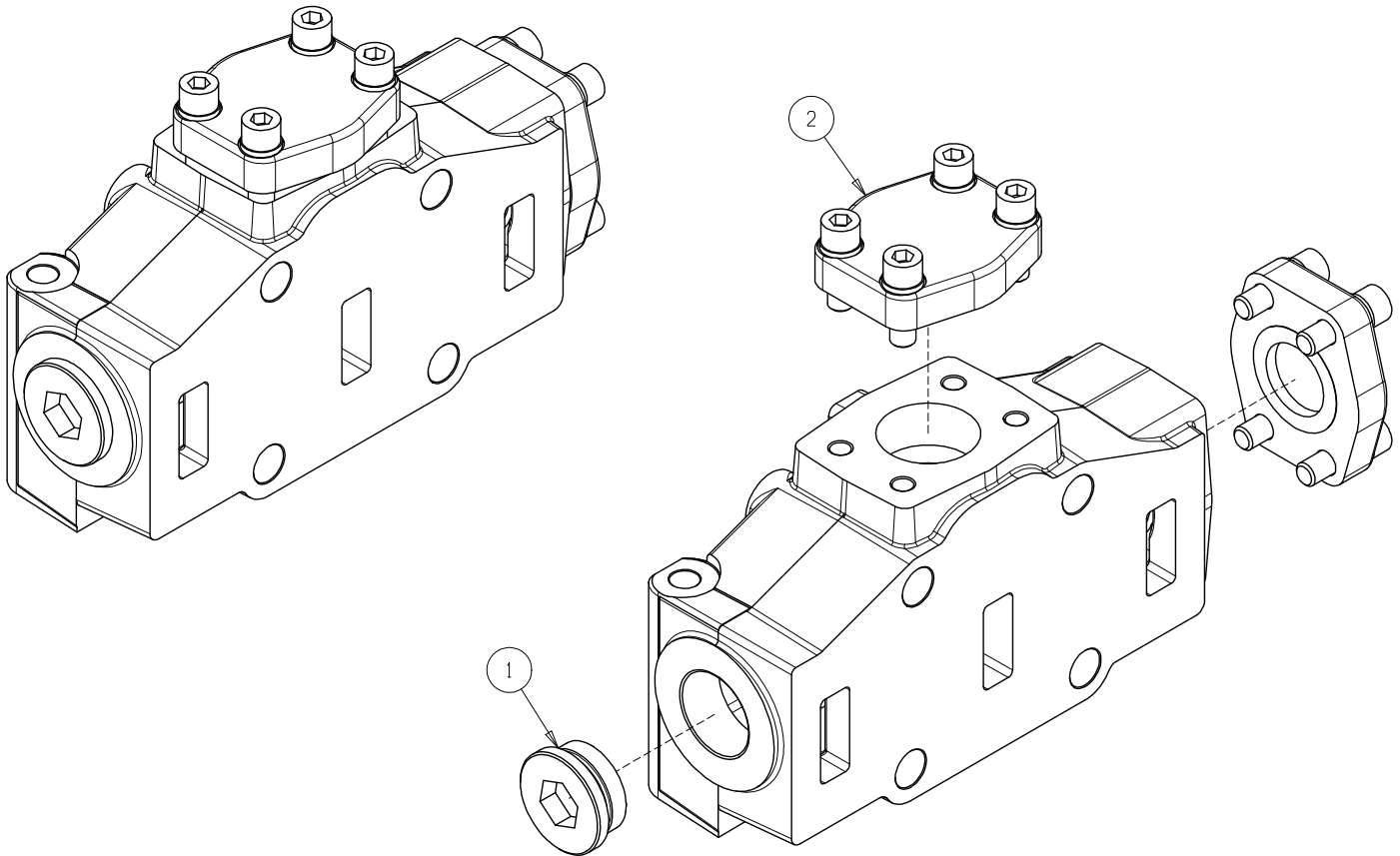
Item	Part No.	Qty	Description	Item	Part No.	Qty	Description
	<b>599379</b>		<b>Section, Work #1</b>				
1	251092	2	. End Cap Assy	4	593494	1	. Valve, Relief, 70 Bar
2	599383	1	. Valve, Relief, 190 Bar	5	596318	1	. Kit, Seal
3	593501	1	. Valve, Check				

## Work Section #2



Item	Part No.	Qty	Description	Item	Part No.	Qty	Description
	<b>599380</b>		<b>Section, Work #2</b>				
1	251092	2	. End Cap Assy	3	593501	1	. Valve, Check
2	599383	2	. Valve, Relief, 190 Bar	4	596318	1	. Kit, Seal

## Outlet Section



Item	Part No.	Qty	Description	Item	Part No.	Qty	Description
	<b>596315</b>		<b>Section, Outlet</b>				
1	593495	1	. Plug				
2	596317	2	. Cap				