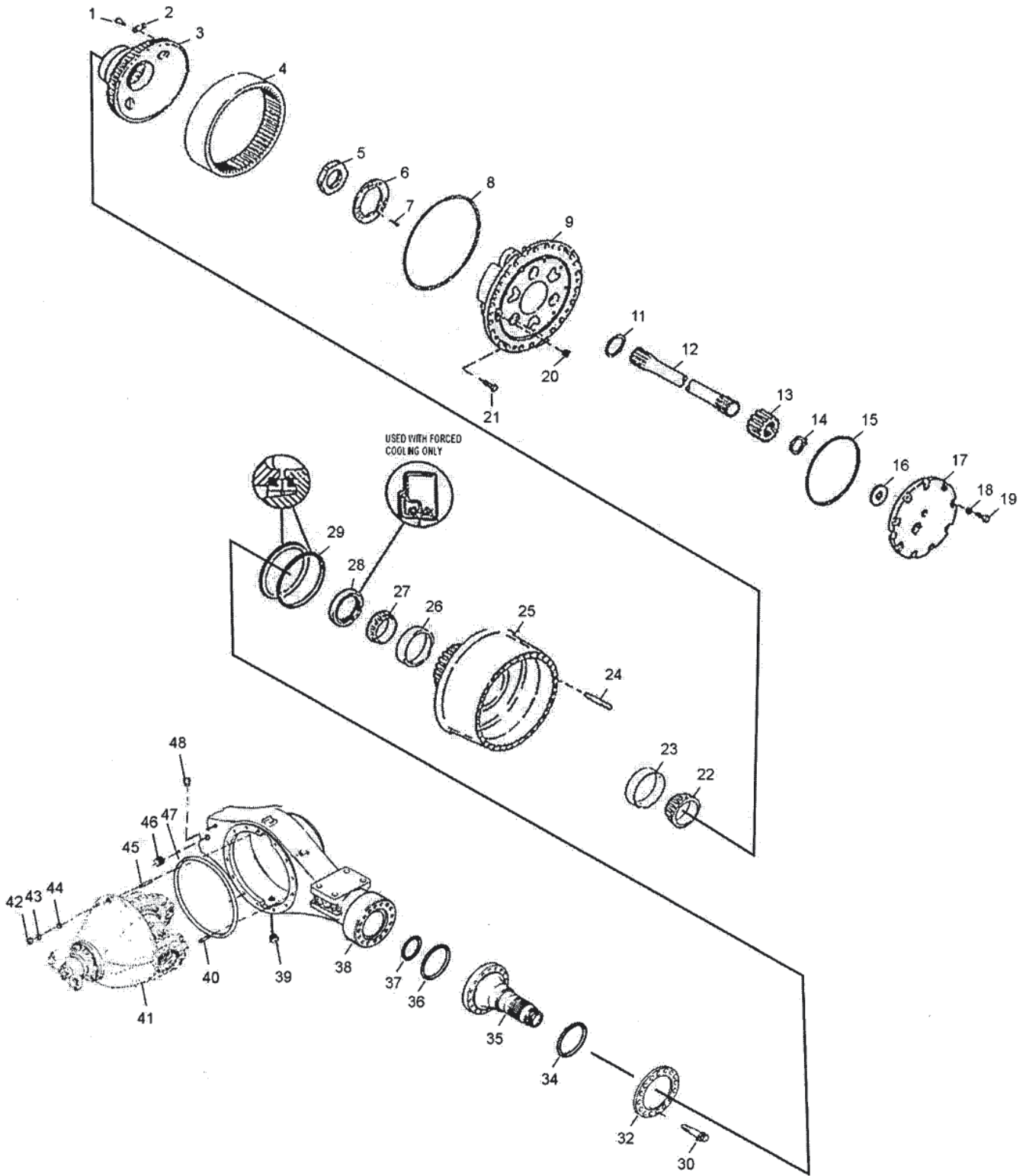

Axle, Rear Chassis



Axle, Rear Chassis

Item	Part No.	Qty	Description	Item	Part No.	Qty	Description
250234 Axle, Rear Chassis							
1	*d 251416	24	. Capscrew	28	240586	2	. Hub Seal, Inner
2	*d 223610	12	. Retaining Clip	29	241097	2	. Face Seal, Hub
3	*d 240578	2	. Hub, Internal Gear	30	240594	26	. Capscrew
4	*d 240579	2	. Internal Ring Gear	32	241096	2	. Retaining Ring
5	227233	2	. Nut, Bearing Adjusting	34	240596	2	. Sealing Ring
6	240580	2	. Locking Plate, Adjusting Nut	35	240595	2	. Spindle
7	R13806149	12	. Capscrew	36	240596	2	. Sealing Ring
8	201005	2	. O-Ring	37	240599	2	. Sealing Ring
9	*a 240602	2	. Planetary Assy	38	251148	1	. Axle Housing
11	230079	2	. Thrust Washer	39	R15278	1	. Drain Plug
12	240582	2	. Axle Shaft	40	218116	10	. Stud
13	240583	2	. Sun Gear	41	*a 251149	1	. Differential Assembly
14	217865	2	. Snap Ring	42	R13803604	22	. Nut
15	208956	2	. O-Ring	43	200762	22	. Washer
16	*b 201047	2	. Thrust Washer	44	213705	12	. Dowel
17	223622	2	. Planetary Cover Assy	45	218117	12	. Stud
18	211304	18	. Washer	46	215250	1	. Plug
19	R13811075	18	. Capscrew	46A	209207	1	. O-Ring
20	R565295	2	. Magnetic Plug	47	218126	1	. O-Ring
21	241124	8	. Capscrew	48	200751	1	. Vent Breather
22	240591	2	. Outer Bearing Cone				
23	*c 240590	2	. Outer Bearing Cup				
24	200971	52	. Wheel Stud				
25	251147	2	. Wheel Hub Assy				
26	*c 240589	2	. Inner Bearing Cup				
27	240587	2	. Inner Bearing Cone				

*a See Separate Coverage

*b Included in (Item 17) Planetary Cover Assembly

*c Included in (Item 25) Wheel Hub Assembly

*d Included in (240601) Internal Gear Assembly