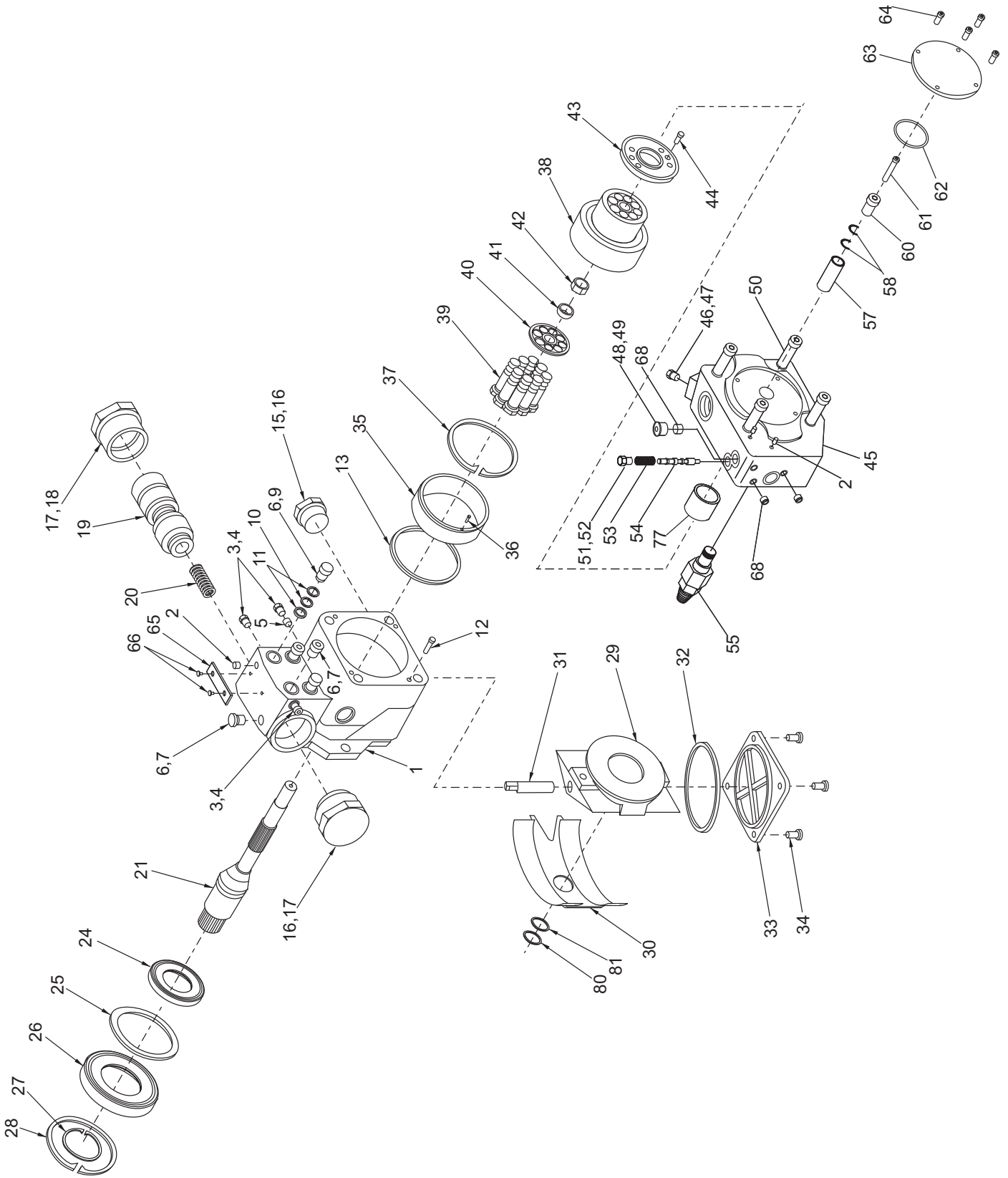

Hydraulic Pump



Hydraulic Pump

Item	Part No.	Qty	Description	Item	Part No.	Qty	Description
	249424		Hydraulic Pump				
1	-----	1	. Housing, Pump	35	-----	1	. Bearing, Cylinder
2	-----	2	. Plug	36	-----	1	. Pin, Roll
3	-----	3	. Plug	37	-----	1	. Ring, Cylinder Bearing
4	* 233221	1	. O-Ring	38	-----	1	. Barrel, Cylinder
5	-----	1	. Plug	39	-----	1	. Assembly, Piston & Shoe
6	-----	5	. Plug	40	-----	1	. Plate, Shoe Retainer
7	* 209743	3	. O-Ring	41	-----	1	. Ball, Fulcrum
8	-----	1	. Plug, Flow Reversing	42	-----	1	. Spring, Shoe Retainer Plate
9	* 209743	4	. O-Ring	43	-----	1	. Plate, Port
10	* R13805131	1	. O-Ring	44	-----	1	. Pin, Dowel
11	* 227856	2	. Back-Up Ring	45	-----	1	. Plate, Valve
12	-----	2	. Pin, Roll	46	-----	2	. Plug
13	* 203533	1	. O-Ring	47	* 233221	1	. O-Ring
14	* R13803492	1	. O-Ring	48	-----	1	. Plug
15	* 209744	1	. Plug	49	* 209743	1	. O-Ring
16	-----	2	. O-Ring	50	-----	4	. Screw
17	-----	2	. Plug, Control End	51	-----	1	. Plug, Sequence Valve Spool
18	* 209660	1	. O-Ring	52	* 209743	1	. O-Ring
19	-----	1	. Piston, Control	53	-----	1	. Spring, Control Valve
20	-----	1	. Spring, Control Piston	54	-----	1	. Spool, Control Valve
21	-----	1	. Driveshaft	55	-----	1	. Relief Valve
24	-----	1	. Seal, Driveshaft	57	*a	1	. Coupling, Thru Shaft
25	-----	1	. Retainer, Seal	58	*a	1	. Ring, Retainer
26	-----	1	. Bearing, Front Driveshaft	60	-----	1	. Spacer
27	-----	1	. Ring, Shaft Retainer	61	-----	1	. Screw
28	-----	1	. Ring, Bearing Retainer	62	-----	1	. O-Ring
29	-----	1	. Swashblock	63	-----	1	. Cover
30	-----	1	. Bearing, Saddle	64	-----	1	. Capscrew
31	-----	1	. Pin, Control	65	-----	1	. Name Plate
32	* 20550	1	. O-Ring	66	-----	1	. Screw, Drive
33	-----	1	. Cover, Housing	68	-----	1	. Plug, Orifice
34	-----	4	. Screw				

* Included in Seal Kit P/N 580382

*a Included in Adapter Kit P/N 588315