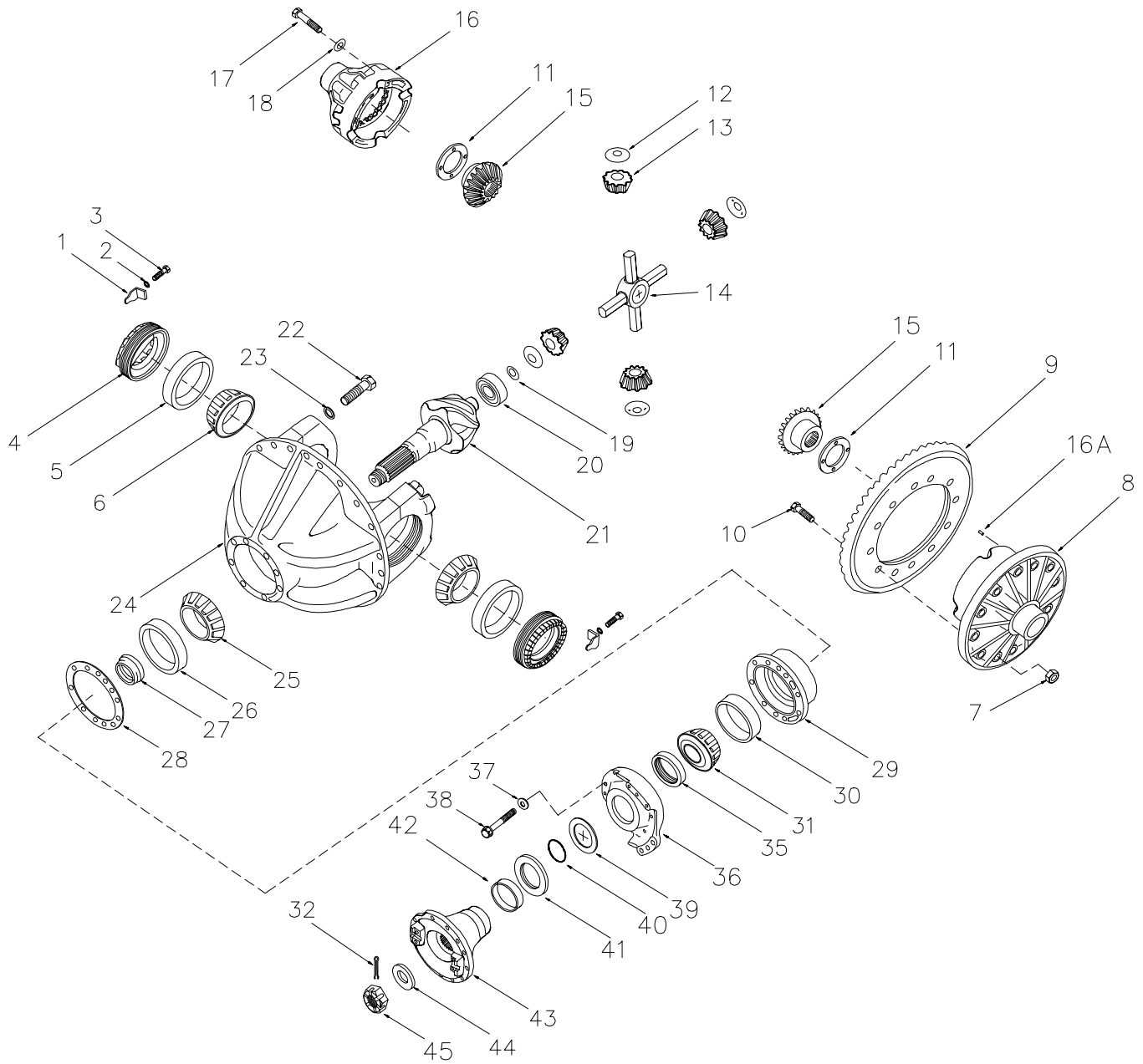

Differential & Carrier

Differential & Carrier



Item	Part No.	Qty	Description	Item	Part No.	Qty	Description
	243482		Differential & Carrier Assembly				
1	R126468	2	. Lock	25	201133	1	. Bearing Cone
2	R13800829	2	. Lock Washer	26	201132	1	. Bearing Cap
3	R13811054	2	. Capscrew	27	203240	1	. Kit, Spacer
4	217785	2	. Adjusting Nut	28	218062	A/R	. Shim
5	R672004	2	. Bearing Cup	28A	218063	A/R	. Shim
6	201137	2	. Bearing Cone	29	208958	1	. Cage Assembly-Inc. Items 26 & 30
7	R13804178	12	. Nut	30	201130	1	. Bearing Cup
8	*b,*c NSS	1	. Case Half	31	201129	1	. Bearing Cone
8A	*b,*c 214148	2	. Dowel	32	R13804465	1	. Pin
9	*a NSS	1	. Ring Gear	35	205724	1	. Oil Seal
10	214149	12	. Capscrew	36	240627	1	. Retainer
11	*b,*c 208831	2	. Thrust Washer	37	200607	8	. Lockwasher
12	*b,*c 208834	4	. Thrust Washer	38	217571	8	. Capscrew
13	*c 217570	1	. Pinion Gear	39	238462	1	. Thrust Washer
14	*c 208272	1	. Spider	40	240629	1	. V-Ring Seal
15	*c 217784	2	. Side Gear	41	240630	1	. Dust Shield
16	*b,*c NSS	1	. Case Half	42	218918	1	. Wear Sleeve
16A	*b,*c 214148	2	. Dowel	43	240628	1	. Flange-Inc. Items 40, 41 & 42
17	*b,*c 200936	8	. Capscrew	44	200988	1	. Washer
18	*b,*c 221707	8	. Washer	45	R12974639	1	. Nut
19	200380	1	. Retaining Ring				
20	201144	1	. Bearing				
21	*a NSS	1	. Pinion Gear				
22	217782	4	. Capscrew				
23	208830	4	. Lockwasher				
24	237735	1	. Carrier & Cap-Inc. Items 22 & 23				

* See Separate Coverage

*a Included in 227240 Ring & Pinion Assembly

*b Included in 219340 Case Kit

*c Included in 222994 Differential Sub-Assembly