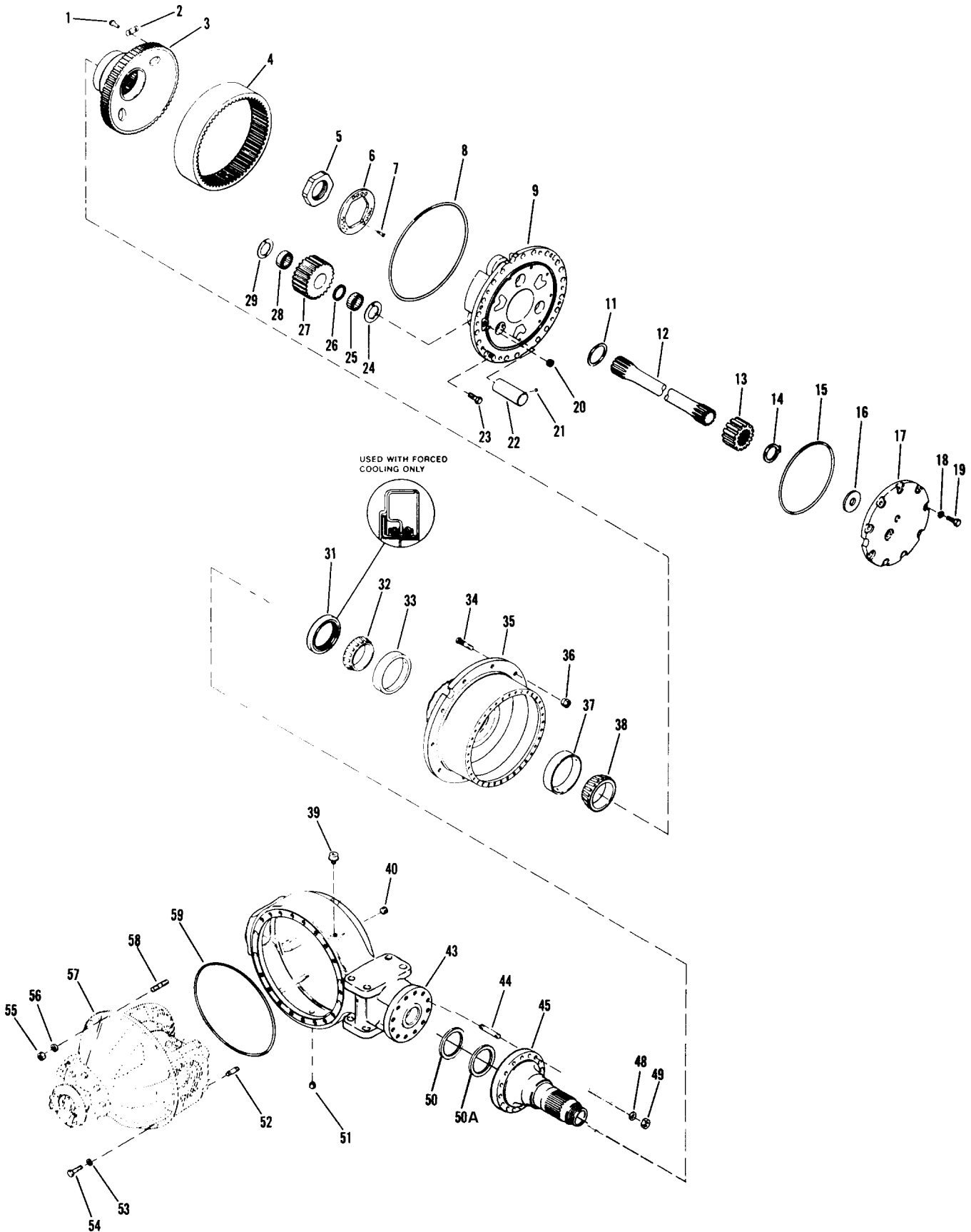

Axle Assembly



Axle Assembly

Item	Part No.	Qty	Description	Item	Part No.	Qty	Description
242417 Axle Assembly							
1	*a 226279	24	. Internal Gear Bolt	33	*c 240589	2	. Inner Hub Bearing Cup
2	*a 223610	12	. Retaining Plate	34	200971	52	. Wheel Attaching Stud
3	*a 240578	2	. Internal Gear Hub	35	240631	2	. Hub & Cup Assembly
4	*a 240579	2	. Ring Gear	37	*c 240590	2	. Outer Hub Bearing Cup
5	227233	2	. Adjusting Nut	38	240591	2	. Outer Hub Bearing Cone
6	240580	2	. Adjusting Lock	39	200751	1	. Breather
7	233582	12	. Capscrew	40	215250	1	. Housing Filler Hole Plug
8	201005	2	. Sealing Ring	43	-----	1	. Axle Housing
9	*b 240581	2	. Planet Carrier	44	240594	26	. Capscrew
11	230079	2	. Thrust Washer	45	240595	2	. Spindle
12	240582	2	. Axle Shaft	47A	240598	2	. Spindle Ring (Not Illustrated)
13	240583	2	. Sun Gear	48	217419	26	. Washer
14	217865	2	. Snap Ring	50	240599	2	. Ring Seal
15	208956	2	. Sealing Ring	50A	240596	2	. Ring Seal
16	201047	2	. Thrust Washer	51	R15278	1	. Housing Drain Hole Plug
17	223622	2	. Planet Cover Assy. (Includes item 16)	52	218116	10	. Stud
18	202823	18	. Attaching Washer	52A	213705	12	. Dowel
19	217762	18	. Attaching Screw	53	200607	4	. Lockwasher
20	*b 201131	2	. Plug	54	217763	4	. Screw
21	*b 204888	6	. Lock Ball	55	217779	22	. Nut
22	*b 200992	6	. Planet Shaft	56	200762	22	. Washer
23	*b 227606	8	. Capscrew	57	* 243482	1	. Differential & Carrier Assembly
24	*b 200994	6	. Thrust Washer	58	218117	12	. Stud
25	*b 200995	186	. Needle Roller	59	218126	1	. Sealing Ring
26	*b 200996	6	. Spacer				
27	*b 240584	6	. Planet Gear	*a included in 240601 Internal Gear & Hub Assembly			
28	*b 200995	186	. Needle Roller	*b included in 240602 Planet Carrier Assembly.			
29	200994	6	. Thrust Washer	*c included in 240631 Hub & Cup Assembly			
31	240586	2	. Hub Seal	* See Separate Coverage			
32	240587	2	. Inner Hub Bearing Cone				