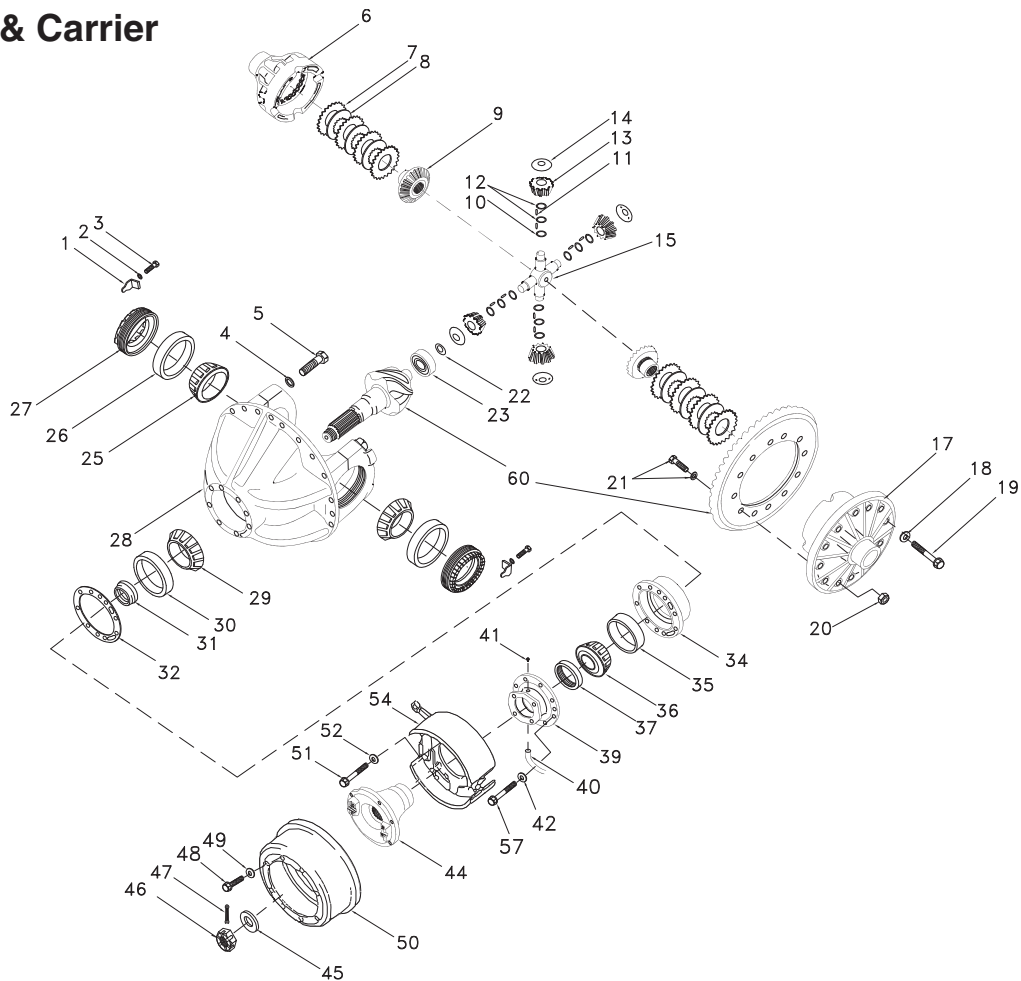


Differential & Carrier



Item	Part No.	Qty	Description	Item	Part No.	Qty	Description
<b>240438 Differential &amp; Carrier</b>							
1	219339	2	. Lock	32	*f 218051	A/R	. Shim
2	R13800829	2	. Lockwasher	34	217697	1	. Cage & Cup (Inc. items 30 & 35)
3	201613	2	. Capscrew	35	*f 201141	1	. Bearing Cup
4	232349	4	. Lockwasher	36	*f 213645	1	. Bearing Cone
5	224282	4	. Bolt	37	*f 205724	1	. Oil Seal
6	*c*d NSS	1	. Case, Plain Half	39	218048	1	. Retainer
7	*d 240439	6	. Outer Disc, Clutch	40	200952	1	. Drain Tube
8	*d 240440	4	. Inner Disc, Inner	41	200628	1	. Pipe Plug
9	*b*d 242482	2	. Side Gear	42	200608	8	. Lockwasher
10	*d*f 240441	4	. Inner Spacer	44	200949	1	. Flange
11	*d*f 240442	192	. Needle Roller	45	200951	1	. Washer
12	*d*f 240443	8	. Outer Spacer	46	200950	1	. Nut
13	*b*d NSS	1	. Pinion Gear Kit	47	212141	1	. Cotter Pin
14	*d*f 211967	4	. Thrust Washer	48	*g 219646	8	. Bolt
15	*d 240445	1	. Spider	49	*g 200603	8	. Lockwasher
17	*c*d NSS	1	. Case, Flange Half	50	*g 200953	1	. Brake Drum
18	*c*d 207488	12	. Washer	51	*g Y17C-1024	4	. Bolt
19	*c*d 240446	12	. Bolt	52	*g 00103325	4	. Lockwasher
20	*f R13804178	12	. Nut	54	*a*g 201087	1	. Brake
20	*f R4094988	12	. Washer	57	221659W	8	. Bolt
21	*f 240447	12	. Bolt	60	217706	1	. Ring & Pinion Set
22	*f 201095	1	. Snap Ring				
23	*f 201145	1	. Bearing				
25	*f 201139	2	. Bearing Cone				
26	*f 201138	2	. Bearing Cup				
27	219345	2	. Adjusting Nut				
28	*e 240449	1	. Carrier Assy (Inc. items 4 & 5)				
29	*f 217703	1	. Bearing Cone				
30	*f 217702	1	. Bearing Cup				
31	*f 218182	1	. Shim Kit				
32	*f 218050	A/R	. Shim				

NSS Not Sold Separately

A/R As Required

\*a See Separate Coverage

\*b Included in 240444 Pinion & Side Gear Kit

\*c Included in 240454 Case Kit

\*d Included in 234545 Differential Sub-Assembly

\*e Includes twelve (12) 217874 Dowels - not illustrated

\*f Included in 584264 Service Kit

\*g Not Used on Units with Caliper Parking Brake