

DATE: April 16, 2003

BULLETIN NO. _____ PMB0301

PAGE: 1 of 1

MODEL(S): _____ All R16271 Users

ATTENTION: PARTS AND SERVICE MANAGERS

SUBJECT: ACCUMULATOR R16271 PRESSURE LEVEL

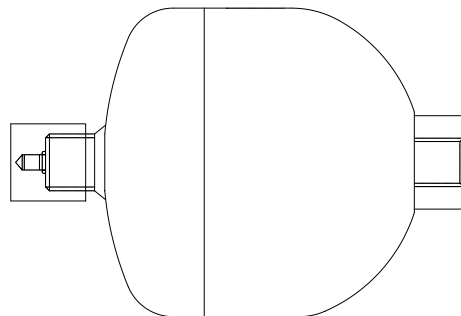
IMPORTANT INFORMATION

The R16271 accumulator is widely used in various applications by Allied Systems Company. The accumulator needs to be pre-charged to the proper pressure with nitrogen prior to installation. See the pressure chart below for correct pre-charge pressure levels.

Ranger Applications:	1000 psi +/- 5 psi
Winch Applications:	115 psi +/- 5 psi
Wagner (Heavy Lift Transporter Applications): 578328 - Hydraulic System- Hoist	1500 psi +/- 25 psi

It is recommended that the accumulator pre-charge pressure is checked every 90 days and recharged as required to assure proper operation.*

If recharge is required, the proper charge valve P/N 243274 is available for purchase through Allied Systems Company Parts Department.



***Note: If any structural damage is noted at inspection of the accumulator shell, it should be replaced as a safety precaution.**